



SunLong Biotech Co.,LTD  
Tel: 0086-571- 56623320 Fax:0086-571- 56623318  
E-mail:sales@sunlongbiotech.com  
www.sunlongbiotech.com

## **[KD-Validated] Anti-SMAD Family Member 1 Rabbit Monoclonal Antibody**

Cat No.: KD-10811

### **Aliases:**

SMAD1; SMAD Family Member 1; MADR1; JV4-1; MADH1; Mothers Against Decapentaplegic Homolog 1; Mothers Against DPP Homolog 1; Mad-Related Protein 1; BSP-1; BSP1; MAD, Mothers Against Decapentaplegic Homolog 1 (Drosophila); Transforming Growth Factor-Beta Signaling Protein 1; Transforming Growth Factor-Beta-Signaling Protein 1; SMAD, Mothers Against DPP Homolog 1 (Drosophila); MAD, Mothers Against Decapentaplegic Homolog 1; SMAD, Mothers Against DPP Homolog 1; TGF-Beta Signaling Protein 1; MAD Homolog 1; SMAD 1; HSMAD1; Smad1; JV41

### **Background:**

UniProt Entry: [Q15797](#);NCBI Gene Entry: [4086](#)

### **Application Information**

Molecular Weight: Predicted, 52 kDa, observed, 58 kDa Clonality: Rabbit monoclonal antibody Clone ID: 24GB2100 Species Reactivity: Human Applications Used: Western Blotting (WB), Flow Cytometry (FCM)

### **Immunogen**

A synthesized peptide derived from human Smad1

### **Isotype**

Rabbit IgG

**Storage Buffer**

Supplied in PBS (pH 7.4) containing 50% glycerol, and 0.02% sodium azide.

**Storage**

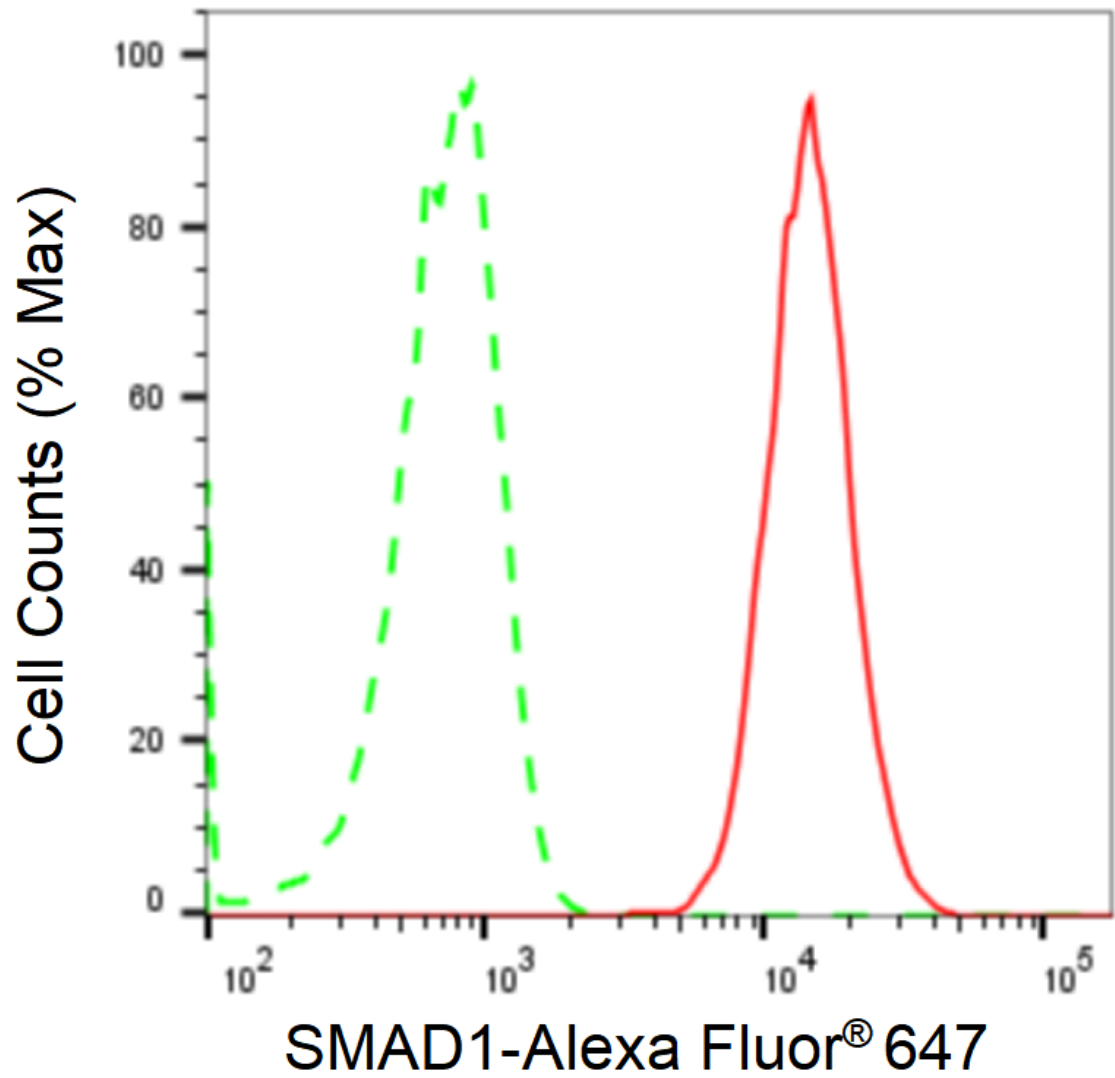
Store at -20 °C for one year.

**Recommended Dilutions**

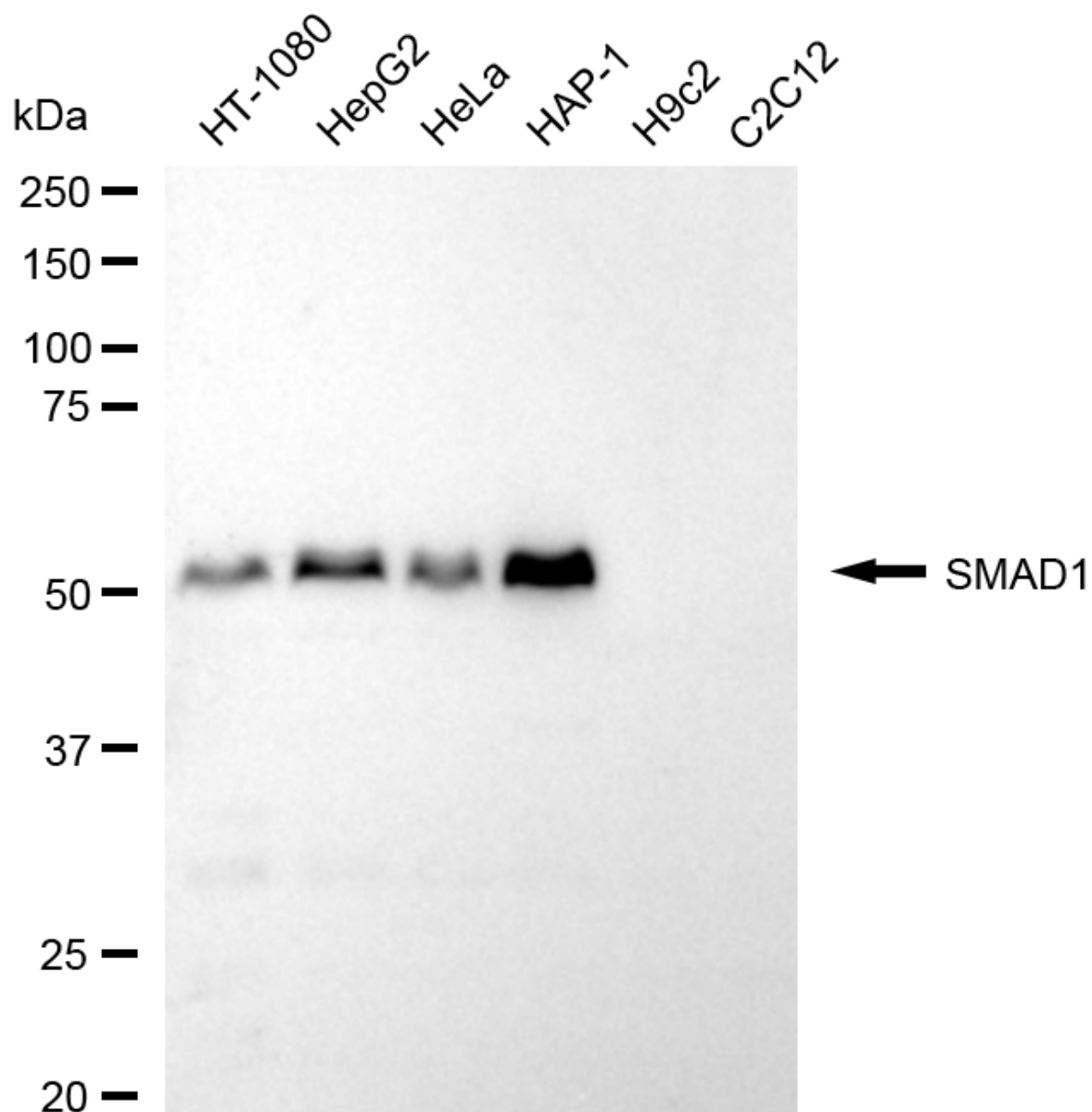
Western Blotting (WB): 1:1,000-1:5,000 Flow Cytometry (FCM): 1:2,000

**Protocols**

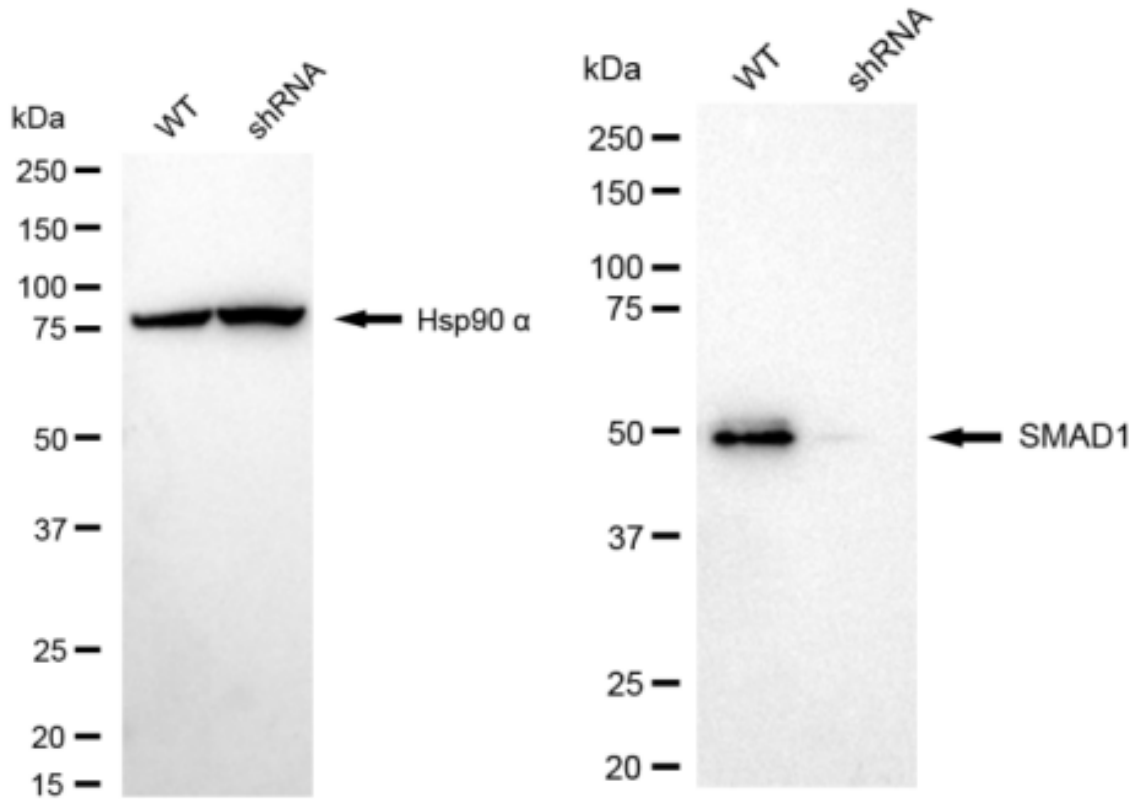
For general and specific antibody protocols please visit our website. Read all instructions before using this product.



Flow cytometric analysis of SMAD1 expression in HAP-1 cells using anti-SMAD1 antibody 1:2,000. Green, isotype control; red, SMAD1.



Western blotting analysis using anti-SMAD1 antibody 1:5,000 and HRP-conjugated goat anti-rabbit secondary antibody 1:20,000 respectively. Image was developed using FeQ™ ECL Substrate Kit .



Western blotting analysis using anti-SMAD1 antibody 1:5,000 and HRP-conjugated goat anti-rabbit secondary antibody 1:20,000 respectively. Image was developed using NaQ™ ECL Substrate Kit .