



SunLong Biotech Co.,LTD
Tel: 0086-571- 56623320 Fax:0086-571- 56623318
E-mail:sales@sunlongbiotech.com
www.sunlongbiotech.com

[KD-Validated] Anti-SLC25A12 Rabbit Monoclonal Antibody

Cat No.: KD-10810

Aliases:

SLC25A12; Solute Carrier Family 25 Member 12; Aralar; AGC1; Electrogenic Aspartate/Glutamate Antiporter SLC25A12, Mitochondrial; Aralar1; Solute Carrier Family 25 (Mitochondrial Carrier, Aralar), Member 12; Solute Carrier Family 25 (Aspartate/Glutamate Carrier), Member 12; Mitochondrial Aspartate Glutamate Carrier 1; Aspartate/Glutamate Carrier 1; Araceli Hiperlarga; Calcium Binding Mitochondrial Carrier Superfamily Member Aralar1; Calcium-Binding Mitochondrial Carrier Protein Aralar1; ARALAR1; EIEE39; DEE39

Background:

UniProt Entry: [O75746](#);NCBI Gene Entry: [8604](#)

Application Information

Molecular Weight: Predicted, 75 kDa, observed, 72 kDa Clonality: Rabbit monoclonal antibody Clone ID: 24GB2340 Species Reactivity: Human, Mouse, Rat Applications Tested: Western Blotting (WB), Flow Cytometry (FCM)

Immunogen

A synthesized peptide derived from human SLC25A12

Isotype

Rabbit IgG

Storage Buffer

Supplied in PBS (pH 7.4) containing 50% glycerol, and 0.02% sodium azide.

Storage

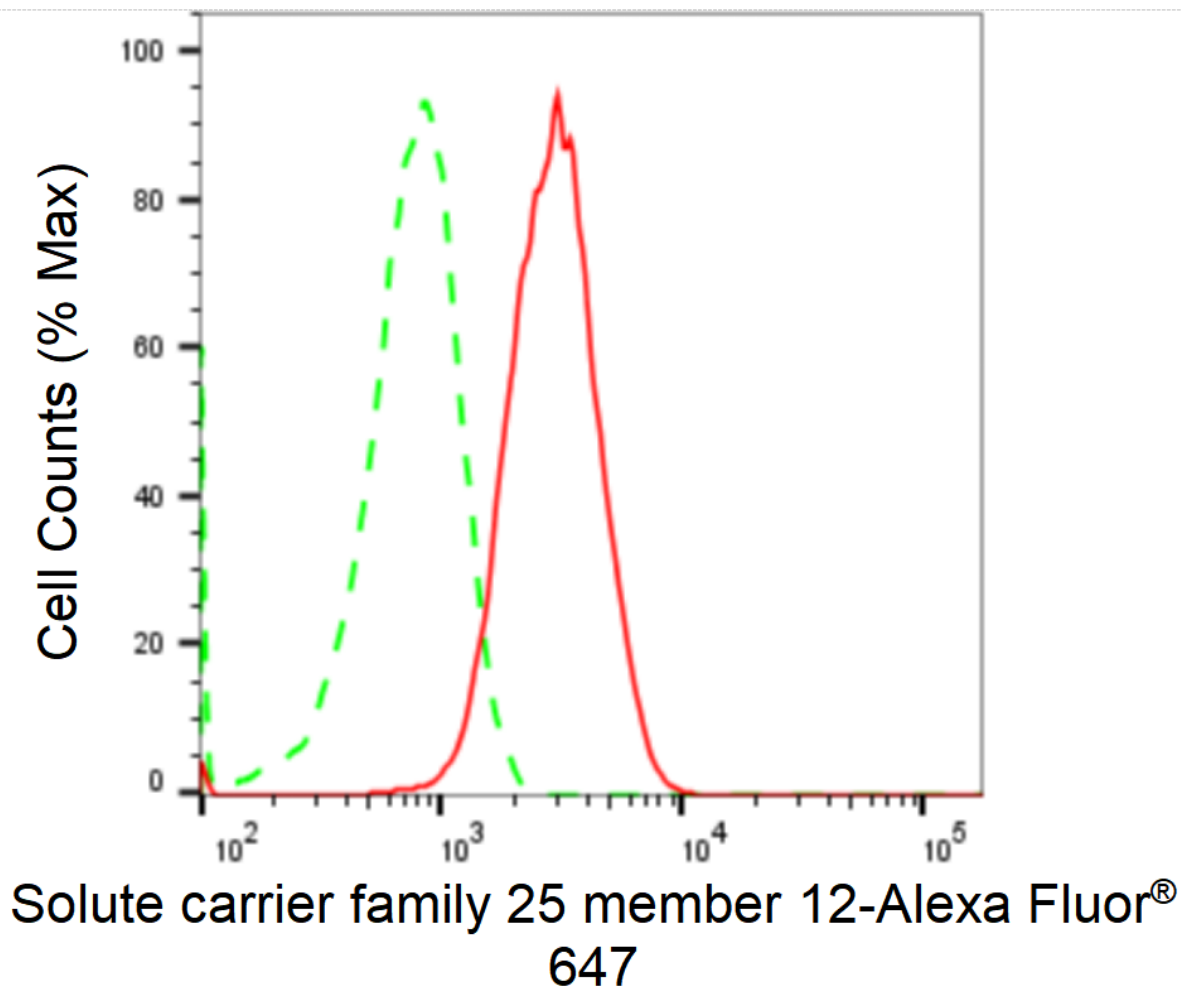
Store at -20 °C for one year.

Recommended Dilutions

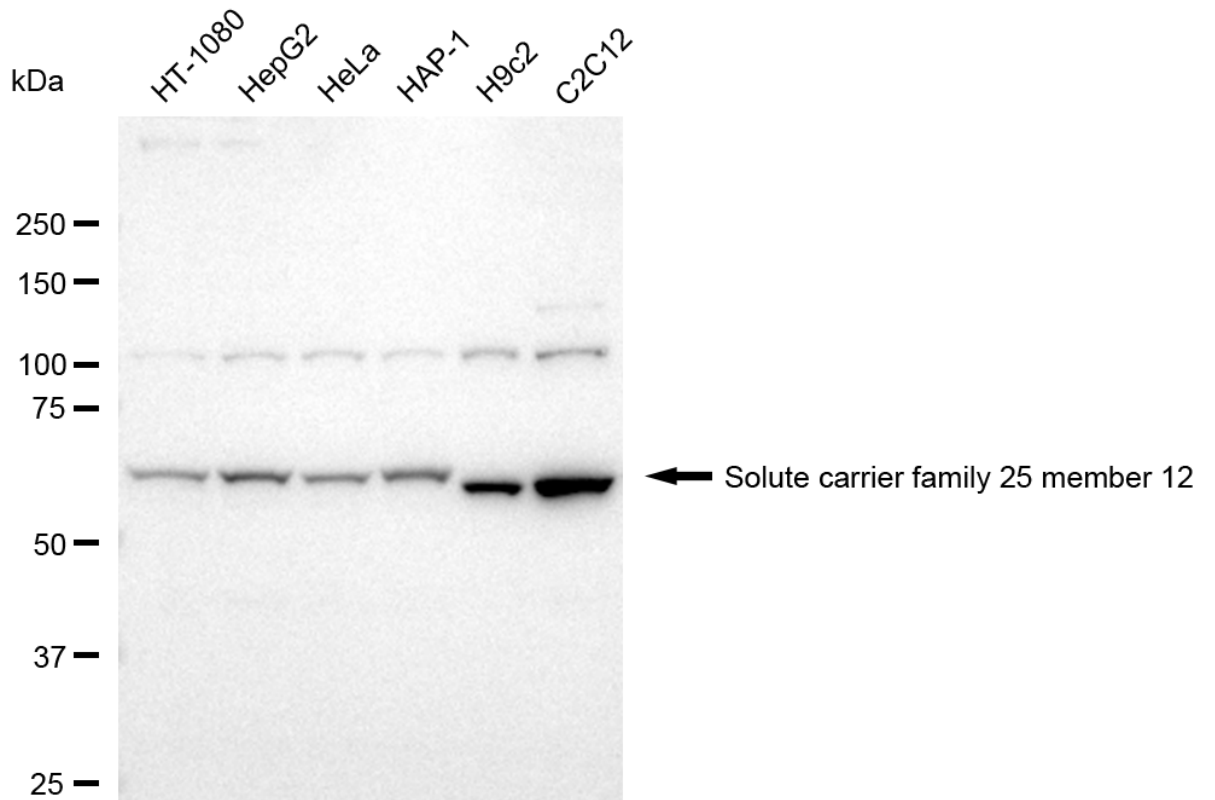
Western Blotting (WB): 1:1,000-1:5,000 Flow Cytometry (FCM): 1:2,000

Protocols

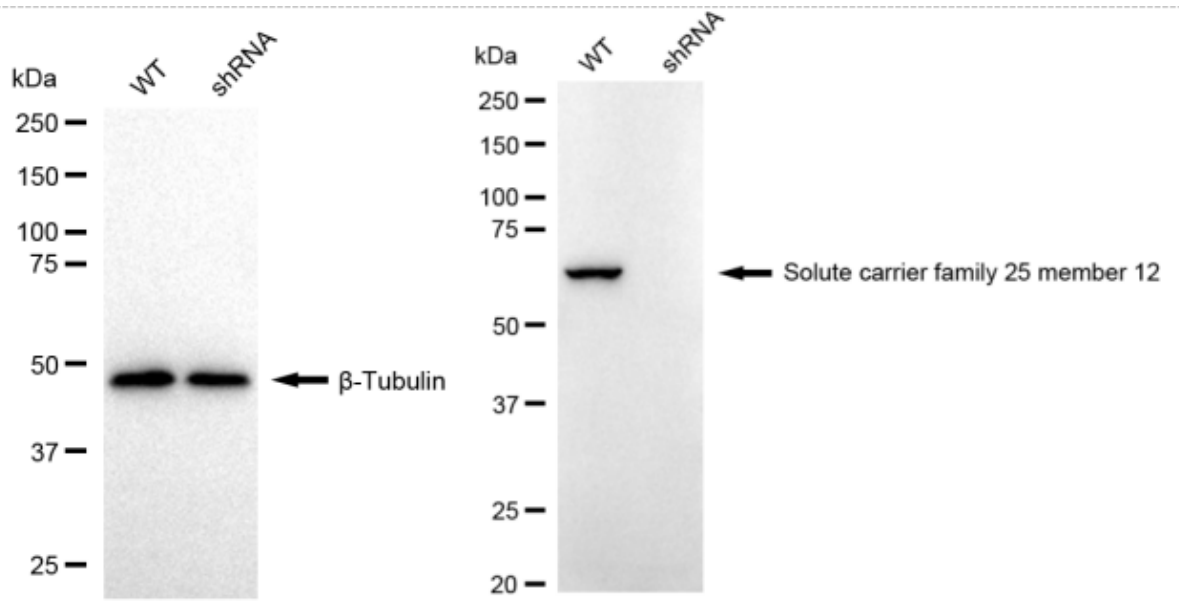
For general and specific antibody protocols please visit our website. Read all instructions before using this product.



Flow cytometric analysis of Solute carrier family 25 member 12 expression in C2C12 cells using anti-Solute carrier family 25 member 12 antibody 1:2,000. Green, isotype control; red, Solute carrier family 25 member 12.



Western blotting analysis using anti-solute carrier family 25 member 12 antibody 1:5,000 and HRP-conjugated goat anti-rabbit secondary antibody 1:20,000 respectively. Image was developed using FeQ™ ECL Substrate Kit .



Western blotting analysis using anti-Solute carrier family 25 member 12 antibody 1:5,000 and HRP-conjugated goat anti-rabbit secondary antibody 1:20,000 respectively. Image was developed using NaQ™ ECL Substrate Kit .