



SunLong Biotech Co.,LTD
Tel: 0086-571- 56623320 Fax:0086-571- 56623318
E-mail:sales@sunlongbiotech.com
www.sunlongbiotech.com

[KD-Validated] Anti-Sonic Hedgehog Signaling Molecule Rabbit Monoclonal Antibody

Cat No.: KD-10809

Aliases:

SHH; Sonic Hedgehog Signaling Molecule; MCOPCB5; SMMCI; TPTPS; HHG1; TPT; Shh Unprocessed N-Terminal Signaling And C-Terminal Autoprocessing Domains; Sonic Hedgehog Protein; ShhNC; HLP3; HPE3; Sonic Hedgehog (Drosophila) Homolog; Sonic Hedgehog Homolog; EC 3.1.-.-; HHG-1

Background:

UniProt Entry: [Q15465](#);NCBI Gene Entry: [6469](#)

Application Information

Molecular Weight: Predicted, 50 kDa, observed, 51 kDa Clonality: Rabbit monoclonal antibody Clone ID: 24GB1925 Species Reactivity: Human, Mouse, Rat Applications Tested: Western Blotting (WB), Flow Cytometry (FCM), Immunocytochemistry (IC)

Immunogen

A synthesized peptide derived from human Sonic Hedgehog

Isotype

Rabbit IgG

Storage Buffer

Supplied in PBS (pH 7.4) containing 50% glycerol, and 0.02% sodium azide.

Storage

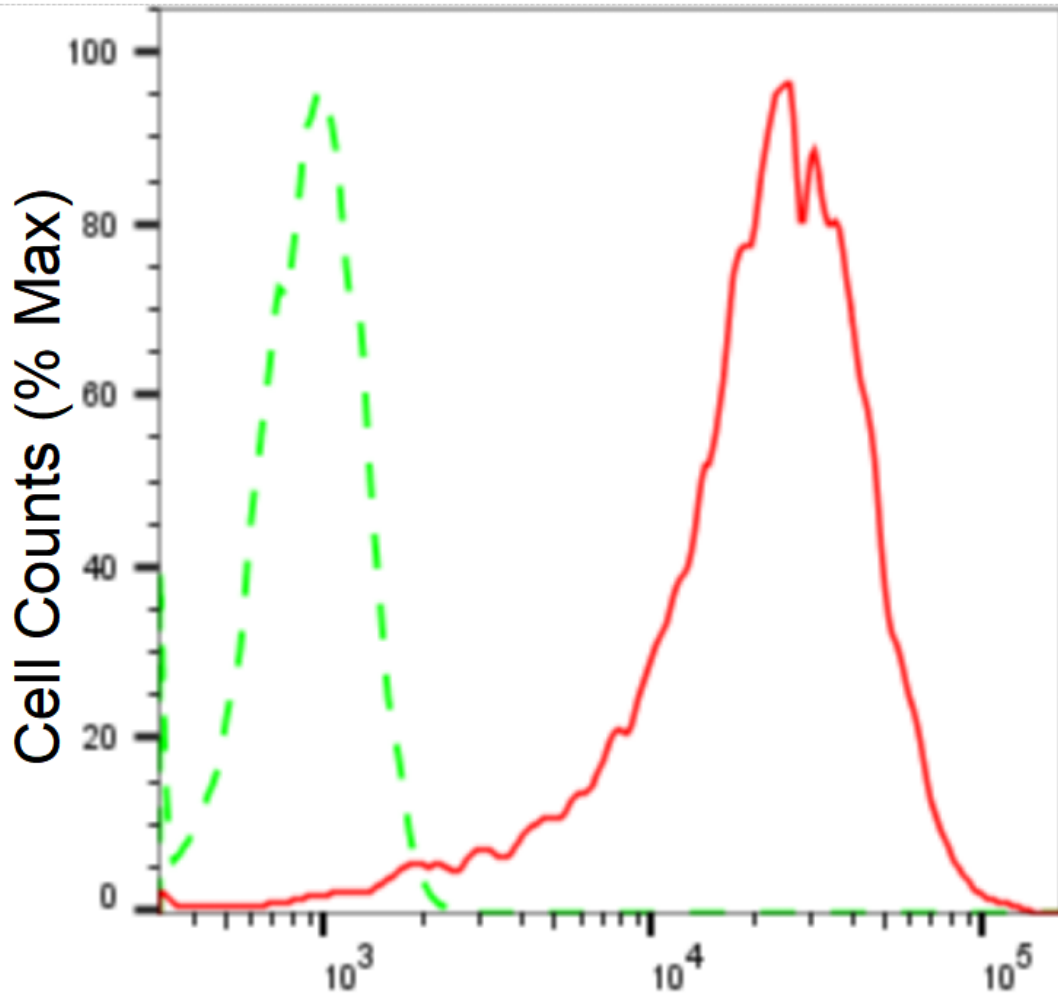
Store at -20 °C for one year.

Recommended Dilutions

Western Blotting (WB): 1:1,000-1:5,000 Flow Cytometry (FCM): 1:2,000
Immunocytochemistry (IC): 1:1,000

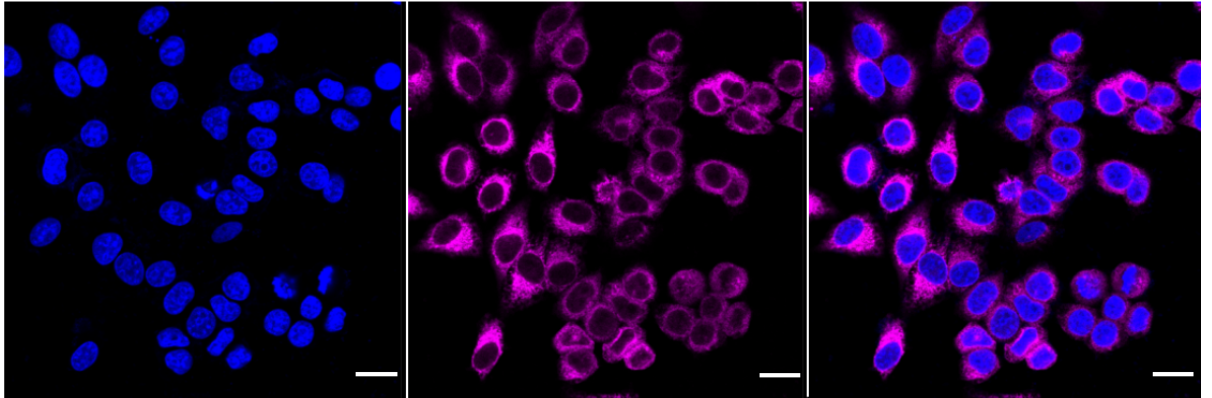
Protocols

For general and specific antibody protocols please visit our website. Read all instructions before using this product.

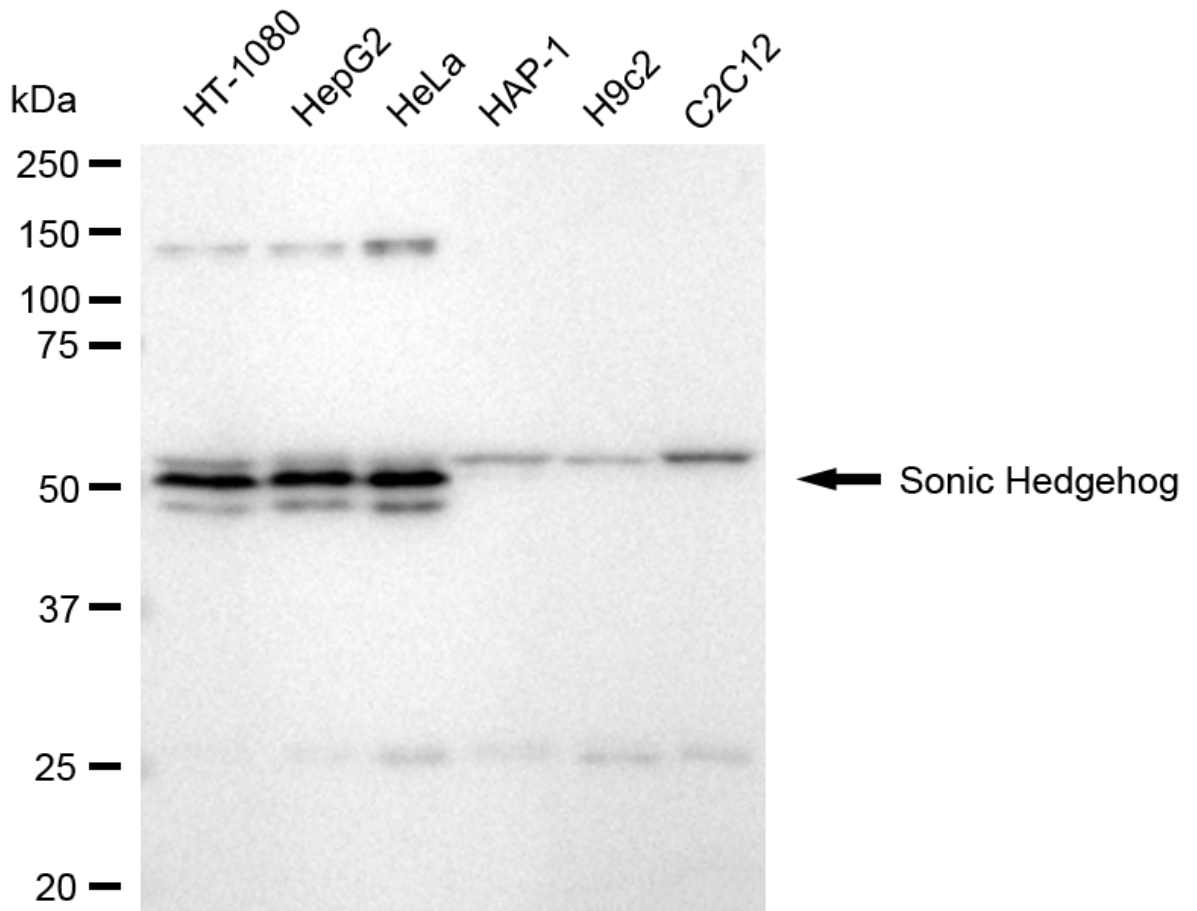


Sonic Hedgehog-Alexa Fluor[®] 647

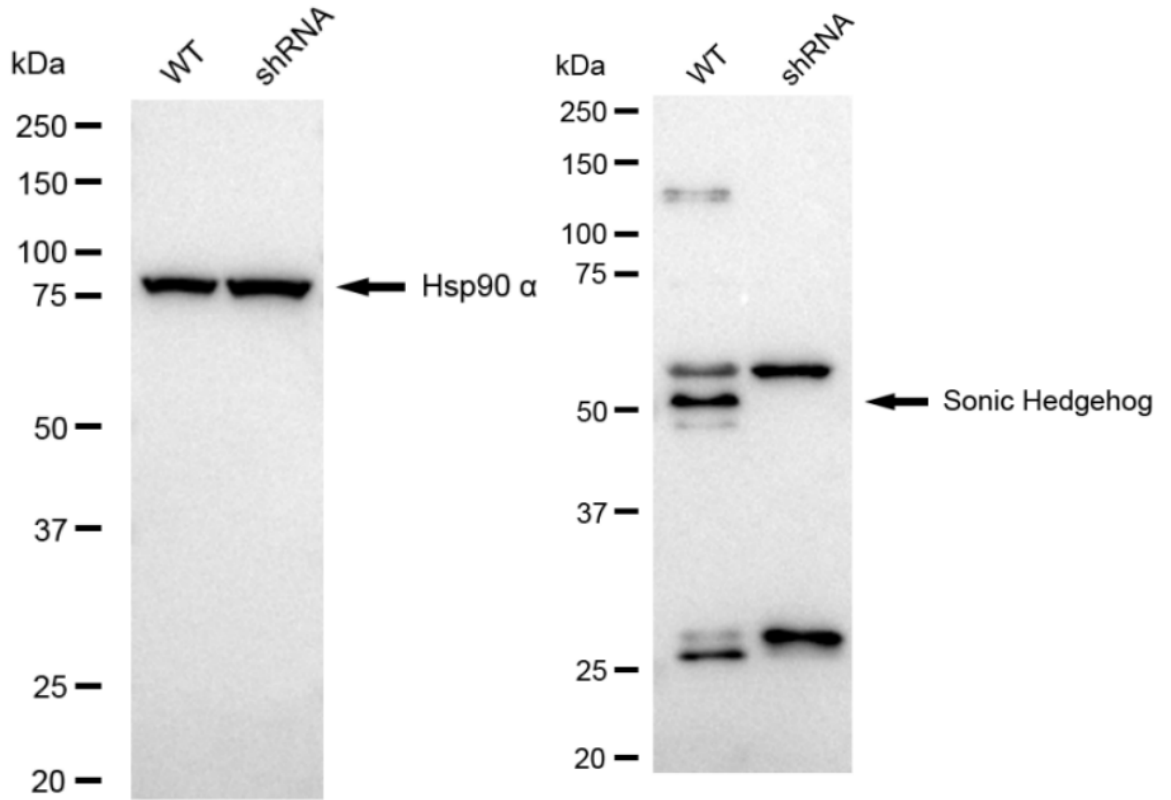
Flow cytometric analysis of Sonic Hedgehog expression in HepG2 cells using anti-Sonic Hedgehog antibody 1:2,000. Green, isotype control; red, Sonic Hedgehog.



Immunocytochemical staining of HepG2 cells with anti-Sonic Hedgehog antibody 1:1,000. Nuclei were stained blue with DAPI; Sonic Hedgehog was stained magenta with Alexa Fluor® 647. Images were taken using Leica stellaris 5. Protein abundance based on laser Intensity and smart gain: High. Scale bar: 20 μ m.



Western blotting analysis using anti-sonic hedgehog antibody 1:5,000 and HRP-conjugated goat anti-rabbit secondary antibody 1:20,000 respectively. Image was developed using FeQ™ ECL Substrate Kit .



Western blotting analysis using anti-sonic hedgehog antibody 1:5,000 and HRP-conjugated goat anti-rabbit secondary antibody 1:20,000 respectively. Image was developed using NaQ™ ECL Substrate Kit . SHH, sonic hedgehog signaling molecule.