



SunLong Biotech Co.,LTD
Tel: 0086-571- 56623320 Fax:0086-571- 56623318
E-mail:sales@sunlongbiotech.com
www.sunlongbiotech.com

[KD-Validated] Anti-SFPQ Rabbit Monoclonal Antibody

Cat No.: KD-10808

Aliases:

Splicing Factor Proline And Glutamine Rich; PSF; PPP1R140; Polypyrimidine Tract Binding Protein Associated; Protein Phosphatase 1, Regulatory Subunit 140; DNA-Binding P52/P100 Complex, 100 KDa Subunit; Splicing Factor, Proline- And Glutamine-Rich; Splicing Factor Proline/Glutamine-Rich; 100 KDa DNA-Pairing Protein; Splicing Factor Proline/Glutamine Rich (Polypyrimidine Tract-Binding Protein-Associated); Splicing Factor Proline/Glutamine Rich (Polypyrimidine Tract Binding Protein Associated); Polypyrimidine Tract-Binding Protein-Associated Splicing Factor; Polypyrimidine Tract-Binding Protein-Associated-Splicing Factor; Epididymis Secretory Sperm Binding Protein; PTB-Associated Splicing Factor; PTB-Associated-Splicing Factor; HPOMp100; POMP100

Background:

UniProt Entry: [P23246](#);NCBI Gene Entry: [6421](#)

Application Information

Molecular Weight: Predicted, 76 kDa, observed, 100 kDa Clonality: Rabbit monoclonal antibody Clone ID: 24GB1220 Species Reactivity: Human, Mouse, Rat Applications Tested: Western Blotting (WB), Flow Cytometry (FCM), Immunocytochemistry (IC)

Immunogen

A synthesized peptide derived from human SFPQ

Isotype

Rabbit IgG

Storage Buffer

Supplied in PBS (pH 7.4) containing 50% glycerol, and 0.02% sodium azide.

Storage

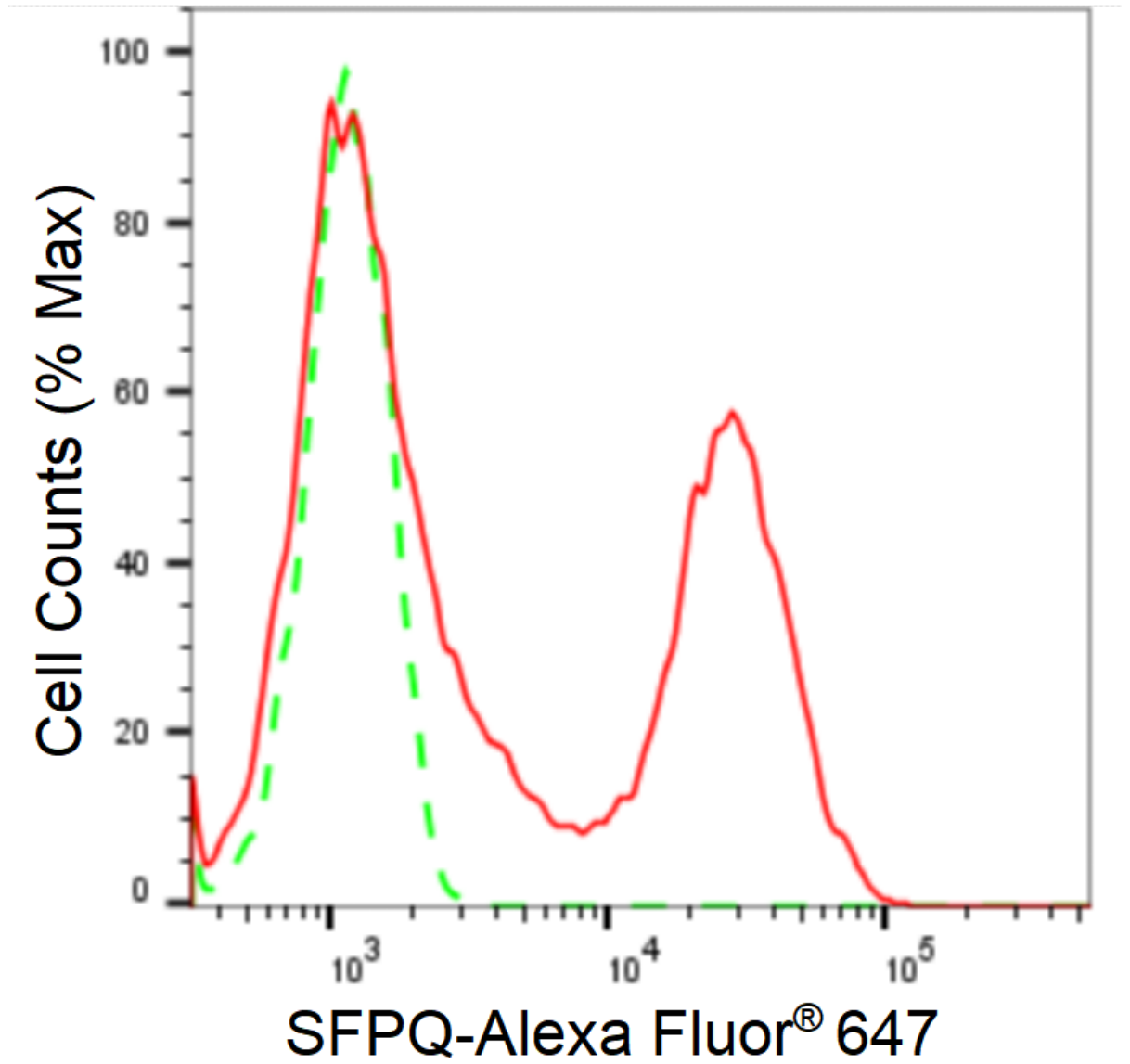
Store at -20 °C for one year.

Recommended Dilutions

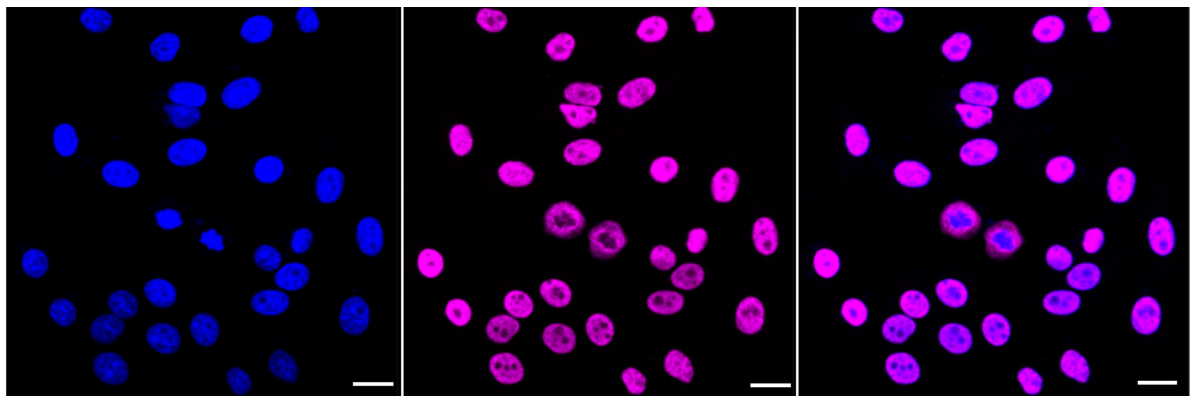
Western Blotting (WB): 1:1,000-1:5,000 Flow Cytometry (FCM): 1:2,000
Immunocytochemistry (IC): 1:1,000

Protocols

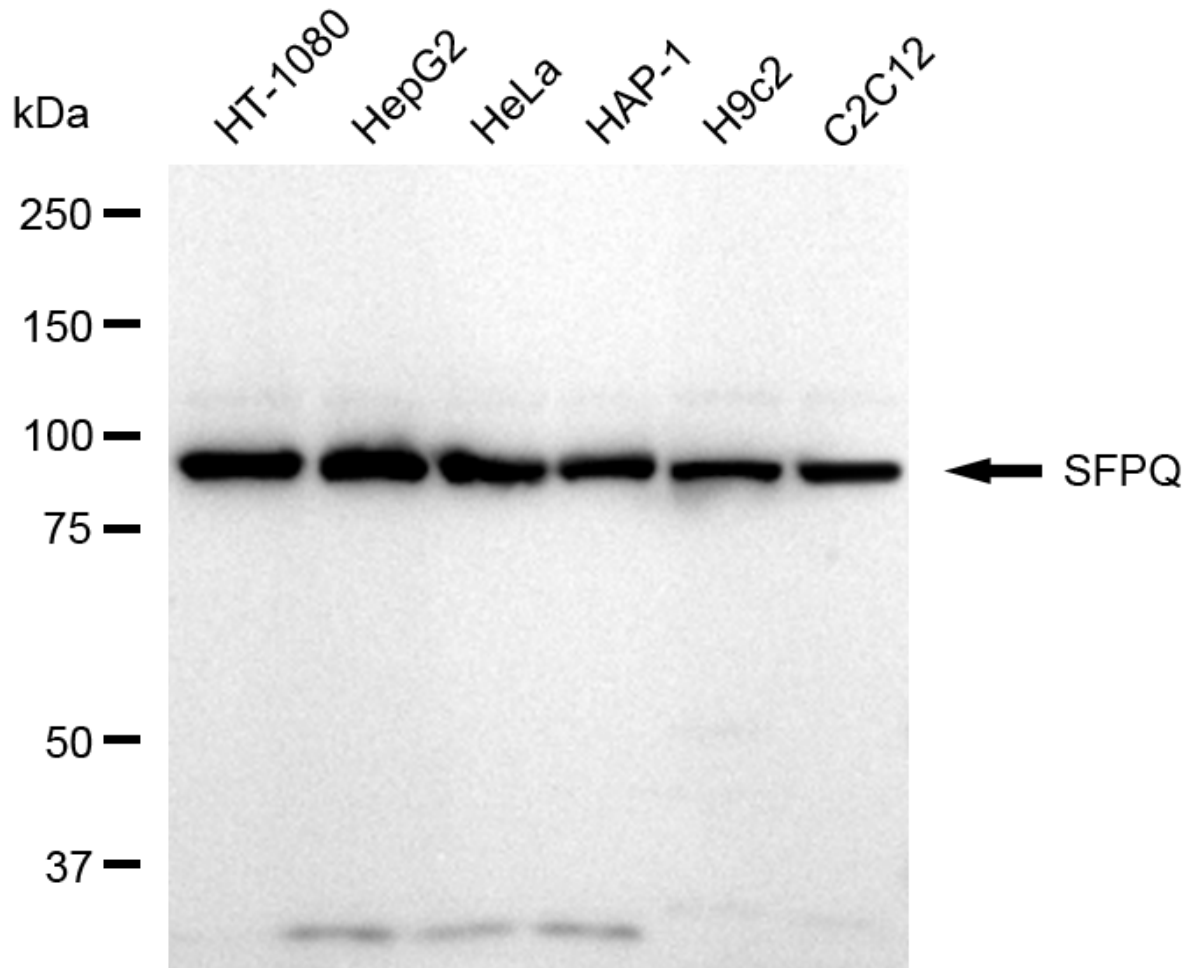
For general and specific antibody protocols please visit our website. Read all instructions before using this product.



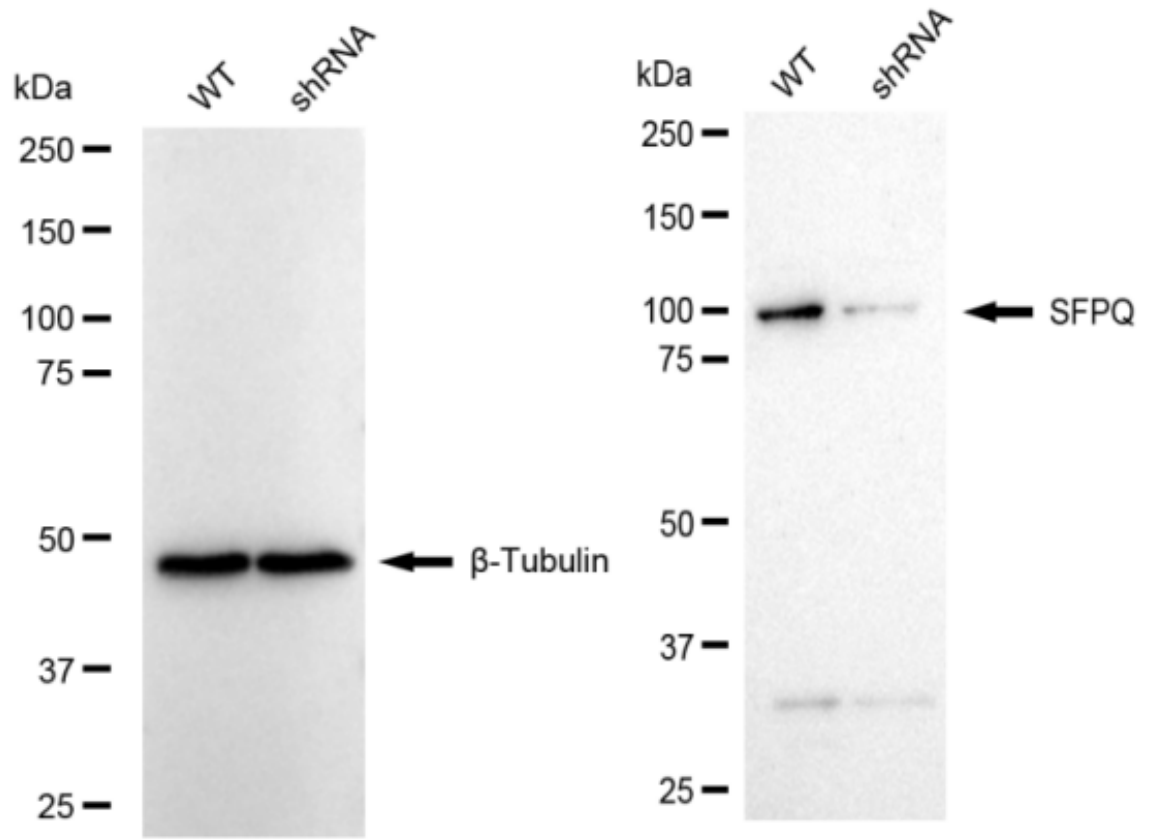
Flow cytometric analysis of SFPQ expression in HepG2 cells using anti-SFPQ antibody 1:2,000. Green, isotype control; red, SFPQ.



Immunocytochemical staining of HepG2 cells with anti-SFPQ antibody 1:1,000. Nuclei were stained blue with DAPI; SFPQ was stained magenta with Alexa Fluor® 647. Images were taken using Leica stellaris 5. Protein abundance based on laser Intensity and smart gain: High. Scale bar: 20 μ m.



Western blotting analysis using anti-SFPQ antibody 1:5,000 and HRP-conjugated goat anti-rabbit secondary antibody 1:20,000 respectively. Image was developed using FeQ™ ECL Substrate Kit .



Western blotting analysis using anti-SFPQ antibody 1:5,000 and HRP-conjugated goat anti-rabbit secondary antibody 1:20,000 respectively. Image was developed using NaQ™ ECL Substrate Kit .