



SunLong Biotech Co.,LTD  
Tel: 0086-571- 56623320 Fax:0086-571- 56623318  
E-mail:sales@sunlongbiotech.com  
www.sunlongbiotech.com

## **[KD-Validated] Anti-Serpin Family E Member 1 Rabbit Monoclonal Antibody**

Cat No.: KD-10807

### **Aliases:**

SERPINE1; Serpin Family E Member 1; PAI 2; PLANH1; PAI1; Serine (Or Cysteine) Proteinase Inhibitor, Clade E (Nexin, Plasminogen Activator Inhibitor Type 1), Member 1; Endothelial Plasminogen Activator Inhibitor; Plasminogen Activator Inhibitor 1; Serpin E1; PAI-1; Serpin Peptidase Inhibitor, Clade E (Nexin, Plasminogen Activator Inhibitor Type 1), Member 1; Plasminogen Activator Inhibitor, Type I

### **Background:**

UniProt Entry: [P05121](#);NCBI Gene Entry: [5054](#)

### **Application Information**

Molecular Weight: Predicted, 45 kDa, observed, 45 kDa Clonality: Rabbit monoclonal antibody Clone ID: 24GB4055 Species Reactivity: Human Applications Used: Western Blotting (WB), Flow Cytometry (FCM), Immunocytochemistry (IC)

### **Immunogen**

A synthesized peptide derived from human PAI1

### **Isotype**

Rabbit IgG

### **Storage Buffer**

Supplied in PBS (pH 7.4) containing 50% glycerol, and 0.02% sodium azide.

### Storage

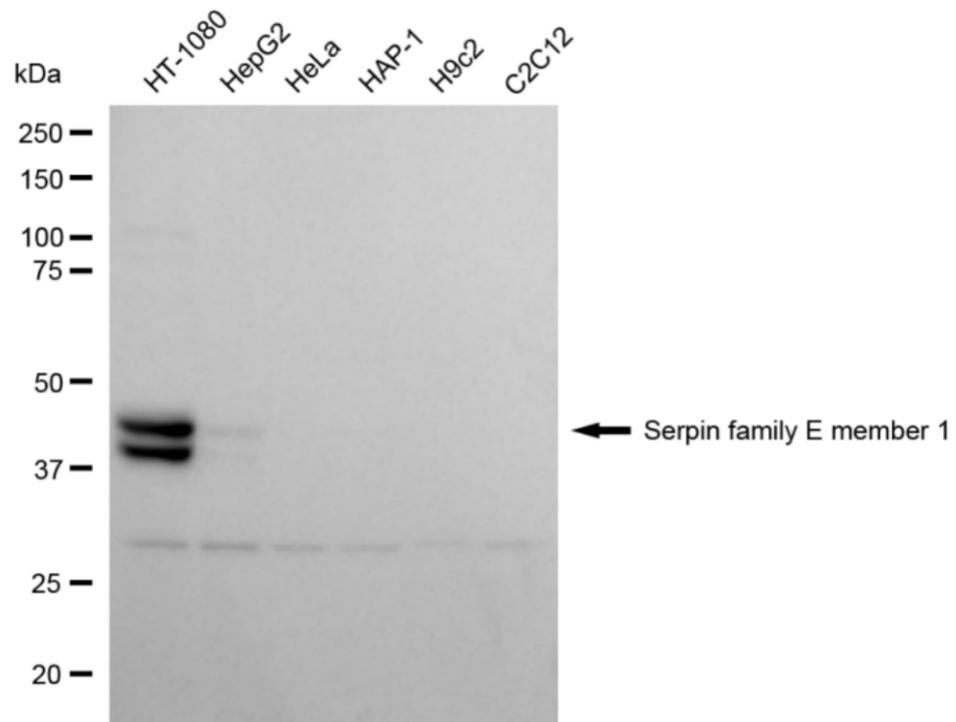
Store at -20 °C for one year.

### Recommended Dilutions

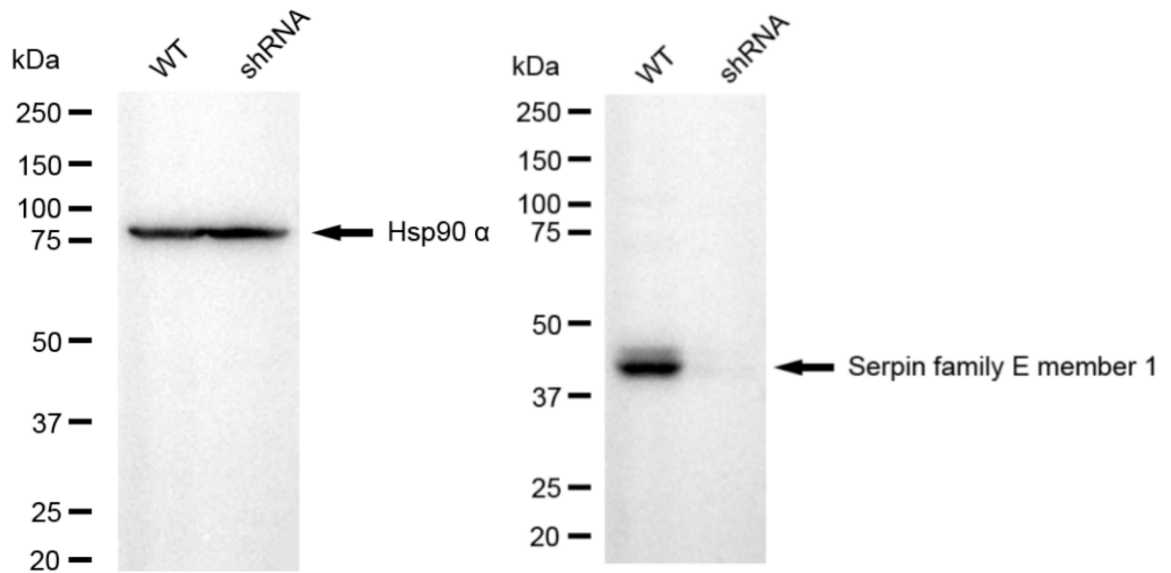
Western Blotting (WB): 1:1,000-1:5,000 Flow Cytometry (FCM): 1:2,000  
Immunocytochemistry (IC): 1:1,000

### Protocols

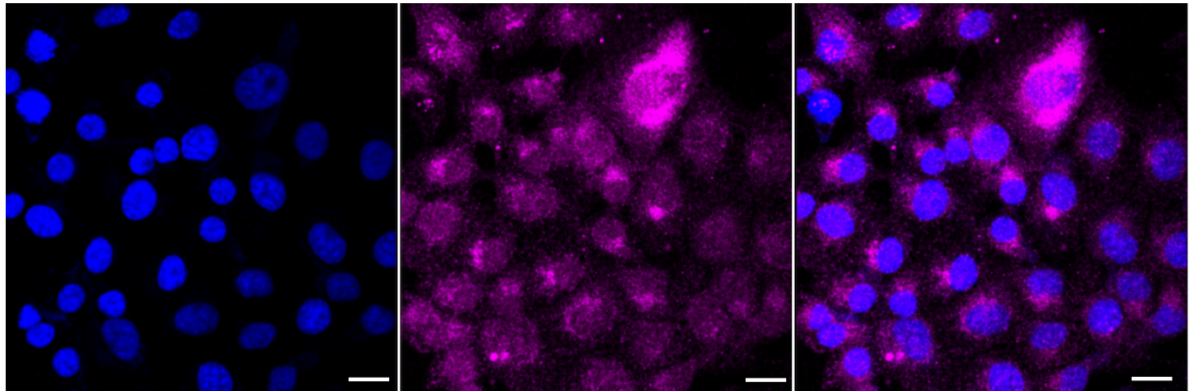
For general and specific antibody protocols please visit our website. Read all instructions before using this product.



Western blotting analysis using anti-serpin family E member 1 antibody 1:5,000 and HRP-conjugated goat anti-rabbit secondary antibody 1:20,000 respectively. Image was developed using FeQTM ECL Substrate Kit .



Western blotting analysis using anti-serpin family E member 1 antibody 1:5,000 and HRP-conjugated goat anti-rabbit secondary antibody 1:20,000 respectively. Image was developed using NaQ™ ECL Substrate Kit 1:2,000. Green, isotype control; red, Serpin family E member 1.



Immunocytochemical staining of HT-1080 cells with anti-Serpin family E member 1 antibody 1:1,000 . Nuclei were stained blue with DAPI; Serpin family E member 1 was stained magenta with Alexa Fluor® 647. Images were taken using Leica stellaris 5. Protein abundance based on laser Intensity and smart gain: Low. Scale bar: 20  $\mu$ m.