



SunLong Biotech Co.,LTD
Tel: 0086-571- 56623320 Fax:0086-571- 56623318
E-mail:sales@sunlongbiotech.com
www.sunlongbiotech.com

[KD-Validated] Anti-Septin 2 Rabbit Monoclonal Antibody

Cat No.: KD-10806

Aliases:

Septin 2; KIAA0158; Septin-2; HNedd5; Pnutl3; DIFF6; NEDD5; SEPT2; Neural Precursor Cell Expressed, Developmentally Down-Regulated 5; NEDD-5; Neural Precursor Cell Expressed Developmentally Down-Regulated Protein 5; Epididymis Secretory Sperm Binding Protein

Background:

UniProt Entry: [Q15019](#);NCBI Gene Entry: [4735](#)

Application Information

Molecular Weight: Predicted, 41 kDa, observed, 41 kDa Clonality: Rabbit monoclonal antibody Clone ID: 24GB1525 Species Reactivity: Human, Mouse, Rat Applications Tested: Western Blotting (WB), Flow Cytometry (FCM)

Immunogen

A synthesized peptide derived from human Septin 2

Isotype

Rabbit IgG

Storage Buffer

Supplied in PBS (pH 7.4) containing 50% glycerol, and 0.02% sodium azide.

Storage

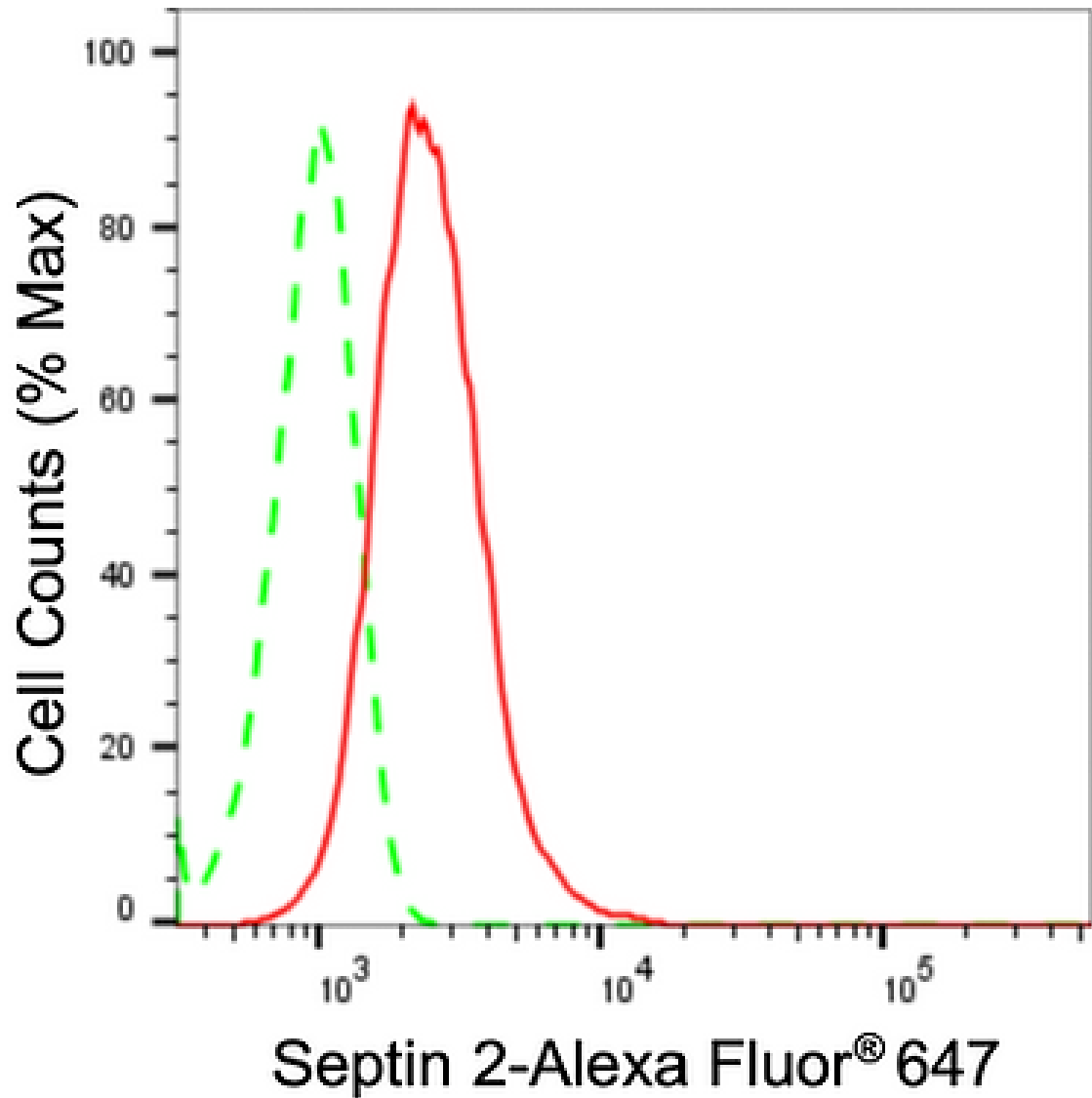
Store at -20 °C for one year.

Recommended Dilutions

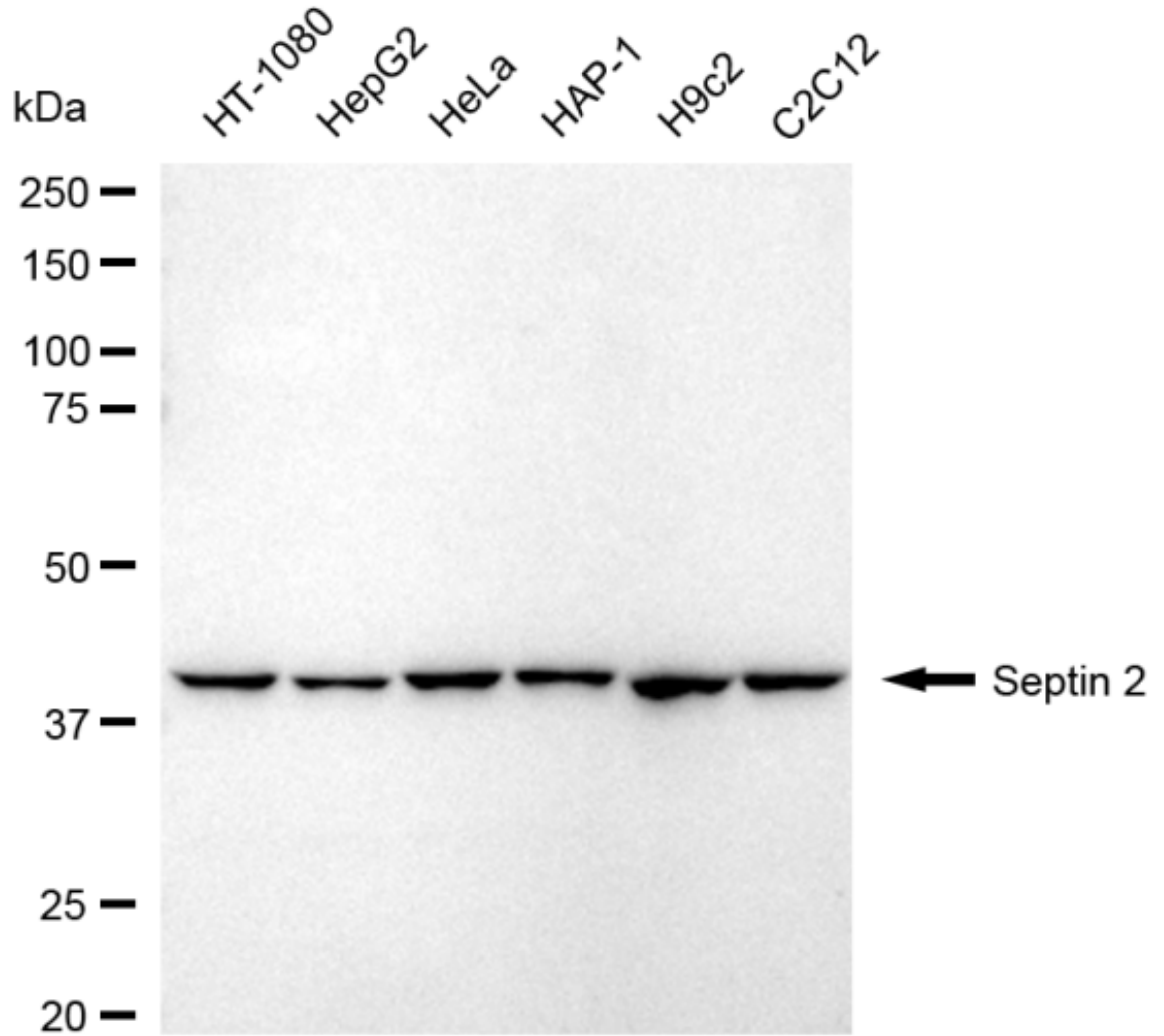
Western Blotting (WB): 1:1,000-1:5,000 Flow Cytometry (FCM): 1:2,000

Protocols

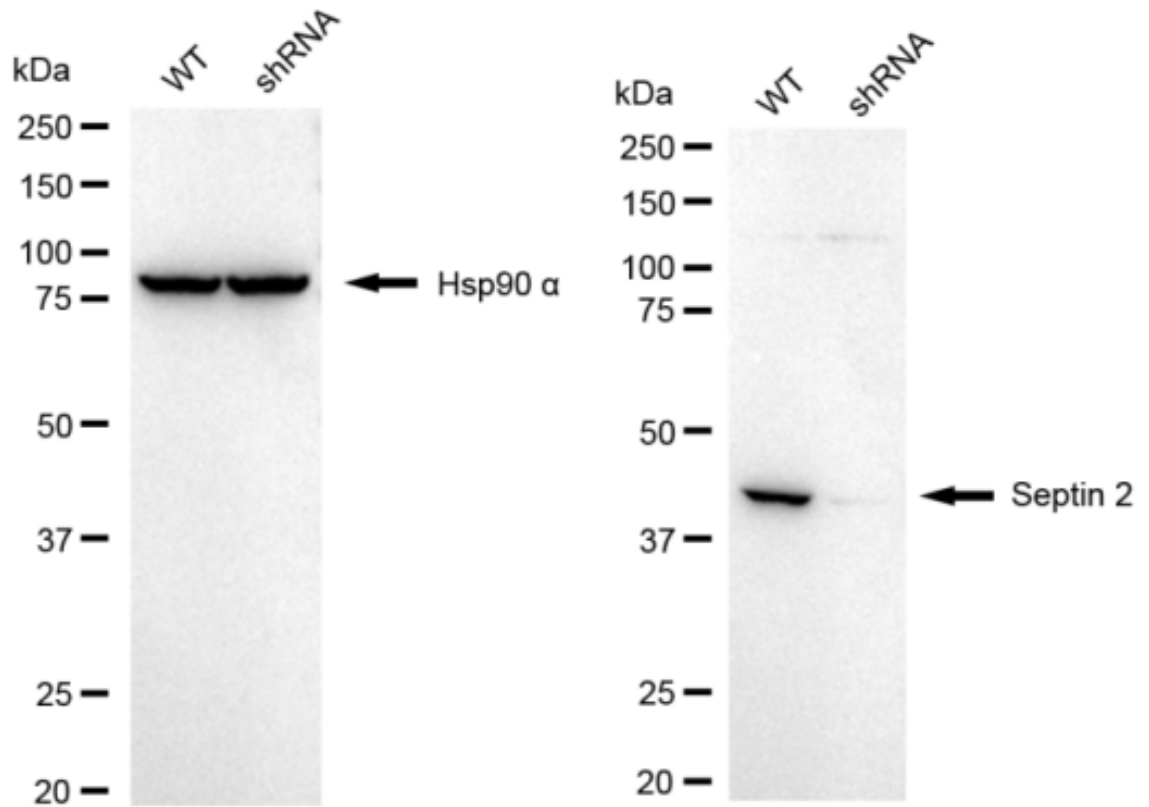
For general and specific antibody protocols please visit our website. Read all instructions before using this product.



Flow cytometric analysis of Septin 2 expression in C2C12 cells using anti-Septin 2 antibody 1:2,000. Green, isotype control; red, Septin 2.



Western blotting analysis using anti-Septin 2 antibody 1:5,000 and HRP-conjugated goat anti-rabbit secondary antibody 1:20,000 respectively. Image was developed using FeQ™ ECL Substrate Kit .



Western blotting analysis using anti-septin 2 antibody 1:5,000 and HRP-conjugated goat anti-rabbit secondary antibody 1:20,000 respectively. Image was developed using NaQ™ ECL Substrate Kit .