



SunLong Biotech Co.,LTD
Tel: 0086-571- 56623320 Fax:0086-571- 56623318
E-mail:sales@sunlongbiotech.com
www.sunlongbiotech.com

[KD-Validated] Anti-SEC24D Rabbit Monoclonal Antibody

Cat No.: KD-10805

Aliases:

SEC24D; SEC24 Homolog D, COPII Coat Complex Component; KIAA0755; Protein Transport Protein Sec24D; SEC24-Related Protein D; SEC24 (S. Cerevisiae) Related Gene Family, Member D; SEC24 Family, Member D (S. Cerevisiae); SEC24 Related Gene Family, Member D; SEC24 Family Member D; CLCRP2

Background:

UniProt Entry: [O94855](#);NCBI Gene Entry: [9871](#)

Application Information

Molecular Weight: Predicted, 113 kDa, observed, 113 kDa Clonality: Rabbit monoclonal antibody Clone ID: 23GB2510 Species Reactivity: Human, Mouse, Rat Applications Tested: Western Blotting (WB), Flow Cytometry (FCM), Immunocytochemistry (IC)

Immunogen

A synthesized peptide derived from human SEC24D

Isotype

Rabbit IgG

Storage Buffer

Supplied in PBS (pH 7.4) containing 50% glycerol, and 0.02% sodium azide.

Storage

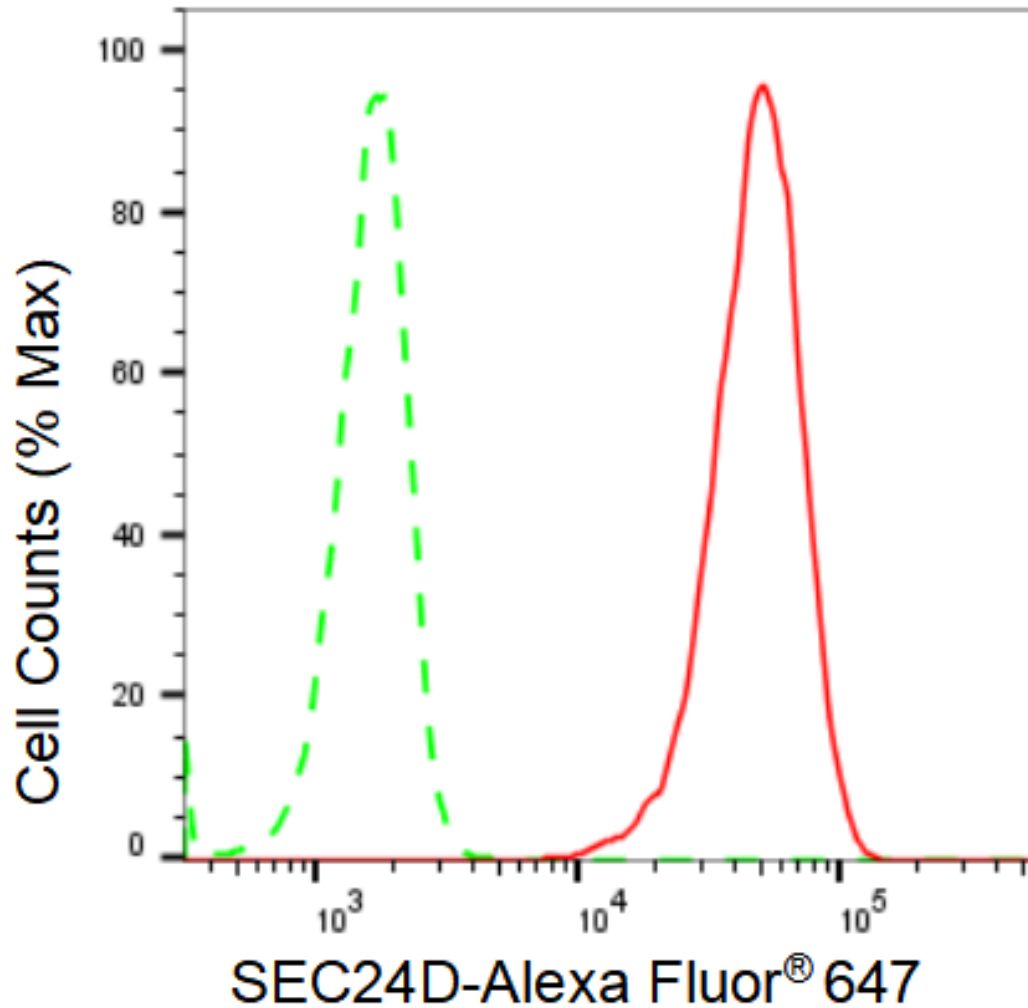
Store at -20 °C for one year.

Recommended Dilutions

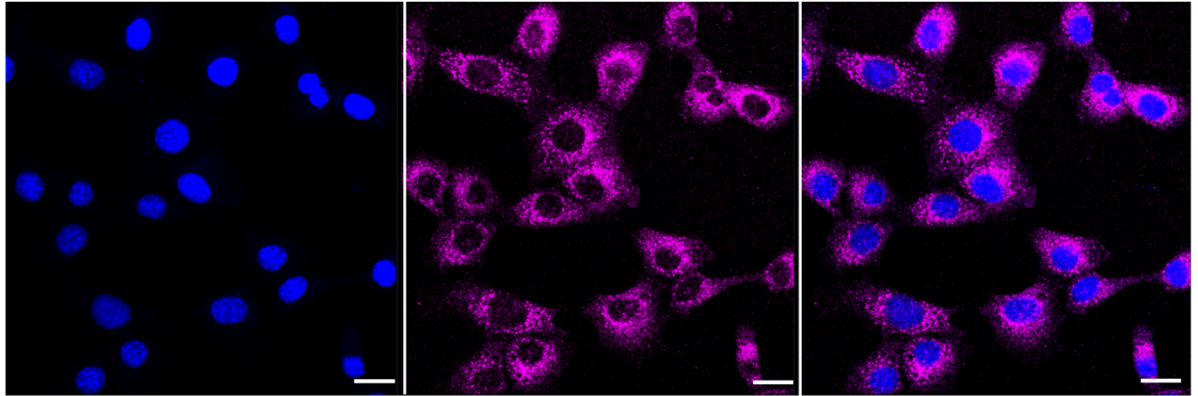
Western Blotting (WB): 1:1,000-1:5,000 Flow Cytometry (FCM): 1:2,000
Immunocytochemistry (IC): 1:1,000

Protocols

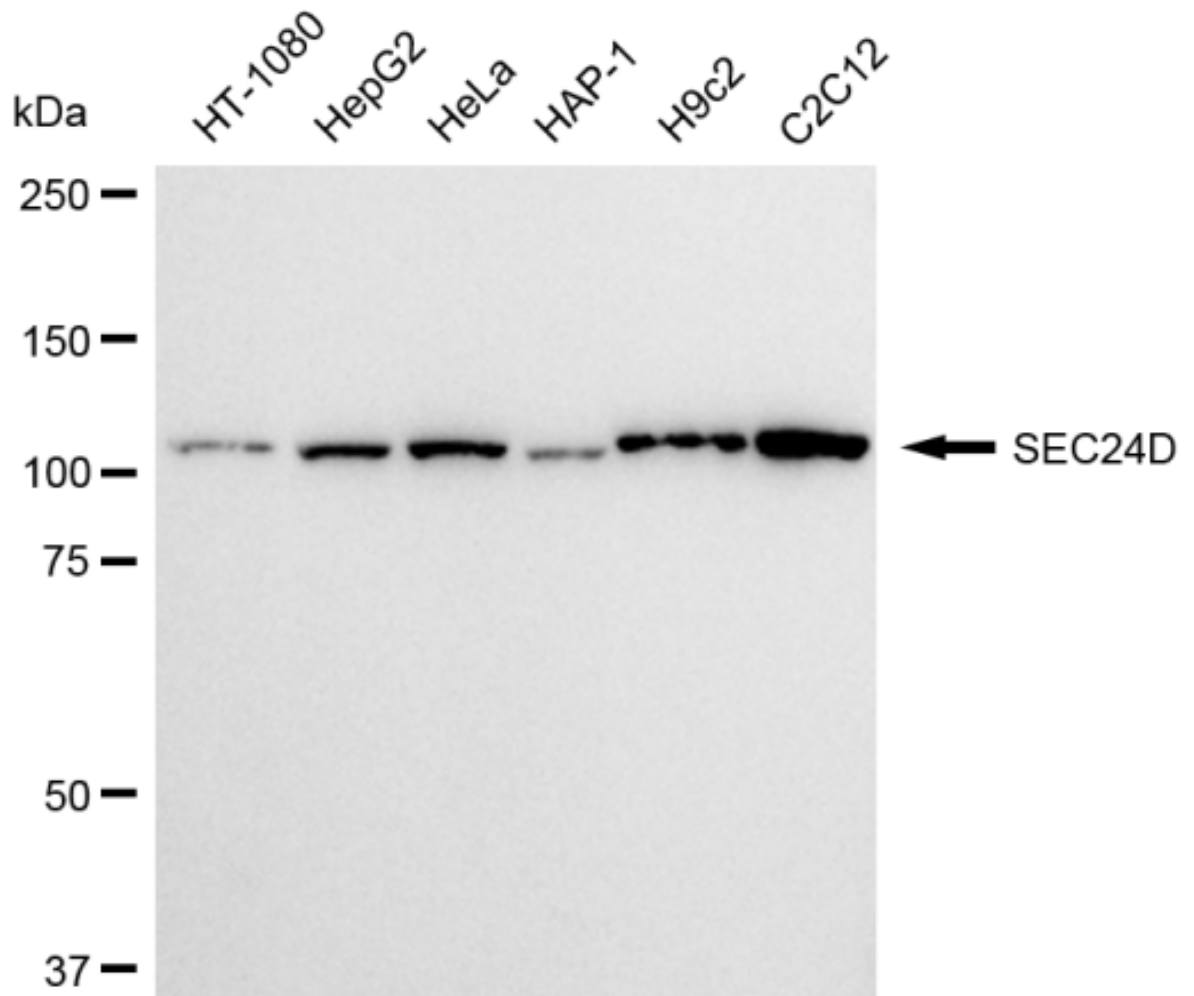
For general and specific antibody protocols please visit our website. Read all instructions before using this product.



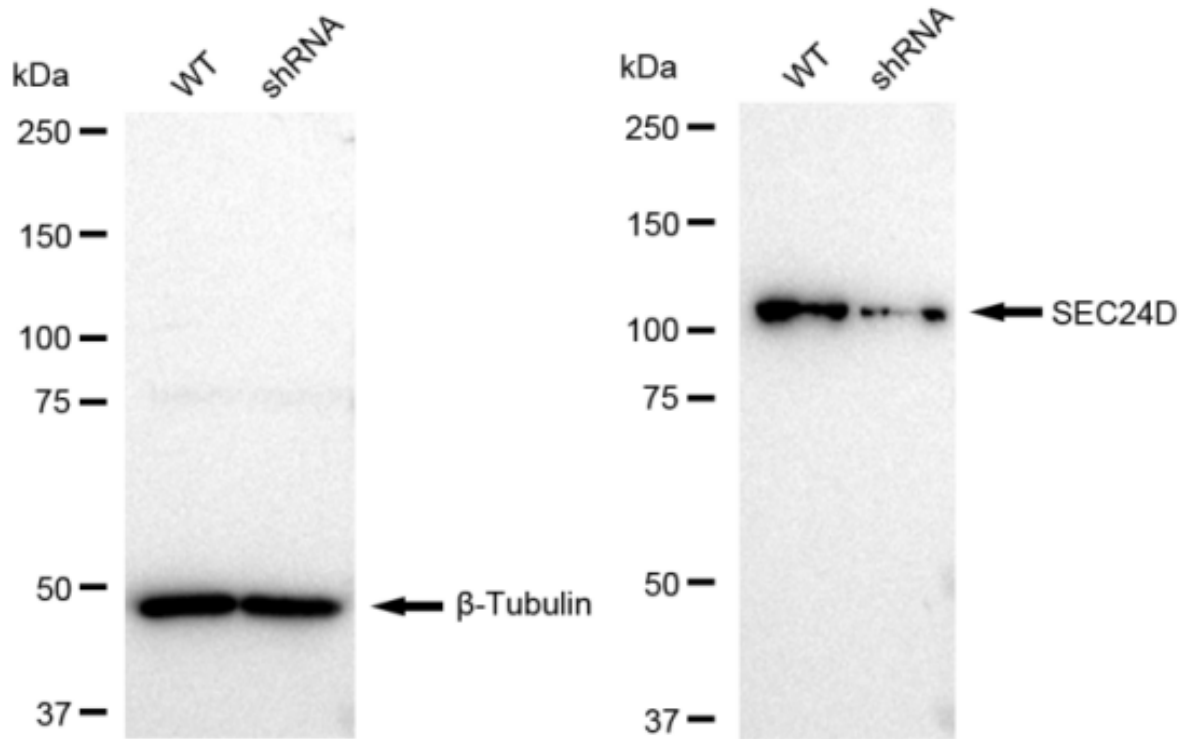
Flow cytometric analysis of SEC24D expression in C2C12 cells using SEC24D antibody 1:2,000. Green, isotype control; red, SEC24D.



Immunocytochemical staining of C2C12 cells with SEC24D antibody 1:1,000. Nuclei were stained blue with DAPI; SEC24D was stained magenta with Alexa Fluor® 647. Images were taken using Leica stellaris 5. Protein abundance based on laser Intensity and smart gain: Medium. Scale bar: 20 μ m.



Western blotting analysis using anti-SEC24D antibody 1:5,000 and HRP-conjugated goat anti-rabbit secondary antibody 1:20,000 respectively. Image was developed using FeQ™ ECL Substrate Kit .



Western blotting analysis using anti-SEC24D antibody 1:5,000 and HRP-conjugated goat anti-rabbit secondary antibody 1:20,000 respectively. Image was developed using FeQ™ ECL Substrate Kit .