



SunLong Biotech Co.,LTD
Tel: 0086-571- 56623320 Fax:0086-571- 56623318
E-mail:sales@sunlongbiotech.com
www.sunlongbiotech.com

[KD-Validated] Anti-SDHC Rabbit Monoclonal Antibody

Cat No.: KD-10804

Aliases:

Succinate Dehydrogenase Complex Subunit C; CYB560; CybL; Succinate Dehydrogenase Complex, Subunit C, Integral Membrane Protein, 15kD; Succinate Dehydrogenase Cytochrome B560 Subunit, Mitochondrial; Succinate-Ubiquinone Oxidoreductase Cytochrome B Large Subunit; Succinate Dehydrogenase Cytochrome B; Large Subunit Of Cytochrome B; PGL3; SDH3; Succinate Dehydrogenase Complex, Subunit C, Integral Membrane Protein, 15kDa; Succinate Dehydrogenase Complex Subunit C Integral Membrane Protein 15kDa; Succinate Dehydrogenase 3, Integral Membrane Subunit; Succinate Dehydrogenase Cytochrome B560 Subunit; Cytochrome B Large Subunit Of Complex II; Integral Membrane Protein CII-3b; Integral Membrane Protein CII-3; PPGL3; QPs-1; QPS1; QPS1; CYBL

Background:

UniProt Entry: [Q99643](#);NCBI Gene Entry: [6391](#)

Application Information

Molecular Weight: Predicted, 18 kDa, observed, 12 kDa Clonality: Rabbit monoclonal antibody Clone ID: 24GB1075 Species Reactivity: Human, Mouse, Rat Applications Tested: Western Blotting (WB), Immunocytochemistry (IC)

Immunogen

A synthesized peptide derived from human SDHC

Isotype

Rabbit IgG

Storage Buffer

Supplied in PBS (pH 7.4) containing 50% glycerol, and 0.02% sodium azide.

Storage

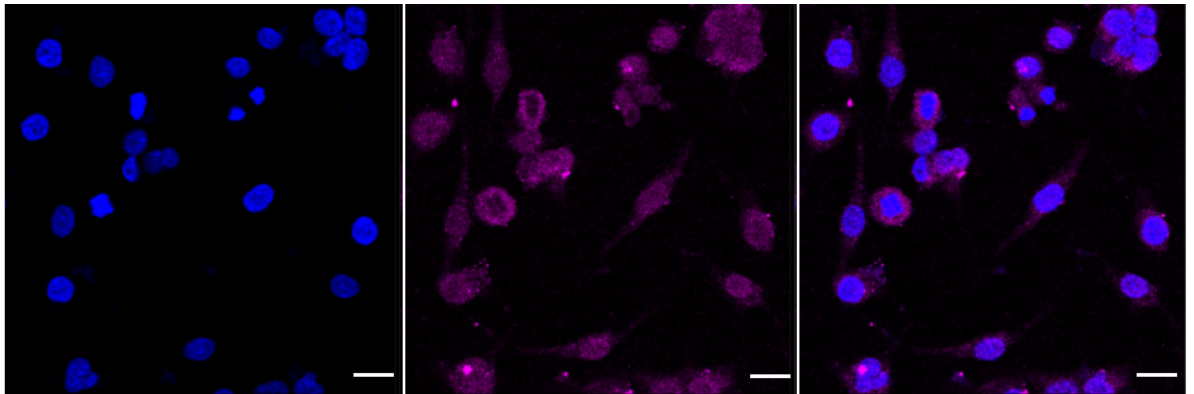
Store at -20 °C for one year.

Recommended Dilutions

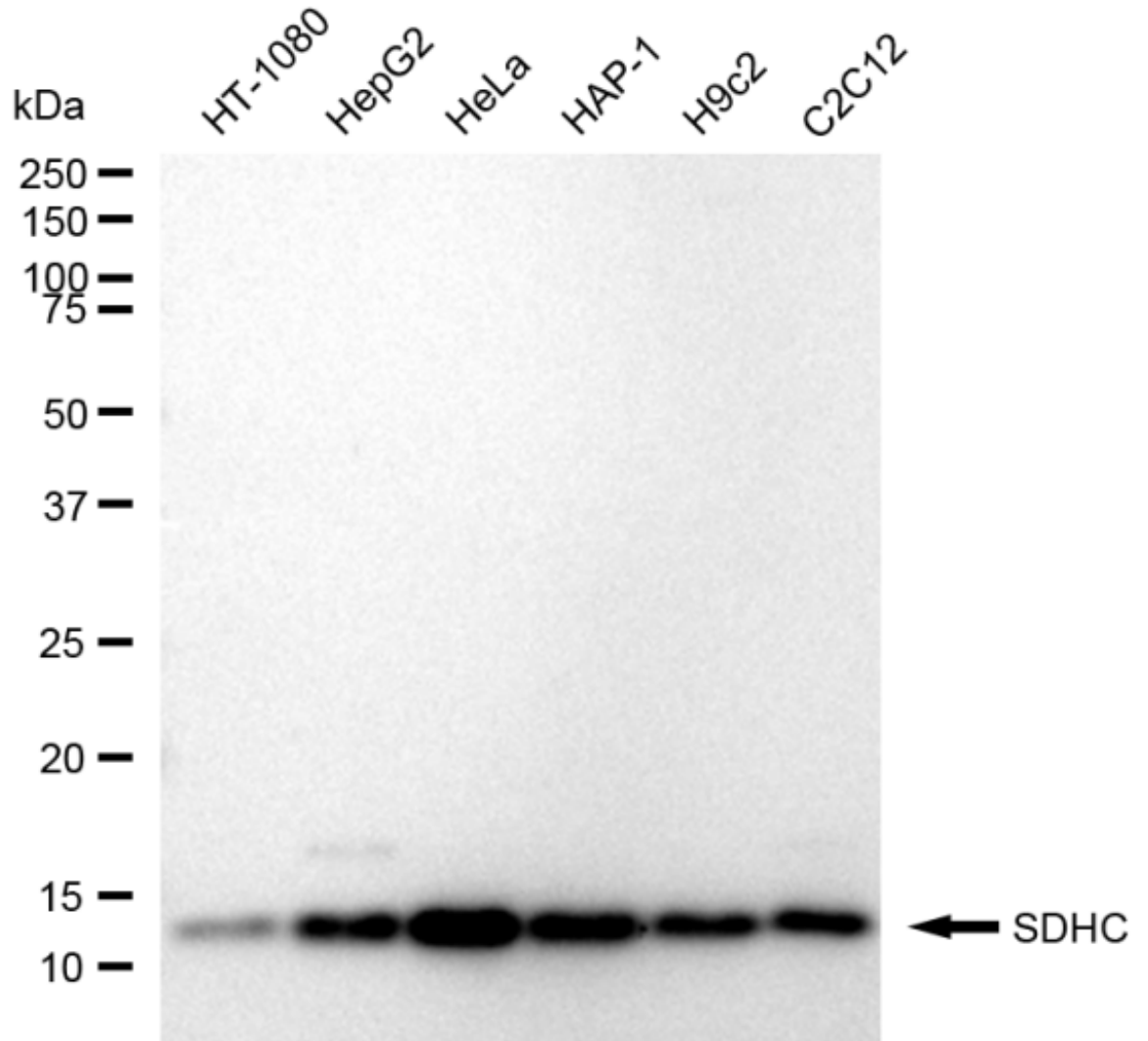
Western Blotting (WB): 1:1,000-1:5,000 Immunocytochemistry (IC): 1:1,000

Protocols

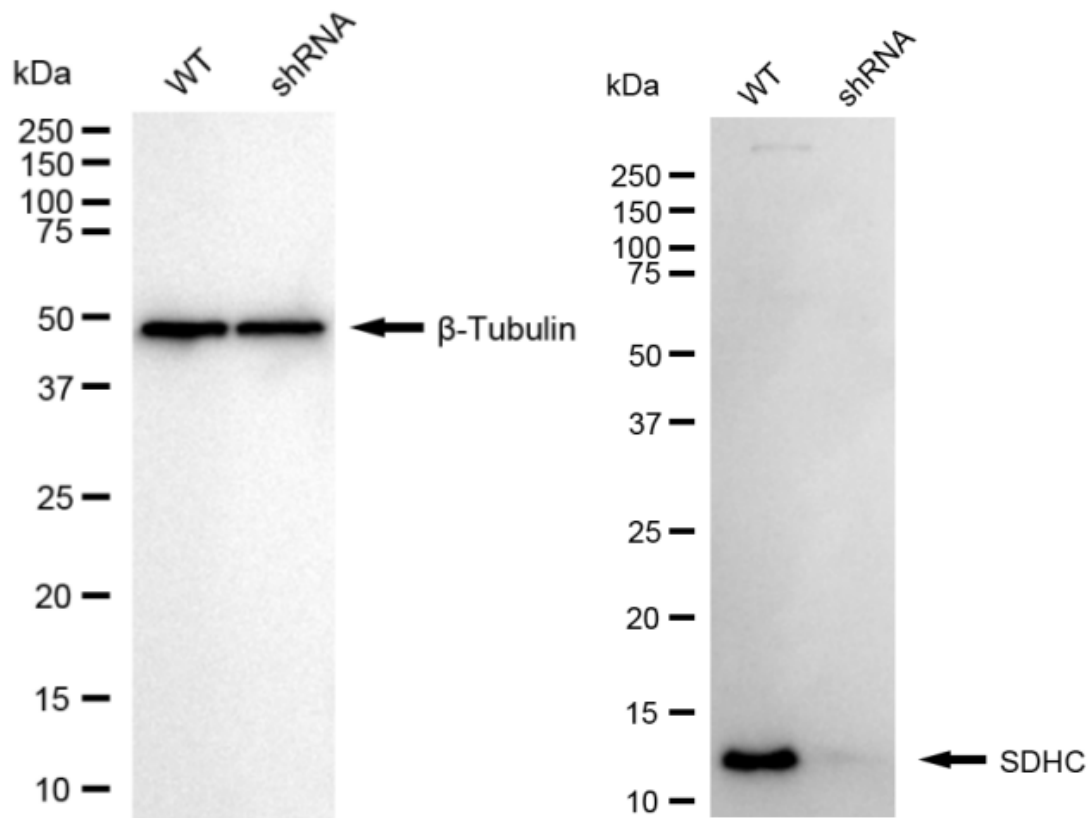
For general and specific antibody protocols please visit our website. Read all instructions before using this product.



Immunocytochemical staining of HeLa cells with anti-SDHC antibody 1:1,000. Nuclei were stained blue with DAPI; SDHC was stained magenta with Alexa Fluor® 647. Images were taken using Leica stellaris 5. Protein abundance based on laser Intensity and smart gain:Low . Scale bar: 20 µm.



Western blotting analysis using anti-SDHC antibody 1:5,000 and HRP-conjugated goat anti-rabbit secondary antibody 1:20,000 respectively. Image was developed using FeQ™ ECL Substrate Kit .



Western blotting analysis using anti-SDHC antibody 1:5,000 and HRP-conjugated goat anti-rabbit secondary antibody 1:20,000 respectively. Image was developed using NaQ™ ECL Substrate Kit .