



SunLong Biotech Co.,LTD  
Tel: 0086-571- 56623320 Fax:0086-571- 56623318  
E-mail:sales@sunlongbiotech.com  
www.sunlongbiotech.com

## [KD-Validated] Anti-Syndecan binding protein Rabbit Monoclonal Antibody

Cat No.: KD-10803

### Aliases:

SDCBP; Syndecan Binding Protein; MDA-9; SYCL; Syntenin-1; Pro-TGF-Alpha Cytoplasmic Domain-Interacting Protein 18; Syndecan-Binding Protein 1; Scaffold Protein Pbp1; TACIP18; SDCBP1; MDA9; Melanoma Differentiation Associated Protein-9; Melanoma Differentiation-Associated Protein 9; Syndecan Binding Protein (Syntenin); Syntenin; ST1

### Background:

UniProt Entry: [O00560](#);NCBI Gene Entry: [6386](#)

### Application Information

Molecular Weight: Predicted, 32 kDa, observed, 32 kDa Clonality: Rabbit monoclonal antibody Clone ID: 23GB2185 Species Reactivity: Human Applications Used: Western Blotting (WB), Flow Cytometry (FCM), Immunocytochemistry (IC)

### Immunogen

A synthesized peptide derived from human Syntenin

### Isotype

Rabbit IgG

### Storage Buffer

Supplied in PBS (pH 7.4) containing 50% glycerol, and 0.02% sodium azide.

#### Storage

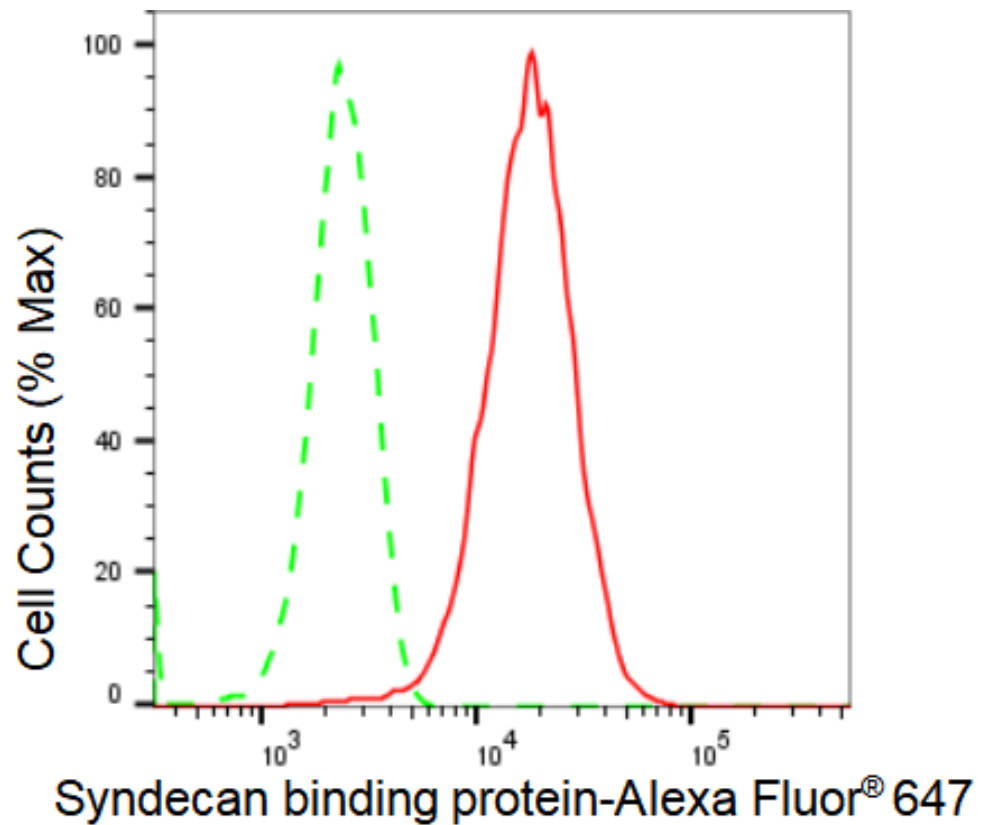
Store at -20 °C for one year.

#### Recommended Dilutions

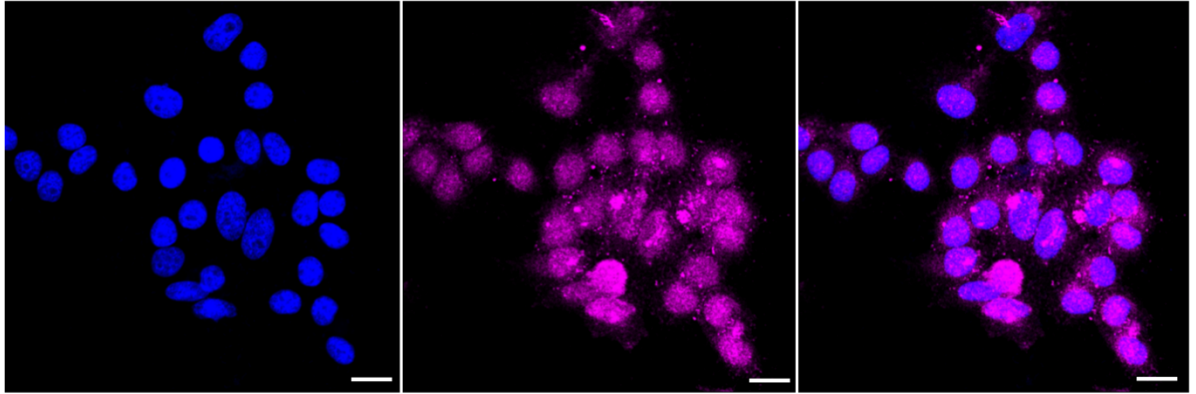
Western Blotting (WB): 1:1,000-1:5,000 Flow Cytometry (FCM): 1:2,000  
Immunocytochemistry (IC): 1:1,000

#### Protocols

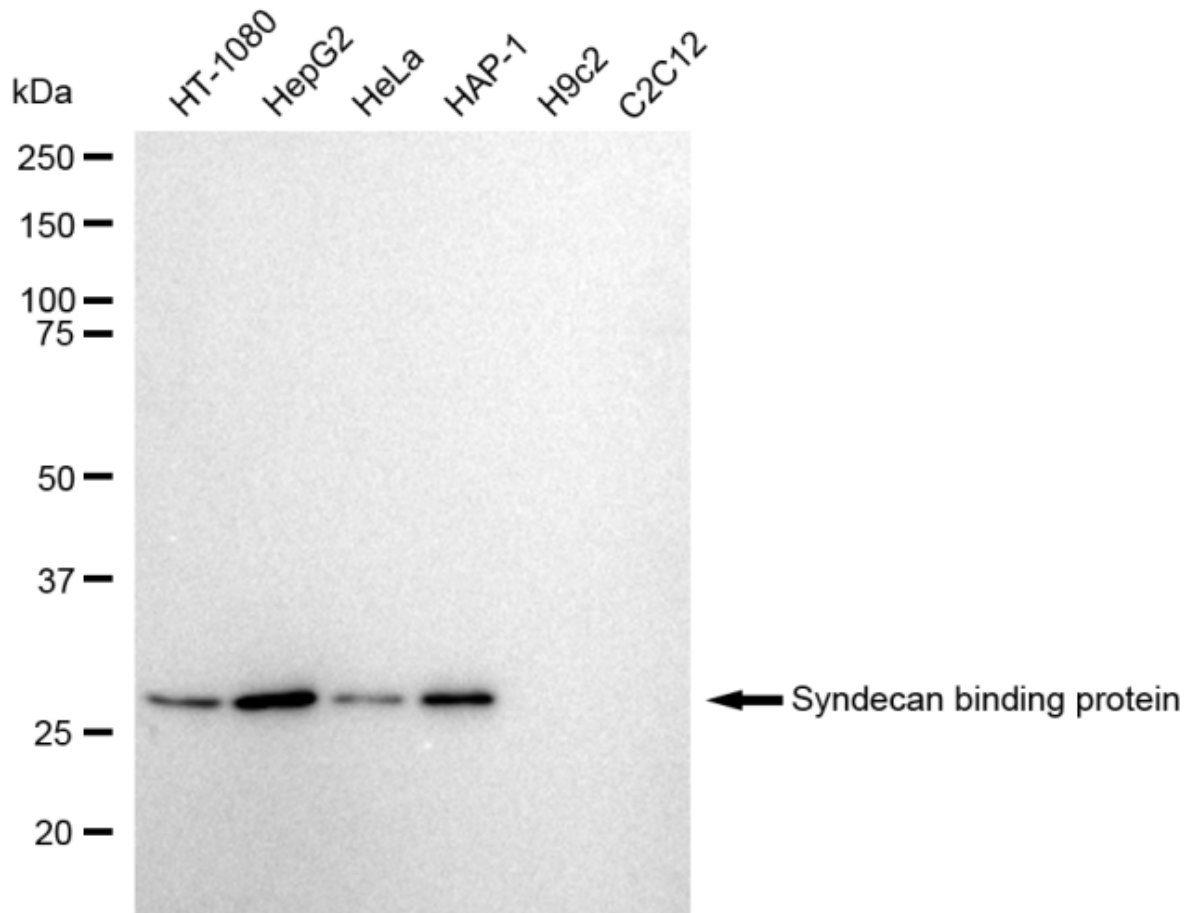
For general and specific antibody protocols please visit our website. Read all instructions before using this product.



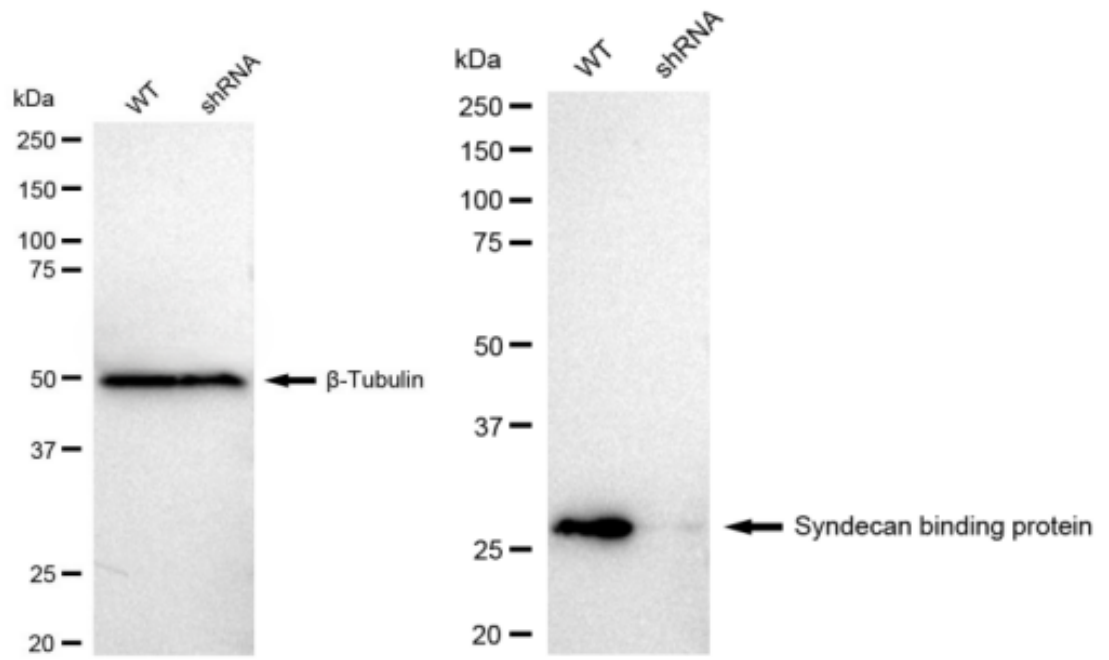
Flow cytometric analysis of Syndecan binding protein expression in HepG2 cells using Syndecan binding protein antibody 1:2,000. Green, isotype control; red, Syndecan binding protein.



Immunocytochemical staining of HepG2 cells with Syndecan binding protein antibody 1:1,000. Nuclei were stained blue with DAPI; Syndecan binding protein was stained magenta with Alexa Fluor® 647. Images were taken using Leica stellaris 5. Protein abundance based on laser Intensity and smart gain: Medium. Scale bar: 20  $\mu$ m.



Western blotting analysis using anti-Syndecan binding protein antibody 1:5,000 and HRP-conjugated goat anti-rabbit secondary antibody 1:20,000 respectively. Image was developed using FeQ™ ECL Substrate Kit .



Western blotting analysis using anti-Syndecan binding protein antibody 1:5,000 and HRP-conjugated goat anti-rabbit secondary antibody 1:20,000 respectively. Image was developed using FeQ™ ECL Substrate Kit .