



SunLong Biotech Co.,LTD
Tel: 0086-571- 56623320 Fax:0086-571- 56623318
E-mail:sales@sunlongbiotech.com
www.sunlongbiotech.com

[KD-Validated] Anti-SCARB1 Rabbit Monoclonal Antibody

Cat No.: KD-10802

Aliases:

SCARB1; Scavenger Receptor Class B Member 1; CLA-1; SR-BI; SRB1; CLA1; CD36L1; CD36 Antigen (Collagen Type I Receptor, Thrombospondin Receptor)-Like 1; CD36 And LIMPII Analogous 1; Collagen Type I Receptor, Thrombospondin Receptor-Like 1; Scavenger Receptor Class B, Member 1; Scavenger Receptor Class B Type III; CD36 Antigen-Like 1; CD36 Antigen; HDLQTL6; HDLCQ6

Background:

UniProt Entry: [Q8WTV0](#);NCBI Gene Entry: [949](#)

Application Information

Molecular Weight: Predicted, 61 kDa, observed, 75 kDa Clonality: Rabbit monoclonal antibody Clone ID: 24GB1395 Spncies Reactivity: Human, Rat Applications Tested: Western Blotting (WB), Immunocytochemistry (IC)

Immunogen

A synthesized peptide derived from human Scavenging Receptor SR-BI

Isotype

Rabbit IgG

Storage Buffer

Supplied in PBS (pH 7.4) containing 50% glycerol, and 0.02% sodium azide.

Storage

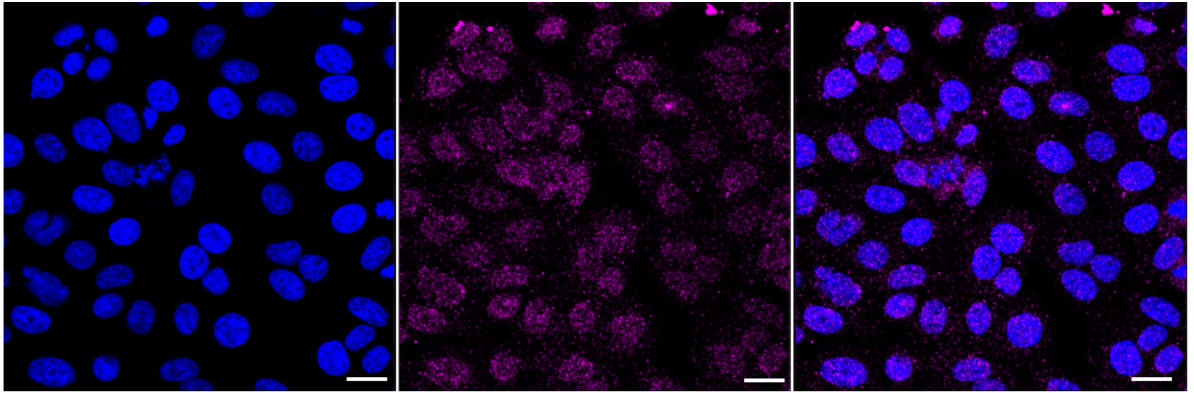
Store at -20 °C for one year.

Recommended Dilutions

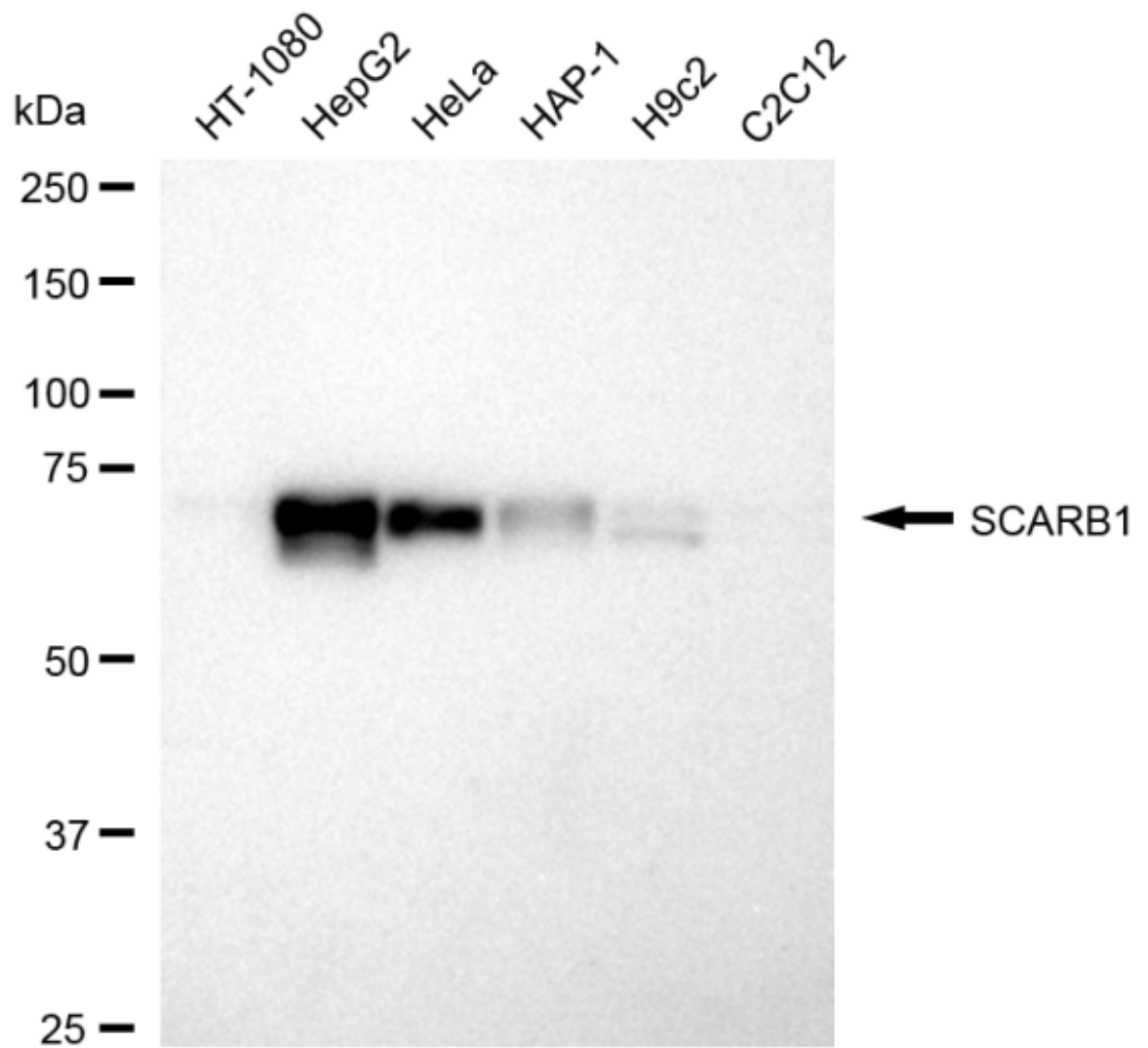
Western Blotting (WB): 1:1,000-1:5,000 Immunocytochemistry (IC): 1:1,000

Protocols

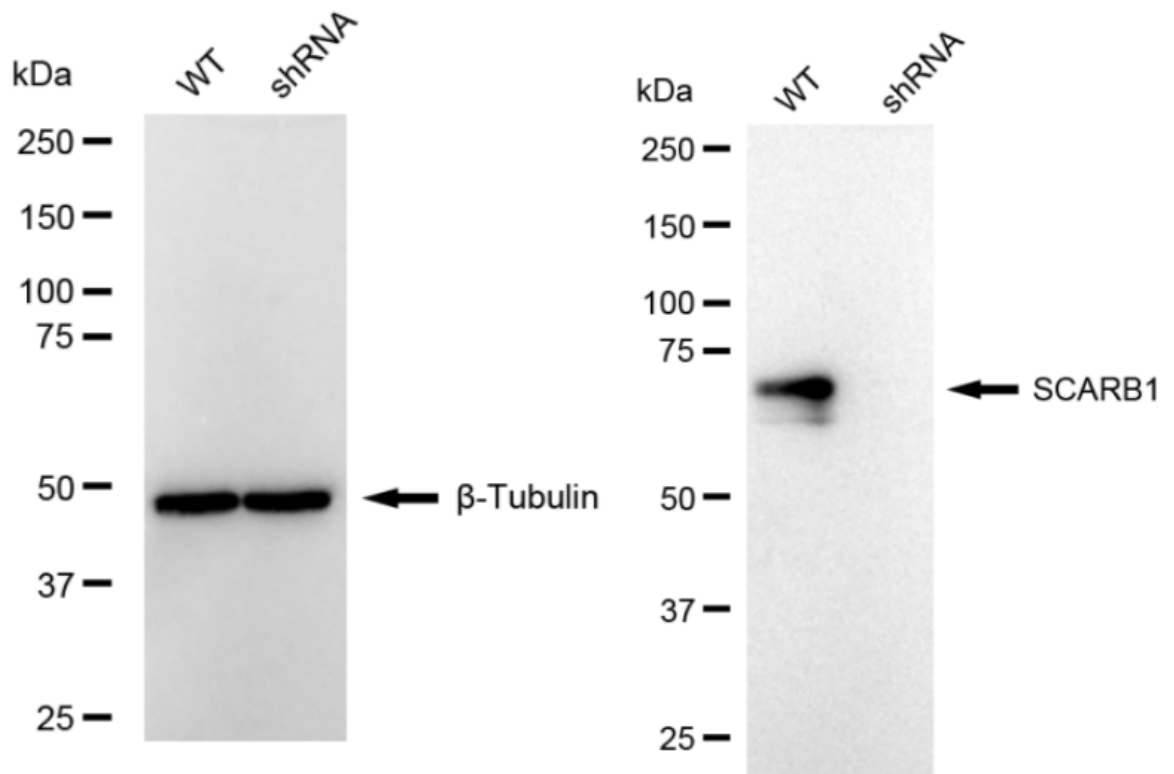
For general and specific antibody protocols please visit our website. Read all instructions before using this product.



Immunocytochemical staining of HepG2 cells with anti-SCARB1 antibody 1:1,000. Nuclei were stained blue with DAPI; SCARB1 was stained magenta with Alexa Fluor® 647. Images were taken using Leica stellaris 5. Protein abundance based on laser Intensity and smart gain: Medium. Scale bar: 20 µm.



Western blotting analysis using anti-SCARB1 antibody 1:5,000 and HRP-conjugated goat anti-rabbit secondary antibody 1:20,000 respectively. Image was developed using FeQ™ ECL Substrate Kit .



Western blotting analysis using anti-SCARB1 antibody 1:5,000 and HRP-conjugated goat anti-rabbit secondary antibody 1:20,000 respectively. Image was developed using NaQ™ ECL Substrate Kit .