



SunLong Biotech Co.,LTD
Tel: 0086-571- 56623320 Fax:0086-571- 56623318
E-mail:sales@sunlongbiotech.com
www.sunlongbiotech.com

[KD-Validated] Anti-SAMM50 Rabbit Monoclonal Antibody

Cat No.: KD-10801

Aliases:

SAMM50 Sorting And Assembly Machinery Component; TRG-3; SAM50; YNL026W; CGI-51; OMP85; TOB55; Sorting And Assembly Machinery Component 50 Homolog; Transformation-Related Gene 3 Protein; Sorting And Assembly Machinery Component 50 Homolog (*S. Cerevisiae*); Sorting And Assembly Machinery 50kDa

Background:

UniProt Entry: [Q9Y512](#);NCBI Gene Entry: [25813](#)

Application Information

Molecular Weight: Predicted, 52 kDa, observed, 52 kDa Clonality: Rabbit monoclonal antibody Clone ID: 24GB1135 Species Reactivity: Human, Mouse, Rat Applications Tested: Western Blotting (WB), Flow Cytometry (FCM), Immunocytochemistry (IC)

Immunogen

A synthesized peptide derived from human SAMM50

Isotype

Rabbit IgG

Storage Buffer

Supplied in PBS (pH 7.4) containing 50% glycerol, and 0.02% sodium azide.

Storage

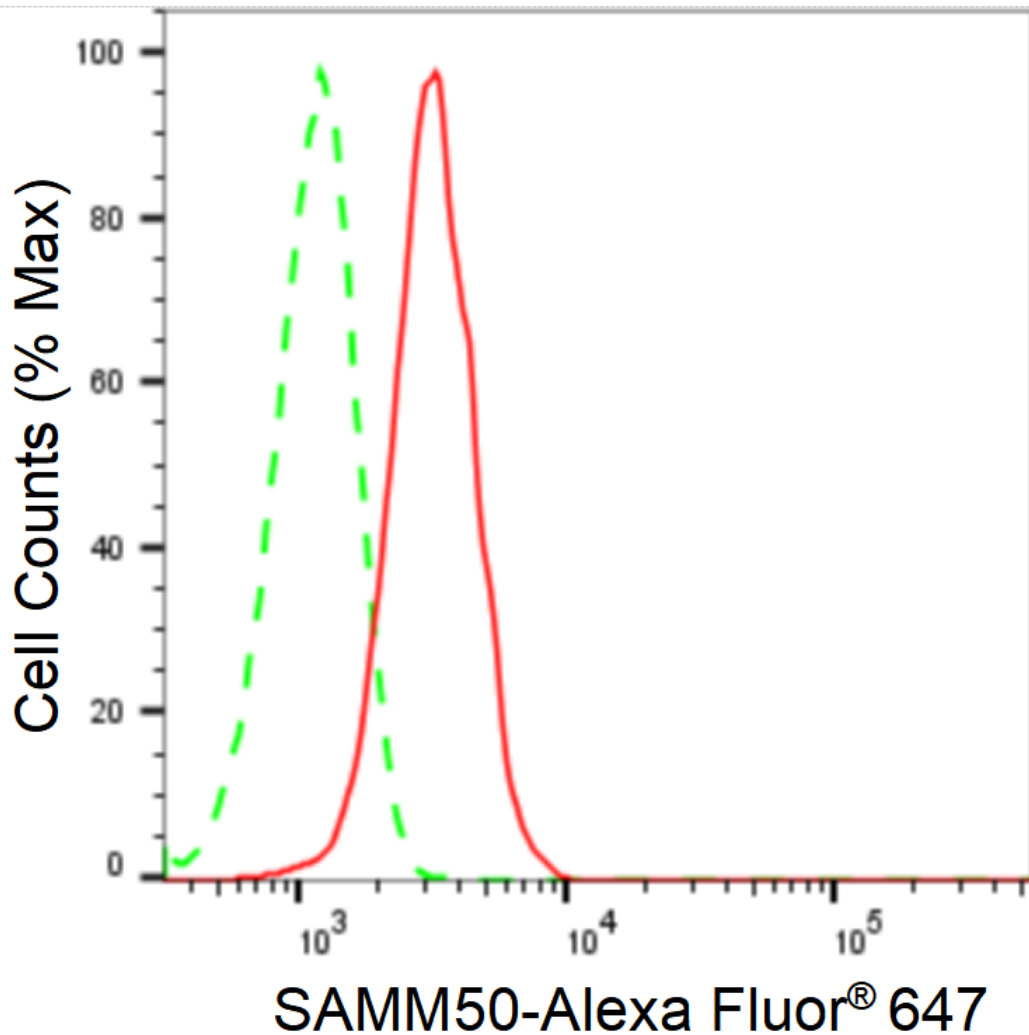
Store at -20 °C for one year.

Recommended Dilutions

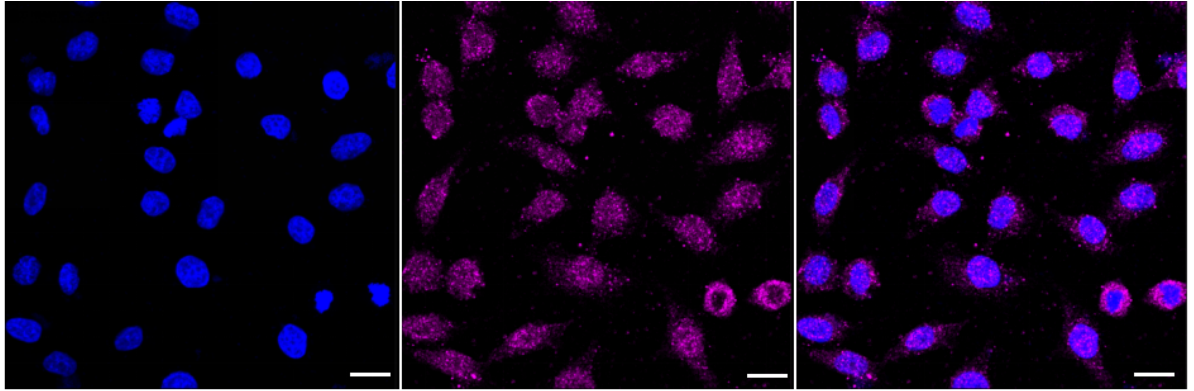
Western Blotting (WB): 1:1,000-1:5,000 Flow Cytometry (FCM): 1:2,000
Immunocytochemistry (IC): 1:1,000

Protocols

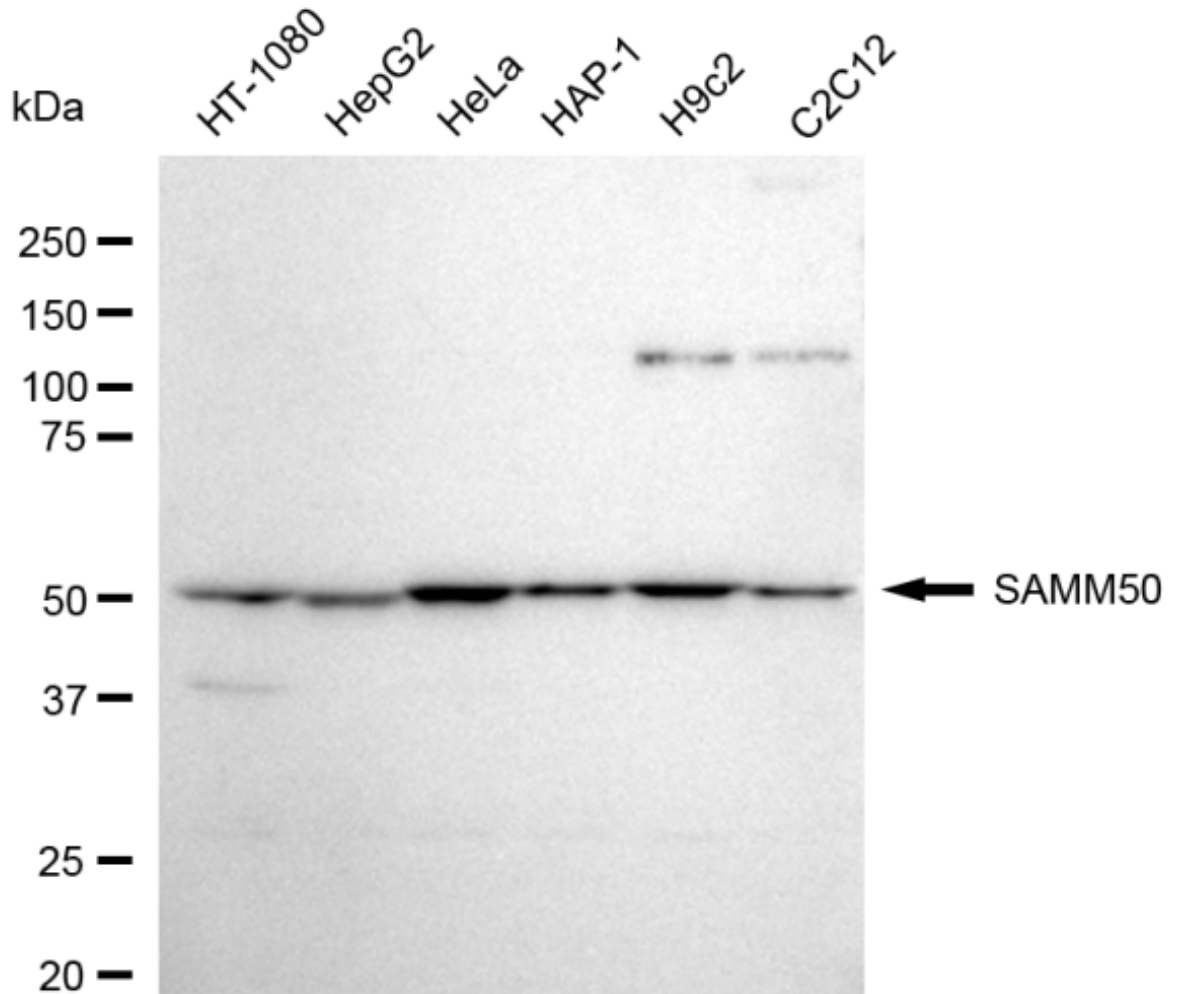
For general and specific antibody protocols please visit our website. Read all instructions before using this product.



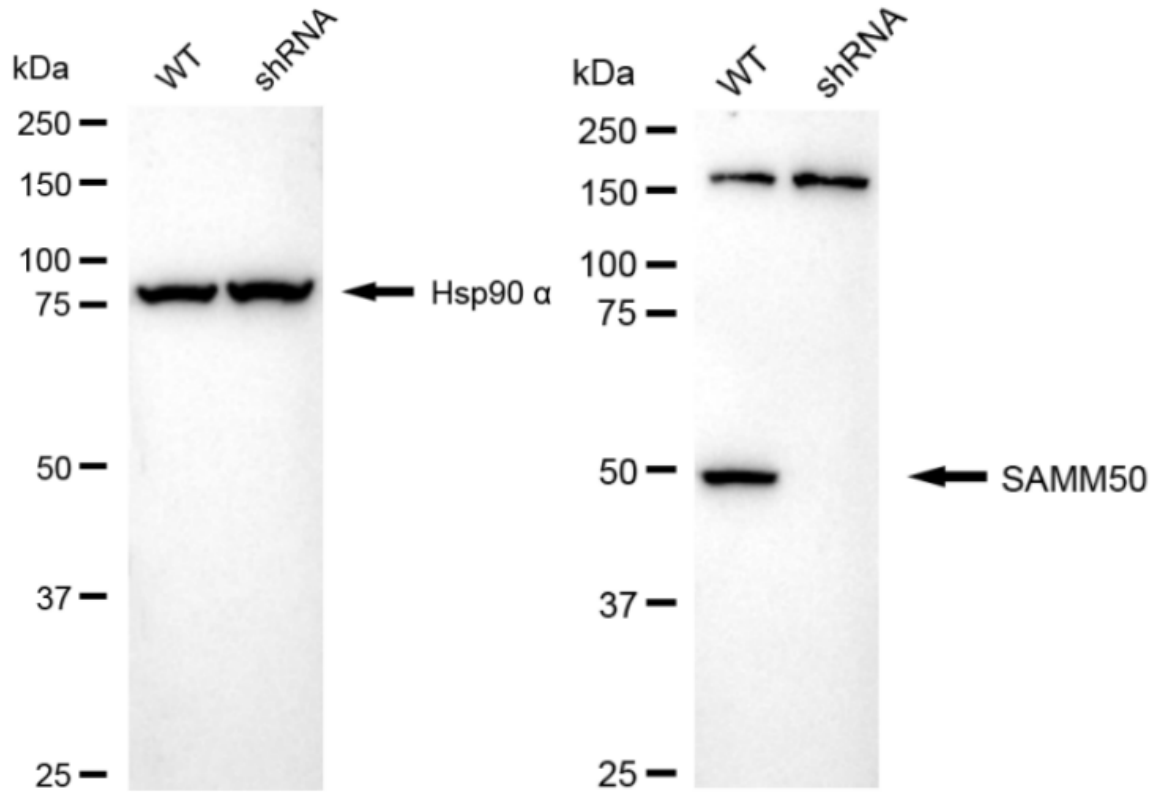
Flow cytometric analysis of SAMM50 expression in HeLa cells using SAMM50 antibody 1:2,000. Green, isotype control; red, SAMM50.



Immunocytochemical staining of HeLa cells with anti-SAMM50 antibody 1:1,000. Nuclei were stained blue with DAPI; SAMM50 was stained magenta with Alexa Fluor® 647. Images were taken using Leica stellaris 5. Protein abundance based on laser Intensity and smart gain:Medium . Scale bar: 20 μ m.



Western blotting analysis using anti-SAMM50 antibody 1:5,000 and HRP-conjugated goat anti-rabbit secondary antibody 1:20,000 respectively. Image was developed using FeQ™ ECL Substrate Kit .



Western blotting analysis using anti-SAMM50 antibody 1:5,000 and HRP-conjugated goat anti-rabbit secondary antibody 1:20,000 respectively. Image was developed using NaQ™ ECL Substrate Kit .