



SunLong Biotech Co.,LTD
Tel: 0086-571- 56623320 Fax:0086-571- 56623318
E-mail:sales@sunlongbiotech.com
www.sunlongbiotech.com

[KD-Validated] Anti-SAMHD1 Rabbit Monoclonal Antibody

Cat No.: KD-10800

Aliases:

SAM And HD Domain Containing Deoxynucleoside Triphosphate Triphosphohydrolase 1; MOP-5; Monocyte Protein 5; SBBI88; HDDC1; Deoxynucleoside Triphosphate Triphosphohydrolase SAMHD1; SAM Domain And HD Domain-Containing Protein 1; Dendritic Cell-Derived IFNG-Induced Protein; SAM Domain And HD Domain 1; HSAMHD1; DNTPase; Mg11; AGS5; DCIP; Aicardi-Goutieres Syndrome 5; HD Domain Containing 1; EC 3.1.5.-; CHBL2; MOP5

Background:

UniProt Entry: [Q9Y3Z3](#);NCBI Gene Entry: [25939](#)

Application Information

Molecular Weight: Predicted, 72 kDa, observed, 72 kDa Clonality: Rabbit monoclonal antibody Clone ID: 24GB1010 Species Reactivity: Human Applications Used: Western Blotting (WB), Flow Cytometry (FCM), Immunocytochemistry (IC)

Immunogen

A synthesized peptide derived from human SAMHD1

Isotype

Rabbit IgG

Storage Buffer

Supplied in PBS (pH 7.4) containing 50% glycerol, and 0.02% sodium azide.

Storage

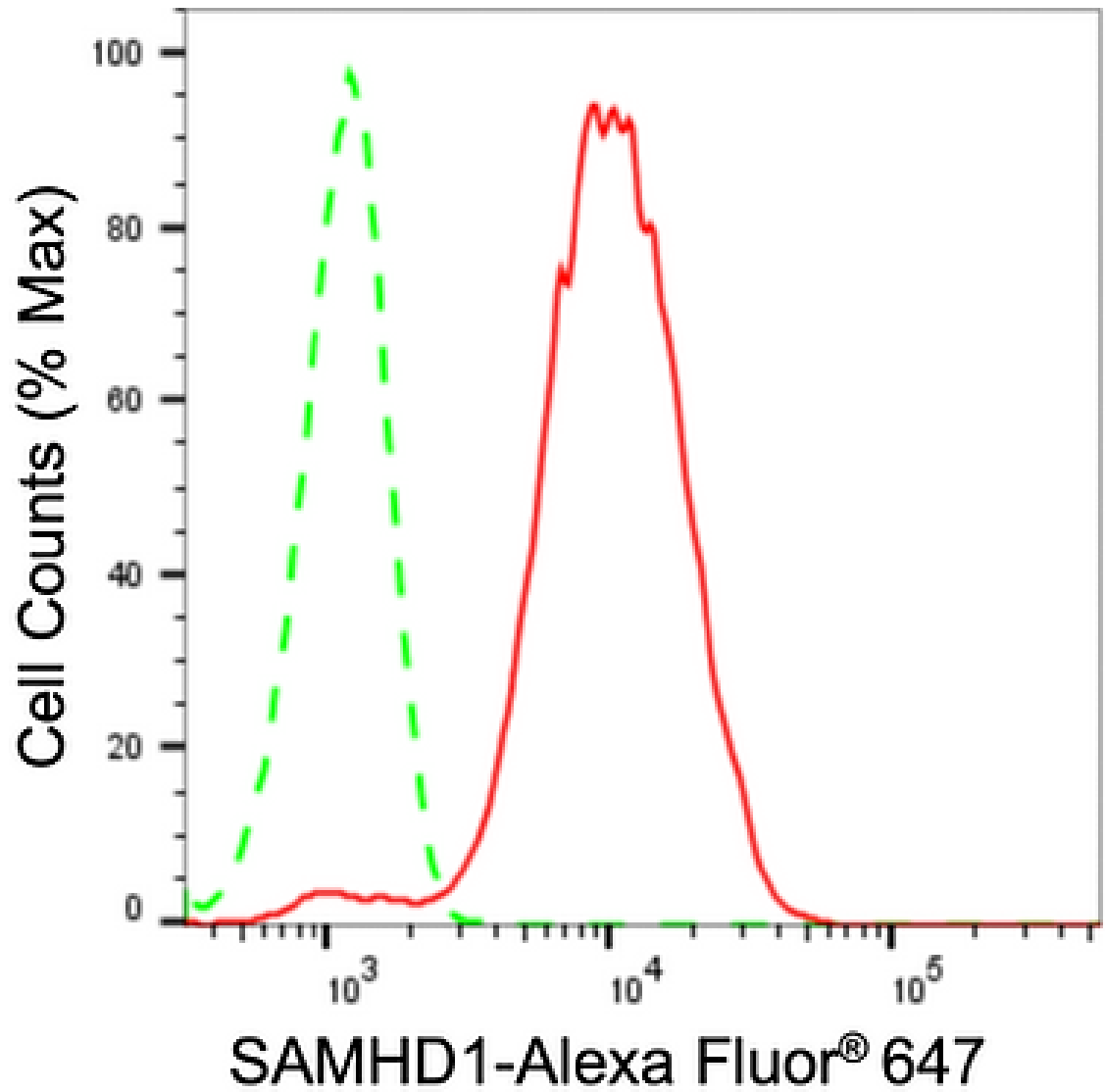
Store at -20 °C for one year.

Recommended Dilutions

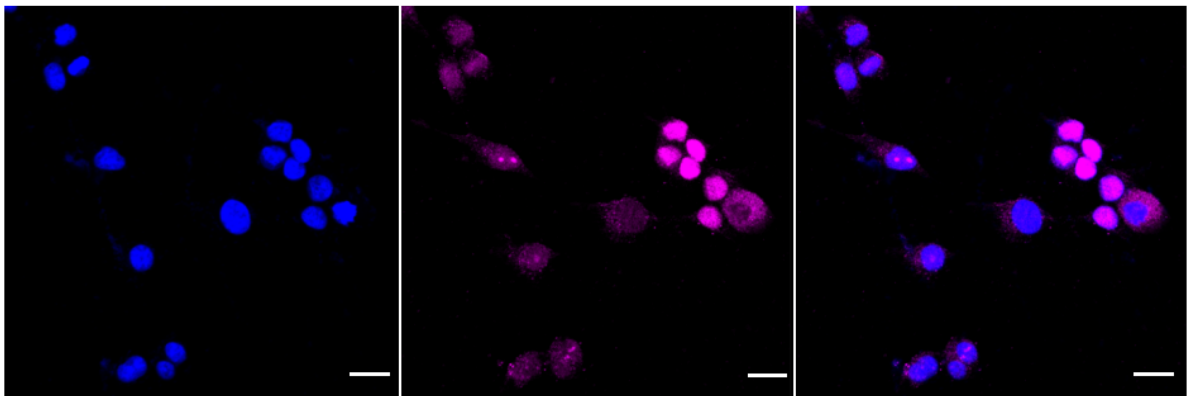
Western Blotting (WB): 1:1,000-1:5,000 Flow Cytometry (FCM): 1:2,000
Immunocytochemistry (IC): 1:1,000

Protocols

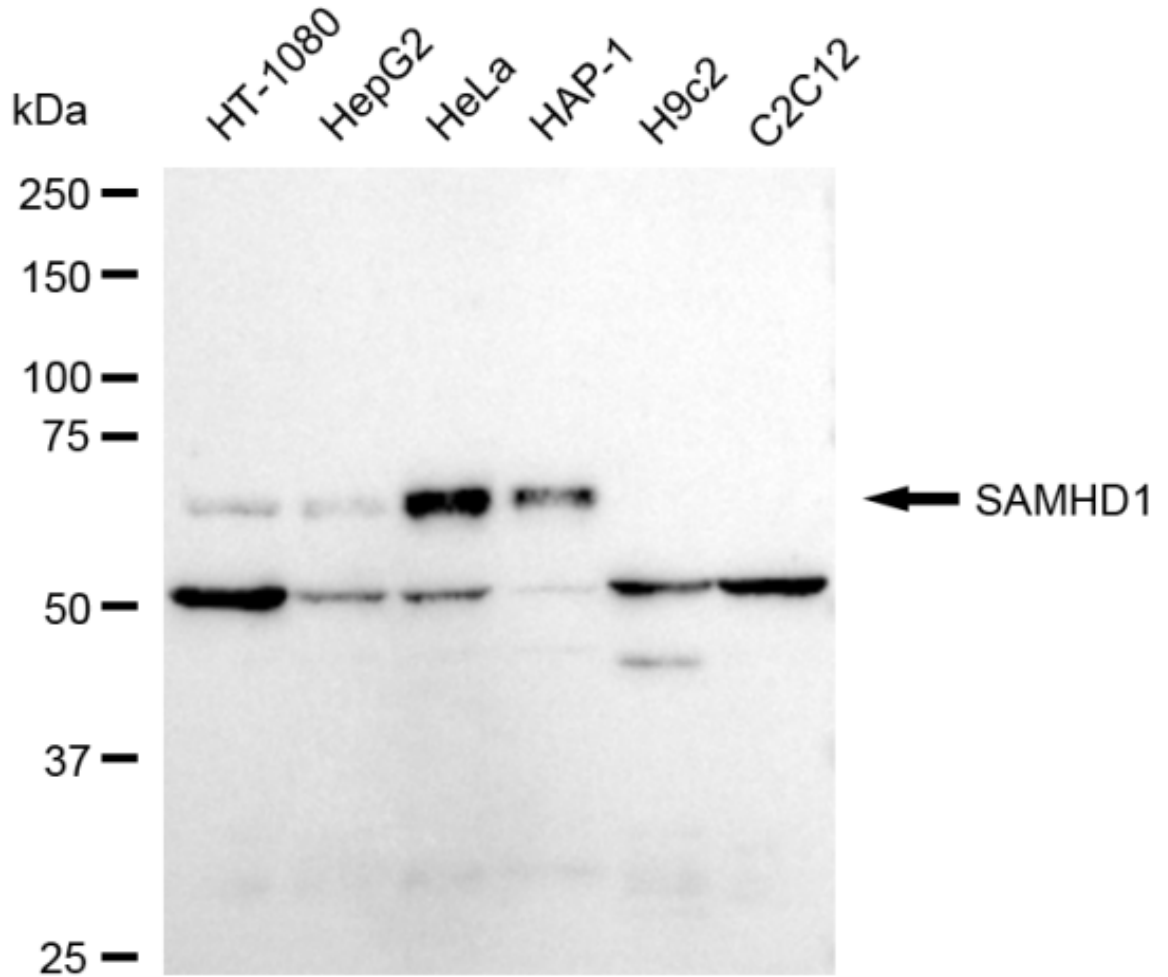
For general and specific antibody protocols please visit our website. Read all instructions before using this product.



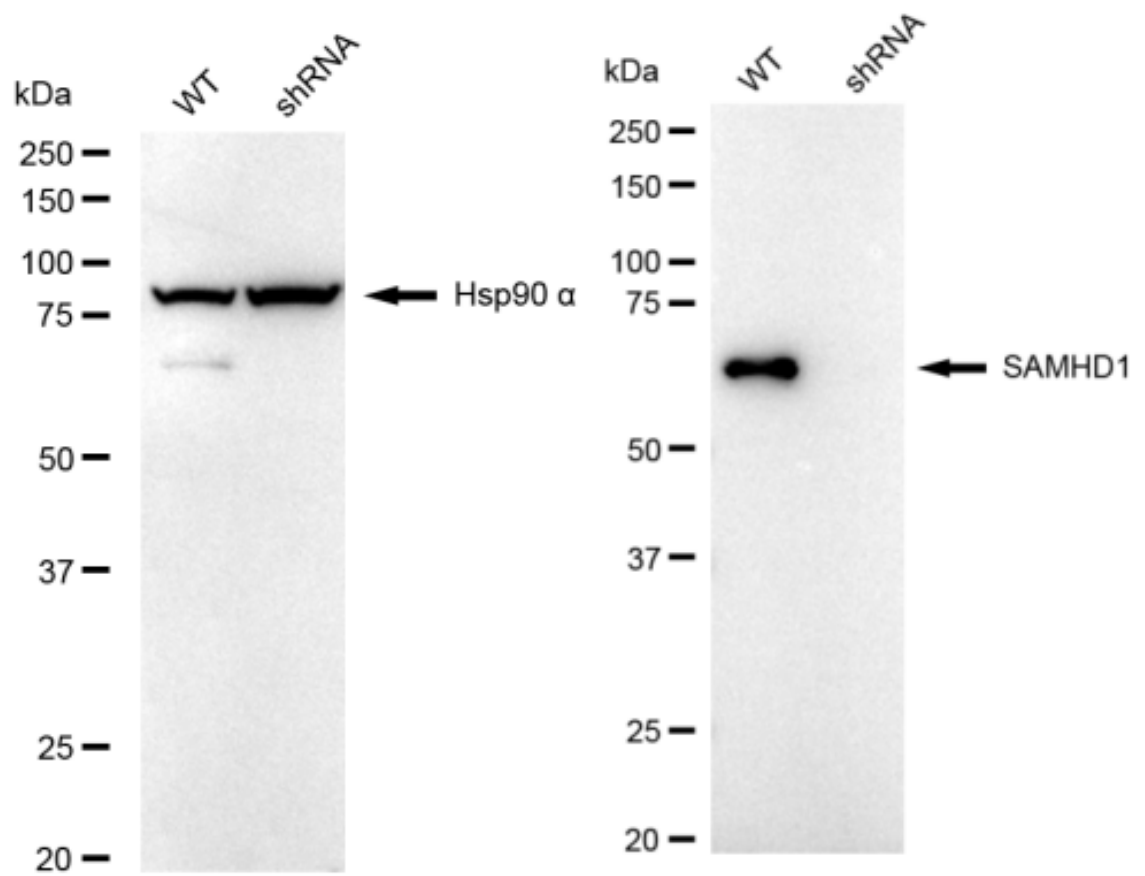
Flow cytometric analysis of SAMHD1 expression in HeLa cells using SAMHD1 antibody 1:2,000. Green, isotype control; red, SAMHD1.



Immunocytochemical staining of HeLa cells with anti-SAMHD1 antibody 1:1,000. Nuclei were stained blue with DAPI; SAMHD1 was stained magenta with Alexa Fluor® 647. Images were taken using Leica stellaris 5. Protein abundance based on laser Intensity and smart gain: High. Scale bar: 20 μ m.



Western blotting analysis using anti-SAMHD1 antibody 1:5,000 and HRP-conjugated goat anti-rabbit secondary antibody 1:20,000 respectively. Image was developed using FeQ™ ECL Substrate Kit .



Western blotting analysis using anti-SAMHD1 antibody 1:5,000 and HRP-conjugated goat anti-rabbit secondary antibody 1:20,000 respectively. Image was developed using NaQ™ ECL Substrate Kit .