



SunLong Biotech Co.,LTD
Tel: 0086-571- 56623320 Fax:0086-571- 56623318
E-mail:sales@sunlongbiotech.com
www.sunlongbiotech.com

[KD-Validated] Anti-Retinoid X receptor alpha Rabbit Monoclonal Antibody

Cat No.: KD-10799

Aliases:

RXRA; Retinoid X Receptor Alpha; NR2B1; Nuclear Receptor Subfamily 2 Group B Member 1; Retinoic Acid Receptor RXR-Alpha; RXR-Alpha; RXRalpha; Retinoid X Nuclear Receptor Alpha; Retinoid X Receptor, Alpha; RXR-ALPHA; RXRALPHA

Background:

UniProt Entry: [P19793](#);NCBI Gene Entry: [6256](#)

Application Information

Molecular Weight: Predicted, 51 kDa, observed, 51 kDa Clonality: Rabbit monoclonal antibody Clone ID: 23GB2815 Species Reactivity: Human, Mouse, Rat Applications Tested: Western Blotting (WB), Flow Cytometry (FCM), Immunocytochemistry (IC)

Immunogen

A synthesized peptide derived from human Retinoid X Receptor alpha

Isotype

Rabbit IgG

Storage Buffer

Supplied in PBS (pH 7.4) containing 50% glycerol, and 0.02% sodium azide.

Storage

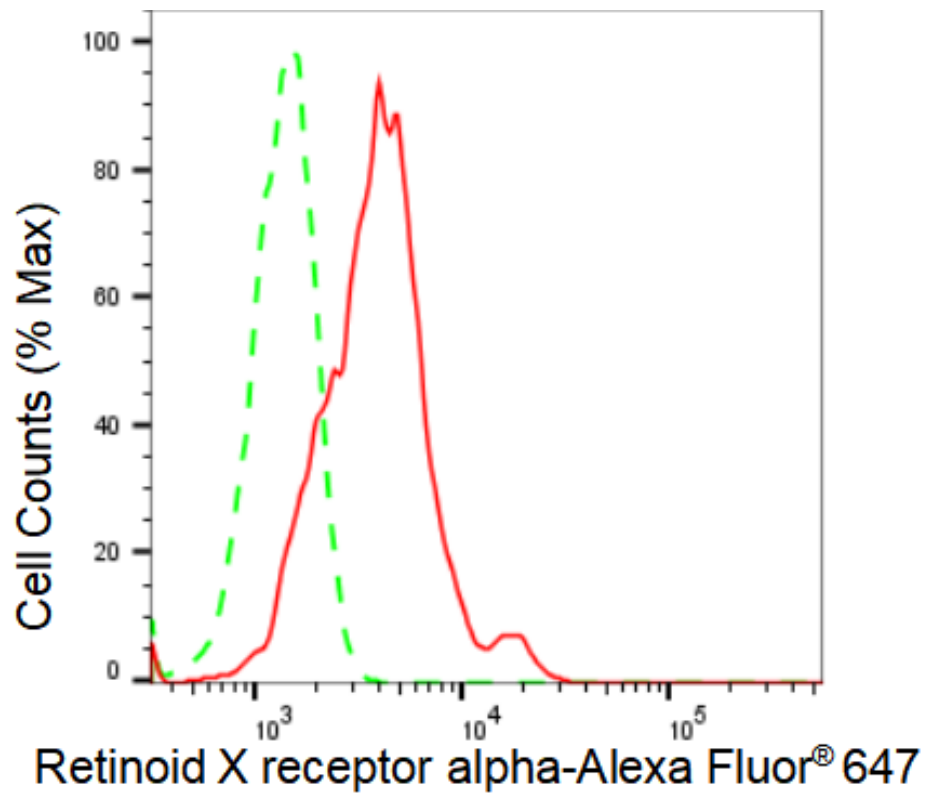
Store at -20 °C for one year.

Recommended Dilutions

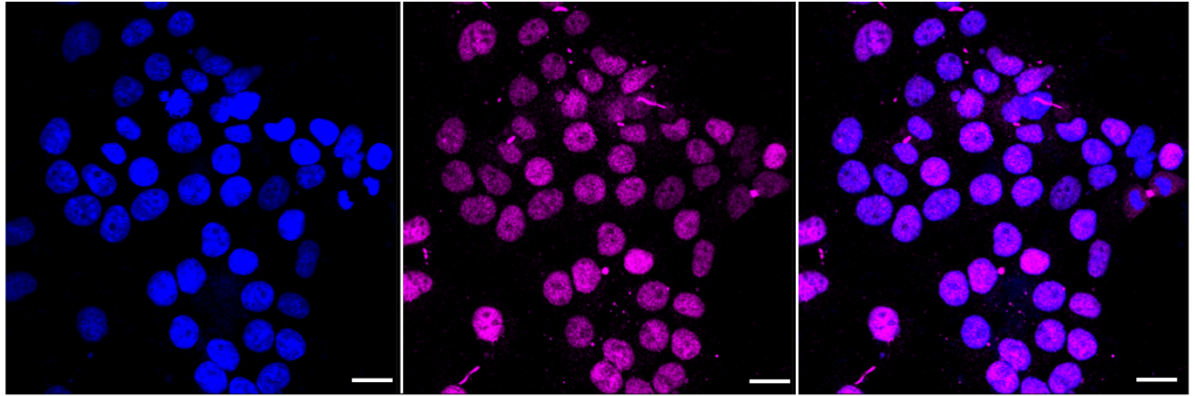
Western Blotting (WB): 1:1,000-1:5,000 Flow Cytometry (FCM): 1:2,000
Immunocytochemistry (IC): 1:1,000

Protocols

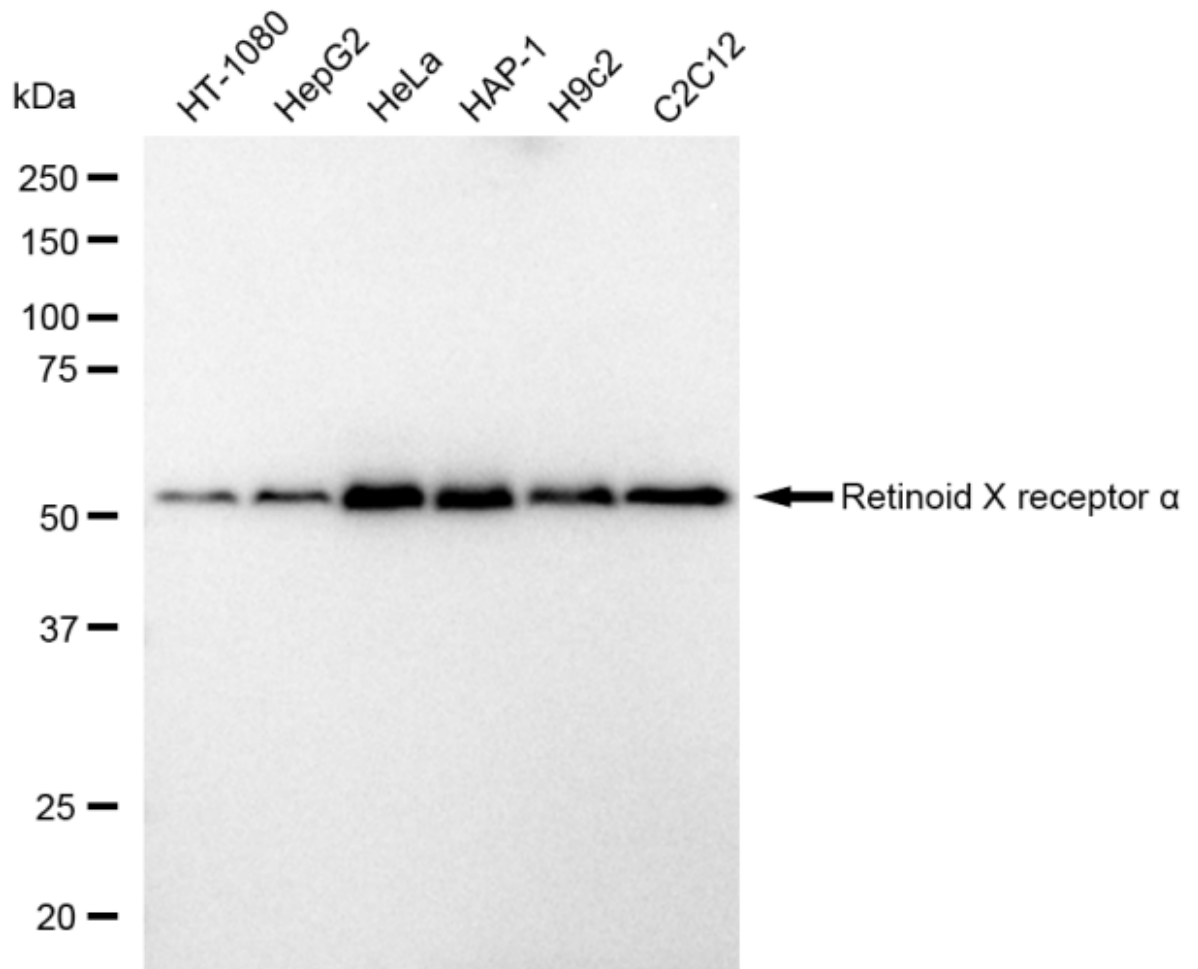
For general and specific antibody protocols please visit our website. Read all instructions before using this product.



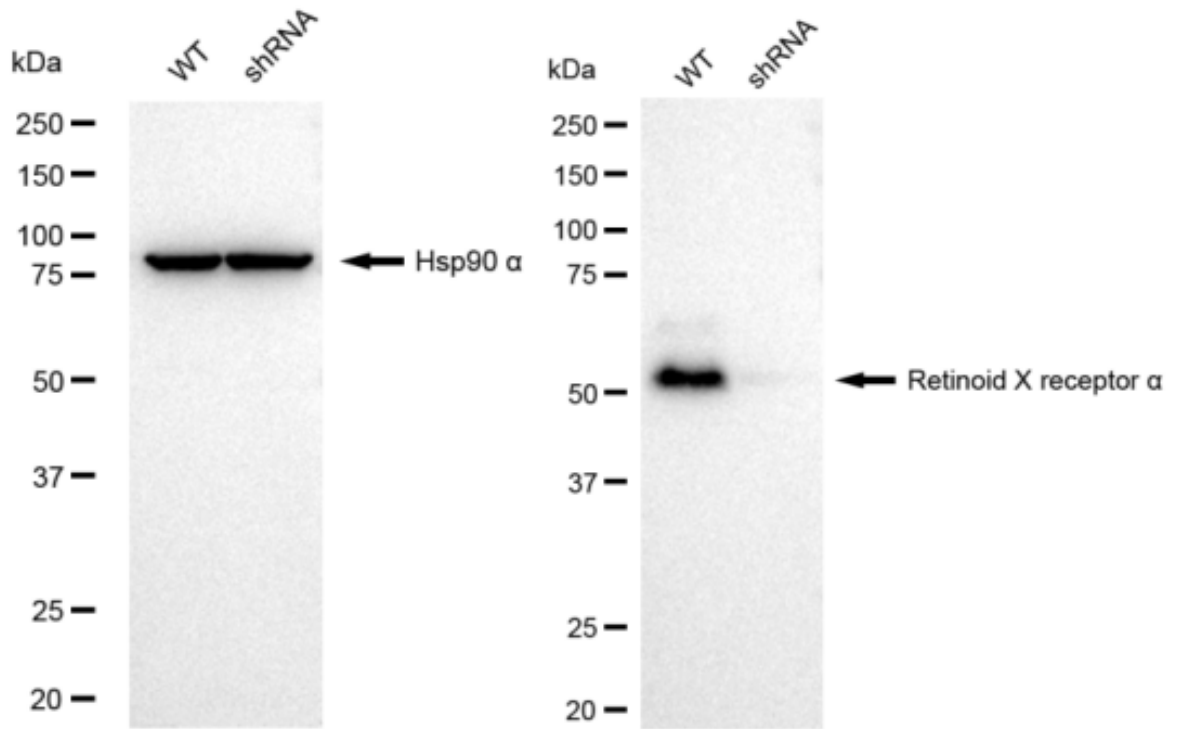
Flow cytometric analysis of Retinoid X receptor alpha expression in HeLa cells using Retinoid X receptor alpha antibody 1:2,000. Green, isotype control; red, Retinoid X receptor alpha.



Immunocytochemical staining of HeLa cells with Retinoid X receptor alpha antibody 1:1,000. Nuclei were stained blue with DAPI; Retinoid X receptor alpha was stained magenta with Alexa Fluor® 647. Images were taken using Leica stellaris 5. Protein abundance based on laser Intensity and smart gain: Medium. Scale bar: 20 μ m.



Western blotting analysis using anti-Retinoid X receptor alpha antibody 1:5,000 and HRP-conjugated goat anti-rabbit secondary antibody 1:20,000 respectively. Image was developed using FeQ™ ECL Substrate Kit .



Western blotting analysis using anti-Retinoid X receptor alpha antibody 1:5,000 and HRP-conjugated goat anti-rabbit secondary antibody 1:20,000 respectively. Image was developed using FeQ™ ECL Substrate Kit .