



SunLong Biotech Co.,LTD  
Tel: 0086-571- 56623320 Fax:0086-571- 56623318  
E-mail:sales@sunlongbiotech.com  
www.sunlongbiotech.com

## **[KD-Validated] Anti-RUNX1/RUNX2/RUNX3 Rabbit Monoclonal Antibody**

Cat No.: KD-10798

### **Aliases:**

RUNX1; RUNX Family Transcription Factor 1; Runt-Related Transcription Factor 1; AMLCR1; CBFA2; AML1; Polyomavirus Enhancer-Binding Protein 2 Alpha B Subunit; SL3/AKV Core-Binding Factor Alpha B Subunit; SL3-3 Enhancer Factor 1 Alpha B Subunit; Runt Related Transcription Factor 1; Acute Myeloid Leukemia 1 Protein; Oncogene AML-1; PEBP2-Alpha B; PEA2-Alpha B; PEBP2A2; Core-Binding Factor, Runt Domain, Alpha Subunit; Core-Binding Factor Subunit Alpha-2; AML1-EVI-1 Fusion Protein; Acute Myeloid Leukemia 1; AML1-ETO Fusion Protein; AML1-ETO Fusion; Aml1 Oncogene; Mutant RUNX1; CBF-Alpha-2; AML1-EVI-1; PEBP2alpha; CBF2alpha; PEBP2aB; EVI-1

### **Background:**

UniProt Entry: [Q01196/Q13761/Q13950](#);NCBI Gene Entry: [861/864/860](#)

### **Application Information**

Molecular Weight: Predicted, 49 kDa, observed, 51 kDa Clonality: Rabbit monoclonal antibody Clone ID: 23GB4800 Species Reactivity: Human, Mouse, Rat Applications Tested: Western Blotting (WB), Flow Cytometry (FCM)

### **Immunogen**

A synthesized peptide derived from human RUNX1/RUNX2/RUNX3

### **Isotype**

Rabbit IgG

**Storage Buffer**

Supplied in PBS (pH 7.4) containing 50% glycerol, and 0.02% sodium azide.

**Storage**

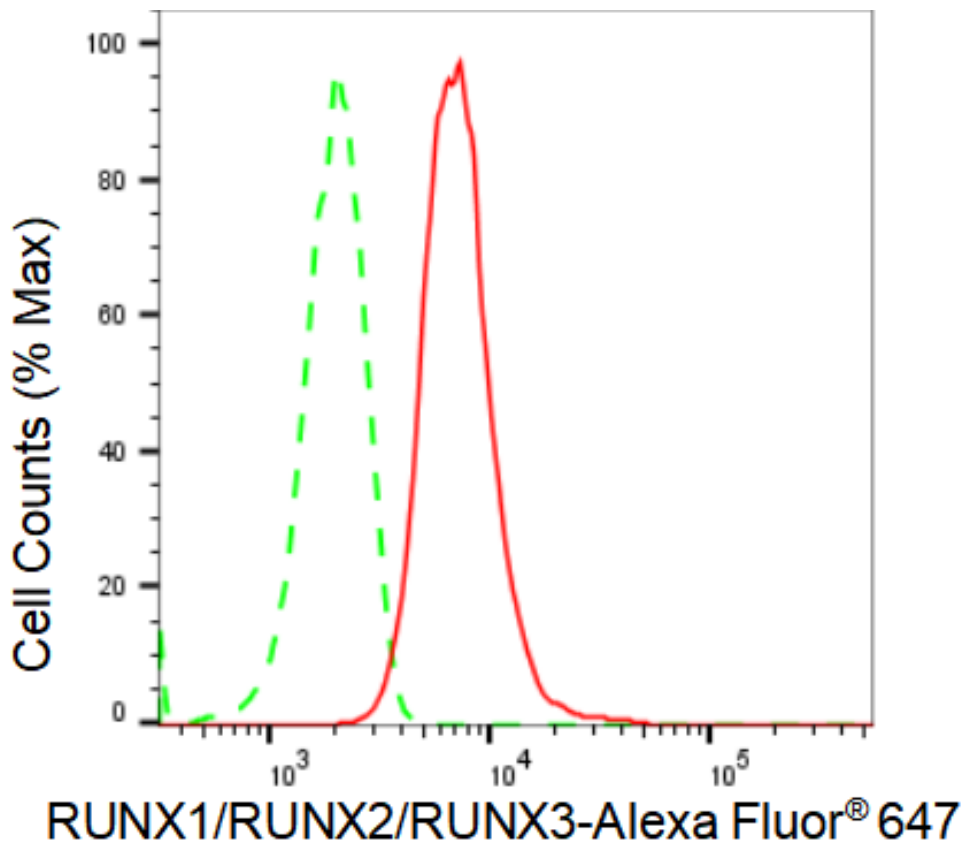
Store at -20 °C for one year.

**Recommended Dilutions**

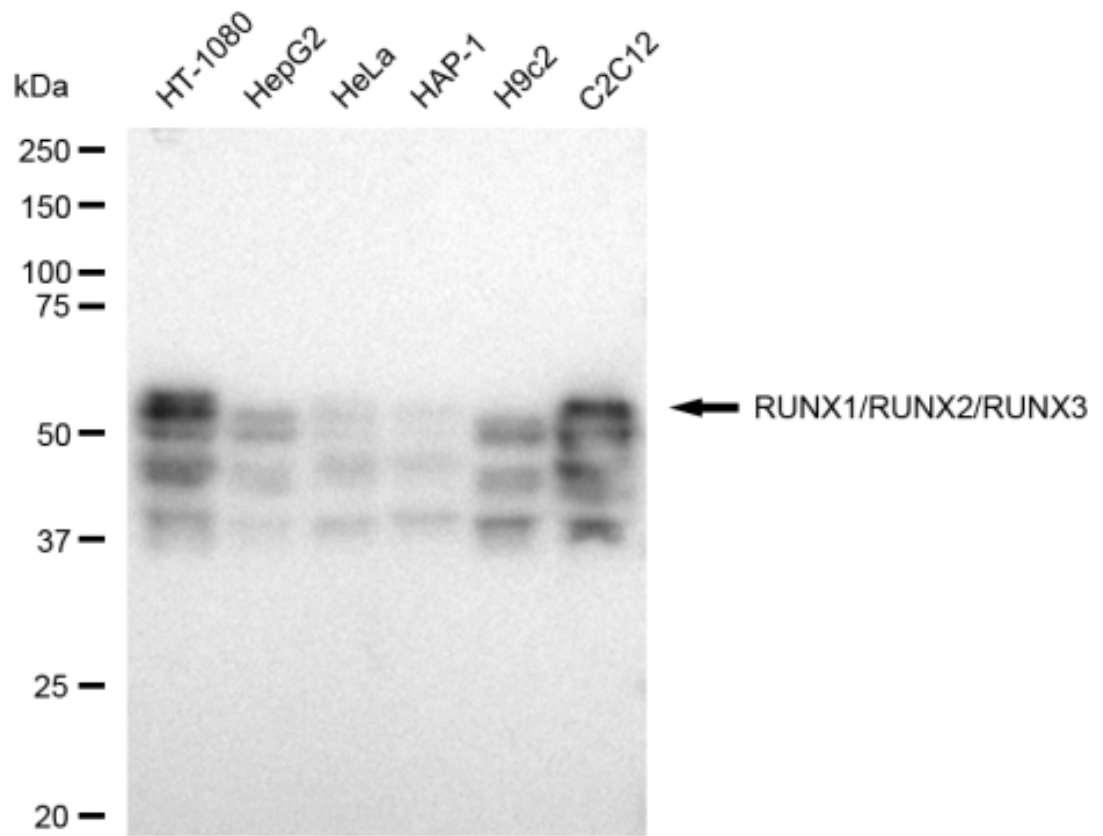
Western Blotting (WB): 1:1,000-1:5,000 Flow Cytometry (FCM): 1:2,000

**Protocols**

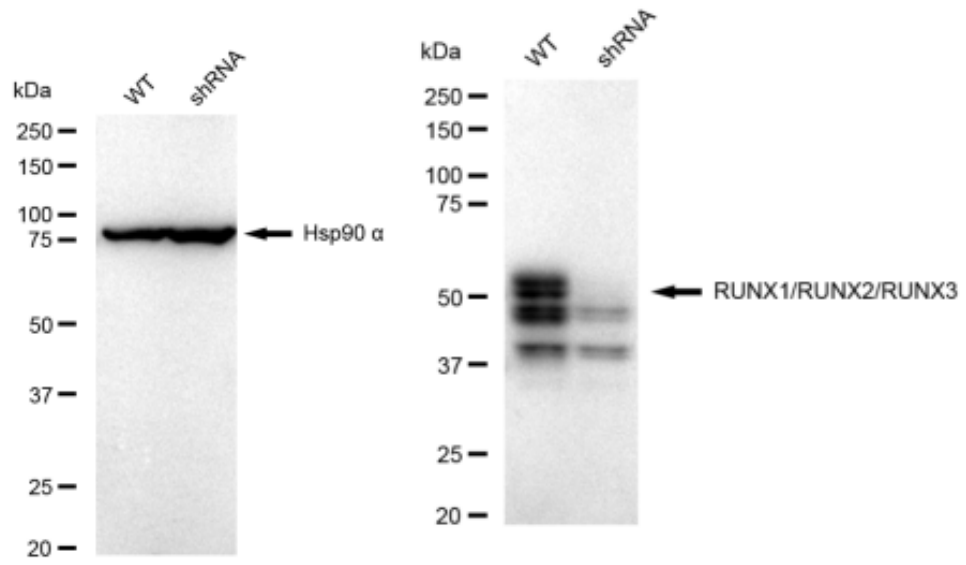
For general and specific antibody protocols please visit our website. Read all instructions before using this product.



Flow cytometric analysis of RUNX1/RUNX2/RUNX3 expression in HT-1080 cells using RUNX1/RUNX2/RUNX3 antibody 1:2,000. Green, isotype control; red, RUNX1/RUNX2/RUNX3.



Western blotting analysis using anti-RUNX1/RUNX2/RUNX3 antibody 1:5,000 and HRP-conjugated goat anti-rabbit secondary antibody 1:20,000 respectively. Image was developed using FeQ™ ECL Substrate Kit .



Western blotting analysis using anti-RUNX1/RUNX2/RUNX3 antibody 1:5,000 and HRP-conjugated goat anti-rabbit secondary antibody 1:20,000 respectively. Image was developed using FeQ™ ECL Substrate Kit .