



SunLong Biotech Co.,LTD
Tel: 0086-571- 56623320 Fax:0086-571- 56623318
E-mail:sales@sunlongbiotech.com
www.sunlongbiotech.com

[KD-Validated] Anti-Ribosomal Protein S6 Kinase B2 Rabbit Monoclonal Antibody

Cat No.: KD-10795

Aliases:

Ribosomal Protein S6 Kinase B2; STK14B; P70-BETA; P70S6Kb; S6Kbeta; S6KB; KLS; 70 KDa Ribosomal Protein S6 Kinase 2; Serine/Threonine-Protein Kinase 14B; Ribosomal Protein S6 Kinase Beta-2; P70 Ribosomal S6 Kinase Beta; S6 Kinase-Related Kinase; P70 S6 Kinase Beta; P70 S6K-Beta; EC 2.7.11.1; S6K-Beta-2; P70-S6K 2; S6K-Beta; P70 S6KB; P70S6K2; S6K2; SRK; Ribosomal Protein S6 Kinase, 70kDa, Polypeptide 2; Ribosomal Protein S6 Kinase, 70kD, Polypeptide 2; Serine/Threonine-Protein Kinase 14 Beta; P70(S6K)-Beta; P70-Beta-1; P70-Beta-2; S6K-Beta2; EC 2.7.11; P70-Beta; S6KI(2); S6K β

Background:

UniProt Entry: [Q9UBS0](#);NCBI Gene Entry: [6199](#)

Application Information

Molecular Weight: Predicted, 53 kDa, observed, 53 kDa Clonality: Rabbit monoclonal antibody Clone ID: 24GB1235 Species Reactivity: Human, Mouse, Rat Applications Tested: Western Blotting (WB), Flow Cytometry (FCM), Immunocytochemistry (IC)

Immunogen

A synthesized peptide derived from human P70 S6 Kinase beta

Isotype

Rabbit IgG

Storage Buffer

Supplied in PBS (pH 7.4) containing 50% glycerol, and 0.02% sodium azide.

Storage

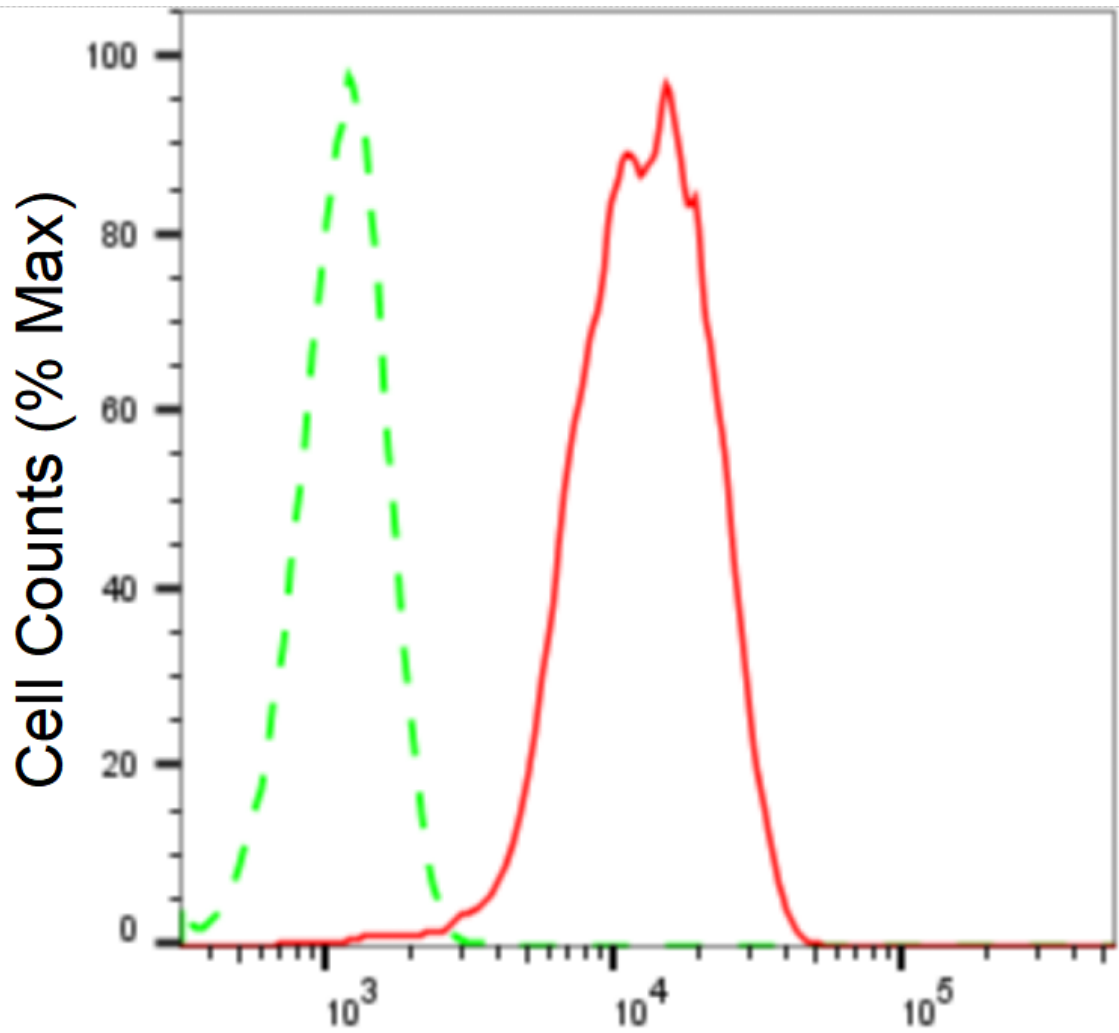
Store at -20 °C for one year.

Recommended Dilutions

Western Blotting (WB): 1:1,000-1:5,000 Flow Cytometry (FCM): 1:2,000
Immunocytochemistry (IC): 1:1,000

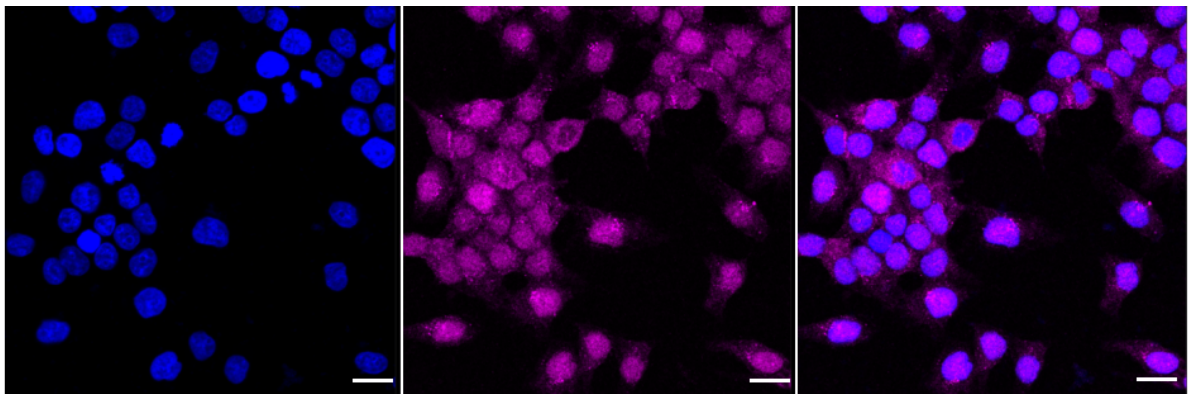
Protocols

For general and specific antibody protocols please visit our website. Read all instructions before using this product.

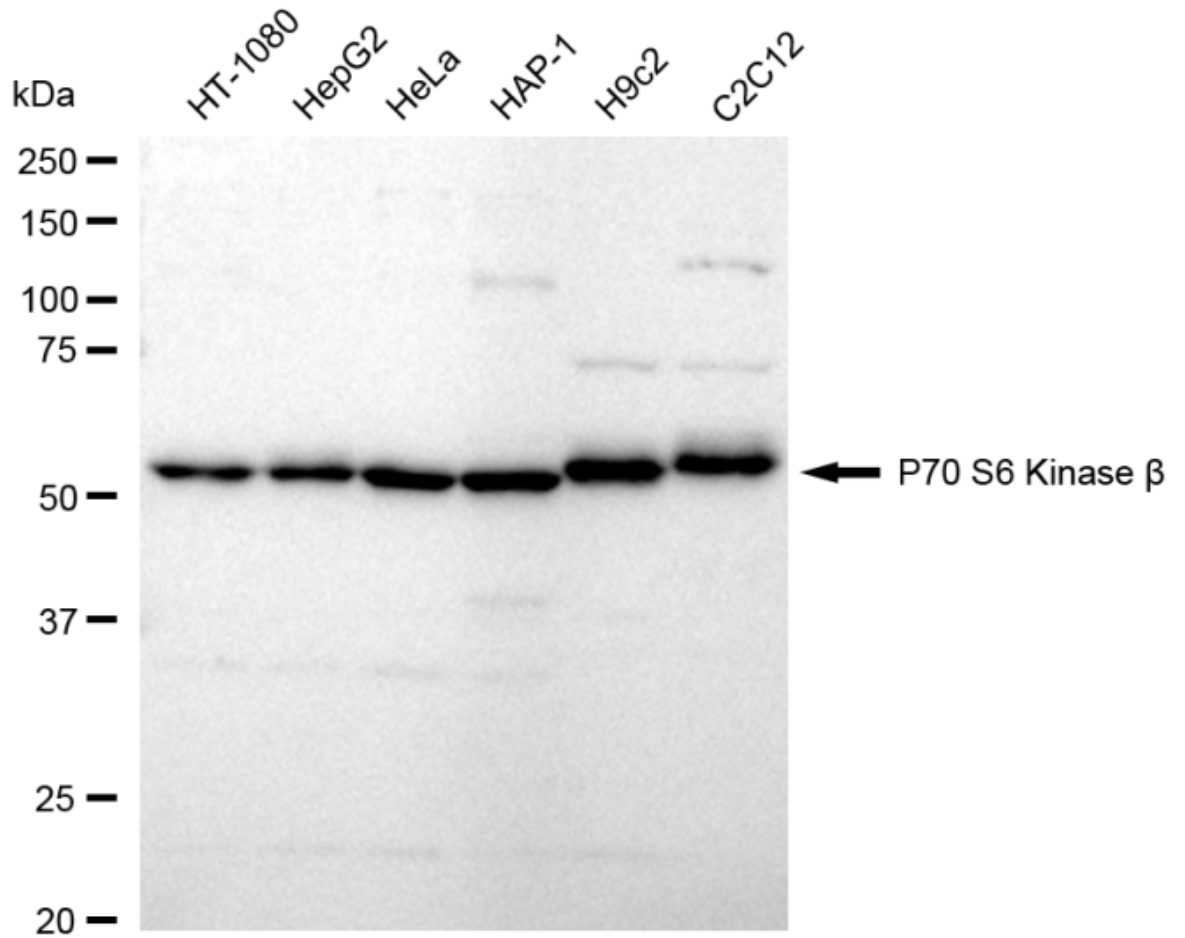


P70 S6 Kinase beta-Alexa Fluor[®] 647

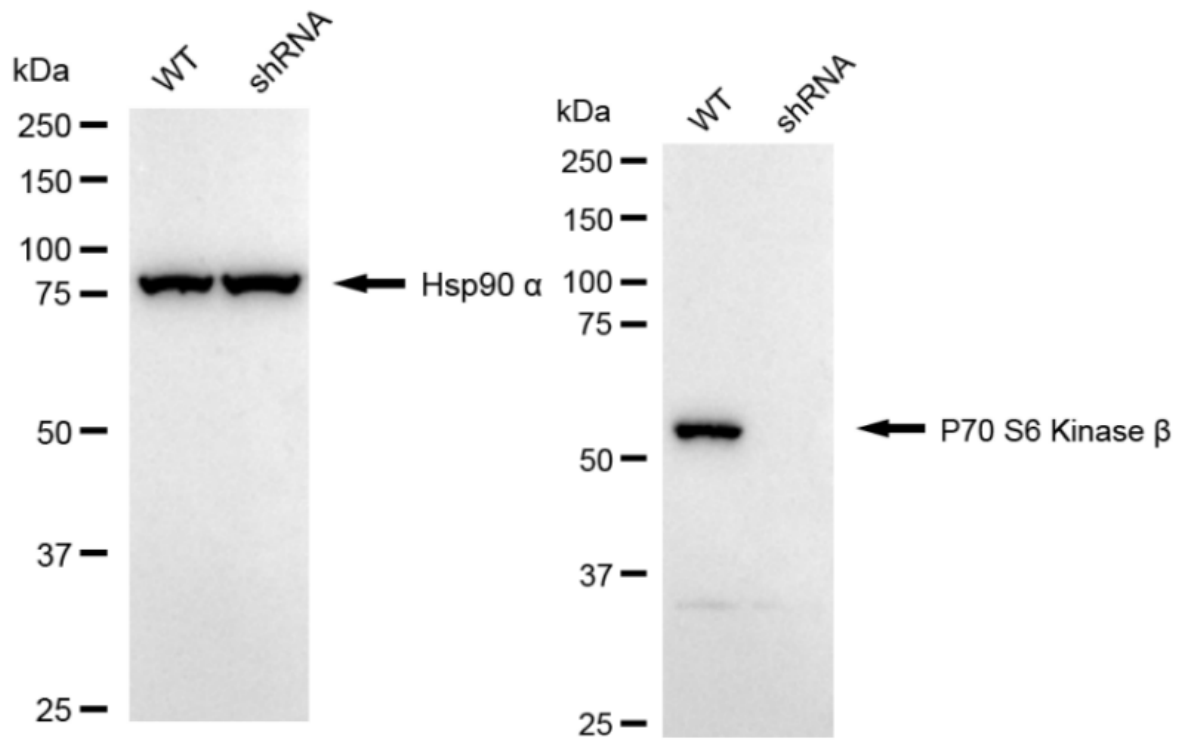
Flow cytometric analysis of P70 S6 Kinase beta expression in HeLa cells using P70 S6 Kinase beta antibody 1:2,000. Green, isotype control; red, P70 S6 Kinase beta.



Immunocytochemical staining of HeLa cells with anti-P70 S6 Kinase beta antibody 1:1,000. Nuclei were stained blue with DAPI; P70 S6 Kinase beta was stained magenta with Alexa Fluor® 647. Images were taken using Leica stellaris 5. Protein abundance based on laser Intensity and smart gain: Medium. Scale bar: 20 μ m.



Western blotting analysis using anti-P70 S6 Kinase beta antibody 1:5,000 and HRP-conjugated goat anti-rabbit secondary antibody 1:20,000 respectively. Image was developed using FeQ™ ECL Substrate Kit .



Western blotting analysis using anti-P70 S6 Kinase beta antibody 1:5,000 and HRP-conjugated goat anti-rabbit secondary antibody 1:20,000 respectively. Image was developed using NaQ™ ECL Substrate Kit .