



SunLong Biotech Co.,LTD
Tel: 0086-571- 56623320 Fax:0086-571- 56623318
E-mail:sales@sunlongbiotech.com
www.sunlongbiotech.com

[KD-Validated] Anti-RPS6KA1 Rabbit Monoclonal Antibody

Cat No.: KD-10794

Aliases:

RPS6KA1; Ribosomal Protein S6 Kinase A1; RSK1; MAPKAPK1; HU-1; MAP Kinase-Activated Protein Kinase 1a; 90 KDa Ribosomal Protein S6 Kinase 1; Ribosomal Protein S6 Kinase Alpha-1; MAPK-Activated Protein Kinase 1a; Ribosomal S6 Kinase 1; MAPKAP Kinase 1a; EC 2.7.11.1; MAPKAPK-1a; MAPKAPK1A; P90-RSK 1; P90RSK1; P90Rsk; P90S6K; RSK-1; DJ590P13.1 (Ribosomal Protein S6 Kinase, 90kD, Polypeptide 1); Ribosomal Protein S6 Kinase, 90kDa, Polypeptide 1; Ribosomal Protein S6 Kinase, 90kD, Polypeptide 1; S6K-Alpha 1; S6K-Alpha-1; EC 2.7.11; P90RSK; RSK

Background:

UniProt Entry: [Q15418](#);NCBI Gene Entry: [6195](#)

Application Information

Molecular Weight: Predicted, 82 kDa, observed, 83 kDa Clonality: Rabbit monoclonal antibody Clone ID: 23GB2080 Species Reactivity: Human Applctanions Tsed: Western Blotting (WB), Flow Cytometry (FCM), Immunocytochemistry (IC)

Immunogen

A synthesized peptide derived from human RSK1 p90

Isotype

Rabbit IgG

Storage Buffer

Supplied in PBS (pH 7.4) containing 50% glycerol, and 0.02% sodium azide.

Storage

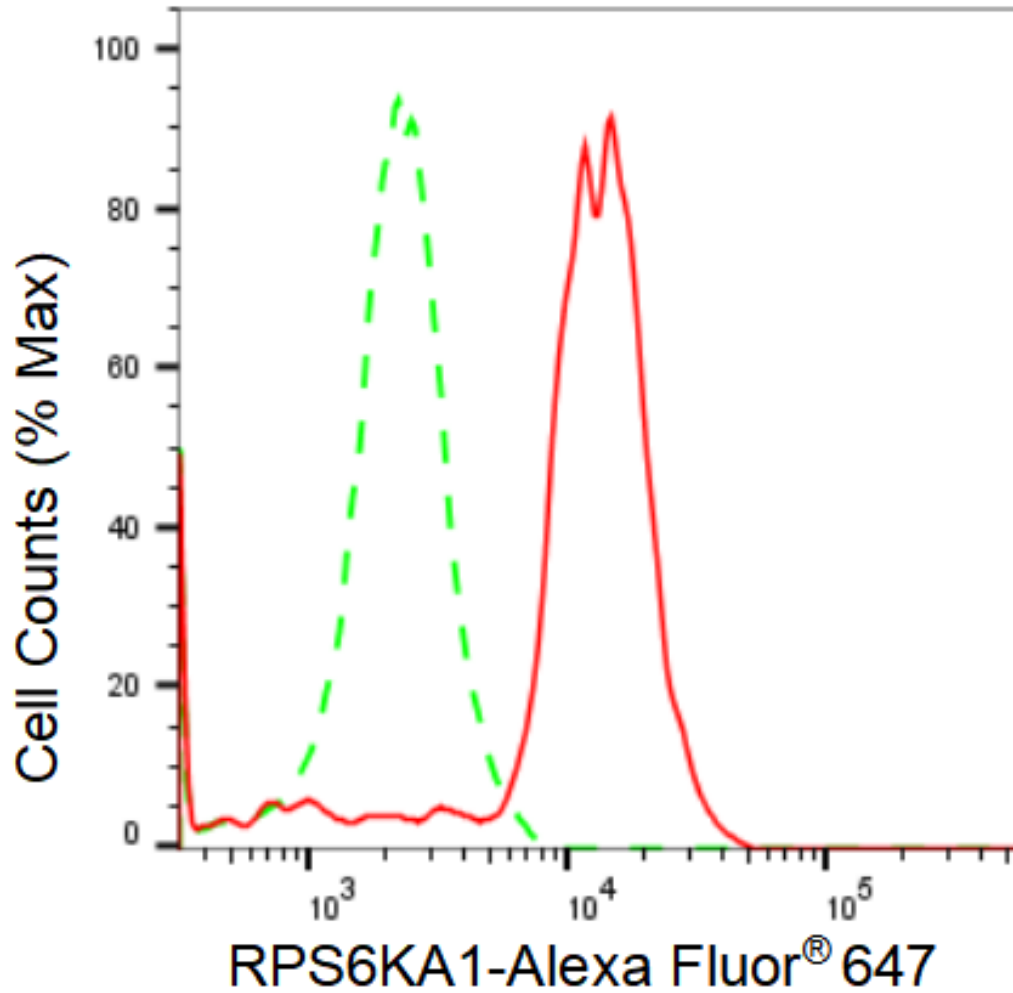
Store at -20 °C for one year.

Recommended Dilutions

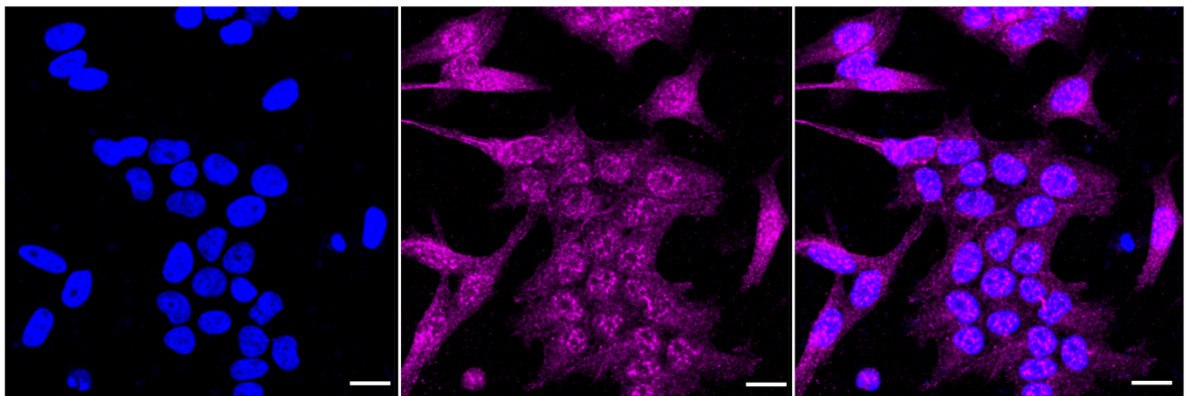
Western Blotting (WB): 1:1,000-1:5,000 Flow Cytometry (FCM): 1:2,000
Immunocytochemistry (IC): 1:1,000

Protocols

For general and specific antibody protocols please visit our website. Read all instructions before using this product.

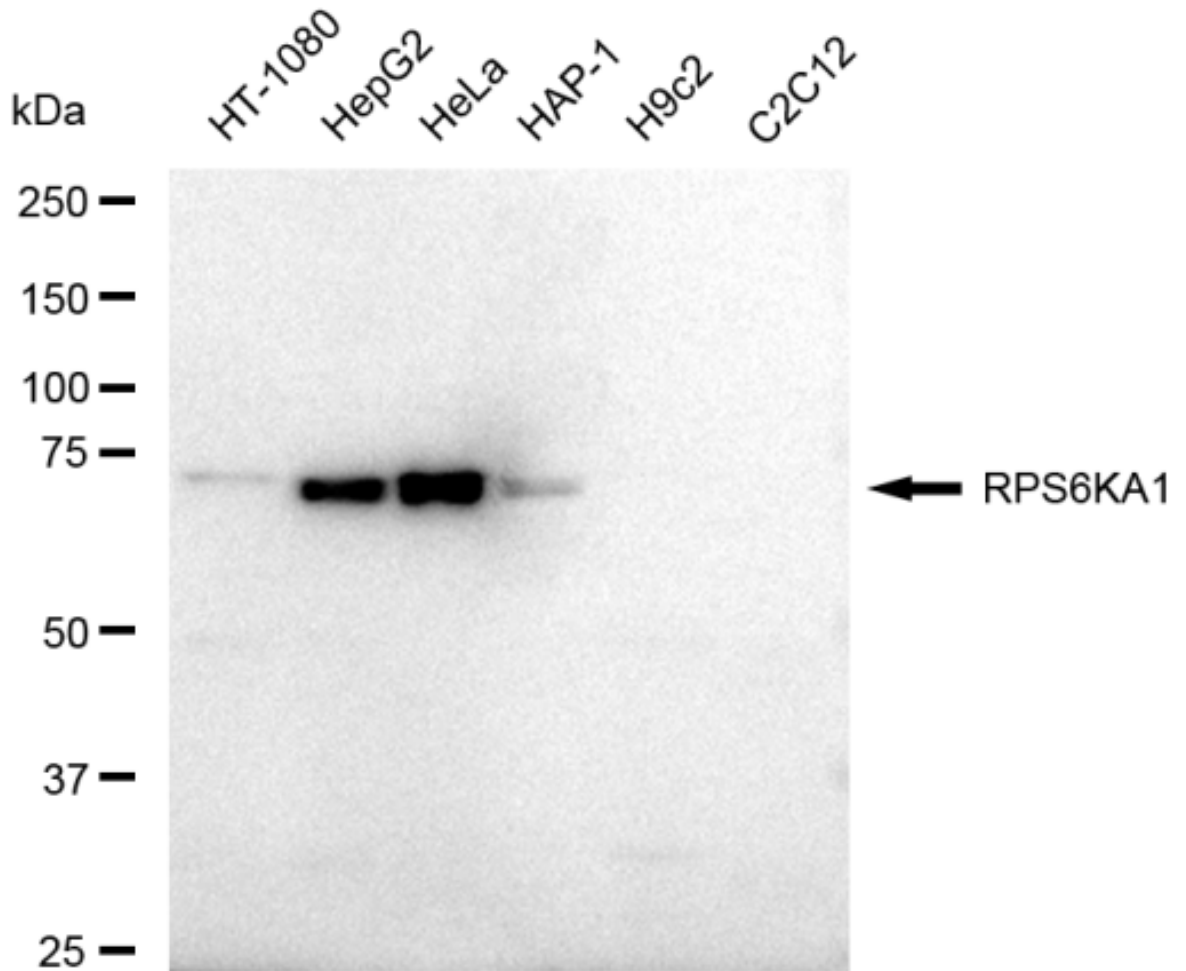


Flow cytometric analysis of RPS6KA1 expression in HeLa cells using RPS6KA1 antibody 1:2,000. Green, isotype control; red, RPS6KA1.

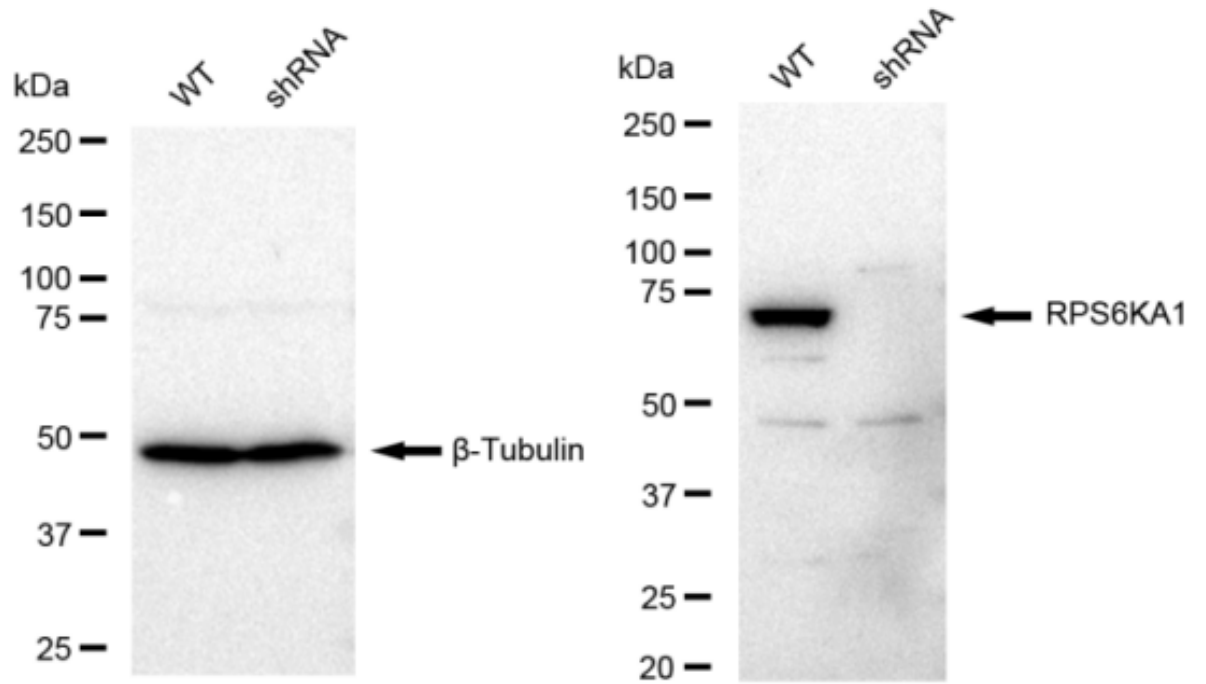


Immunocytochemical staining of HeLa cells with RPS6KA1 antibody 1:1,000. Nuclei were stained blue with DAPI; RPS6KA1 was stained magenta with Alexa Fluor® 647.

Images were taken using Leica stellaris 5. Protein abundance based on laser Intensity and smart gain: Medium. Scale bar: 20 μ m.



Western blotting analysis using anti-RPS6KA1 antibody 1:5,000 and HRP-conjugated goat anti-rabbit secondary antibody 1:20,000 respectively. Image was developed using FeQ™ ECL Substrate Kit .



Western blotting analysis using anti-RPS6KA1 antibody 1:5,000 and HRP-conjugated goat anti-rabbit secondary antibody 1:20,000 respectively. Image was developed using FeQ™ ECL Substrate Kit .