



SunLong Biotech Co.,LTD
Tel: 0086-571- 56623320 Fax:0086-571- 56623318
E-mail:sales@sunlongbiotech.com
www.sunlongbiotech.com

[KD-Validated] Anti-Phospho-RSK1(S380) Rabbit Monoclonal Antibody

Cat No.: KD-10793

Aliases:

RPS6KA1; Ribosomal Protein S6 Kinase A1; RSK1; MAPKAPK1; HU-1; MAP Kinase-Activated Protein Kinase 1a; 90 KDa Ribosomal Protein S6 Kinase 1; Ribosomal Protein S6 Kinase Alpha-1; MAPK-Activated Protein Kinase 1a; Ribosomal S6 Kinase 1; MAPKAP Kinase 1a; EC 2.7.11.1; MAPKAPK-1a; MAPKAPK1A; P90-RSK 1; P90RSK1; P90Rsk; P90S6K; RSK-1; DJ590P13.1 (Ribosomal Protein S6 Kinase, 90kD, Polypeptide 1); Ribosomal Protein S6 Kinase, 90kDa, Polypeptide 1; Ribosomal Protein S6 Kinase, 90kD, Polypeptide 1; S6K-Alpha 1; S6K-Alpha-1; EC 2.7.11; P90RSK; RSK

Background:

UniProt Entry: [Q15418](#);NCBI Gene Entry: [6195](#)

Application Information

Molecular Weight: Predicted, 82 kDa, observed, 74 kDa Clonality: Rabbit monoclonal antibody Clone ID: 23GB2425 Species Reactivity: Human, Mouse, Rat Applications Tested: Western Blotting (WB), Flow Cytometry (FCM), Immunocytochemistry (IC)

Immunogen

A synthesized peptide derived from human Phospho-RSK1(S380)

Isotype

Rabbit IgG

Storage Buffer

Supplied in PBS (pH 7.4) containing 50% glycerol, and 0.02% sodium azide.

Storage

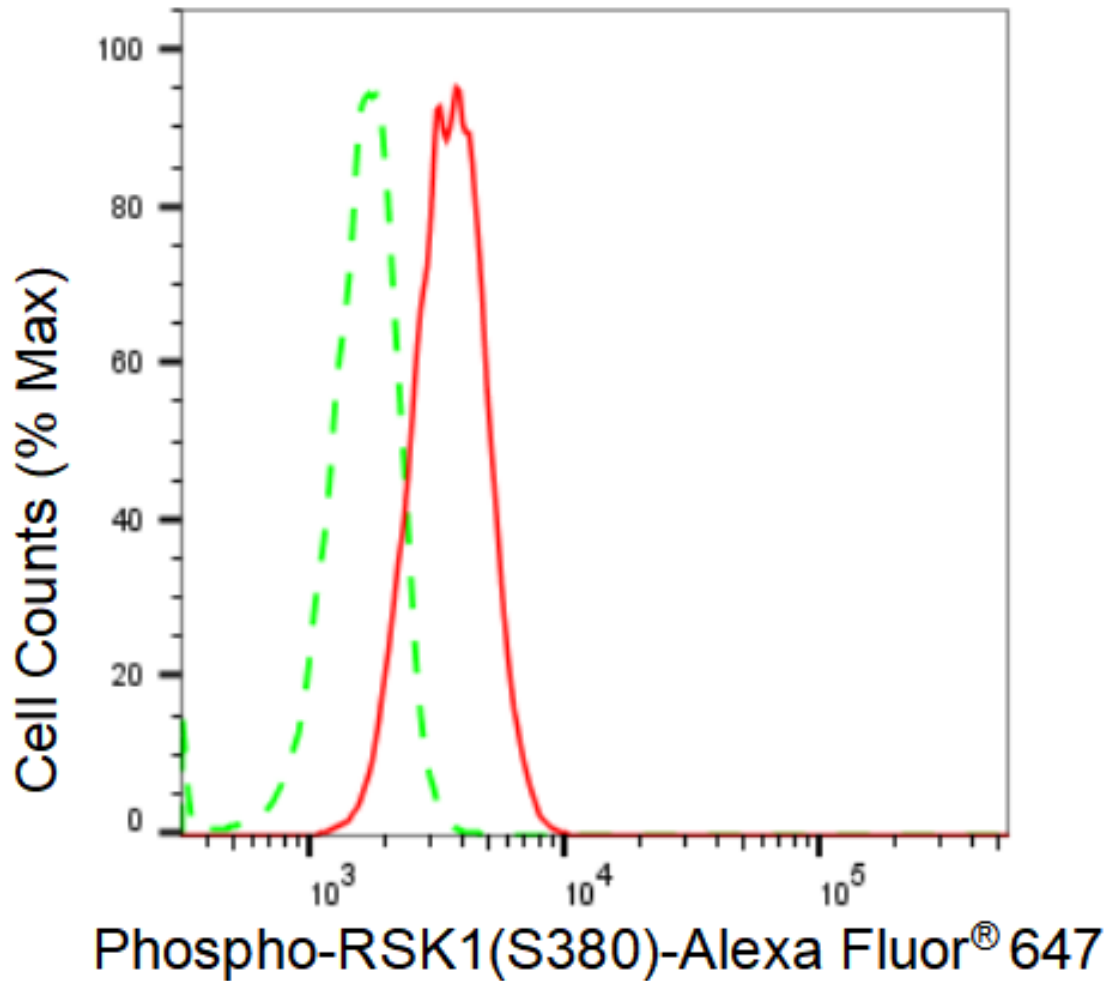
Store at -20 °C for one year.

Recommended Dilutions

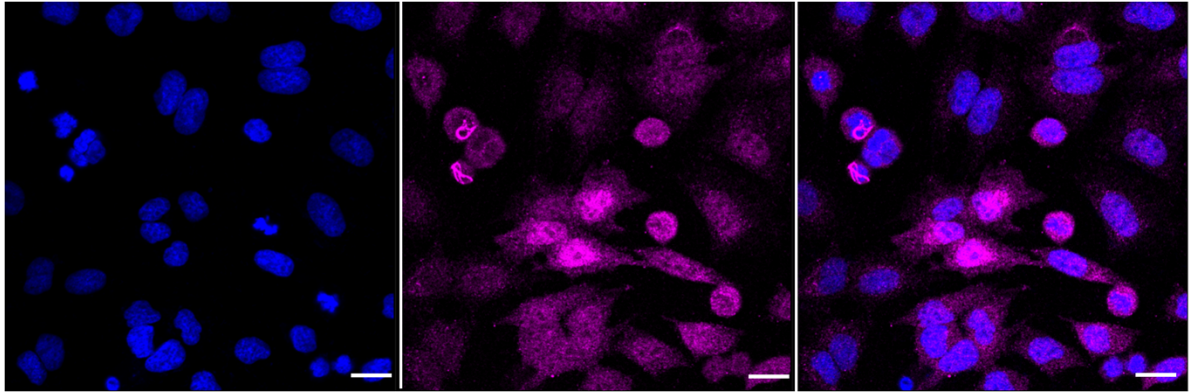
Western Blotting (WB): 1:1,000-1:5,000 Flow Cytometry (FCM): 1:2,000
Immunocytochemistry (IC): 1:1,000

Protocols

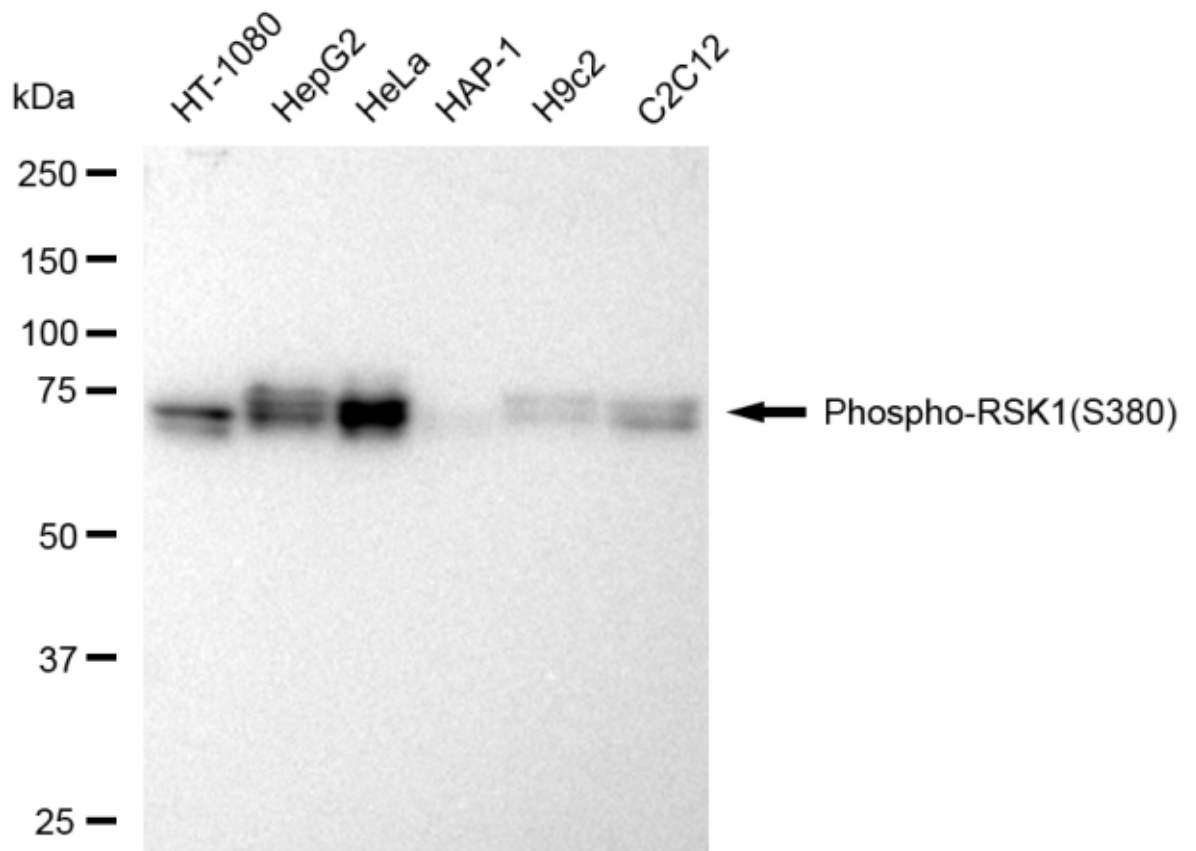
For general and specific antibody protocols please visit our website. Read all instructions before using this product.



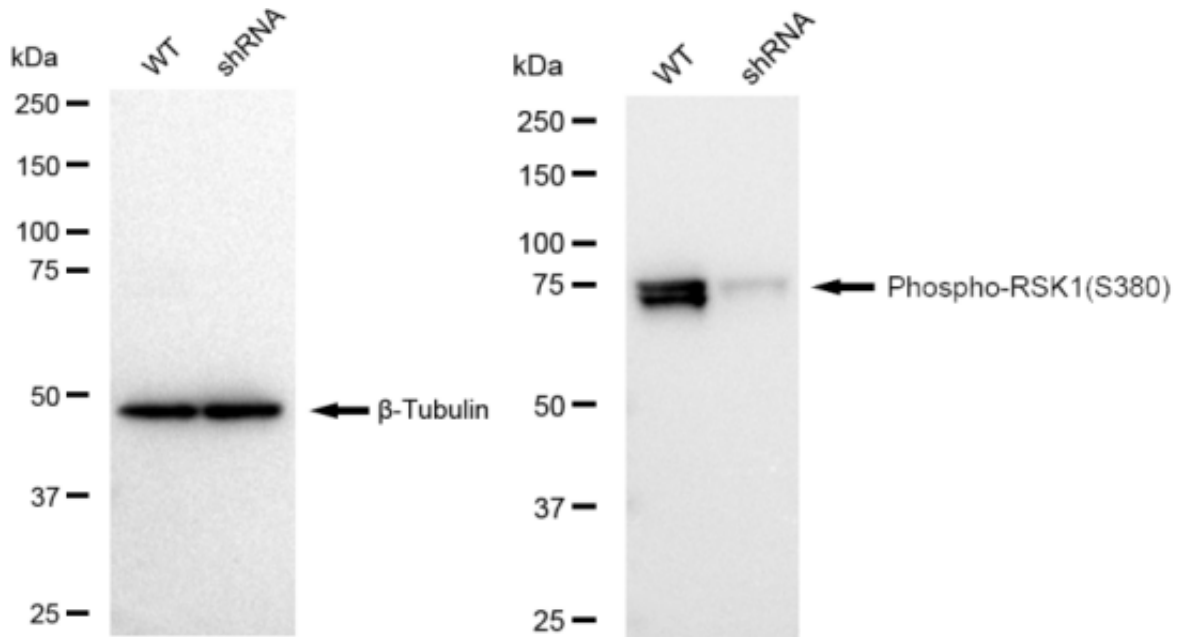
Flow cytometric analysis of Phospho-RSK1(S380) expression in C2C12 cells using Phospho-RSK1(S380) antibody 1:2,000. Green, isotype control; red, Phospho-RSK1(S380).



Immunocytochemical staining of HeLa cells with Phospho-RSK1(S380) antibody 1:1,000. Nuclei were stained blue with DAPI; Phospho-RSK1(S380) was stained magenta with Alexa Fluor® 647. Images were taken using Leica stellaris 5. Protein abundance based on laser Intensity and smart gain: Medium. Scale bar: 20 μ m.



Western blotting analysis using anti-Phospho-RSK1(S380) antibody 1:5,000 and HRP-conjugated goat anti-rabbit secondary antibody 1:20,000 respectively. Image was developed using FeQ™ ECL Substrate Kit .



Western blotting analysis using anti-Phospho-RSK1(S380) antibody 1:5,000 and HRP-conjugated goat anti-rabbit secondary antibody 1:20,000 respectively. Image was developed using FeQ™ ECL Substrate Kit .