



SunLong Biotech Co.,LTD
Tel: 0086-571- 56623320 Fax:0086-571- 56623318
E-mail:sales@sunlongbiotech.com
www.sunlongbiotech.com

[KD-Validated] Anti-Ribophorin I Rabbit Monoclonal Antibody

Cat No.: KD-10792

Aliases:

Ribophorin I; OST1; Dolichyl-Diphosphooligosaccharide--Protein Glycosyltransferase Subunit 1; Oligosaccharyltransferase Complex Subunit (Non-Catalytic); Ribophorin-1; RPN-I; Dolichyl-Diphosphooligosaccharide--Protein Glycosyltransferase 67 KDa Subunit; Dolichyl-Diphosphooligosaccharide-Protein Glycosyltransferase 67 KDa Subunit; Oligosaccharyltransferase 1 Homolog (S. Cerevisiae); Oligosaccharyltransferase 1 Homolog; EC 2.4.1.119; RBPH1

Background:

UniProt Entry: [P04843](#);NCBI Gene Entry: [6184](#)

Application Information

Molecular Weight: Predicted, 69 kDa, observed, 69 kDa Clonality: Rabbit monoclonal antibody Clone ID: 24GB1090 Species Reactivity: Human, Mouse, Rat Applications Tested: Western Blotting (WB), Flow Cytometry (FCM)

Immunogen

A synthesized peptide derived from human PRibophorin I

Isotype

Rabbit IgG

Storage Buffer

Supplied in PBS (pH 7.4) containing 50% glycerol, and 0.02% sodium azide.

Storage

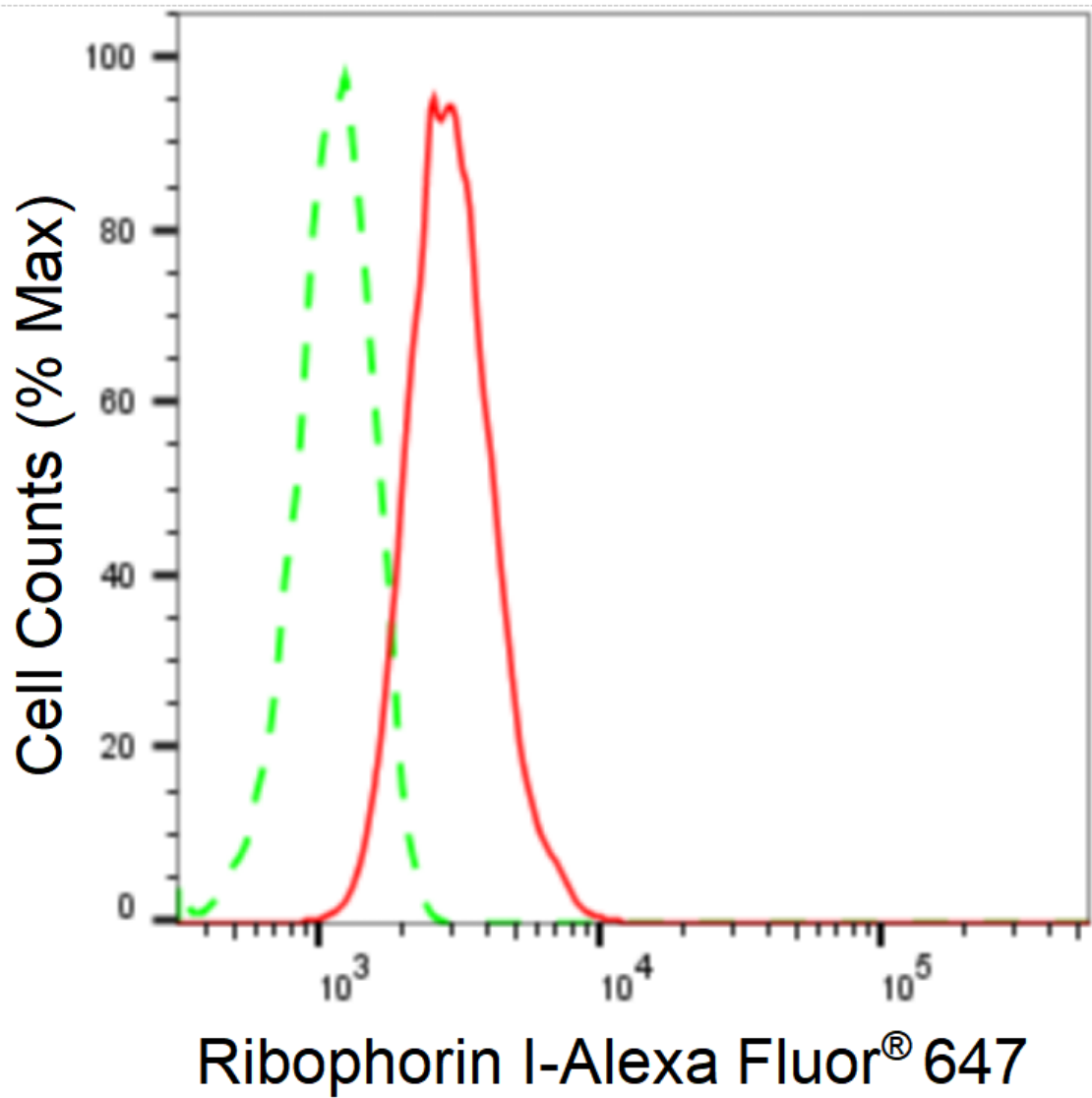
Store at -20 °C for one year.

Recommended Dilutions

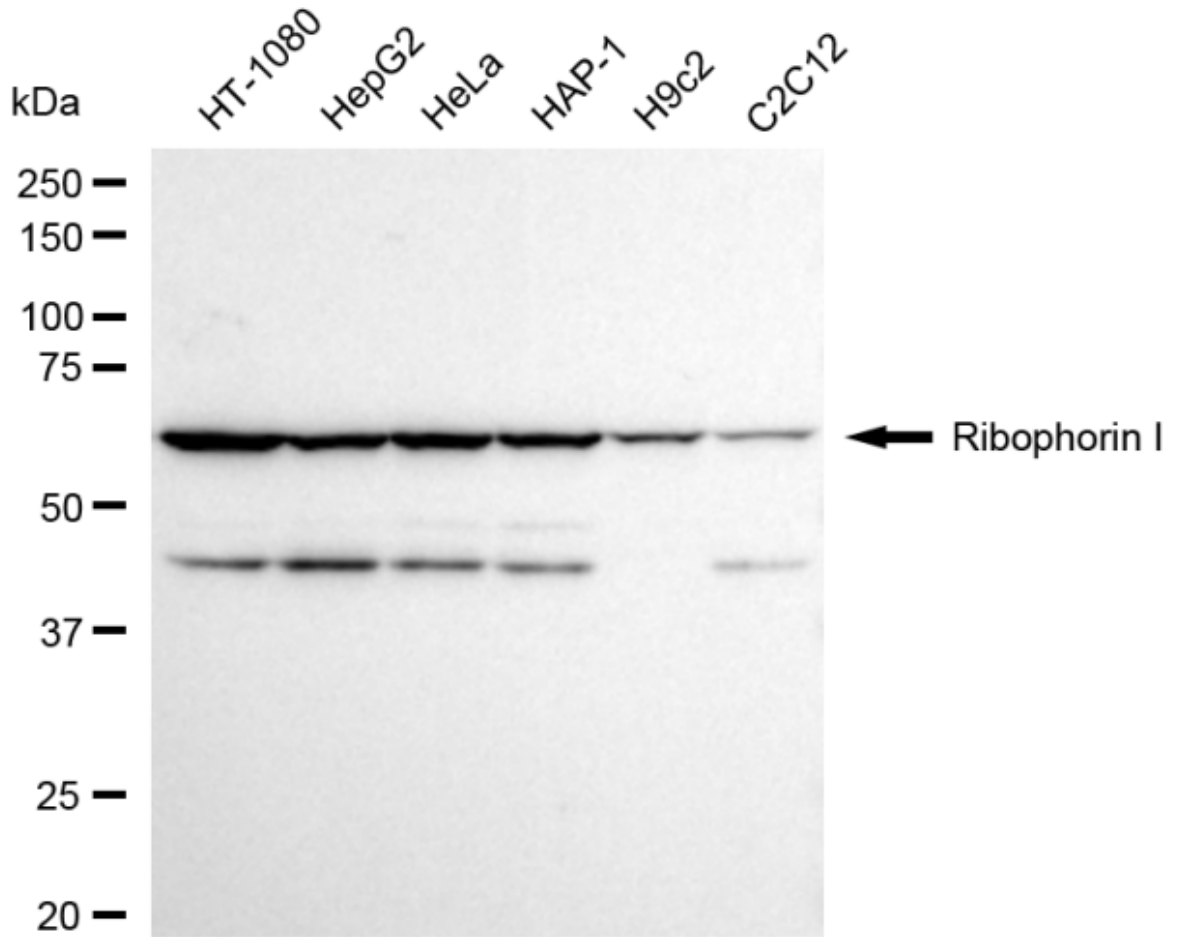
Western Blotting (WB): 1:1,000-1:5,000 Flow Cytometry (FCM): 1:2,000

Protocols

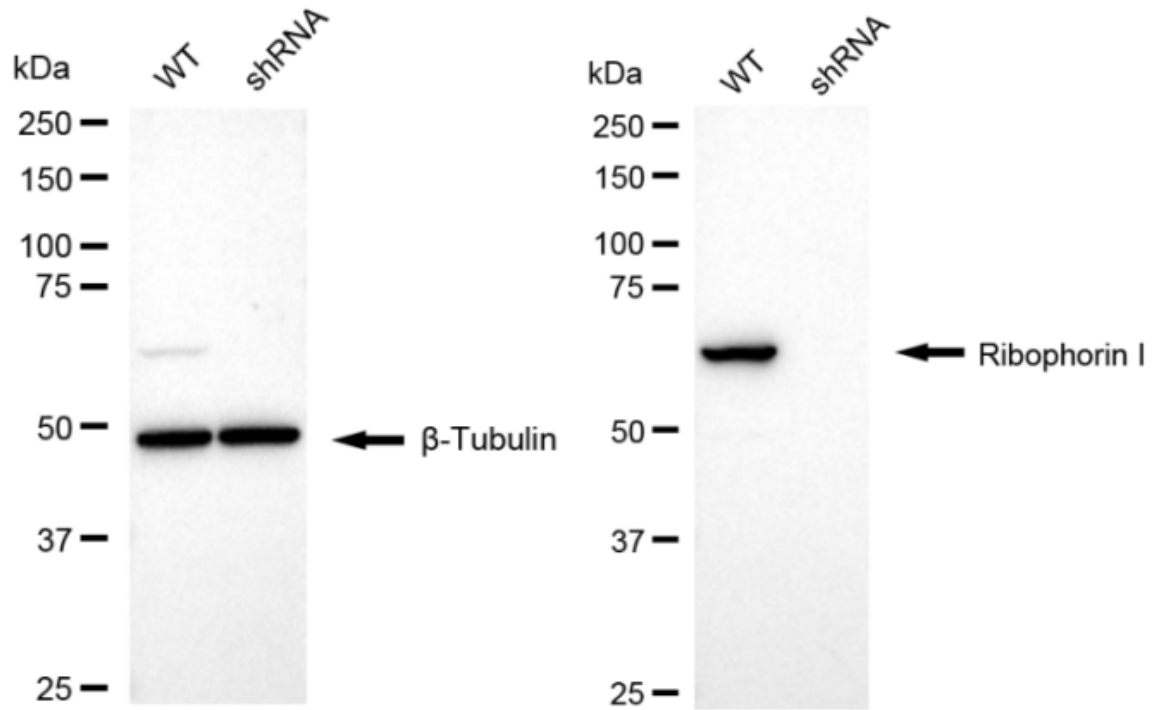
For general and specific antibody protocols please visit our website. Read all instructions before using this product.



Flow cytometric analysis of Ribophorin I expression in HT-1080 cells using anti-Ribophorin I antibody 1:2,000. Green, isotype control; red, Ribophorin I.



Western blotting analysis using anti-Ribophorin I antibody 1:5,000 and HRP-conjugated goat anti-rabbit secondary antibody 1:20,000 respectively. Image was developed using FeQ™ ECL Substrate Kit .



Western blotting analysis using anti-Ribophorin I antibody 1:5,000 and HRP-conjugated goat anti-rabbit secondary antibody 1:20,000 respectively. Image was developed using NaQ™ ECL Substrate Kit .