



SunLong Biotech Co.,LTD
Tel: 0086-571- 56623320 Fax:0086-571- 56623318
E-mail:sales@sunlongbiotech.com
www.sunlongbiotech.com

[KD-Validated] Anti-Replication protein A1 Rabbit Monoclonal Antibody

Cat No.: KD-10791

Aliases:

RPA1; Replication Protein A1; REPA1; RPA70; HSSB; RF-A; RP-A; Replication Protein A 70 KDa DNA-Binding Subunit; Single-Stranded DNA-Binding Protein; Replication Factor A Protein 1; Replication Protein A1, 70kDa; RF-A Protein 1; RP-A P70; Replication Protein A1 (70kD); PFBMFT6; MSTP075; MST075

Background:

UniProt Entry: [P27694](#);NCBI Gene Entry: [6117](#)

Application Information

Molecular Weight: Predicted, 68 kDa, observed, 70 kDa Clonality: Rabbit monoclonal antibody Clone ID: 23GB4885 Spncies Reactivity: Human, Rat Applications Tested: Western Blotting (WB), Flow Cytometry (FCM)

Immunogen

A synthesized peptide derived from human RPA70

Isotype

Rabbit IgG

Storage Buffer

Supplied in PBS (pH 7.4) containing 50% glycerol, and 0.02% sodium azide.

Storage

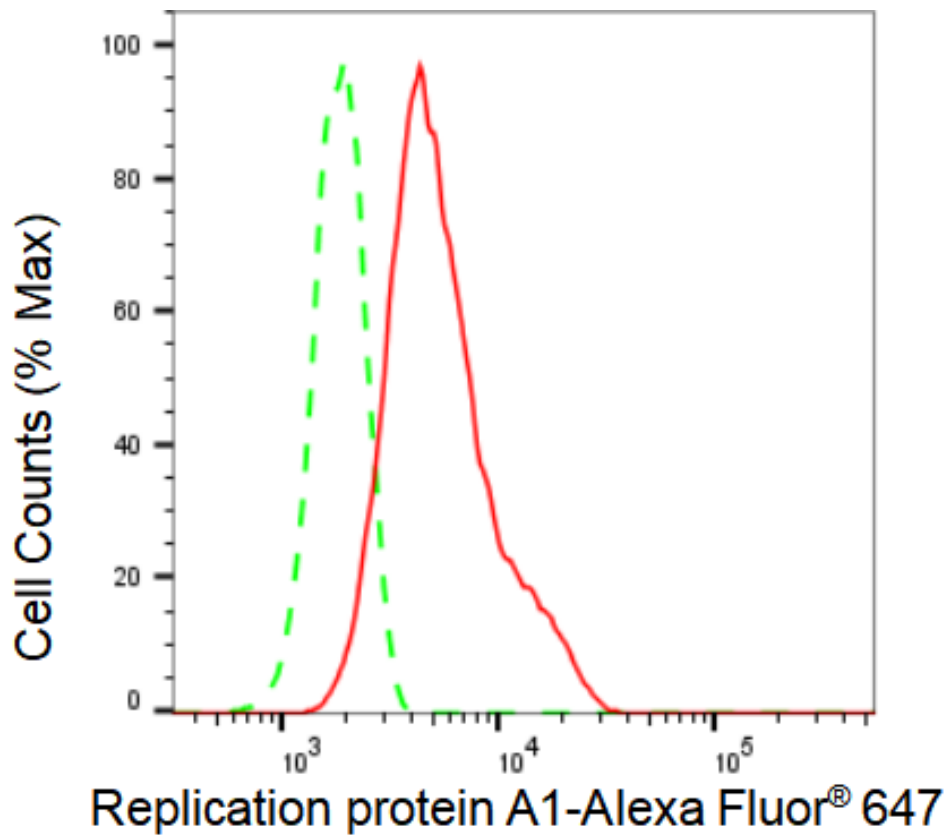
Store at -20 °C for one year.

Recommended Dilutions

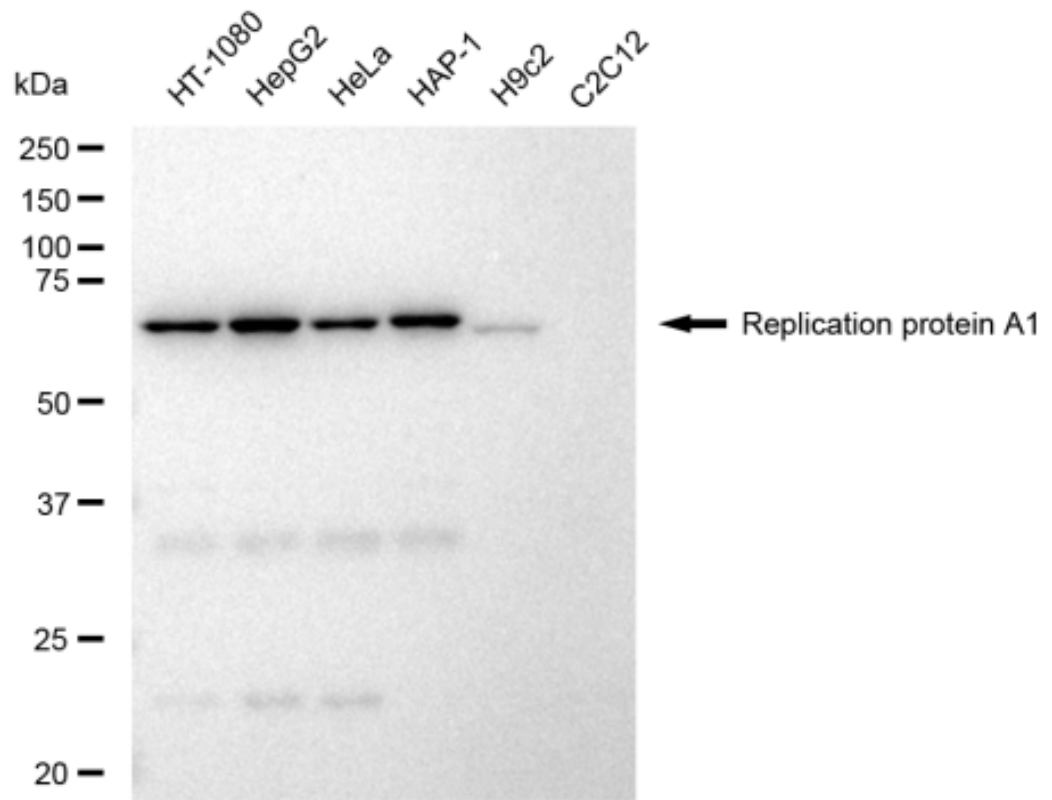
Western Blotting (WB): 1:1,000-1:5,000 Flow Cytometry (FCM): 1:2,000

Protocols

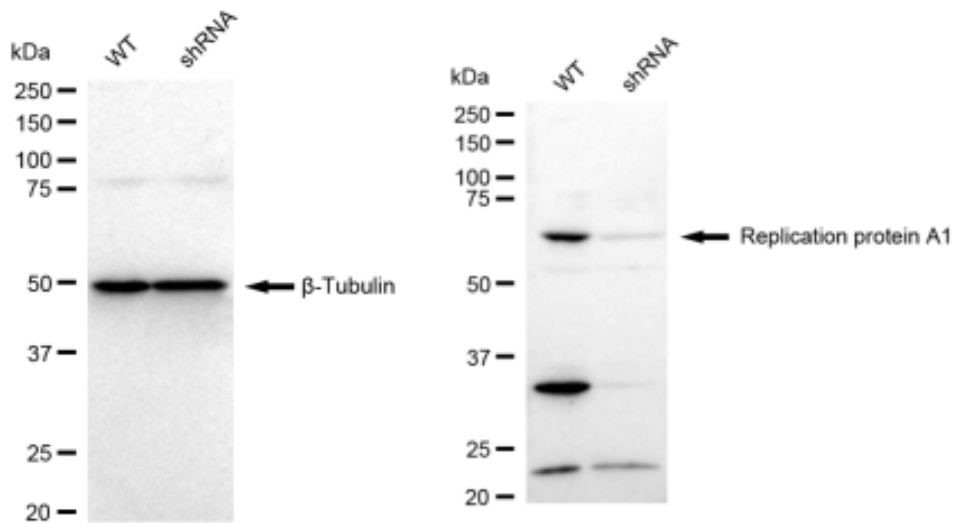
For general and specific antibody protocols please visit our website. Read all instructions before using this product.



Flow cytometric analysis of Replication protein A1 expression in HepG2 cells using Replication protein A1 antibody 1:2,000. Green, isotype control; red, Replication protein A1.



Western blotting analysis using anti-Replication protein A1 antibody 1:5,000 and HRP-conjugated goat anti-rabbit secondary antibody 1:20,000 respectively. Image was developed using FeQ™ ECL Substrate Kit .



Western blotting analysis using anti-Replication protein A1 antibody 1:5,000 and HRP-conjugated goat anti-rabbit secondary antibody 1:20,000 respectively. Image was developed using FeQ™ ECL Substrate Kit .