



SunLong Biotech Co.,LTD  
Tel: 0086-571- 56623320 Fax:0086-571- 56623318  
E-mail:sales@sunlongbiotech.com  
www.sunlongbiotech.com

## **[KD-Validated] Anti-Ring Finger Protein 40 Rabbit Monoclonal Antibody**

Cat No.: KD-10789

### **Aliases:**

Ring Finger Protein 40; RBP95; BRE1B; KIAA0661; STARING; 95 KDa Retinoblastoma-Associated Protein; RING-Type E3 Ubiquitin Transferase BRE1B; E3 Ubiquitin-Protein Ligase BRE1B; BRE1-B; Ring Finger Protein 40, E3 Ubiquitin Protein Ligase; BRE1 E3 Ubiquitin Ligase Homolog B (S. Cerevisiae); 95 KDa Retinoblastoma Protein Binding Protein; BRE1 E3 Ubiquitin Ligase Homolog B; RING Finger Protein 40; Rb-Associated Protein; EC 2.3.2.27; EC 6.3.2

### **Background:**

UniProt Entry: [O75150](#);NCBI Gene Entry: [9810](#)

### **Application Information**

Molecular Weight: Predicted, 114 kDa, observed, 130 kDa Clonality: Rabbit monoclonal antibody Clone ID: 24GB1100 Species Reactivity: Human, Mouse, Rat Applications Tested: Western Blotting (WB), Immunocytochemistry (IC)

### **Immunogen**

A synthesized peptide derived from human RNF40

### **Isotype**

Rabbit IgG

### **Storage Buffer**

Supplied in PBS (pH 7.4) containing 50% glycerol, and 0.02% sodium azide.

#### **Storage**

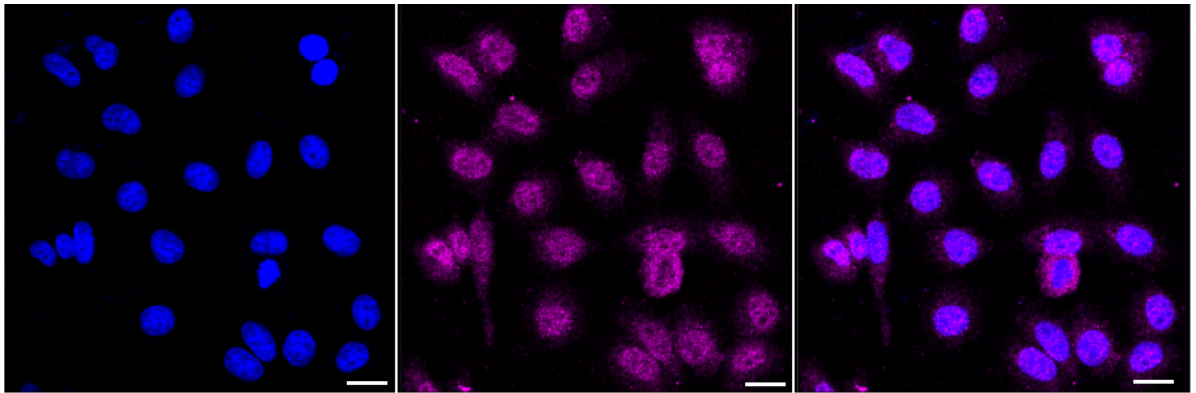
Store at -20 °C for one year.

#### **Recommended Dilutions**

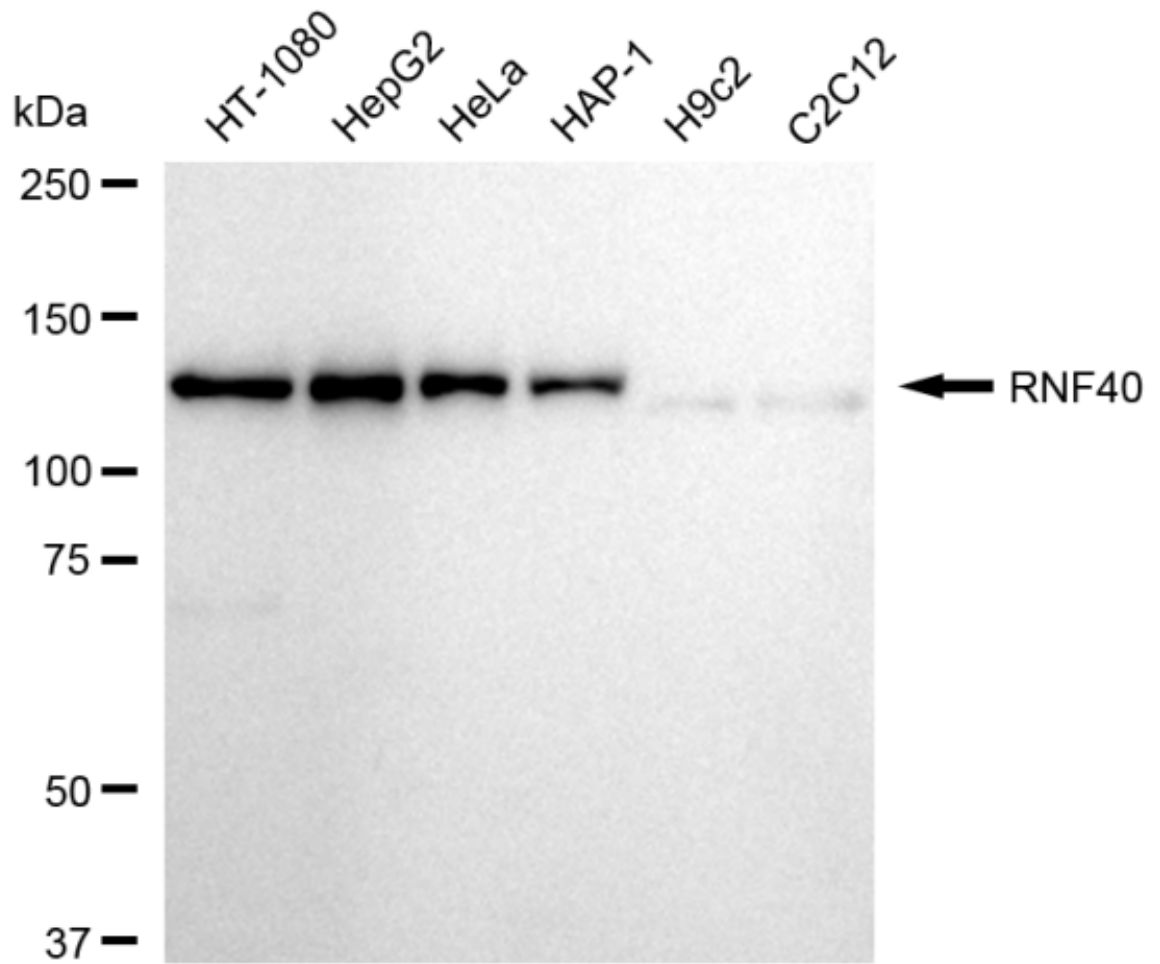
Western Blotting (WB): 1:1,000-1:5,000 Immunocytochemistry (IC): 1:1,000

#### **Protocols**

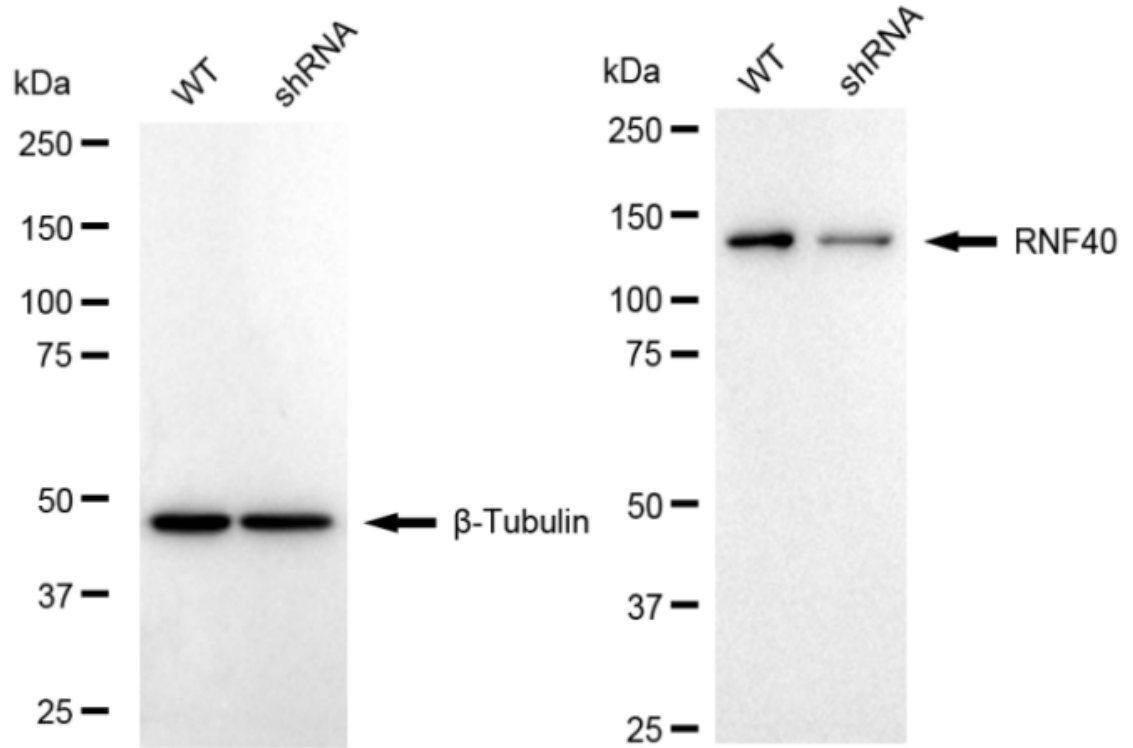
For general and specific antibody protocols please visit our website. Read all instructions before using this product.



Immunocytochemical staining of HepG2 cells with anti-RNF40 antibody 1:1,000. Nuclei were stained blue with DAPI; RNF40 was stained magenta with Alexa Fluor® 647. Images were taken using Leica stellaris 5. Protein abundance based on laser Intensity and smart gain: Medium. Scale bar: 20 µm.



Western blotting analysis using anti-RNF40 antibody 1:5,000 and HRP-conjugated goat anti-rabbit secondary antibody 1:20,000 respectively. Image was developed using FeQ™ ECL Substrate Kit .



Western blotting analysis using anti-RNF40 antibody 1:5,000 and HRP-conjugated goat anti-rabbit secondary antibody 1:20,000 respectively. Image was developed using NaQ™ ECL Substrate Kit .