



SunLong Biotech Co.,LTD
Tel: 0086-571- 56623320 Fax:0086-571- 56623318
E-mail:sales@sunlongbiotech.com
www.sunlongbiotech.com

[KD-Validated] Anti-RING1 Rabbit Monoclonal Antibody

Cat No.: KD-10787

Aliases:

Ring Finger Protein 1; RNF1; RING-Type E3 Ubiquitin Transferase RING1; Really Interesting New Gene 1 Protein; E3 Ubiquitin-Protein Ligase RING1; Polycomb Complex Protein RING1; RING Finger Protein 1; EC 2.3.2.27; EC 6.3.2; RING1A

Background:

UniProt Entry: [Q06587](#);NCBI Gene Entry: [6015](#)

Application Information

Molecular Weight: Predicted, 42 kDa, observed, 50 kDa Clonality: Rabbit monoclonal antibody Clone ID: 23GB955 Species Reactivity: Human Applications Used: Western Blotting (WB), Flow Cytometry (FCM), Immunocytochemistry (IC)

Immunogen

A synthesized peptide derived from human RING1

Isotype

Rabbit IgG

Storage Buffer

Supplied in PBS (pH 7.4) containing 50% glycerol, and 0.02% sodium azide.

Storage

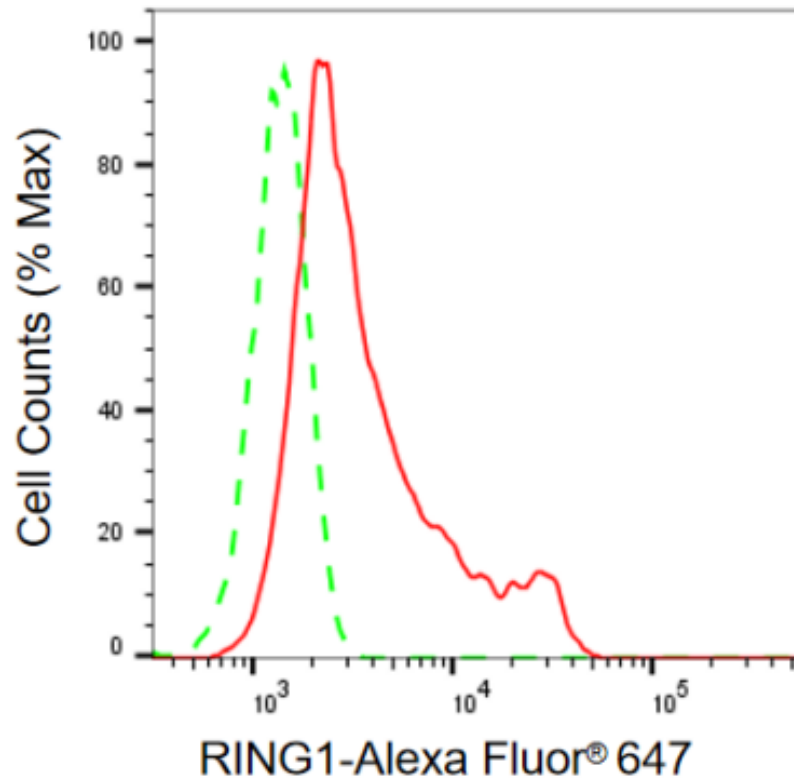
Store at -20 °C for one year.

Recommended Dilutions

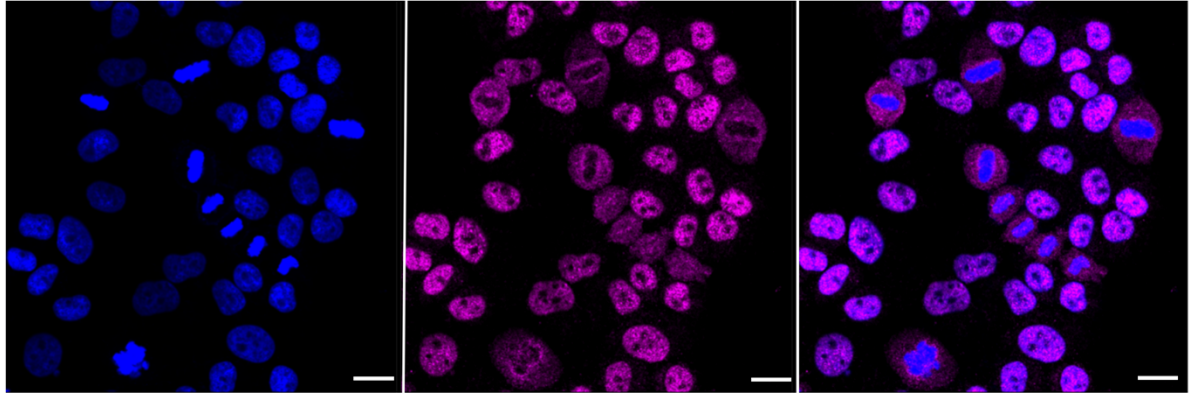
Western Blotting (WB): 1:1,000-1:5,000 Flow Cytometry (FCM): 1:2,000
Immunocytochemistry (IC): 1:1,000

Protocols

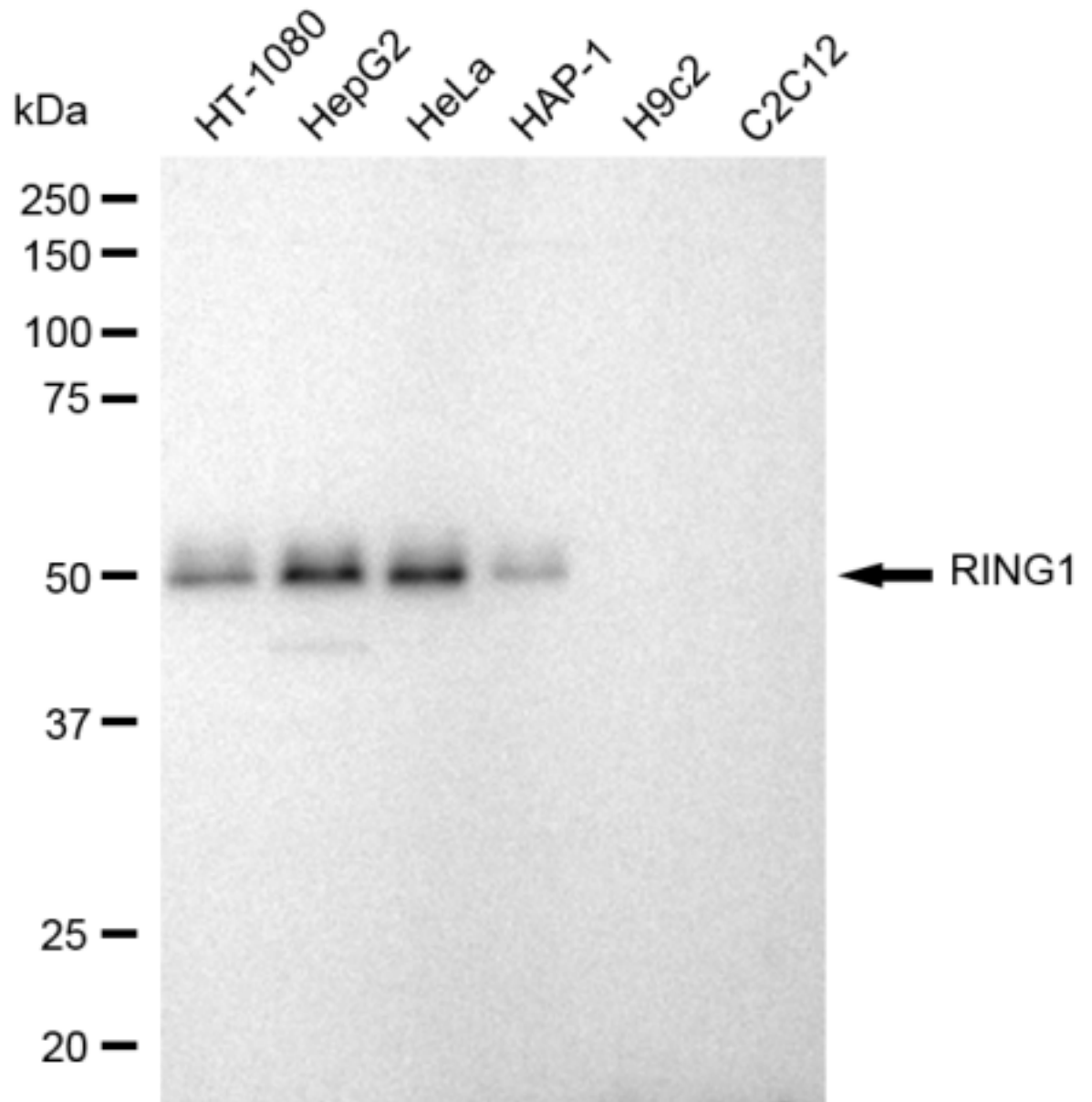
For general and specific antibody protocols please visit our website. Read all instructions before using this product.



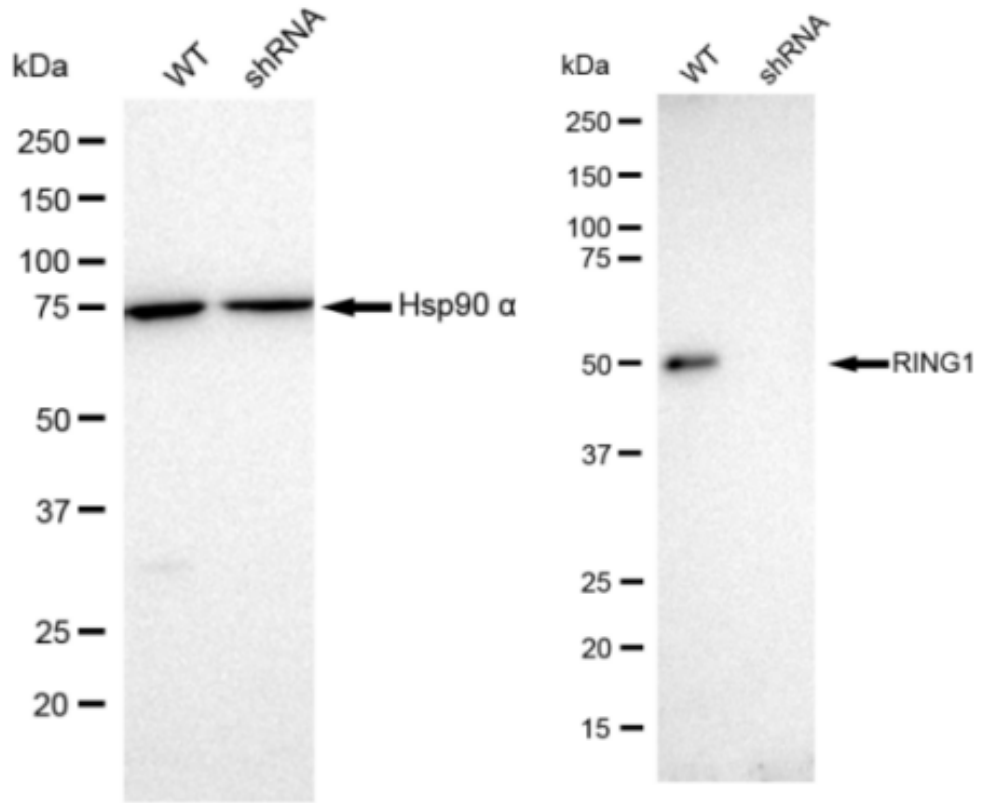
Flow cytometric analysis of RING1 expression in HepG2 cells using RING1 antibody 1:2,000. Green, isotype control; red, RING1.



Immunocytochemical staining of HepG2 cells with RING1 antibody 1:1,000. Nuclei were stained blue with DAPI; RING1 was stained magenta with Alexa Fluor® 647. Images were taken using Leica stellaris 5. Protein abundance based on laser Intensity and smart gain: High. Scale bar: 20 μm .



Western blotting analysis using anti-RING1 antibody 1:5,000 and HRP-conjugated goat anti-rabbit secondary antibody 1:50,000 respectively. Image was developed using FeQ™ ECL Substrate Kit .



Western blotting analysis using anti-RING1 antibody 1:5,000 and HRP-conjugated goat anti-rabbit secondary antibody 1:50,000 respectively. Image was developed using FeQ™ ECL Substrate Kit .