



SunLong Biotech Co.,LTD  
Tel: 0086-571- 56623320 Fax:0086-571- 56623318  
E-mail:sales@sunlongbiotech.com  
www.sunlongbiotech.com

## **[KD-Validated] Anti-RELB Rabbit Monoclonal Antibody**

Cat No.: KD-10785

### **Aliases:**

RELB; RELB Proto-Oncogene, NF-KB Subunit; REL-B; V-Rel Avian Reticuloendotheliosis Viral Oncogene Homolog B (Nuclear Factor Of Kappa Light Polypeptide Gene Enhancer In B-Cells 3); Transcription Factor RelB ; V-Rel Reticuloendotheliosis Viral Oncogene Homolog B, Nuclear Factor Of Kappa Light Polypeptide Gene Enhancer In B-Cells 3; I-REL; IMD53; I-Rel; IREL

### **Background:**

UniProt Entry: [Q01201](#);NCBI Gene Entry: [5971](#)

### **Application Information**

Molecular Weight: Predicted, 62 kDa, observed, 70 kDa Clonality: Rabbit monoclonal antibody Clone ID: 24GB5070 Species Reactivity: Human, Mouse, Rat Applications Tested: Western Blotting (WB), Flow Cytometry (FCM)

### **Immunogen**

A synthesized peptide derived from human Rel B

### **Isotype**

Rabbit IgG

### **Storage Buffer**

Supplied in PBS (pH 7.4) containing 50% glycerol, and 0.02% sodium azide.

**Storage**

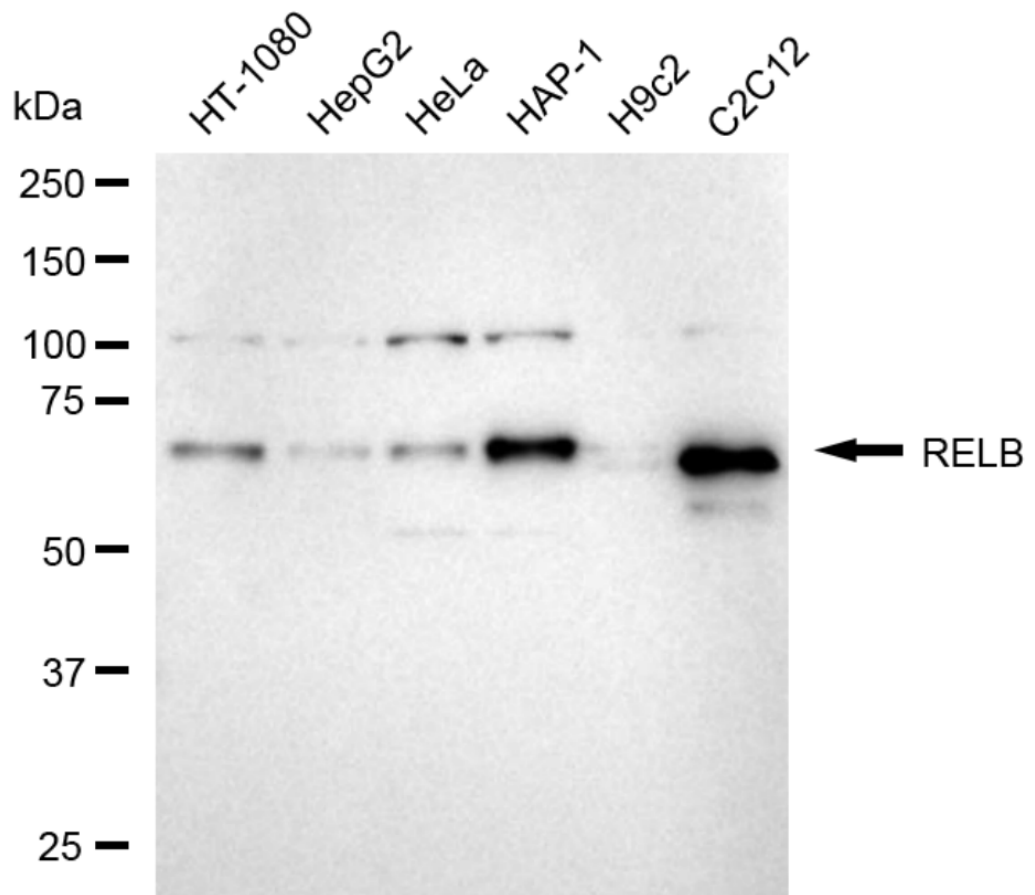
Store at -20 °C for one year.

**Recommended Dilutions**

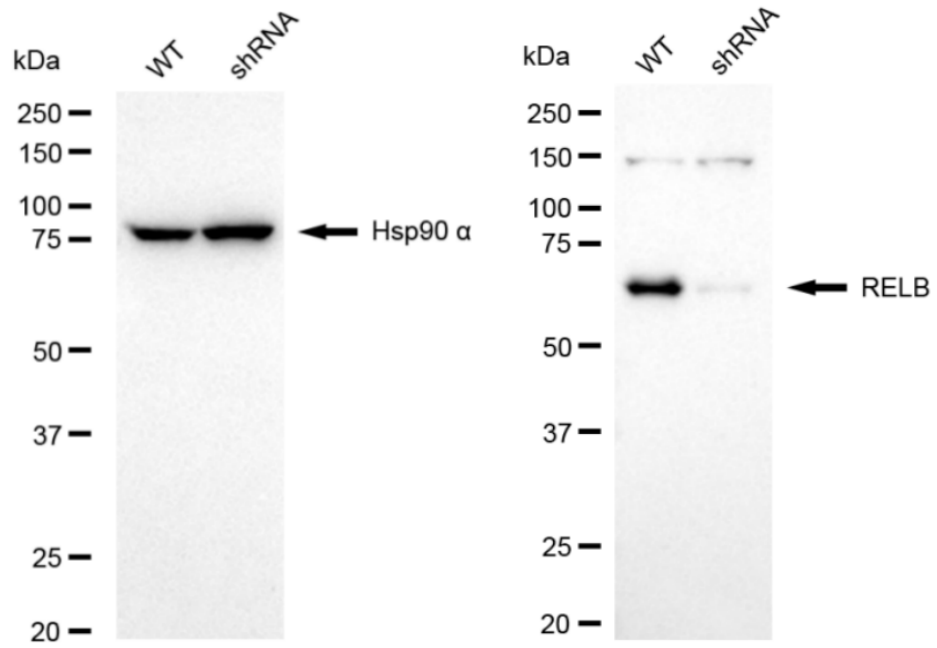
Western Blotting (WB): 1:1,000-1:5,000 Flow Cytometry (FCM): 1:2,000

**Protocols**

For general and specific antibody protocols please visit our website. Read all instructions before using this product.



Western blotting analysis using anti-RELB antibody 1:5,000 and HRP-conjugated goat anti-rabbit secondary antibody 1:20,000 respectively. Image was developed using FeQ™ ECL Substrate Kit .



Western blotting analysis using anti-RELB antibody 1:5,000 and HRP-conjugated goat anti-rabbit secondary antibody 1:20,000 respectively. Image was developed using NaQ™ ECL Substrate Kit 1:2,000. Green, isotype control; red, RELB.