



SunLong Biotech Co.,LTD
Tel: 0086-571- 56623320 Fax:0086-571- 56623318
E-mail:sales@sunlongbiotech.com
www.sunlongbiotech.com

[KD-Validated] Anti-NF- κ B p65 Rabbit Monoclonal Antibody

Cat No.: KD-10783

Aliases:

RELA; RELA Proto-Oncogene, NF-KB Subunit; Nuclear Factor Of Kappa Light Polypeptide Gene Enhancer In B-Cells; NFKB3; P65; V-Rel Avian Reticuloendotheliosis Viral Oncogene Homolog A; Nuclear Factor NF-Kappa-B P65 Subunit; Transcription Factor P65; NF-Kappa-B Transcription Factor P65; NF-Kappa-B; P65delta3; AIF3BL3; CMCU

Background:

UniProt Entry: [Q04206](#);NCBI Gene Entry: [5970](#)

Application Information

Molecular Weight: Predicted, 60 kDa, observed, 65 kDa Clonality: Rabbit monoclonal antibody Clone ID: 23GB1490 Species Reactivity: Human, Mouse, Rat Applications Tested: Western Blotting (WB), Flow Cytometry (FCM), Immunocytochemistry (IC)

Immunogen

A synthesized peptide derived from human NF- κ B p65

Isotype

Rabbit IgG

Storage Buffer

Supplied in PBS (pH 7.4) containing 50% glycerol, and 0.02% sodium azide.

Storage

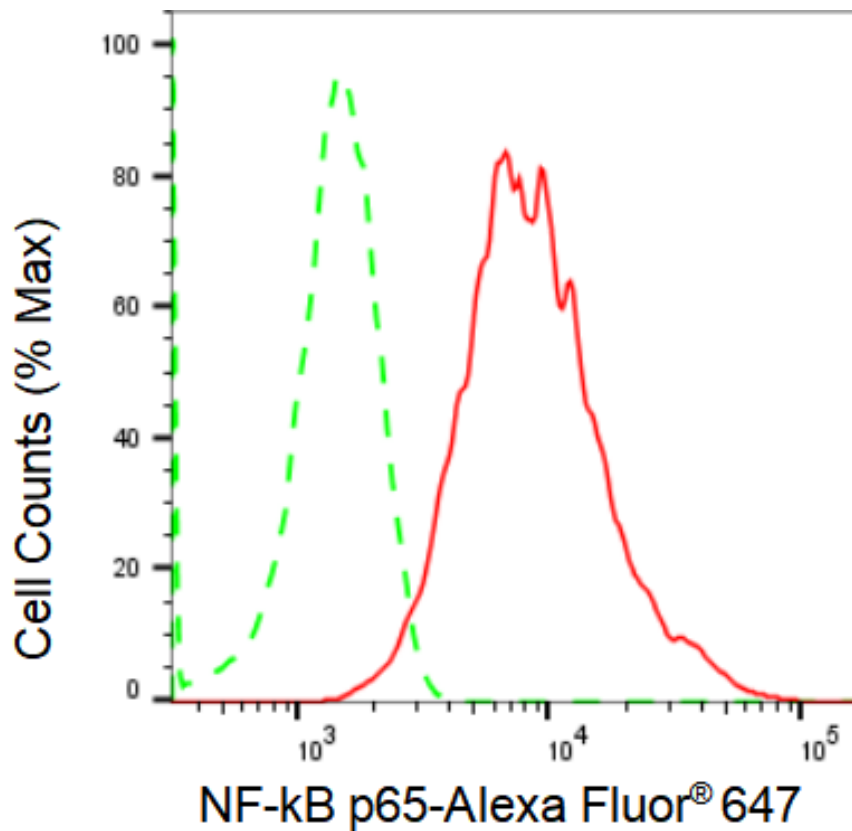
Store at -20 °C for one year.

Recommended Dilutions

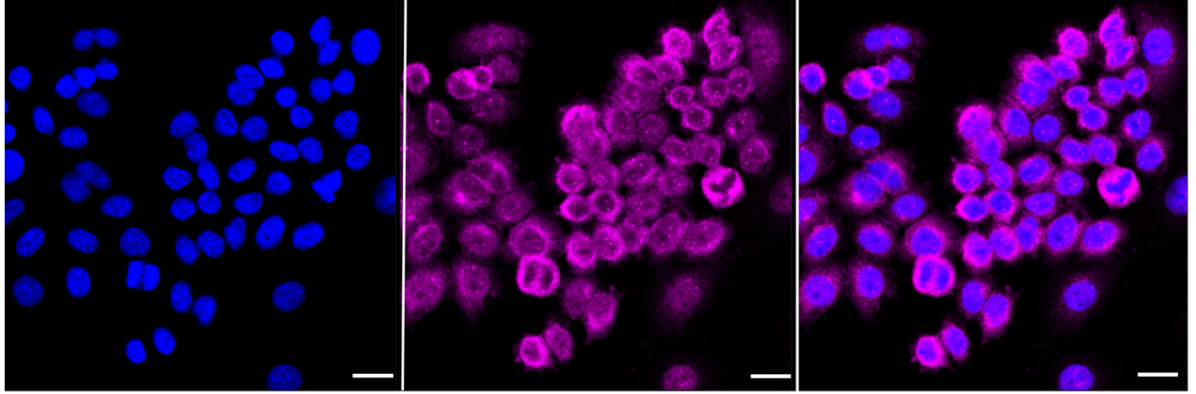
Western Blotting (WB): 1:1,000-1:10,000 Flow Cytometry (FCM): 1:2,000
Immunocytochemistry (IC): 1:1,000

Protocols

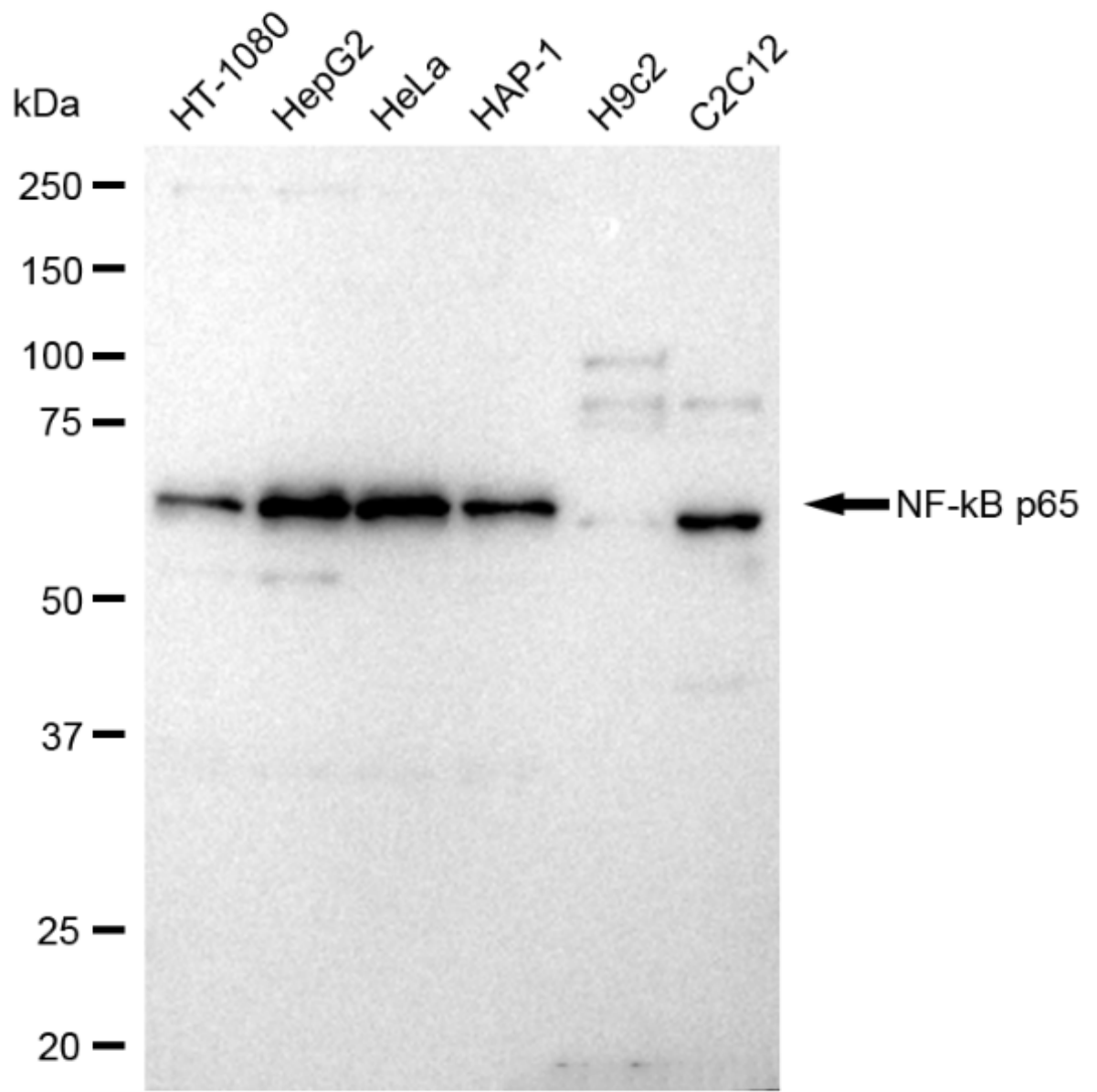
For general and specific antibody protocols please visit our website. Read all instructions before using this product.



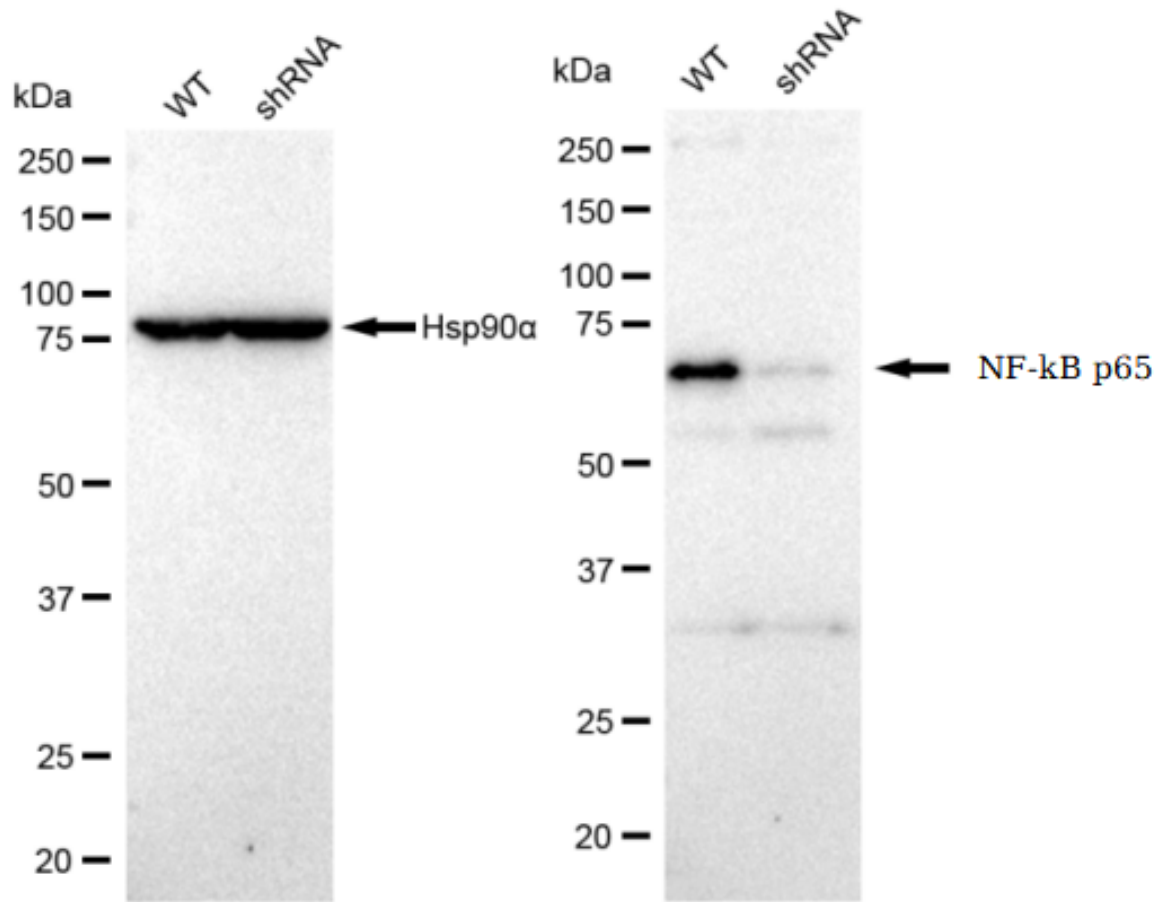
Flow cytometric analysis of NF-kB p65 expression in HepG2 cells using NF-kB p65 antibody 1:2,000. Green, isotype control; red, NF-kB p65.



Immunocytochemical staining of HepG2 cells with NF-kB p65 antibody 1:1,000. Nuclei were stained blue with DAPI; NF-kB p65 was stained magenta with Alexa Fluor® 647. Images were taken using Leica stellaris 5. Protein abundance based on laser Intensity and smart gain: High. Scale bar: 20 μ m.



Western blotting analysis using anti-NF-kB p65 antibody 1:10,000 and HRP-conjugated goat anti-rabbit secondary antibody 1:20,000 respectively. Image was developed using FeQ™ ECL Substrate Kit .



Western blotting analysis using anti-NF-kB p65 antibody 1:10,000 and HRP-conjugated goat anti-rabbit secondary antibody 1:20,000 respectively. Image was developed using FeQ™ ECL Substrate Kit .