



SunLong Biotech Co.,LTD
Tel: 0086-571- 56623320 Fax:0086-571- 56623318
E-mail:sales@sunlongbiotech.com
www.sunlongbiotech.com

[KD-Validated] Anti-RBBP4 Rabbit Monoclonal Antibody

Cat No.: KD-10781

Aliases:

RB Binding Protein 4, Chromatin Remodeling Factor; Retinoblastoma-Binding Protein 4; RbAp48; NURF55; Lin-53; Nucleosome-Remodeling Factor Subunit RBAP48; Chromatin Assembly Factor I P48 Subunit; Chromatin Assembly Factor 1 Subunit C; Retinoblastoma-Binding Protein P48; Histone-Binding Protein RBBP4; CAF-I 48 KDa Subunit; CAF-1 Subunit C; CAF-I P48; RBBP-4; Chromatin Assembly Factor/CAF-1 P48 Subunit; Retinoblastoma Binding Protein 4; MSI1 Protein Homolog; RBAP48

Background:

UniProt Entry: [Q09028](#);NCBI Gene Entry: [5928](#)

Application Information

Molecular Weight: Predicted, 48 kDa, observed, 52 kDa Clonality: Rabbit monoclonal antibody Clone ID: 24GB1240 Species Reactivity: Human, Mouse, Rat Applications Tested: Western Blotting (WB), Flow Cytometry (FCM), Immunocytochemistry (IC)

Immunogen

A synthesized peptide derived from human RbAp48

Isotype

Rabbit IgG

Storage Buffer

Supplied in PBS (pH 7.4) containing 50% glycerol, and 0.02% sodium azide.

Storage

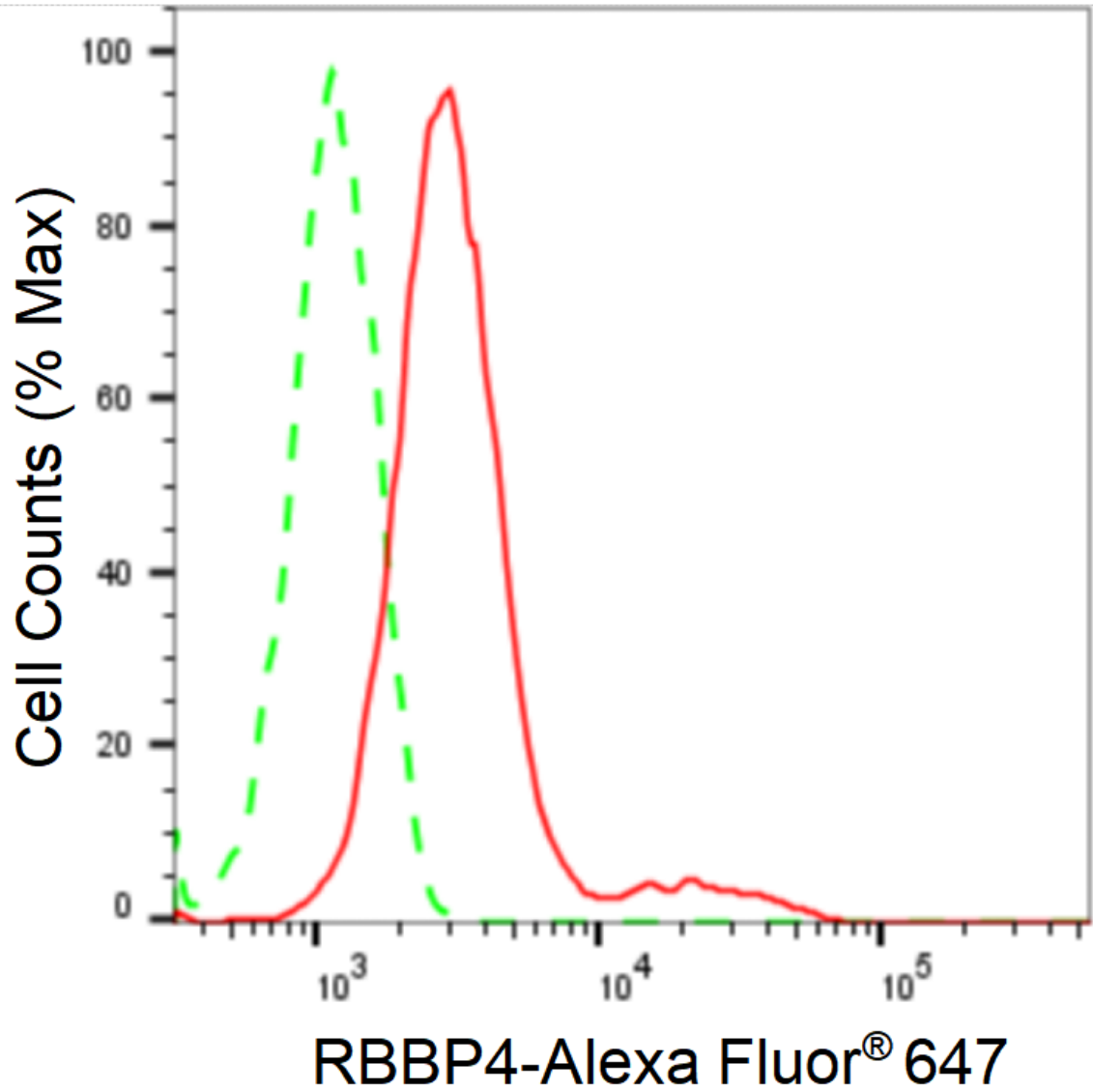
Store at -20 °C for one year.

Recommended Dilutions

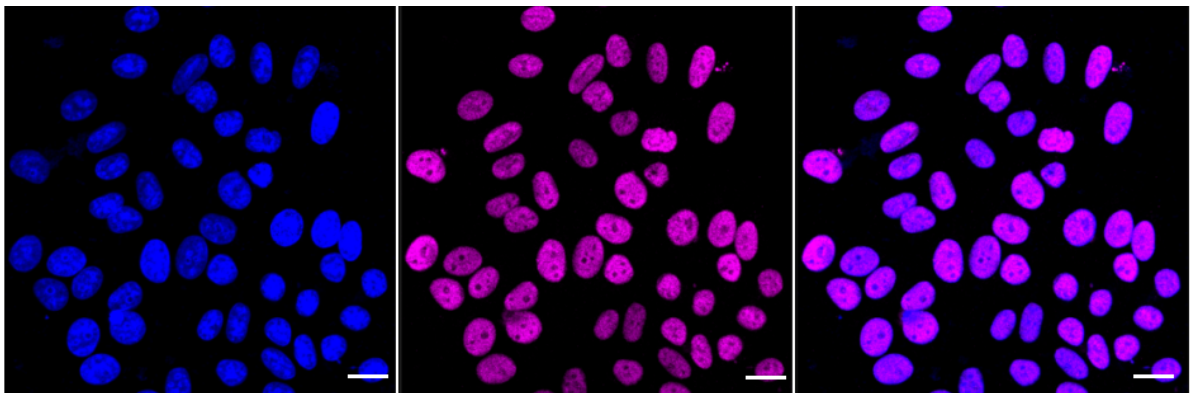
Western Blotting (WB): 1:1,000-1:5,000 Flow Cytometry (FCM): 1:2,000
Immunocytochemistry (IC): 1:1,000

Protocols

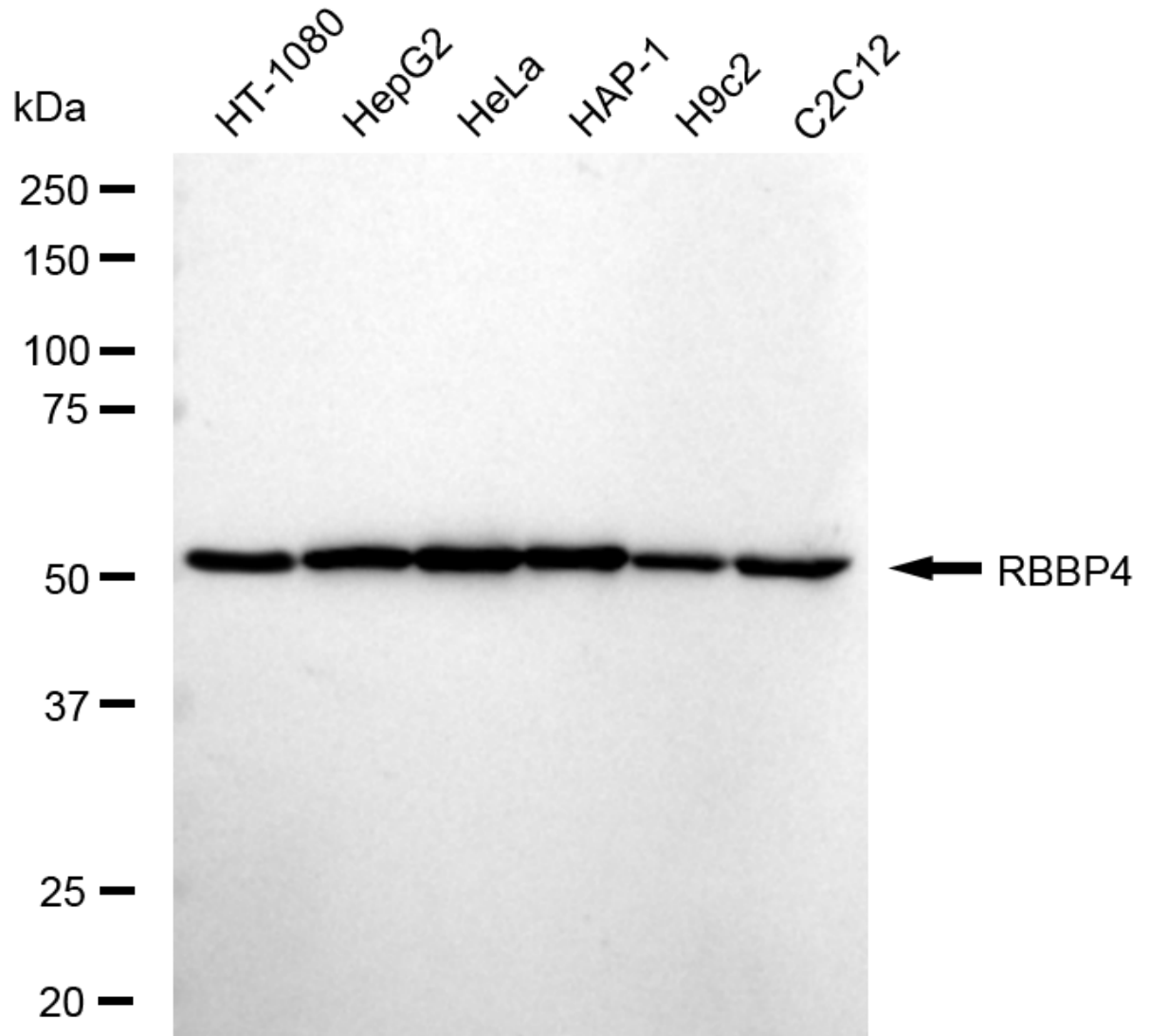
For general and specific antibody protocols please visit our website. Read all instructions before using this product.



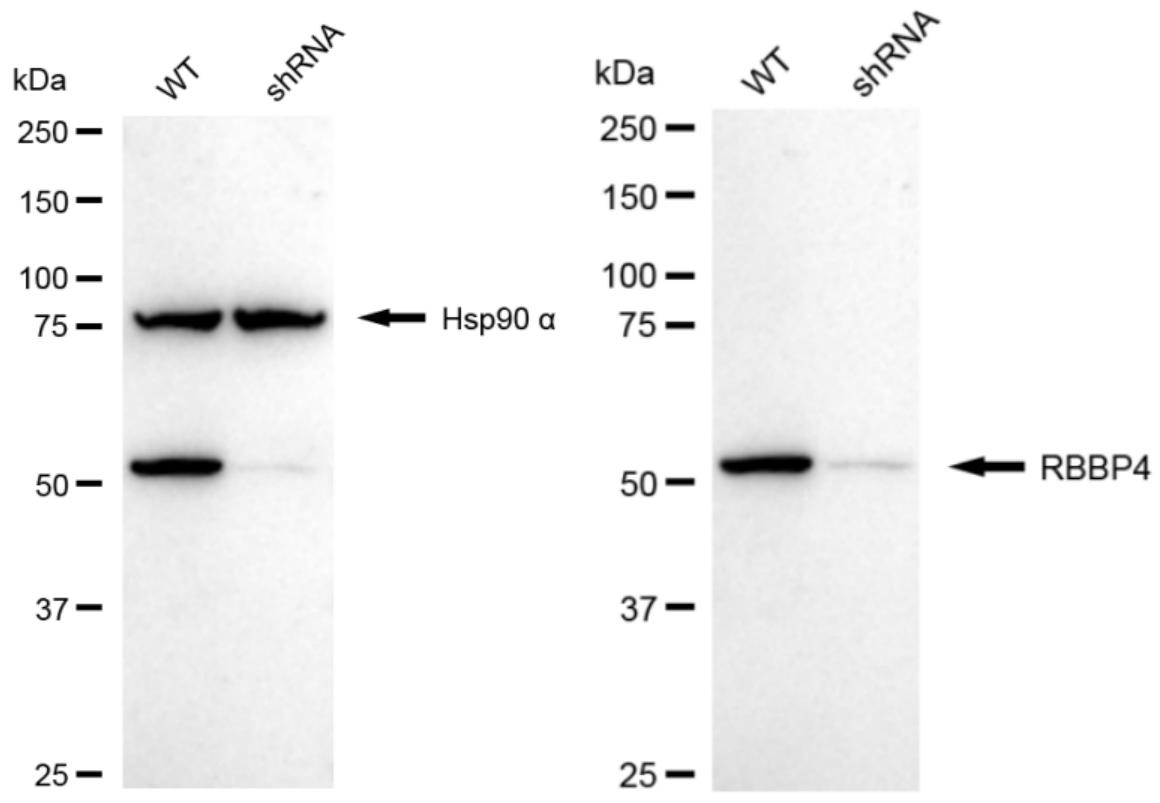
Flow cytometric analysis of RBBP4 expression in HepG2 cells using anti-RBBP4 antibody 1:2,000. Green, isotype control; red, RBBP4.



Immunocytochemical staining of HepG2 cells with anti-RBBP4 antibody 1:1,000. Nuclei were stained blue with DAPI; RBBP4 was stained magenta with Alexa Fluor® 647. Images were taken using Leica stellaris 5. Protein abundance based on laser Intensity and smart gain: Medium. Scale bar: 20 μ m.



Western blotting analysis using anti-RBBP4 antibody 1:5,000 and HRP-conjugated goat anti-rabbit secondary antibody 1:20,000 respectively. Image was developed using FeQ™ ECL Substrate Kit .



Western blotting analysis using anti-RBBP4 antibody 1:5,000 and HRP-conjugated goat anti-rabbit secondary antibody 1:20,000 respectively. Image was developed using NaQ™ ECL Substrate Kit .