



SunLong Biotech Co.,LTD
Tel: 0086-571- 56623320 Fax:0086-571- 56623318
E-mail:sales@sunlongbiotech.com
www.sunlongbiotech.com

[KD-Validated] Anti-Retinoic Acid Receptor beta Rabbit Monoclonal Antibody

Cat No.: KD-10778

Aliases:

Retinoic Acid Receptor Beta; RAR-Beta; NR1B2; HAP; RARbeta; RRB2; Nuclear Receptor Subfamily 1 Group B Member 2; HBV-Activated Protein; RAR-Epsilon; Retinoic Acid Receptor, Beta Polypeptide; Hepatitis B Virus Activated Protein; Retinoic Acid Receptor, Beta; RARbeta1; MCOPS12

Background:

UniProt Entry: [P10826](#);NCBI Gene Entry: [5915](#)

Application Information

Molecular Weight: Predicted, 50 kDa, observed, 55 kDa Clonality: Rabbit monoclonal antibody Clone ID: 24GB1045 Species Reactivity: Human Applications Used: Western Blotting (WB), Flow Cytometry (FCM), Immunocytochemistry (IC)

Immunogen

A synthesized peptide derived from human Retinoic Acid Receptor beta

Isotype

Rabbit IgG

Storage Buffer

Supplied in PBS (pH 7.4) containing 50% glycerol, and 0.02% sodium azide.

Storage

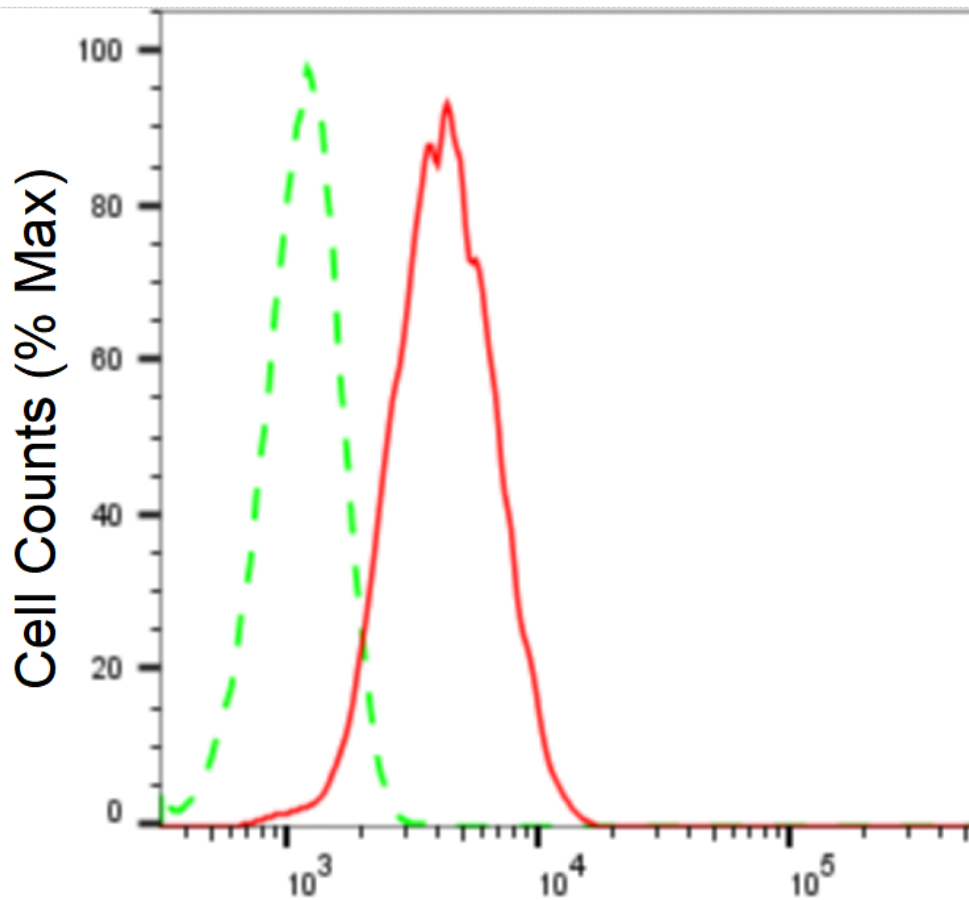
Store at -20 °C for one year.

Recommended Dilutions

Western Blotting (WB): 1:1,000-1:5,000 Flow Cytometry (FCM): 1:2,000
Immunocytochemistry (IC): 1:1,000

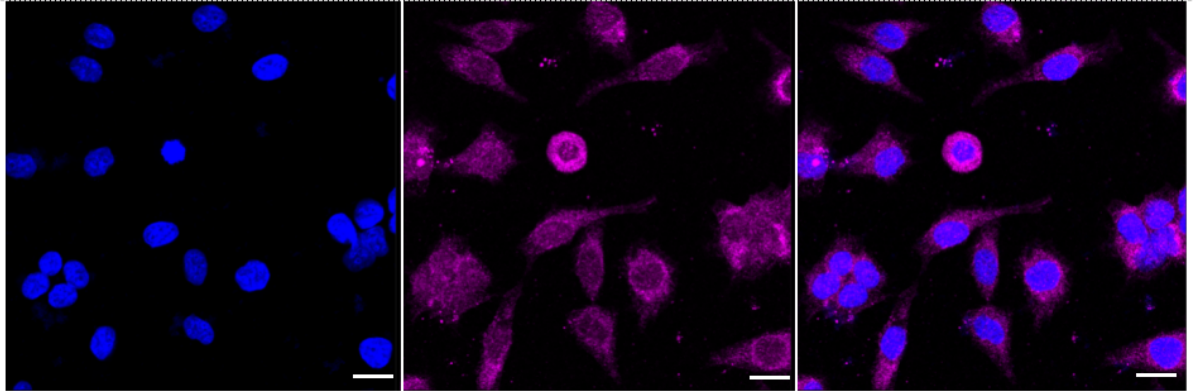
Protocols

For general and specific antibody protocols please visit our website. Read all instructions before using this product.

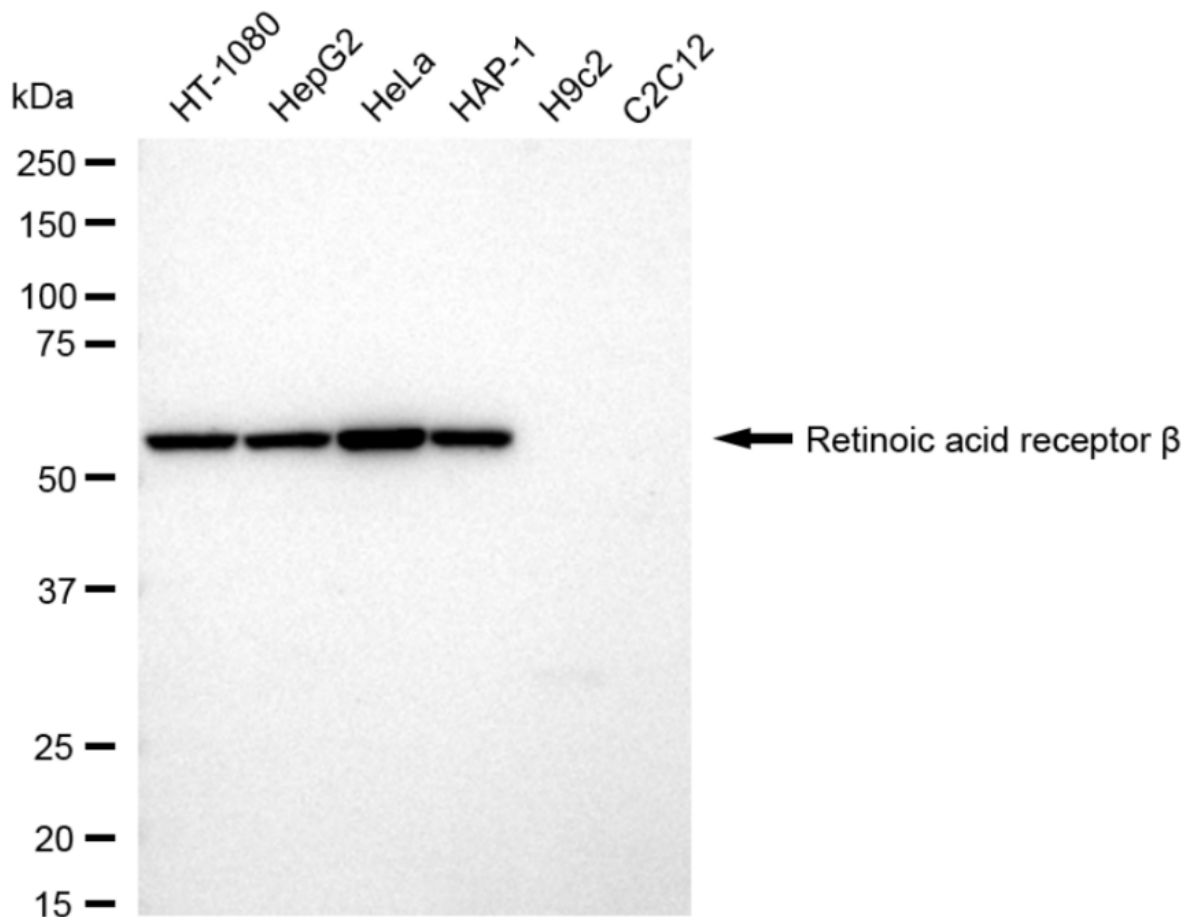


Retinoic acid receptor beta-Alexa Fluor[®] 647

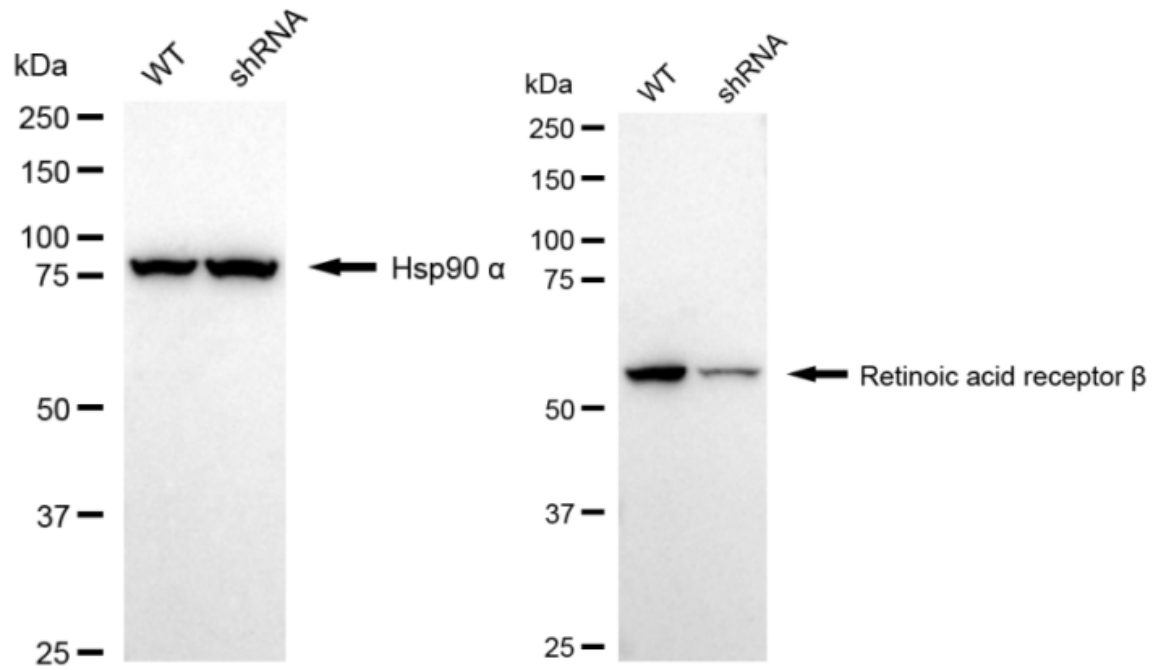
Flow cytometric analysis of Retinoic acid receptor beta expression in HeLa cells using Retinoic acid receptor beta antibody 1:2,000. Green, isotype control; red, Retinoic acid receptor beta.



Immunocytochemical staining of HeLa cells with anti-Retinoic acid receptor beta antibody 1:1,000. Nuclei were stained blue with DAPI; Retinoic acid receptor beta was stained magenta with Alexa Fluor® 647. Images were taken using Leica stellaris 5. Protein abundance based on laser Intensity and smart gain: Medium. Scale bar: 20 μ m.



Western blotting analysis using anti-Retinoic acid receptor beta antibody 1:5,000 and HRP-conjugated goat anti-rabbit secondary antibody 1:20,000 respectively. Image was developed using FeQ™ ECL Substrate Kit .



Western blotting analysis using anti-Retinoic Acid Receptor alpha antibody 1:5,000 and HRP-conjugated goat anti-rabbit secondary antibody 1:20,000 respectively. Image was developed using NaQ™ ECL Substrate Kit .