



SunLong Biotech Co.,LTD
Tel: 0086-571- 56623320 Fax:0086-571- 56623318
E-mail:sales@sunlongbiotech.com
www.sunlongbiotech.com

[KD-Validated] Anti-Raf1 Rabbit Monoclonal Antibody

Cat No.: KD-10774

Aliases:

RAF1; Raf-1 Proto-Oncogene, Serine/Threonine Kinase; Raf-1; CRAF; RAF Proto-Oncogene Serine/Threonine-Protein Kinase; V-Raf-1 Murine Leukemia Viral Oncogene Homolog 1; C-Raf Proto-Oncogene, Serine/Threonine Kinase; Proto-Oncogene C-RAF; EC 2.7.11.1; C-Raf; V-Raf-1 Murine Leukemia Viral Oncogene-Like Protein 1; Raf Proto-Oncogene Serine/Threonine Protein Kinase; Oncogene RAF1; EC 2.7.11; CMD1NN; C-RAF; RAF-1; CRaf; NS5; RAF

Background:

UniProt Entry: [P04049](#);NCBI Gene Entry: [5894](#)

Application Information

Molecular Weight: Predicted, 73 kDa, observed, 73 kDa Clonality: Rabbit monoclonal antibody Clone ID: 23GB2640 Species Reactivity: Human, Mouse, Rat Applications Tested: Western Blotting (WB), Flow Cytometry (FCM), Immunocytochemistry (IC)

Immunogen

A synthesized peptide derived from human Phospho-Raf1 (S621)

Isotype

Rabbit IgG

Storage Buffer

Supplied in PBS (pH 7.4) containing 50% glycerol, and 0.02% sodium azide.

Storage

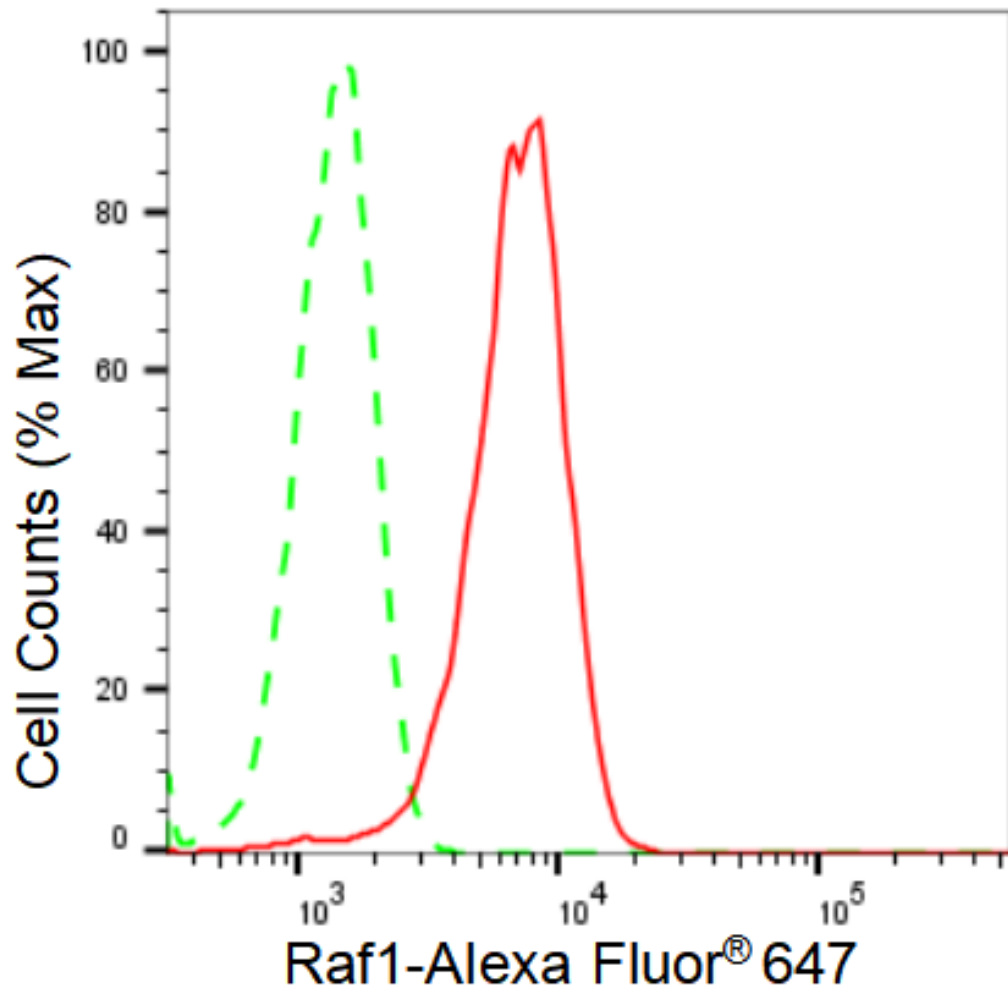
Store at -20 °C for one year.

Recommended Dilutions

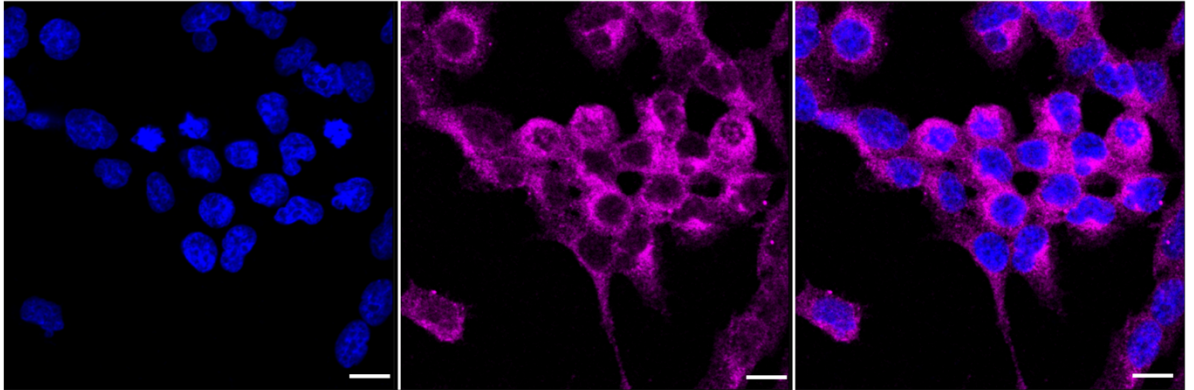
Western Blotting (WB): 1:1,000-1:5,000 Flow Cytometry (FCM): 1:2,000
Immunocytochemistry (IC): 1:1,000

Protocols

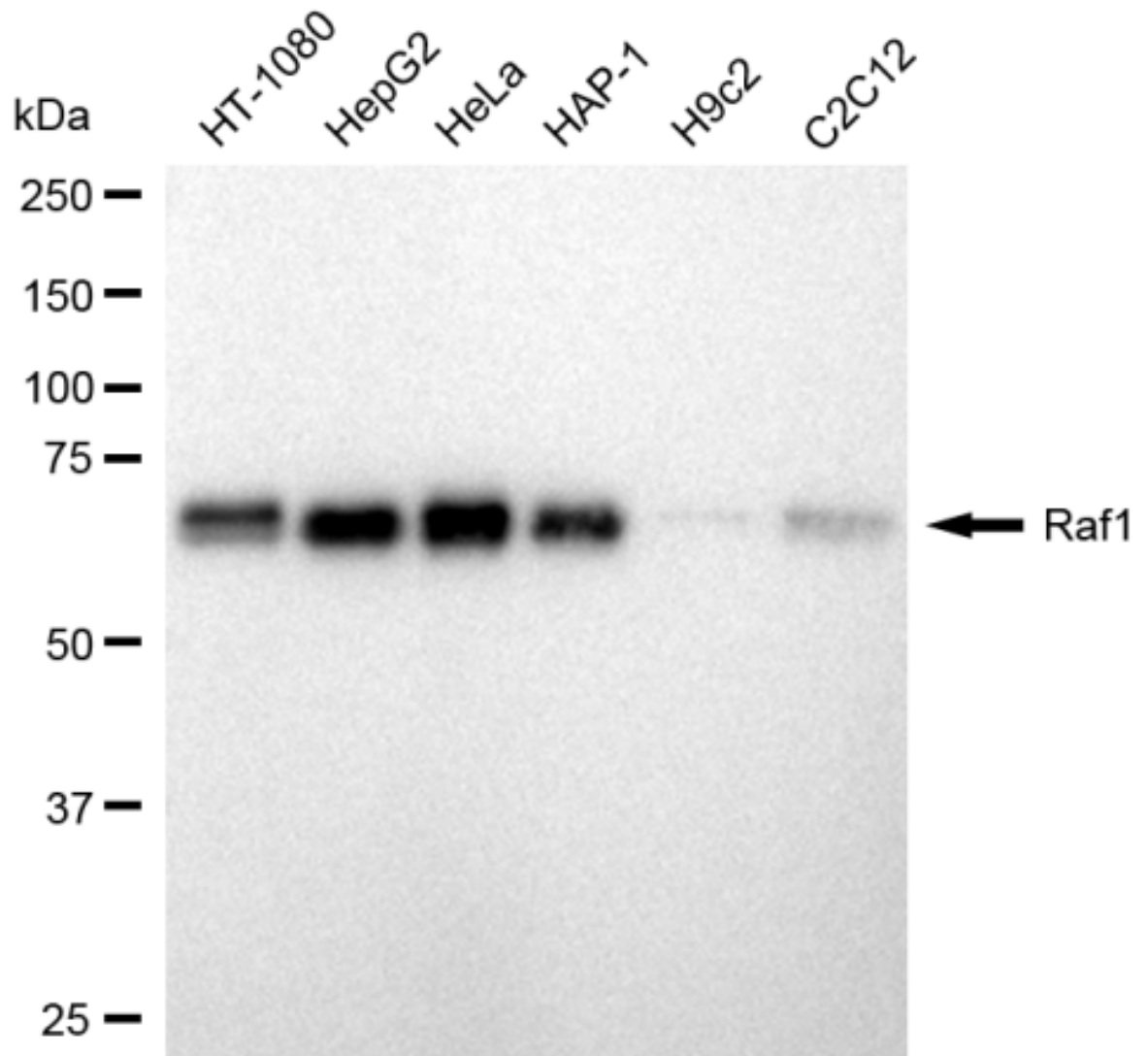
For general and specific antibody protocols please visit our website. Read all instructions before using this product.



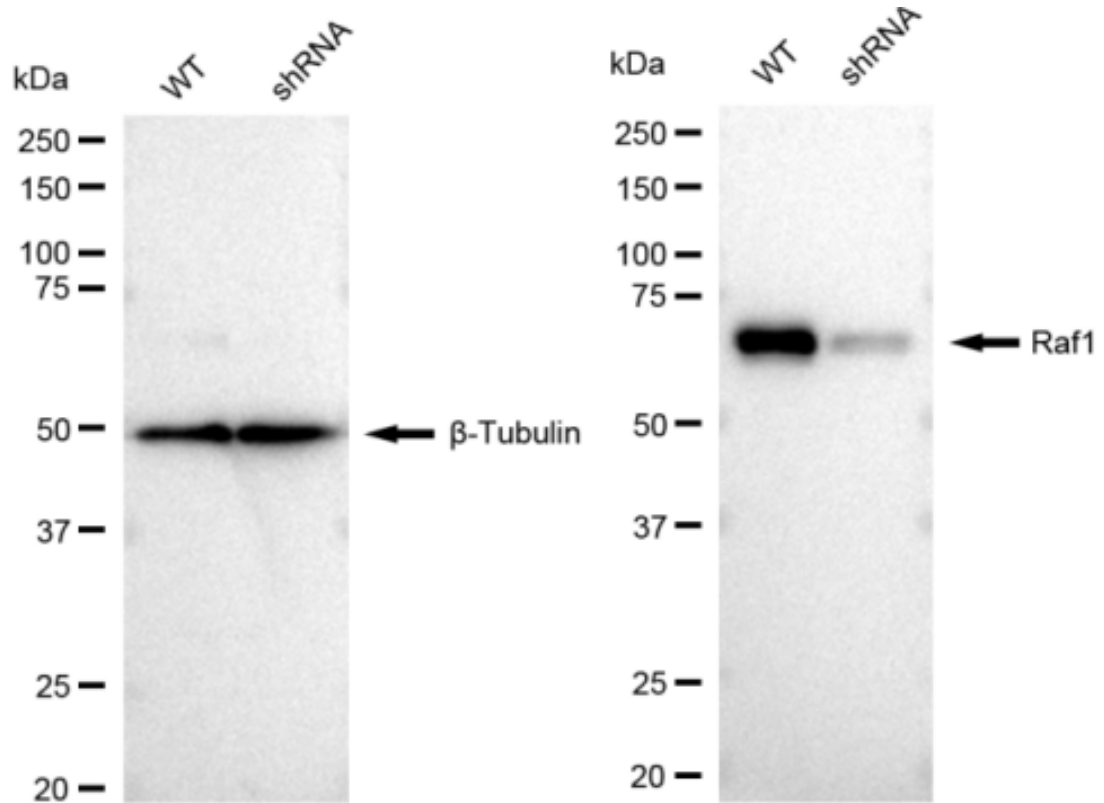
Flow cytometric analysis of Raf1 expression in HeLa cells using Raf1 antibody 1:2,000. Green, isotype control; red, Raf1.



Immunocytochemical staining of HeLa cells with Raf1 antibody 1:1,000. Nuclei were stained blue with DAPI; Raf1 was stained magenta with Alexa Fluor® 647. Images were taken using Leica stellaris 5. Protein abundance based on laser Intensity and smart gain: Medium. Scale bar: 20 μ m.



Western blotting analysis using anti-Raf1 antibody 1:5,000 and HRP-conjugated goat anti-rabbit secondary antibody 1:20,000 respectively. Image was developed using FeQ™ ECL Substrate Kit .



Western blotting analysis using anti-Raf1 antibody 1:5,000 and HRP-conjugated goat anti-rabbit secondary antibody 1:20,000 respectively. Image was developed using FeQ™ ECL Substrate Kit .