



SunLong Biotech Co.,LTD
Tel: 0086-571- 56623320 Fax:0086-571- 56623318
E-mail:sales@sunlongbiotech.com
www.sunlongbiotech.com

[KD-Validated] Anti-Phospho-Raf1 (S621) Rabbit Monoclonal Antibody

Cat No.: KD-10773

Aliases:

RAF1; Raf-1 Proto-Oncogene, Serine/Threonine Kinase; Raf-1; CRAF; RAF Proto-Oncogene Serine/Threonine-Protein Kinase; V-Raf-1 Murine Leukemia Viral Oncogene Homolog 1; C-Raf Proto-Oncogene, Serine/Threonine Kinase; Proto-Oncogene C-RAF; EC 2.7.11.1; C-Raf; V-Raf-1 Murine Leukemia Viral Oncogene-Like Protein 1; Raf Proto-Oncogene Serine/Threonine Protein Kinase; Oncogene RAF1; EC 2.7.11; CMD1NN; C-RAF; RAF-1; CRaf; NS5; RAF

Background:

UniProt Entry: [P04049](#);NCBI Gene Entry: [5894](#)

Application Information

Molecular Weight: Predicted, 73 kDa, observed, 73 kDa Clonality: Rabbit monoclonal antibody Clone ID: 23GB2650 Species Reactivity: Human, Mouse, Rat Applications Tested: Western Blotting (WB), Flow Cytometry (FCM), Immunocytochemistry (IC)

Immunogen

A synthesized peptide derived from human Phospho-Raf1 (S621)

Isotype

Rabbit IgG

Storage Buffer

Supplied in PBS (pH 7.4) containing 50% glycerol, and 0.02% sodium azide.

Storage

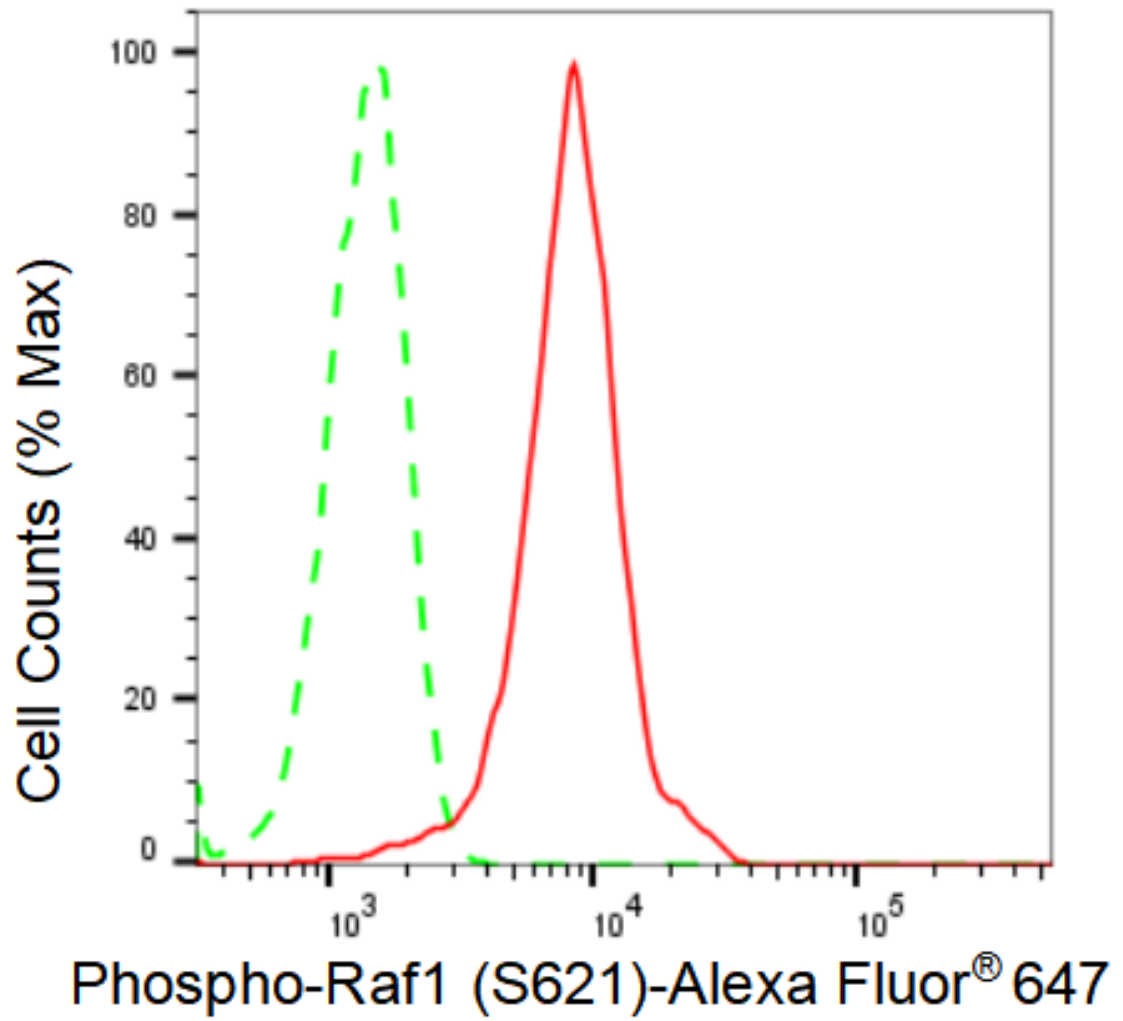
Store at -20 °C for one year.

Recommended Dilutions

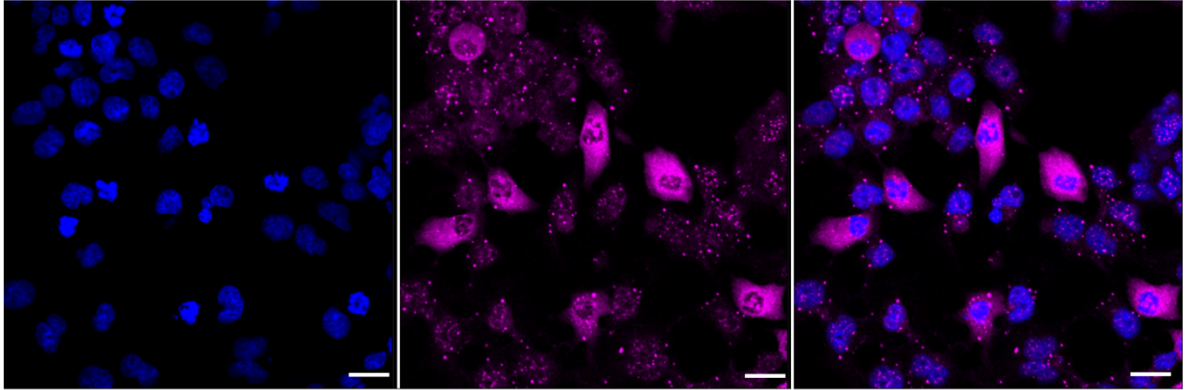
Western Blotting (WB): 1:1,000-1:5,000 Flow Cytometry (FCM): 1:2,000
Immunocytochemistry (IC): 1:1,000

Protocols

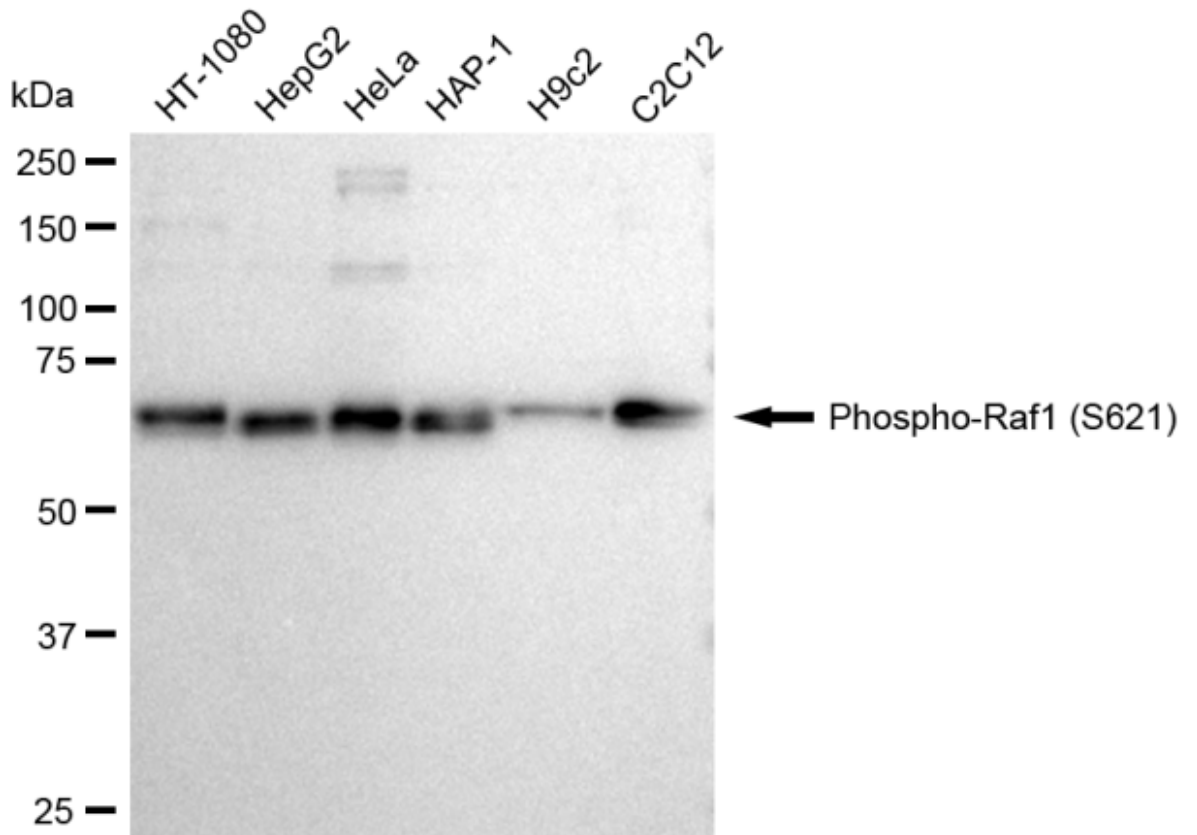
For general and specific antibody protocols please visit our website. Read all instructions before using this product.



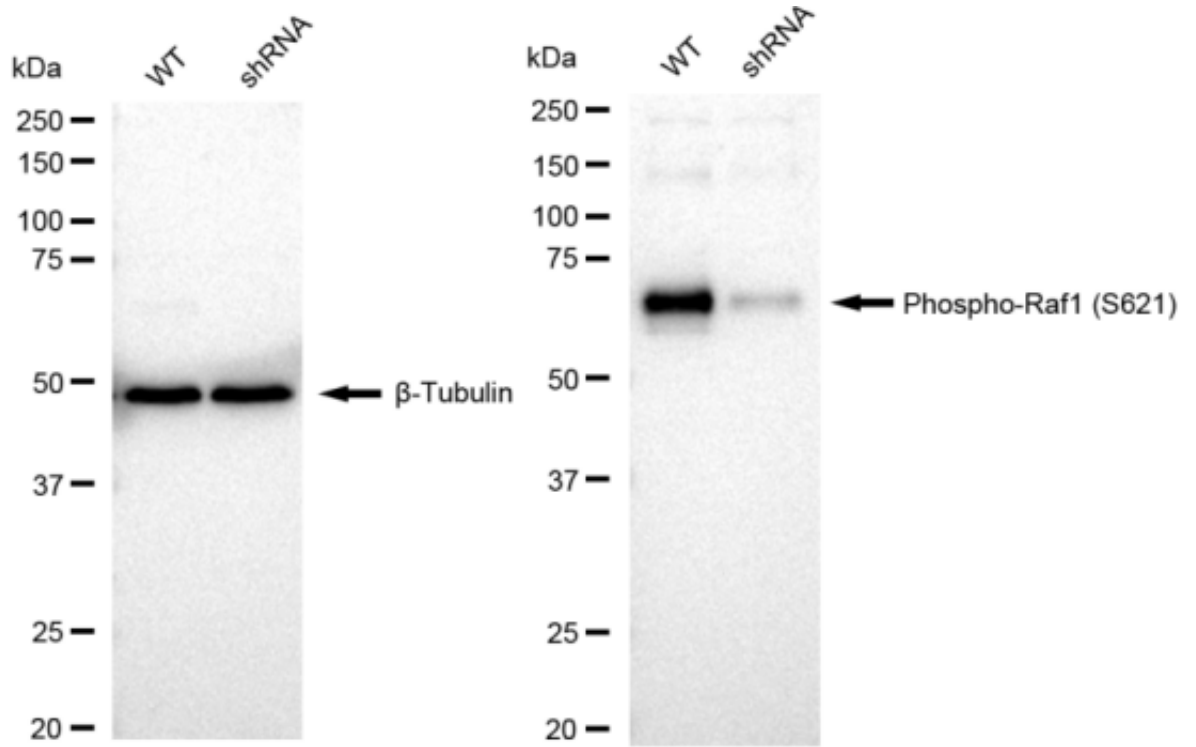
Flow cytometric analysis of Phospho-Raf1 (S621) expression in HeLa cells using Phospho-Raf1 (S621) antibody 1:2,000. Green, isotype control; red, Phospho-Raf1 (S621).



Immunocytochemical staining of HeLa cells with Phospho-Raf1 (S621) antibody 1:1,000. Nuclei were stained blue with DAPI; Phospho-Raf1 (S621) was stained magenta with Alexa Fluor® 647. Images were taken using Leica stellaris 5. Protein abundance based on laser Intensity and smart gain: High. Scale bar: 20 μ m.



Western blotting analysis using anti-Phospho-Raf1 (S621) antibody 1:5,000 and HRP-conjugated goat anti-rabbit secondary antibody 1:20,000 respectively. Image was developed using FeQ™ ECL Substrate Kit .



Western blotting analysis using anti-Phospho-Raf1 (S621) antibody 1:5000 and HRP-conjugated goat anti-rabbit secondary antibody 1:20000 respectively. Image was developed using FeQ™ ECL Substrate Kit .