



SunLong Biotech Co.,LTD  
Tel: 0086-571- 56623320 Fax:0086-571- 56623318  
E-mail:sales@sunlongbiotech.com  
www.sunlongbiotech.com

## [KD-Validated] Anti-RAD23A Rabbit Monoclonal Antibody

Cat No.: KD-10768

### Aliases:

RAD23 Homolog A, Nucleotide Excision Repair Protein; HHR23A; UV Excision Repair Protein RAD23 Homolog A; RAD23, Yeast Homolog, A; MGC111083; HR23A; RAD23 (S. Cerevisiae) Homolog A; RAD23 Homolog A (S. Cerevisiae)

### Background:

UniProt Entry: [P54725](#);NCBI Gene Entry: [5886](#)

### Application Information

Molecular Weight: Predicted, 40 kDa, observed, 55 kDa Clonality: Rabbit monoclonal antibody Clone ID: 24GB1080 Species Reaceivity: Human, Mouse Applicseions Tsted: Western Blotting (WB), Flow Cytometry (FCM), Immunocytochemistry (IC)

### Immunogen

A synthesized peptide derived from human RAD23A

### Isotype

Rabbit IgG

### Storage Buffer

Supplied in PBS (pH 7.4) containing 50% glycerol, and 0.02% sodium azide.

### Storage

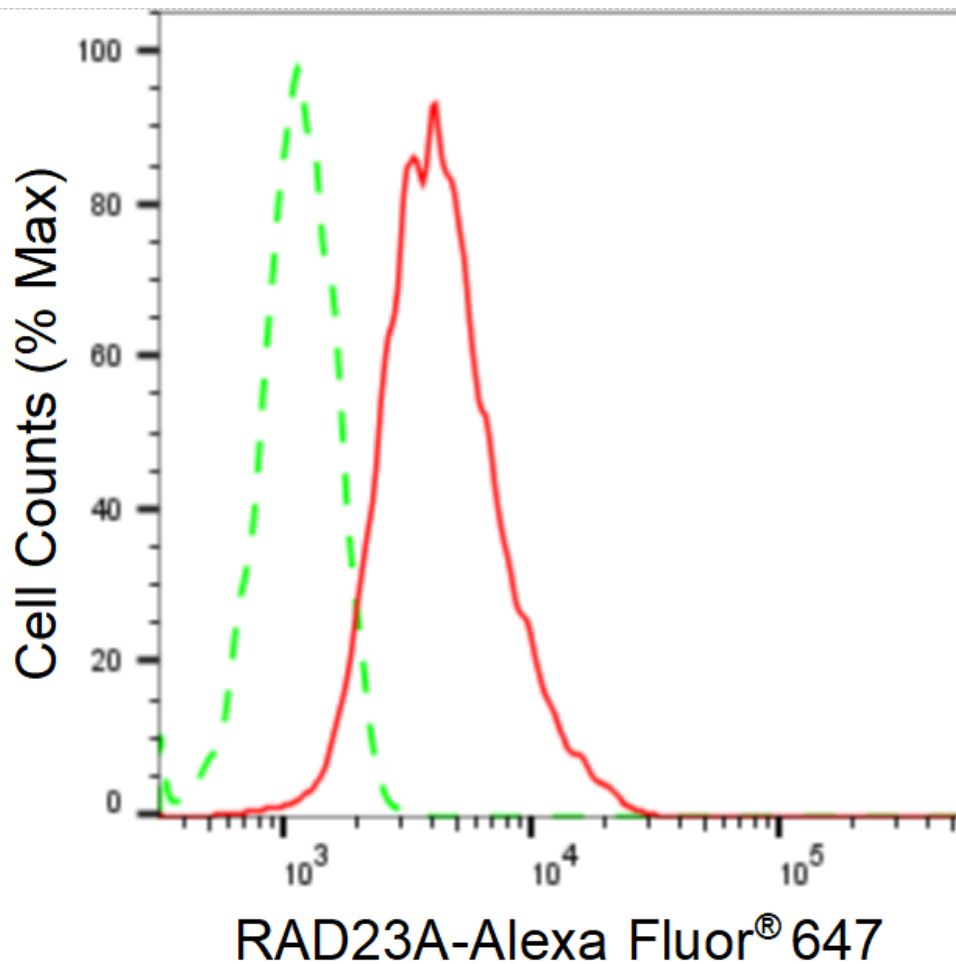
Store at -20 °C for one year.

### Recommended Dilutions

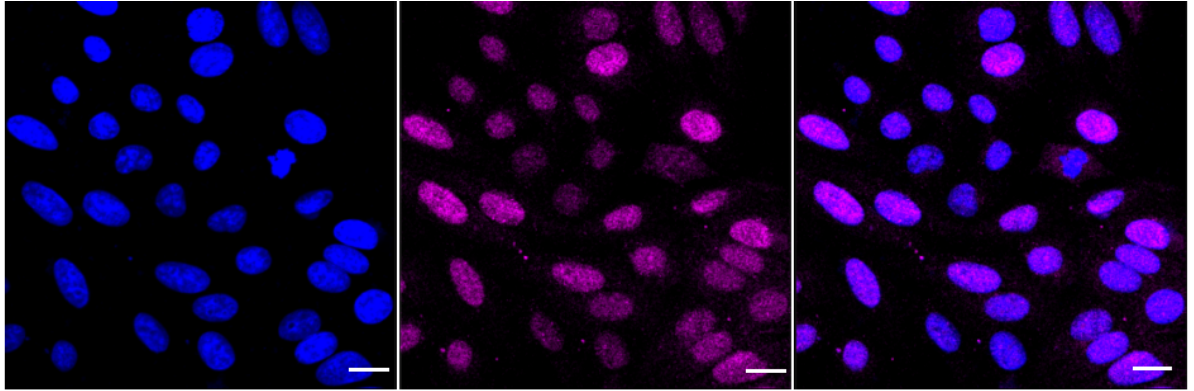
Western Blotting (WB): 1:1,000-1:5,000 Flow Cytometry (FCM): 1:2,000  
Immunocytochemistry (IC): 1:1,000

### Protocols

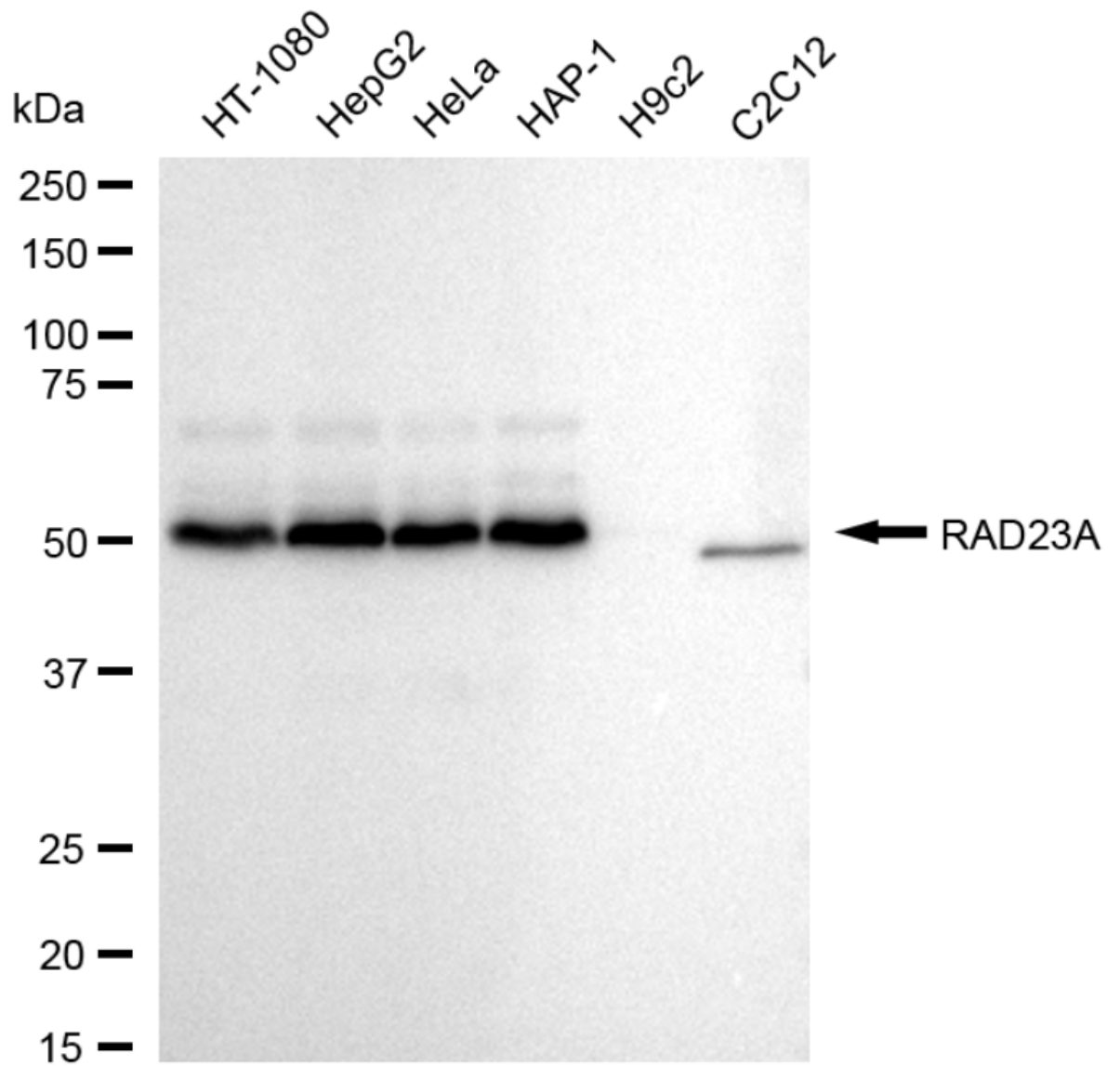
For general and specific antibody protocols please visit our website. Read all instructions before using this product.



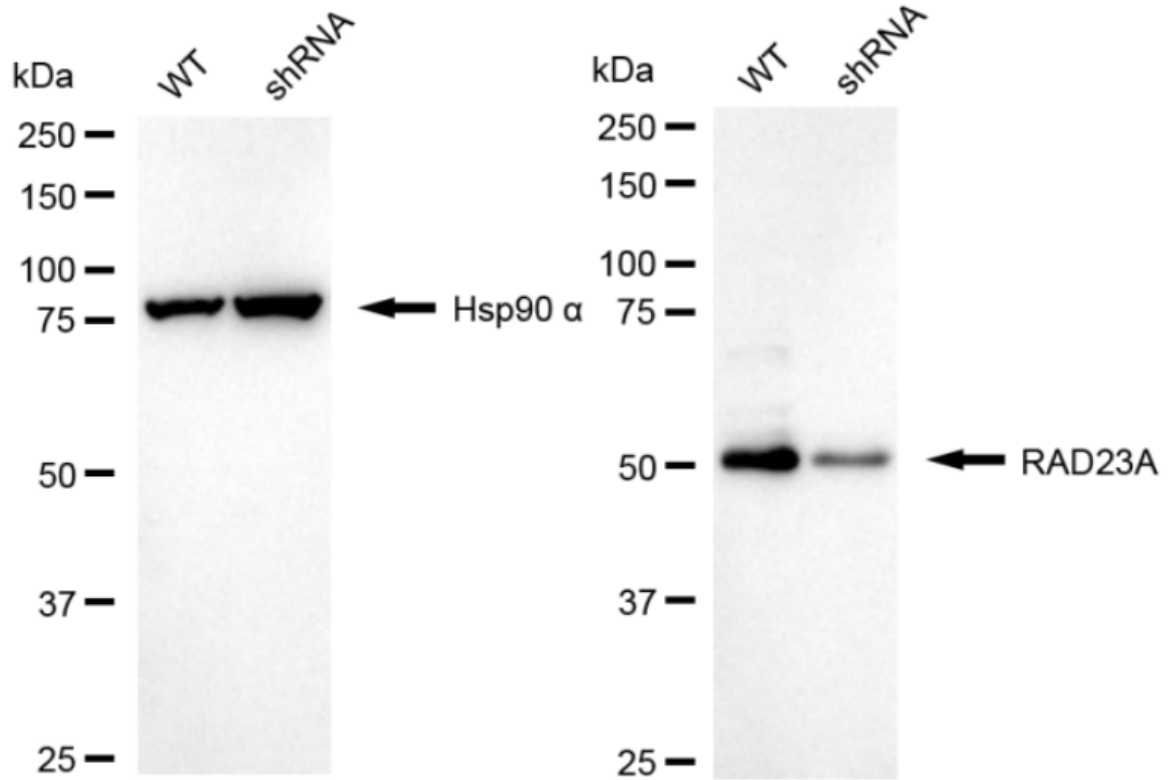
Flow cytometric analysis of RAD23A expression in HepG2 cells using anti-RAD23A antibody 1:2,000. Green, isotype control; red, RAD23A.



Immunocytochemical staining of HepG2 cells with anti-RAD23A antibody 1:1,000. Nuclei were stained blue with DAPI; RAD23A was stained magenta with Alexa Fluor® 647. Images were taken using Leica stellaris 5. Protein abundance based on laser Intensity and smart gain: Medium. Scale bar: 20  $\mu\text{m}$ .



Western blotting analysis using anti-RAD23A antibody 1:5,000 and HRP-conjugated goat anti-rabbit secondary antibody 1:20,000 respectively. Image was developed using FeQ™ ECL Substrate Kit .



Western blotting analysis using anti-RAD23A antibody 1:5,000 and HRP-conjugated goat anti-rabbit secondary antibody 1:20,000 respectively. Image was developed using NaQ™ ECL Substrate Kit .