



SunLong Biotech Co.,LTD
Tel: 0086-571- 56623320 Fax:0086-571- 56623318
E-mail:sales@sunlongbiotech.com
www.sunlongbiotech.com

[KD-Validated] Anti-RAD21 Cohesin Complex Component Rabbit Monoclonal Antibody

Cat No.: KD-10767

Aliases:

RAD21; RAD21 Cohesin Complex Component; HHR21; SCC1; KIAA0078; Double-Strand-Break Repair Protein Rad21 Homolog; Sister Chromatid Cohesion 1; Nuclear Matrix Protein 1; SCC1 Homolog; Kleisin; NXP-1; HR21; NXP1; Protein Involved In DNA Double-Strand Break Repair; RAD21 (S. Pombe) Homolog; RAD21 Homolog (S. Pombe); RAD21 Homolog; HRAD21; CDLS4; MCD1; MGS

Background:

UniProt Entry: [O60216](#);NCBI Gene Entry: [5885](#)

Application Information

Molecular Weight: Predicted, 72 kDa, observed, 130 kDa Clonality: Rabbit monoclonal antibody Clone ID: 24GB1390 Species Reactivity: Human, Mouse, Rat Applications Tested: Western Blotting (WB), Flow Cytometry (FCM), Immunocytochemistry (IC)

Immunogen

A synthesized peptide derived from human RAD21

Isotype

Rabbit IgG

Storage Buffer

Supplied in PBS (pH 7.4) containing 50% glycerol, and 0.02% sodium azide.

Storage

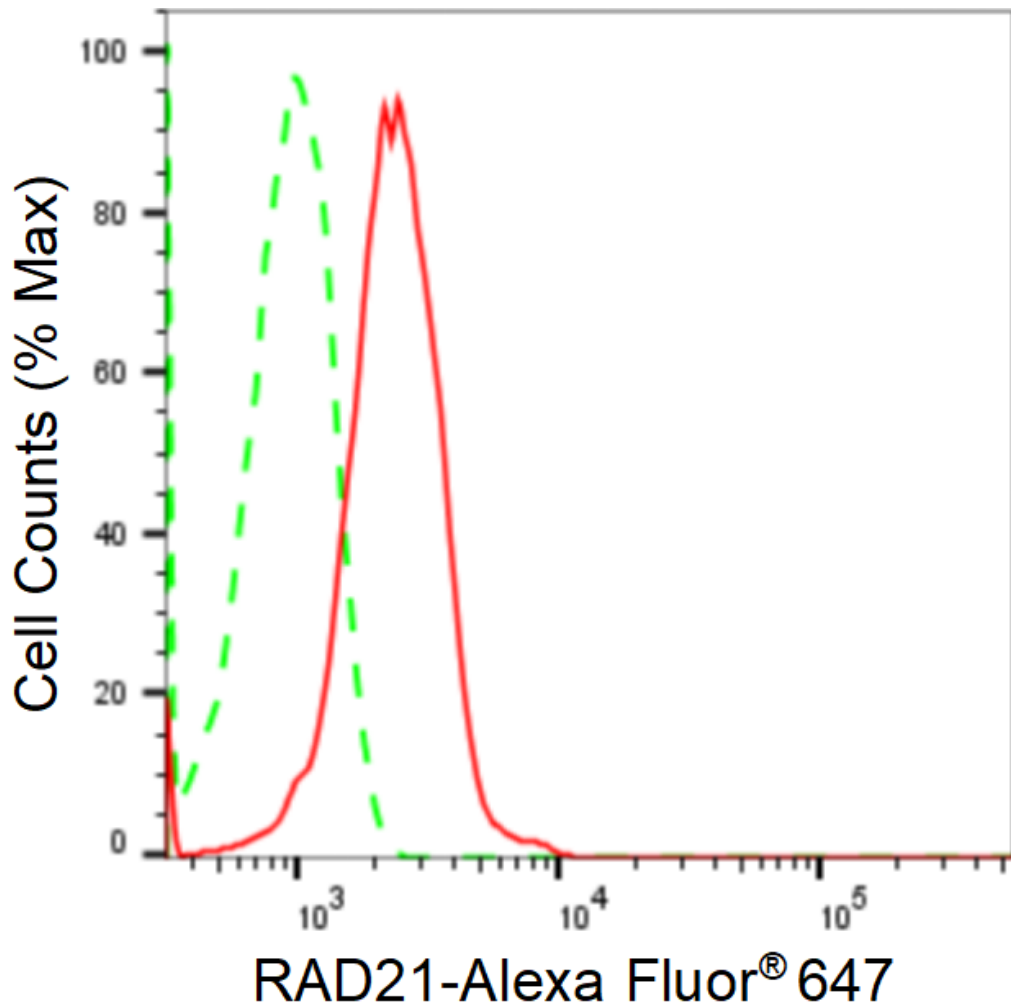
Store at -20 °C for one year.

Recommended Dilutions

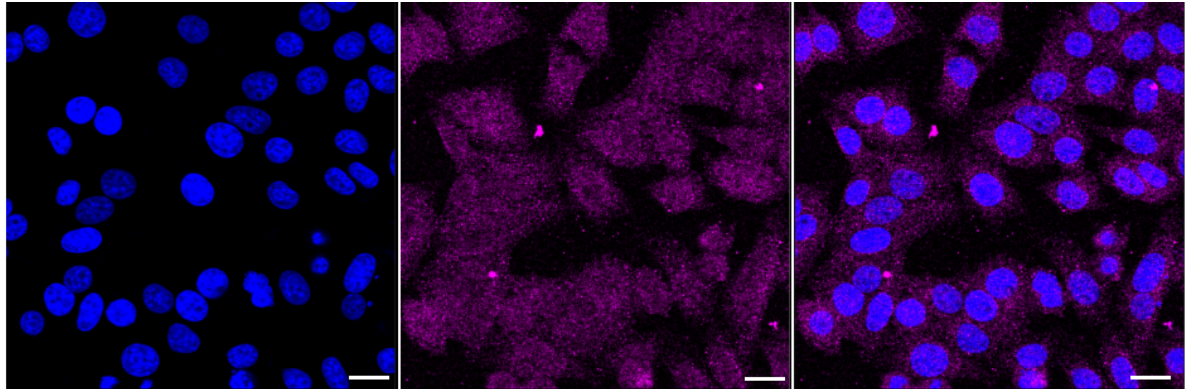
Western Blotting (WB): 1:1,000-1:5,000 Flow Cytometry (FCM): 1:2,000
Immunocytochemistry (IC): 1:1,000

Protocols

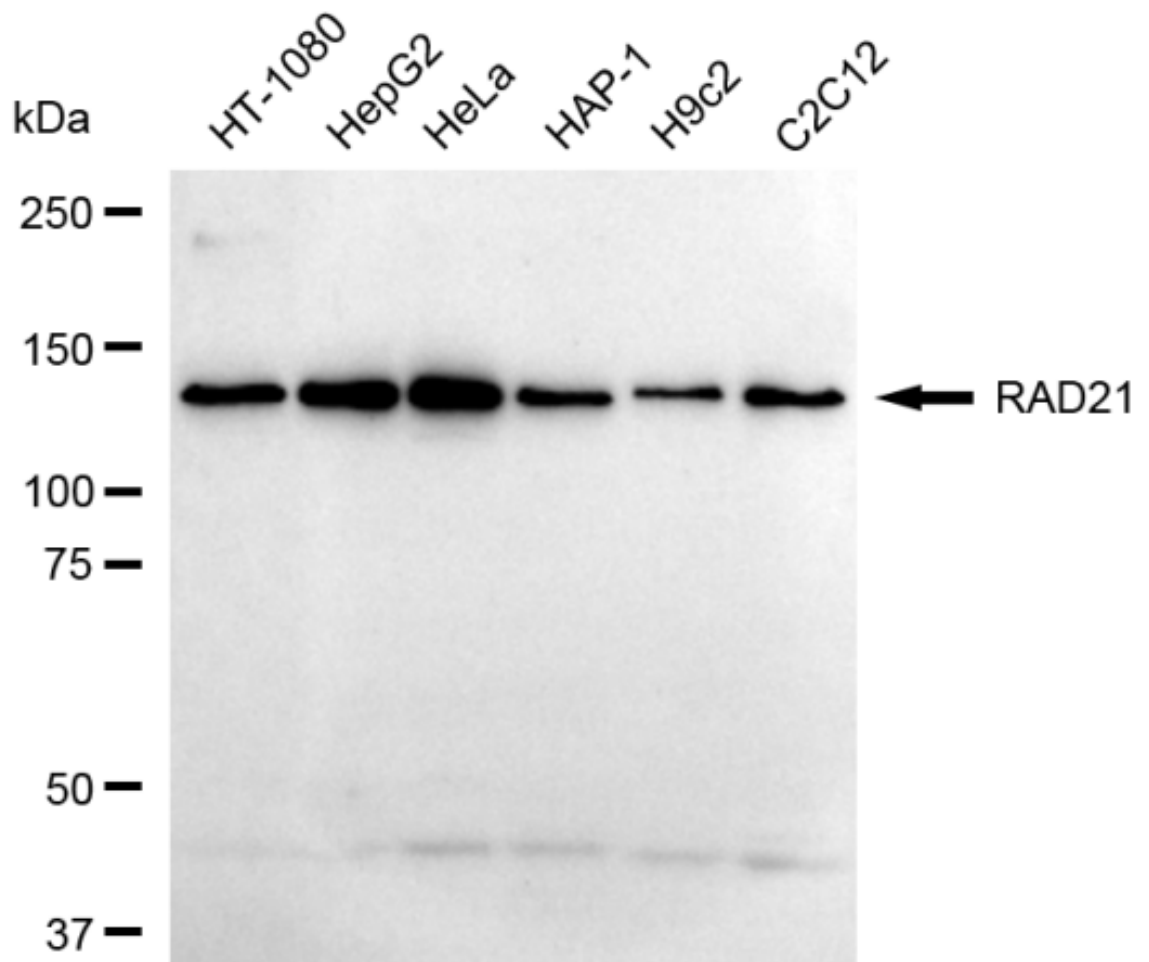
For general and specific antibody protocols please visit our website. Read all instructions before using this product.



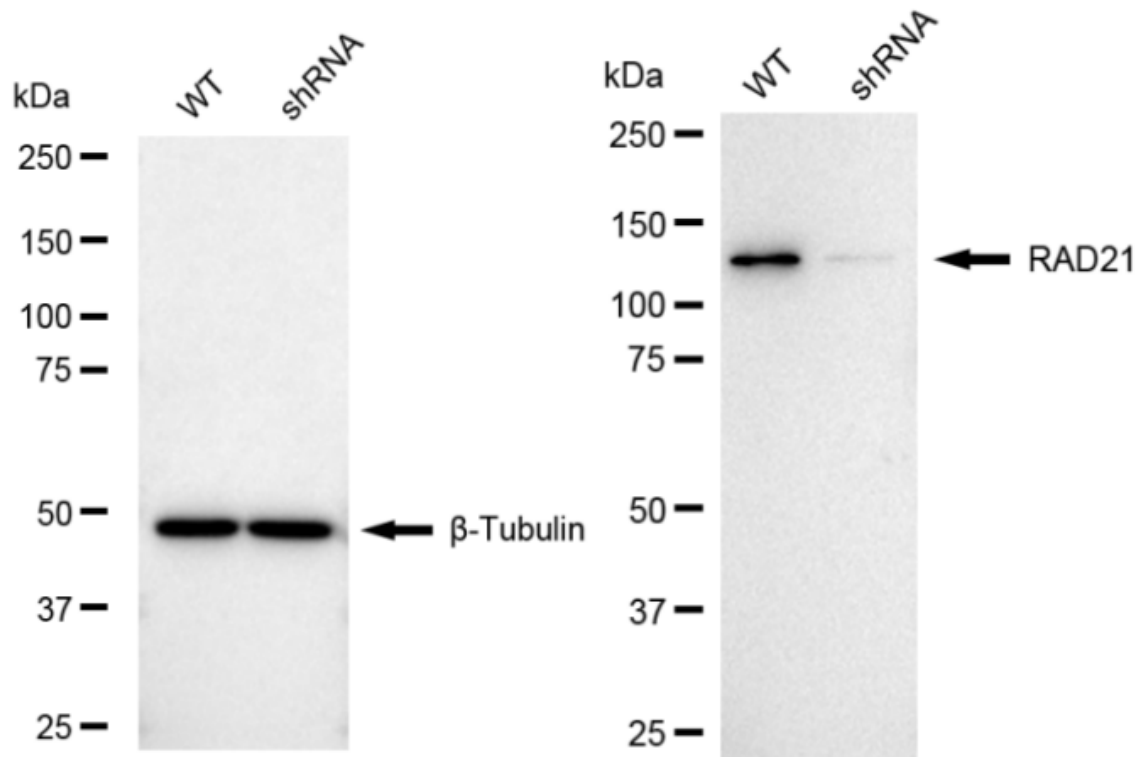
Flow cytometric analysis of RAD21 expression in HepG2 cells using anti-RAD21 antibody 1:2,000. Green, isotype control; red, RAD21.



Immunocytochemical staining of HepG2 cells with anti-RAD21 antibody 1:1,000. Nuclei were stained blue with DAPI; RAD21 was stained magenta with Alexa Fluor® 647. Images were taken using Leica stellaris 5. Protein abundance based on laser Intensity and smart gain: Medium. Scale bar: 20 μ m.



Western blotting analysis using anti-RAD21 antibody 1:5,000 and HRP-conjugated goat anti-rabbit secondary antibody 1:20,000 respectively. Image was developed using FeQ™ ECL Substrate Kit .



Western blotting analysis using anti-RAD21 antibody 1:5,000 and HRP-conjugated goat anti-rabbit secondary antibody 1:20,000 respectively. Image was developed using NaQ™ ECL Substrate Kit .