



SunLong Biotech Co.,LTD
Tel: 0086-571- 56623320 Fax:0086-571- 56623318
E-mail:sales@sunlongbiotech.com
www.sunlongbiotech.com

[KD-Validated] Anti-Phospho-Rad17 (S656) Rabbit Monoclonal Antibody

Cat No.: KD-10766

Aliases:

RAD17 Checkpoint Clamp Loader Component; RAD17Sp; Rad24; CCYC; Cell Cycle Checkpoint Protein RAD17; R24L; Cell Cycle Checkpoint Protein (RAD17); RAD17 Homolog (S. Pombe); RF-C Activator 1 Homolog; RF-C/Activator 1 Homolog; RAD1 (S. Pombe) Homolog; Rad17-Like Protein; RAD17 Homolog; RAD1 Homolog; HRAD17; HRad17

Background:

UniProt Entry: [O75943](#);NCBI Gene Entry: [5884](#)

Application Information

Molecular Weight: Predicted, 77 kDa, observed, 85 kDa Clonality: Rabbit monoclonal antibody Clone ID: 24GB795 Species Reaceivity: Human, Mouse Applicseions Tsted: Western Blotting (WB), Flow Cytometry (FCM)

Immunogen

A synthesized peptide derived from human Phospho-Rad17 (S656)

Isotype

Rabbit IgG

Storage Buffer

Supplied in PBS (pH 7.4) containing 50% glycerol, and 0.02% sodium azide.

Storage

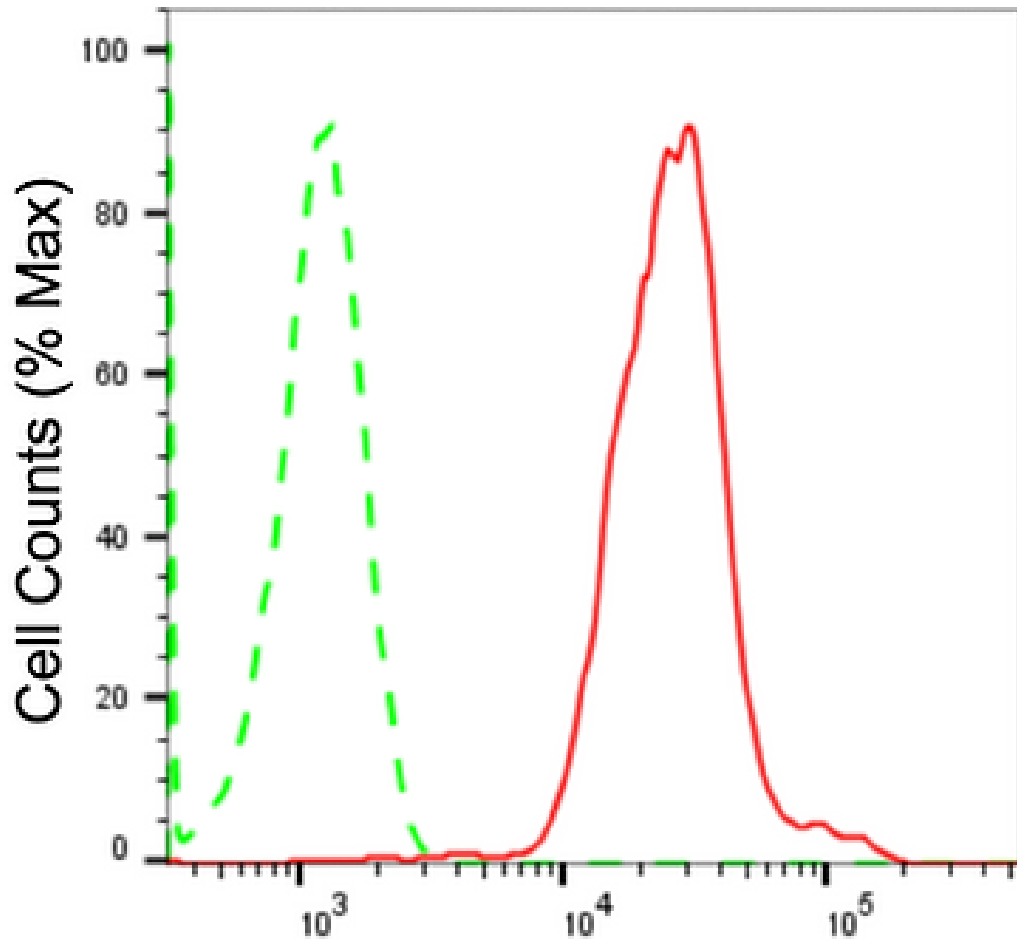
Store at -20 °C for one year.

Recommended Dilutions

Western Blotting (WB): 1:1,000-1:5,000 Flow Cytometry (FCM): 1:2,000

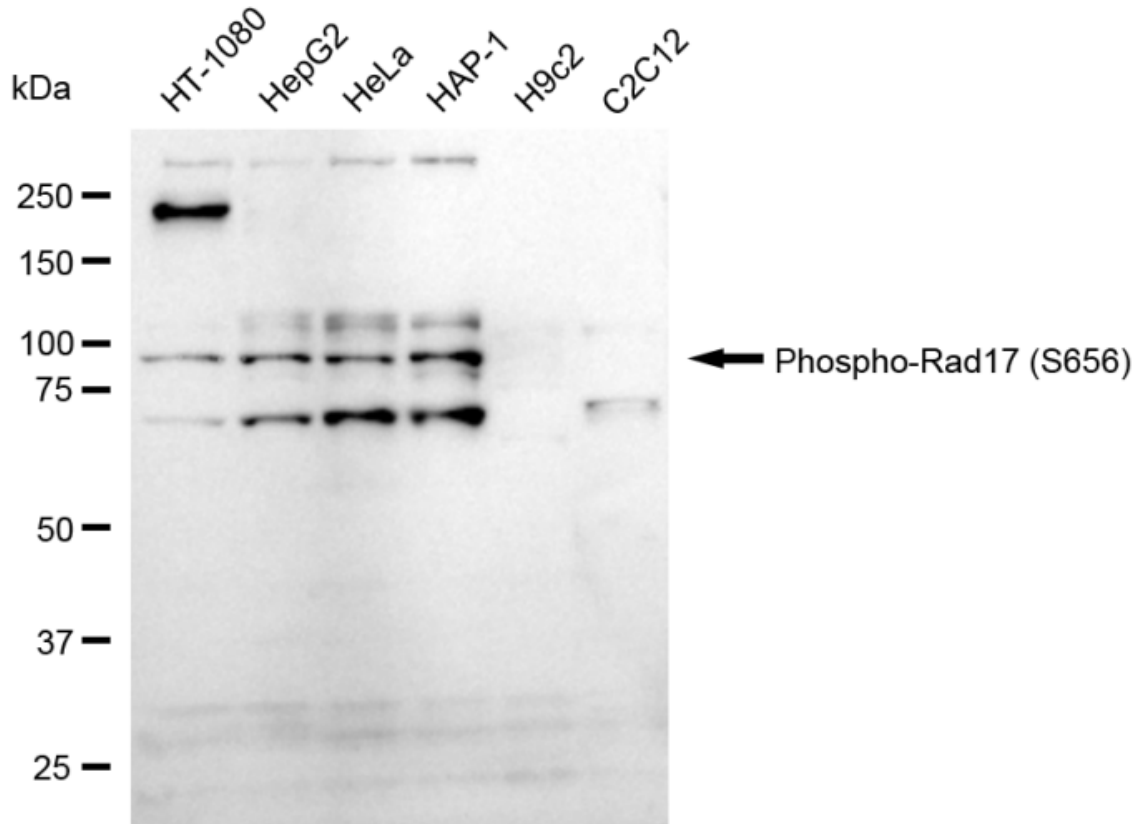
Protocols

For general and specific antibody protocols please visit our website. Read all instructions before using this product.

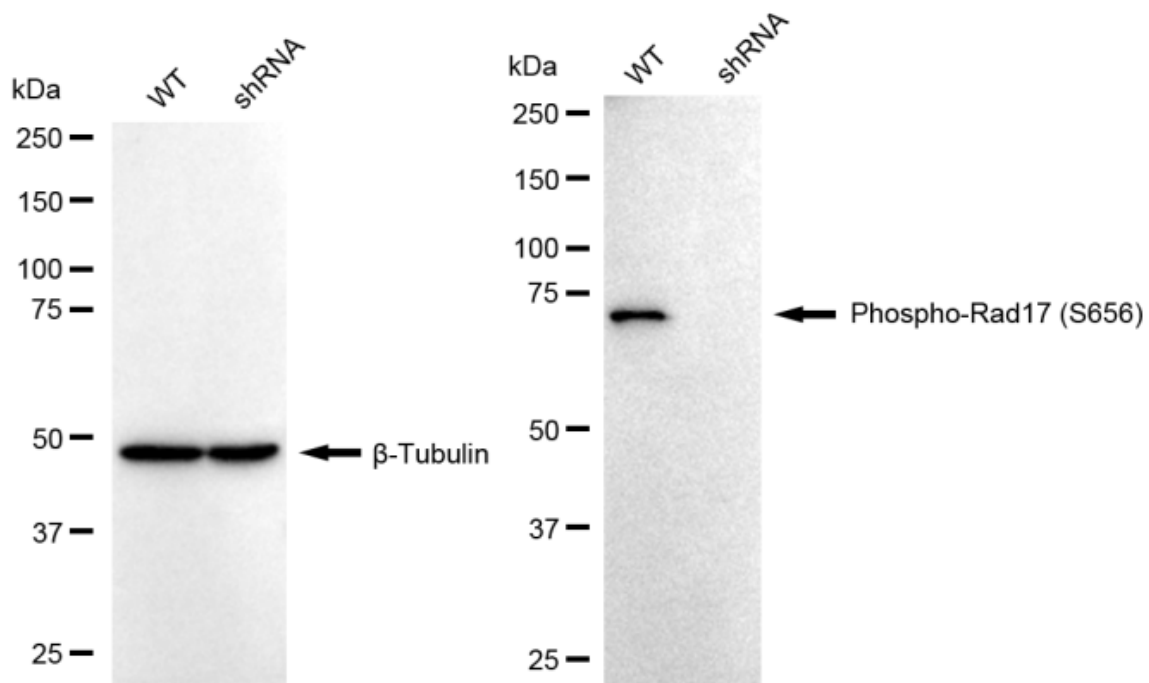


Phospho-Rad17 (S656)-Alexa Fluor® 647

Flow cytometric analysis of Phospho-Rad17 (S656) expression in HAP-1 cells using anti-Phospho-Rad17 (S656) antibody 1:2,000. Green, isotype control; red, Phospho-Rad17 (S656).



Western blotting analysis using anti-Phospho-Rad17 (S656) antibody 1:5,000 and HRP-conjugated goat anti-rabbit secondary antibody 1:20,000 respectively. Image was developed using FeQ™ ECL Substrate Kit .



Western blotting analysis using anti-phospho-Rad17 (S656) antibody 1:5,000 and HRP-conjugated goat anti-rabbit secondary antibody 1:20,000 respectively. Image was developed using NaQ™ ECL Substrate Kit .