



SunLong Biotech Co.,LTD  
Tel: 0086-571- 56623320 Fax:0086-571- 56623318  
E-mail:sales@sunlongbiotech.com  
www.sunlongbiotech.com

## **[KD-Validated] Anti-RACK1 Rabbit Monoclonal Antibody**

Cat No.: KD-10765

### **Aliases:**

RACK1; Receptor For Activated C Kinase 1; GNB2L1; H12.3; Guanine Nucleotide Binding Protein (G Protein), Beta Polypeptide 2-Like 1; Guanine Nucleotide-Binding Protein Subunit Beta-Like Protein 12.3; Guanine Nucleotide-Binding Protein Subunit Beta-2-Like 1; Cell Proliferation-Inducing Gene 21 Protein ; Receptor Of Activated Protein C Kinase 1; Small Ribosomal Subunit Protein RACK1; Human Lung Cancer Oncogene 7 Protein ; Gnb2-Rs1; HLC-7; Protein Homologous To Chicken B Complex Protein, Guanine Nucleotide Binding; Guanine Nucleotide Binding Protein Beta Polypeptide 2-Like 1; Receptor Of Activated Protein Kinase C 1; Receptor For Activated C Kinase; Proliferation-Inducing Gene 21; Lung Cancer Oncogene 7; GNB2-RS1; PIG21

### **Background:**

UniProt Entry: [PKD-10452](#);NCBI Gene Entry: [10399](#)

### **Application Information**

Molecular Weight: Predicted, 35 kDa, observed, 35 kDa Clonality: Rabbit monoclonal antibody Clone ID: 23GB2355 Species Reactivity: Human, Mouse, Rat Applications Tested: Western Blotting (WB), Flow Cytometry (FCM), Immunocytochemistry (IC)

### **Immunogen**

A synthesized peptide derived from human RACK1

### **Isotype**

Rabbit IgG

**Storage Buffer**

Supplied in PBS (pH 7.4) containing 50% glycerol, and 0.02% sodium azide.

**Storage**

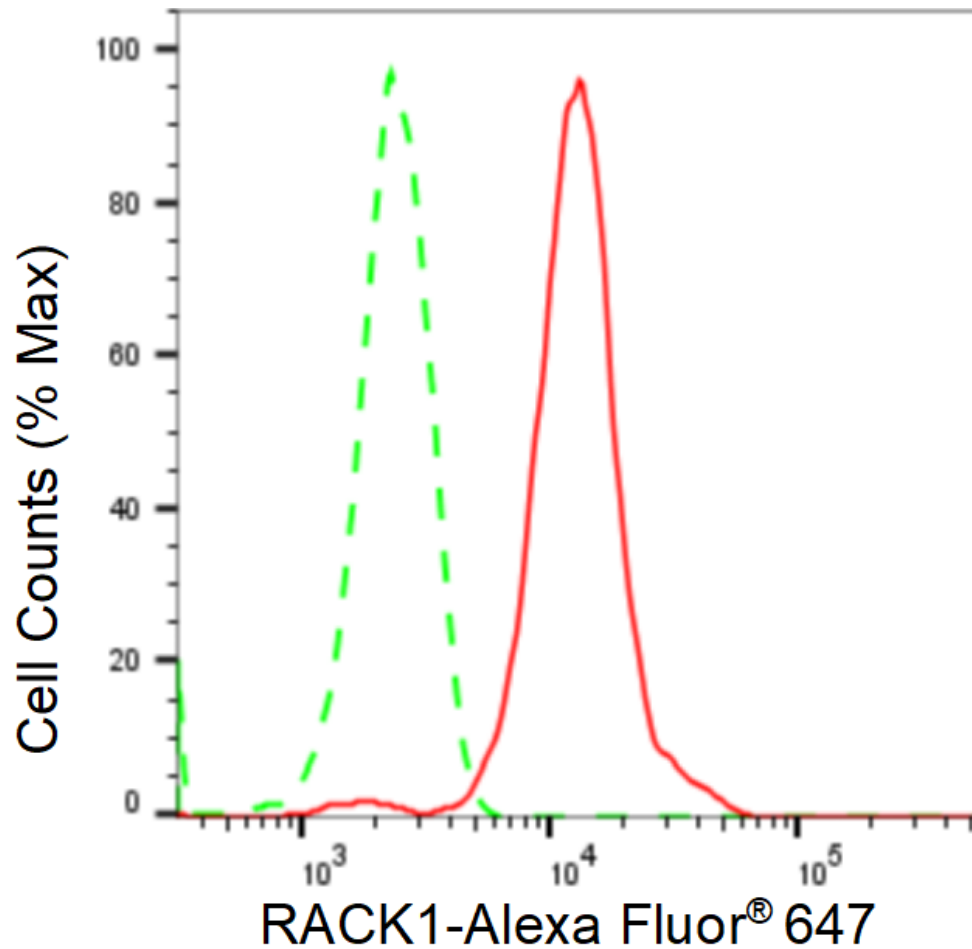
Store at -20 °C for one year.

**Recommended Dilutions**

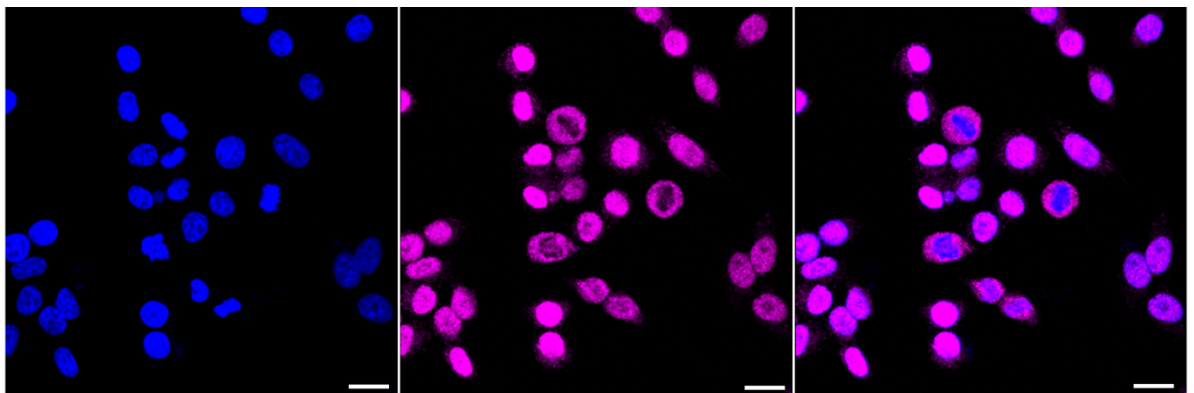
Western Blotting (WB): 1:1,000-1:5,000 Flow Cytometry (FCM): 1:2,000  
Immunocytochemistry (IC): 1:1,000

**Protocols**

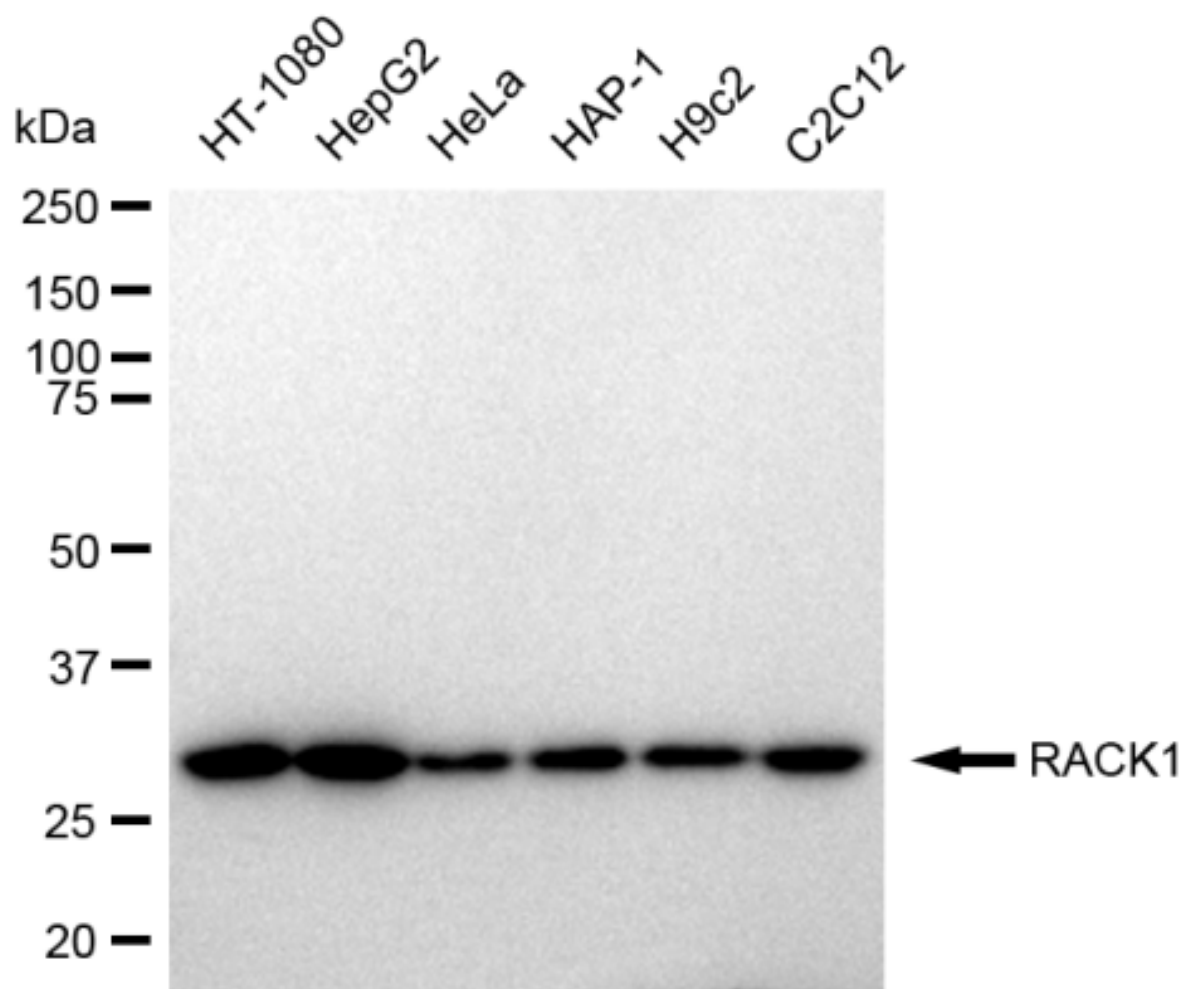
For general and specific antibody protocols please visit our website. Read all instructions before using this product.



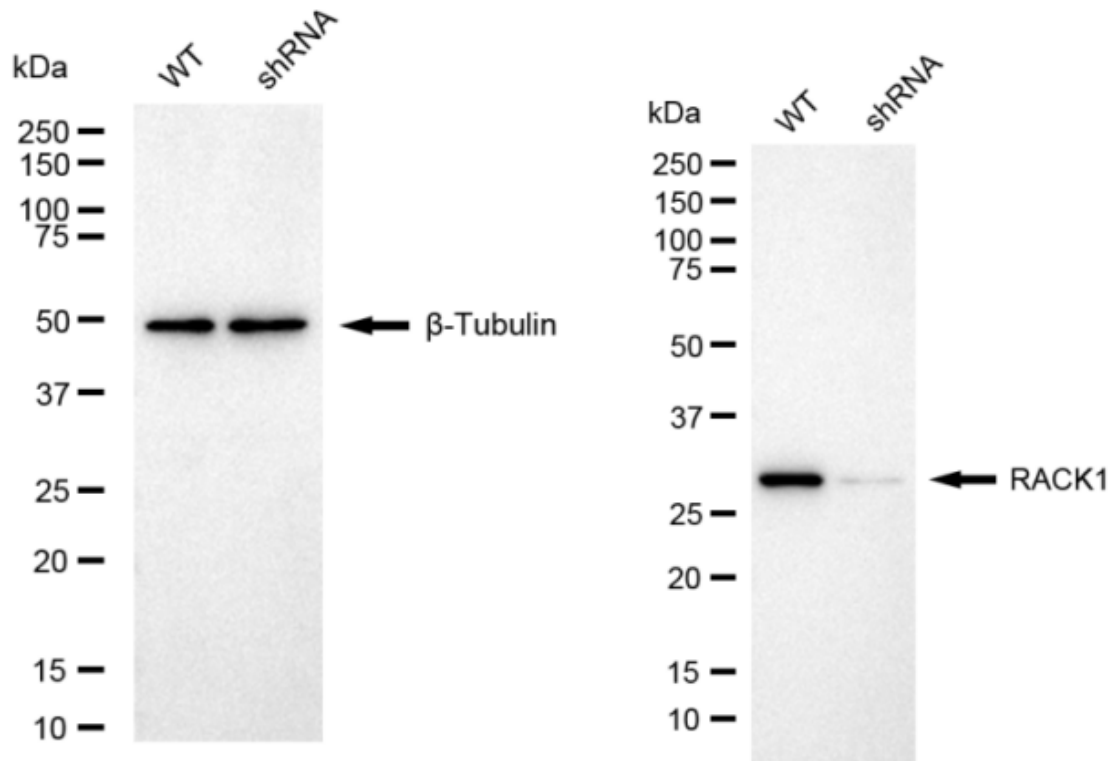
Flow cytometric analysis of RACK1 expression in HepG2 cells using RACK1 antibody 1:2,000. Green, isotype control; red, RACK1.



Immunocytochemical staining of HepG2 cells with RACK1 antibody 1:1,000. Nuclei were stained blue with DAPI; RACK1 was stained magenta with Alexa Fluor® 647. Images were taken using Leica stellaris 5. Protein abundance based on laser Intensity and smart gain: Medium. Scale bar: 20  $\mu$ m.



Western blotting analysis using anti-RACK1 antibody 1:5,000 and HRP-conjugated goat anti-rabbit secondary antibody 1:20,000 respectively. Image was developed using FeQ™ ECL Substrate Kit .



Western blotting analysis using anti-RACK1 antibody 1:5,000 and HRP-conjugated goat anti-rabbit secondary antibody 1:20,000 respectively. Image was developed using NaQ™ ECL Substrate Kit .