



SunLong Biotech Co.,LTD
Tel: 0086-571- 56623320 Fax:0086-571- 56623318
E-mail:sales@sunlongbiotech.com
www.sunlongbiotech.com

[KD-Validated] Anti-Rab9 Rabbit Monoclonal Antibody

Cat No.: KD-10762

Aliases:

RAB9A; RAB9A, Member RAS Oncogene Family; RAB9; RAB9, Member RAS Oncogene Family; Ras-Related Protein Rab-9A

Background:

UniProt Entry: [P51151](#);NCBI Gene Entry: [9367](#)

Application Information

Molecular Weight: Predicted, 23 kDa, observed, 23 kDa Clonality: Rabbit monoclonal antibody Clone ID: 23GB1940 Species Reactivity: Human, Mouse, Rat Applications Tested: Western Blotting (WB), Flow Cytometry (FCM), Immunocytochemistry (IC)

Immunogen

A synthesized peptide derived from human Rab9

Isotype

Rabbit IgG

Storage Buffer

Supplied in PBS (pH 7.4) containing 50% glycerol, and 0.02% sodium azide.

Storage

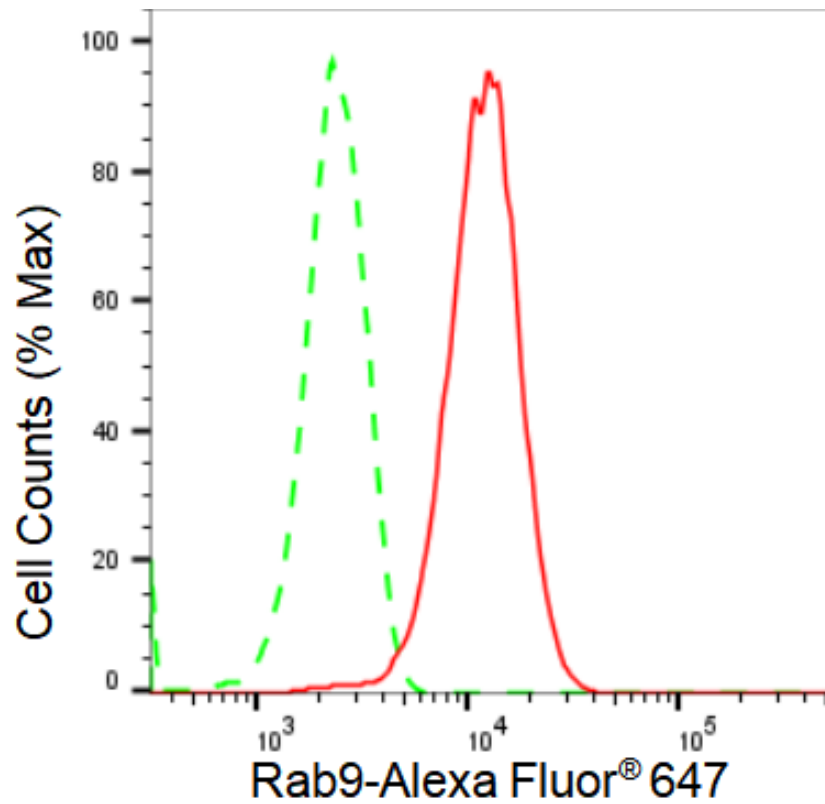
Store at -20 °C for one year.

Recommended Dilutions

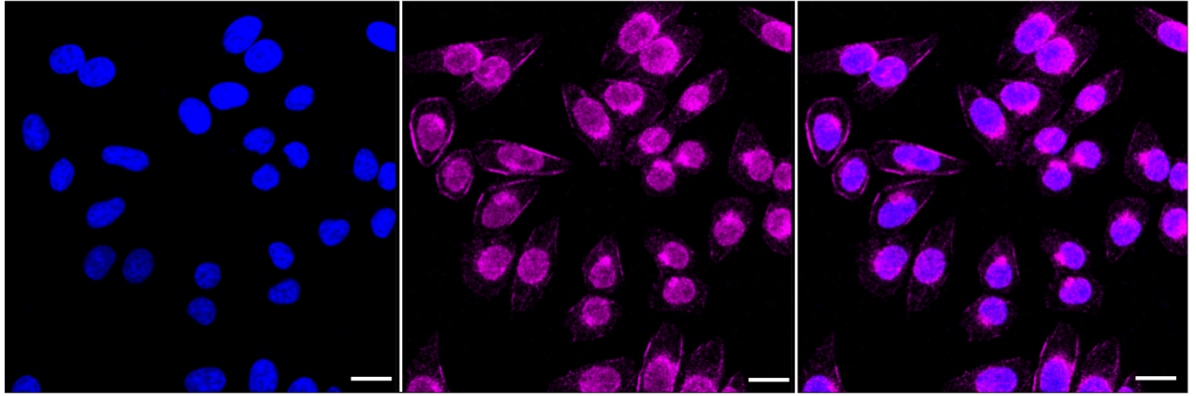
Western Blotting (WB): 1:1,000-1:5,000 Flow Cytometry (FCM): 1:2,000
Immunocytochemistry (IC): 1:1,000

Protocols

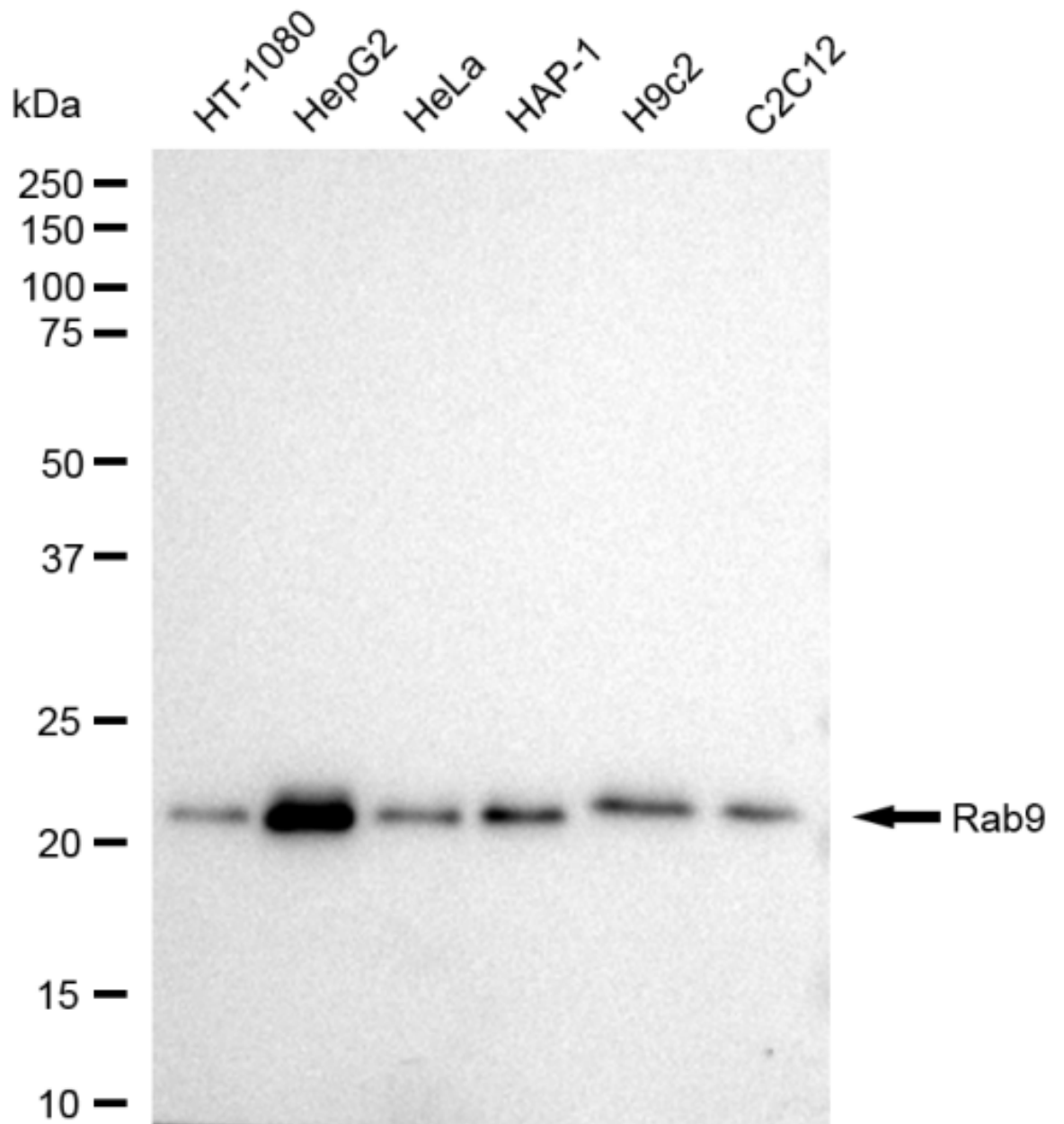
For general and specific antibody protocols please visit our website. Read all instructions before using this product.



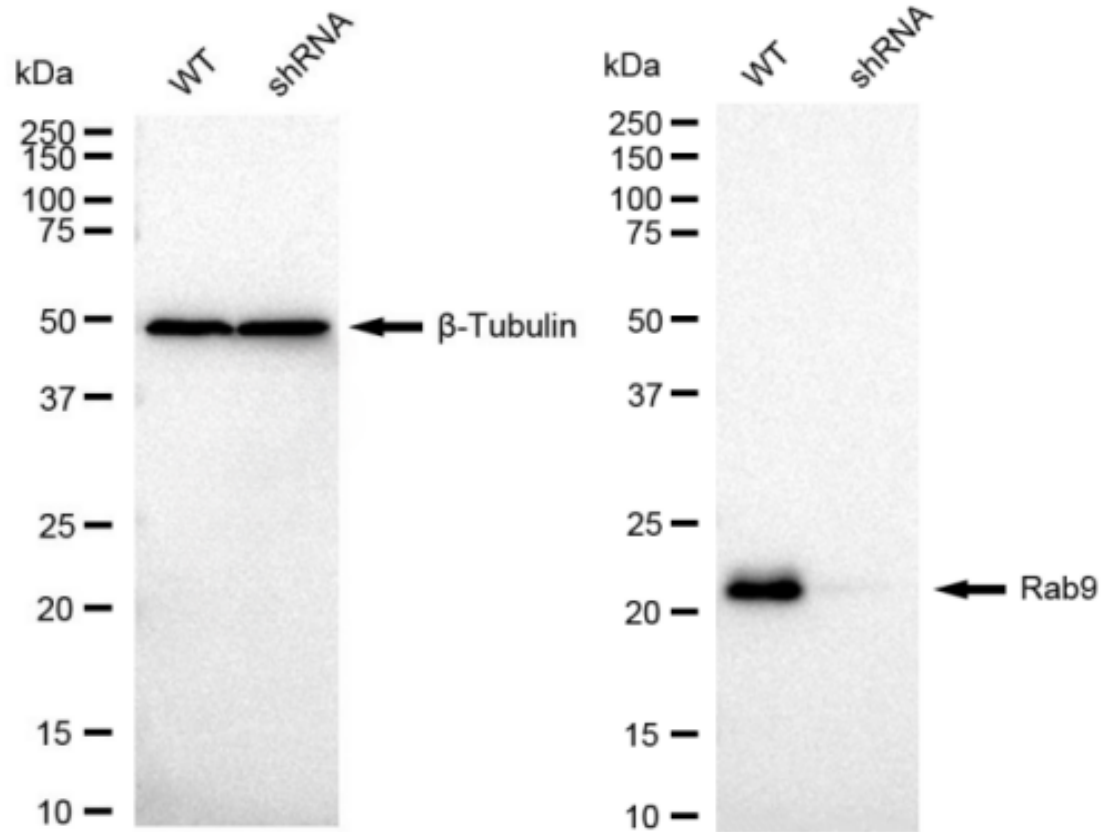
Flow cytometric analysis of Rab9 expression in HepG2 cells using Rab9 antibody 1:2,000. Green, isotype control; red, Rab9.



Immunocytochemical staining of HepG2 cells with Rab9 antibody 1:1,000. Nuclei were stained blue with DAPI; Rab9 was stained magenta with Alexa Fluor® 647. Images were taken using Leica stellaris 5. Protein abundance based on laser Intensity and smart gain: Medium. Scale bar: 20 μm .



Western blotting analysis using anti-Rab9 antibody 1:5,000 and HRP-conjugated goat anti-rabbit secondary antibody 1:20,000 respectively. Image was developed using FeQ™ ECL Substrate Kit .



Western blotting analysis using anti-Rab9 antibody 1:5,000 and HRP-conjugated goat anti-rabbit secondary antibody 1:20,000 respectively. Image was developed using FeQ™ ECL Substrate Kit .