



SunLong Biotech Co.,LTD
Tel: 0086-571- 56623320 Fax:0086-571- 56623318
E-mail:sales@sunlongbiotech.com
www.sunlongbiotech.com

[KD-Validated] Anti-RAB7 Rabbit Monoclonal Antibody

Cat No.: KD-10761

Aliases:

RAB7A, Member RAS Oncogene Family; RAB7; RAB7, Member RAS Oncogene Family; Ras-Related Protein Rab-7a; CMT2B; Charcot-Marie-Tooth Neuropathy 2B; Ras-Associated Protein RAB7; EC 3.6.5.2; PRO2706

Background:

UniProt Entry: [P51149](#);NCBI Gene Entry: [7879](#)

Application Information

Molecular Weight: Predicted, 23 kDa, observed, 23 kDa Clonality: Rabbit monoclonal antibody Clone ID: 24GB895 Species Reactivity: Human, Mouse, Rat Applications Tested: Western Blotting (WB), Flow Cytometry (FCM)

Immunogen

A synthesized peptide derived from human RAB7

Isotype

Rabbit IgG

Storage Buffer

Supplied in PBS (pH 7.4) containing 50% glycerol, and 0.02% sodium azide.

Storage

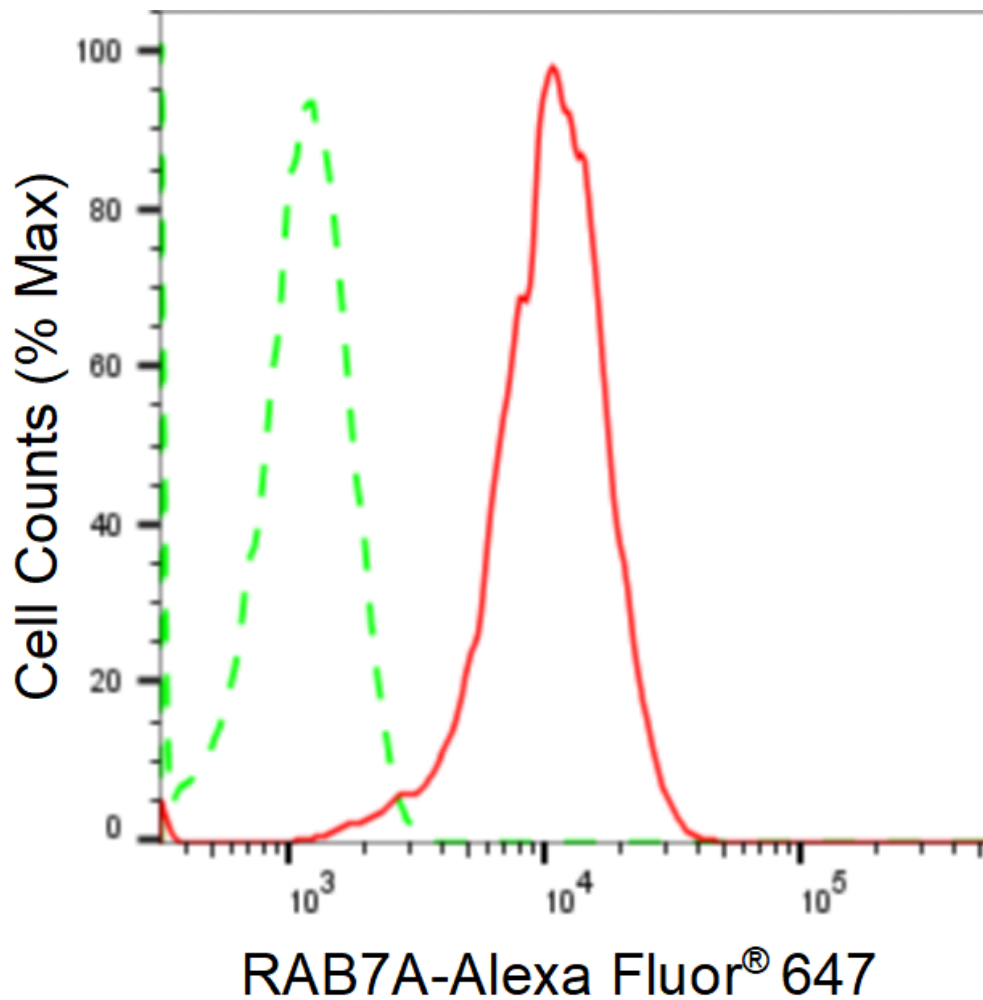
Store at -20 °C for one year.

Recommended Dilutions

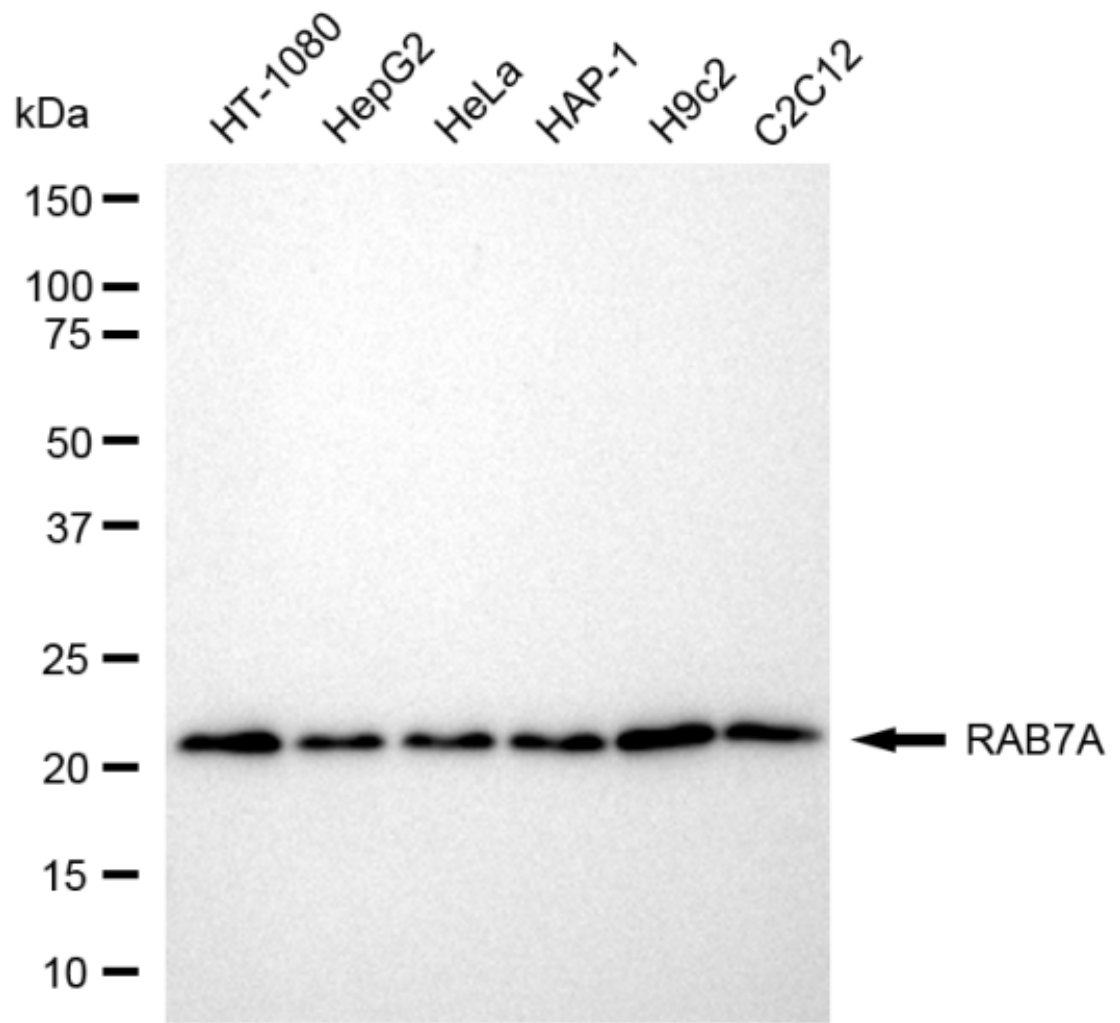
Western Blotting (WB): 1:1,000-1:5,000 Flow Cytometry (FCM): 1:2,000

Protocols

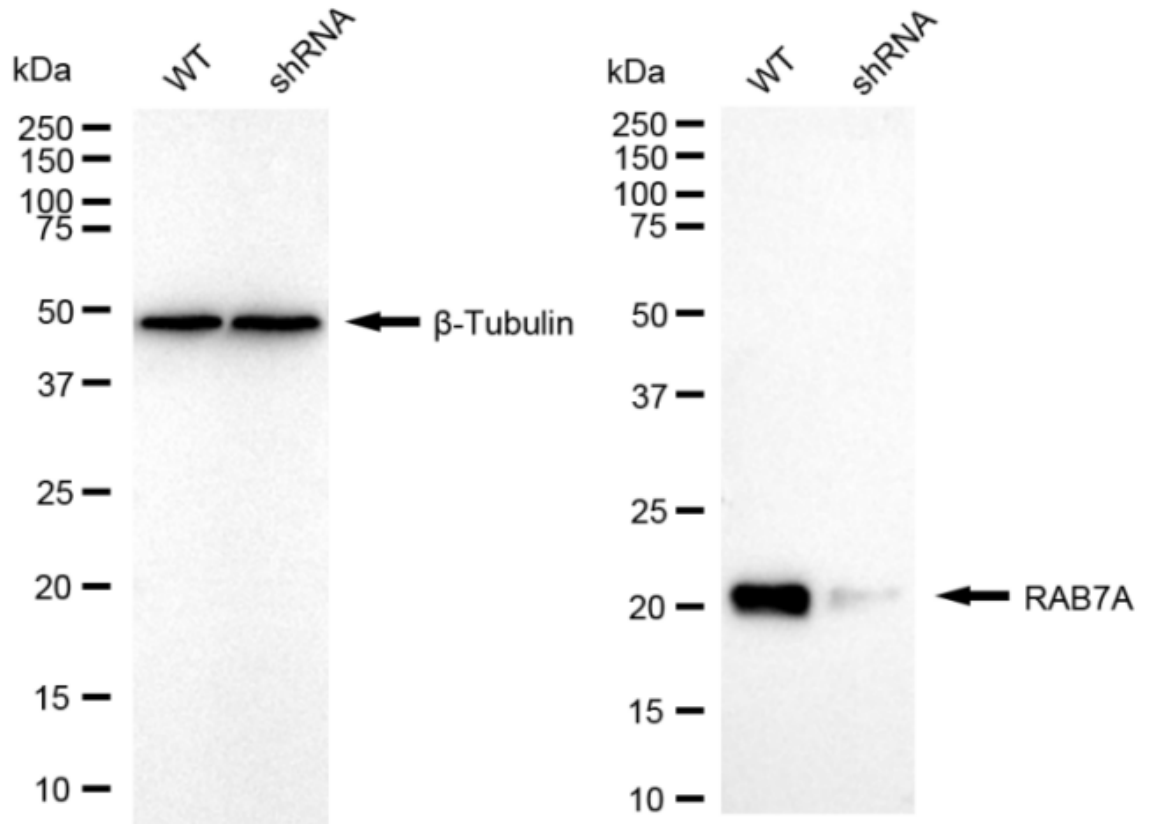
For general and specific antibody protocols please visit our website. Read all instructions before using this product.



Flow cytometric analysis of RAB7A expression in H9c2 cells using anti-RAB7A antibody 1:2,000. Green, isotype control; red, RAB7A.



Western blotting analysis using anti-RAB7A antibody 1:5,000 and HRP-conjugated goat anti-rabbit secondary antibody 1:20,000 respectively. Image was developed using FeQ™ ECL Substrate Kit .



Western blotting analysis using anti-RAB7A antibody 1:5,000 and HRP-conjugated goat anti-rabbit secondary antibody 1:20,000 respectively. Image was developed using NaQ™ ECL Substrate Kit .