



SunLong Biotech Co.,LTD  
Tel: 0086-571- 56623320 Fax:0086-571- 56623318  
E-mail:sales@sunlongbiotech.com  
www.sunlongbiotech.com

## **[KD-Validated] Anti-RAB5A Rabbit Monoclonal Antibody**

Cat No.: KD-10759

### **Aliases:**

RAB5A; RAB5A, Member RAS Oncogene Family; RAB5; RAS-Associated Protein RAB5A; Ras-Related Protein Rab-5A; EC 3.6.5.2

### **Background:**

UniProt Entry: [P20339](#);NCBI Gene Entry: [5868](#)

### **Application Information**

Molecular Weight: Predicted, 24 kDa, observed, 24 kDa Clonality: Rabbit monoclonal antibody Clone ID: 24GB4520 Species Reactivity: Human, Mouse, Rat Applications Tested: Western Blotting (WB), Flow Cytometry (FCM)

### **Immunogen**

A synthesized peptide derived from human Rab5

### **Isotype**

Rabbit IgG

### **Storage Buffer**

Supplied in PBS (pH 7.4) containing 50% glycerol, and 0.02% sodium azide.

### **Storage**

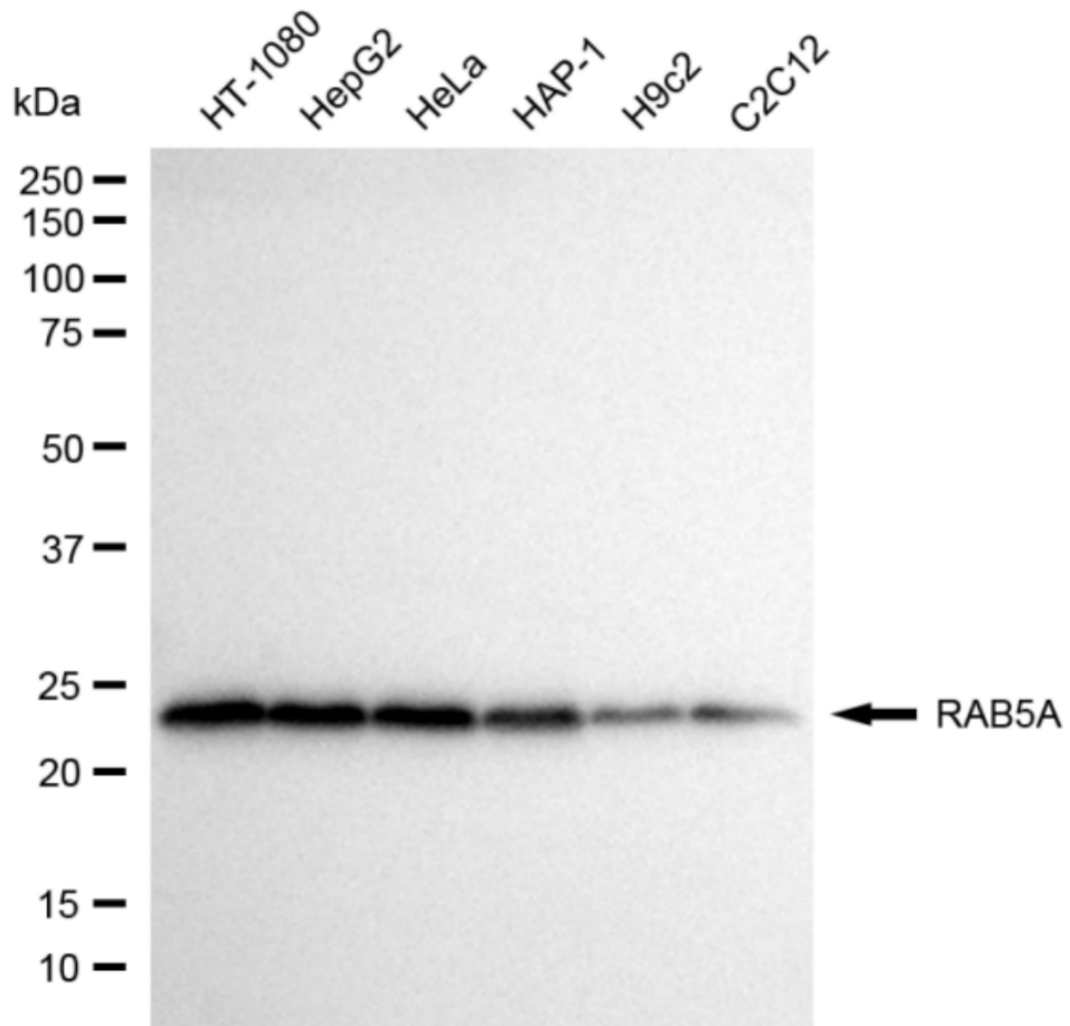
Store at -20 °C for one year.

### Recommended Dilutions

Western Blotting (WB): 1:1,000-1:5,000 Flow Cytometry (FCM): 1:2,000

### Protocols

For general and specific antibody protocols please visit our website. Read all instructions before using this product.



Western blotting analysis using anti-RAB5A antibody 1:5,000 and HRP-conjugated goat anti-rabbit secondary antibody 1:20,000 respectively. Image was developed using NaQ™ ECL Substrate Kit 1:5,000 and HRP-conjugated goat anti-rabbit secondary antibody

1:20,000 respectively. Image was developed using NaQ™ ECL Substrate Kit 1:2,000.  
Green, isotype control; red, RAB5A.