



SunLong Biotech Co.,LTD
Tel: 0086-571- 56623320 Fax:0086-571- 56623318
E-mail:sales@sunlongbiotech.com
www.sunlongbiotech.com

[KD-Validated] Anti-QKI Rabbit Monoclonal Antibody

Cat No.: KD-10757

Aliases:

QKI; QKI, KH Domain Containing RNA Binding; QK3; KH Domain-Containing RNA-Binding Protein QKI; Hqkl; Hqk; Homolog Of Mouse Quaking QKI (KH Domain RNA Binding Protein); Quaking Homolog, KH Domain RNA Binding (Mouse); Quaking Homolog, KH Domain RNA Binding; QKI/LOC100132735 Fusion; RNA Binding Protein HQK; Protein Quaking; QK1; HKQ; QK

Background:

UniProt Entry: [Q96PU8](#);NCBI Gene Entry: [9444](#)

Application Information

Molecular Weight: Predicted, 38 kDa, observed, 38 kDa Clonality: Rabbit monoclonal antibody Clone ID: 23GB4595 Species Reactivity: Human, Mouse, Rat Applications Tested: Western Blotting (WB), Flow Cytometry (FCM), Immunocytochemistry (IC)

Immunogen

A synthesized peptide derived from human QK1

Isotype

Rabbit IgG

Storage Buffer

Supplied in PBS (pH 7.4) containing 50% glycerol, and 0.02% sodium azide.

Storage

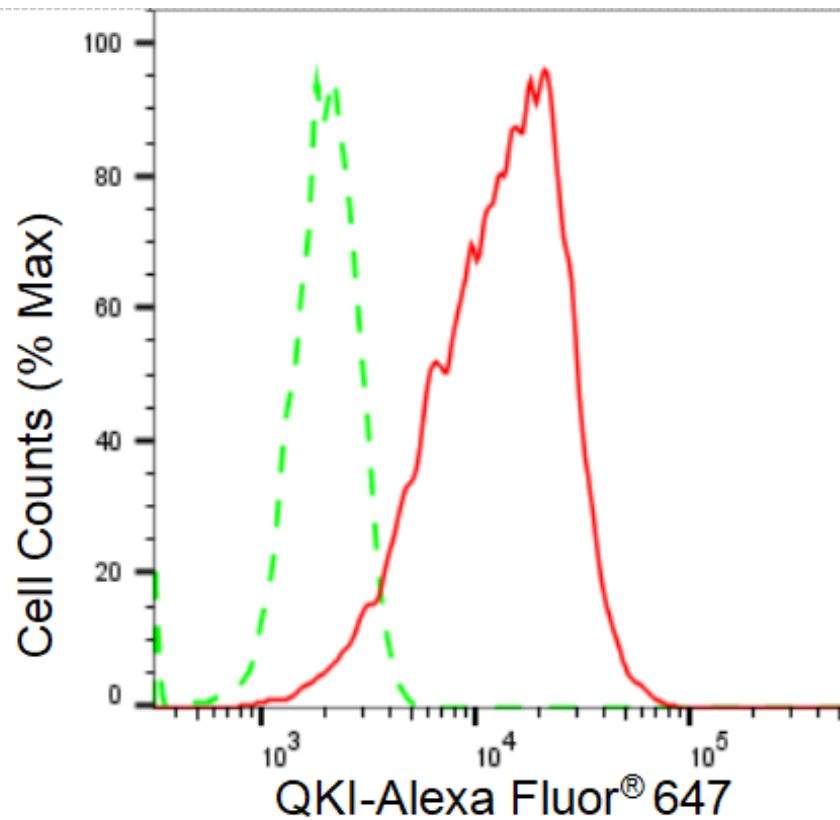
Store at -20 °C for one year.

Recommended Dilutions

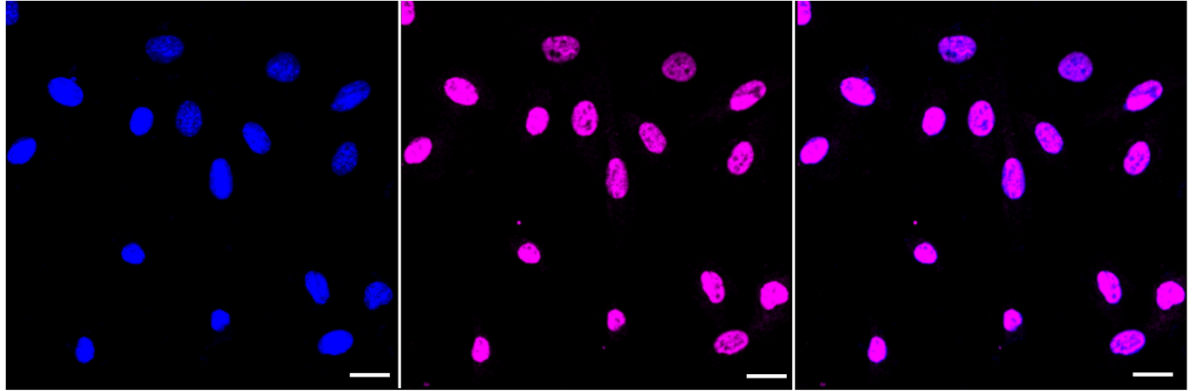
Western Blotting (WB): 1:1,000-1:5,000 Flow Cytometry (FCM): 1:2,000
Immunocytochemistry (IC): 1:1,000

Protocols

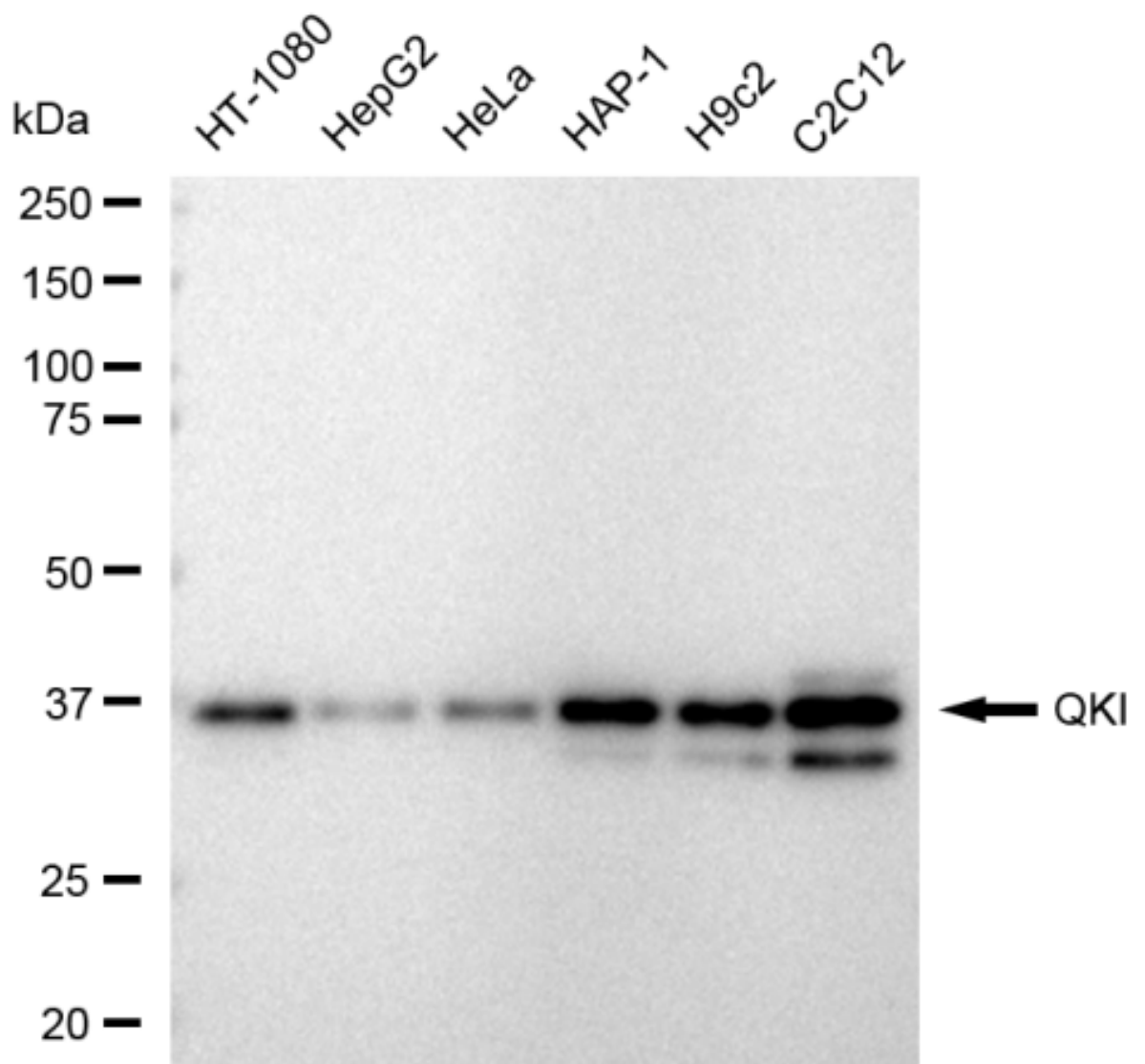
For general and specific antibody protocols please visit our website. Read all instructions before using this product.



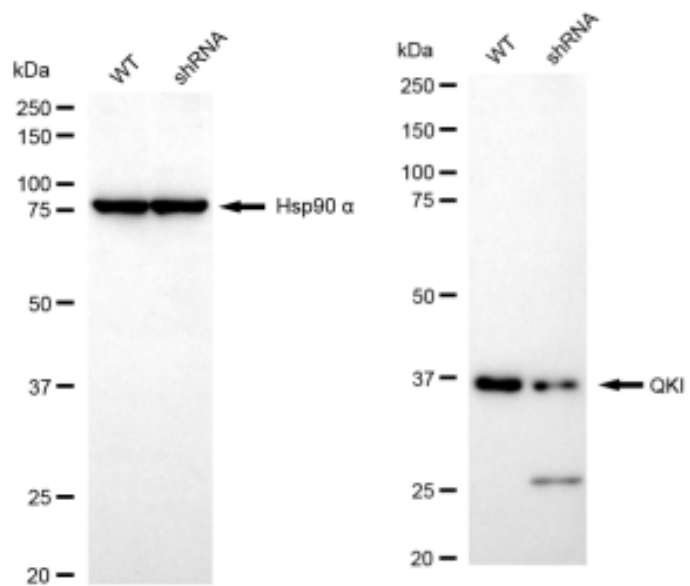
Flow cytometric analysis of QKI expression in C2C12 cells using QKI antibody 1:2000. Green, isotype control; red, QKI.



Immunocytochemical staining of C2C12 cells with QKI antibody 1:1,000. Nuclei were stained blue with DAPI; QKI was stained magenta with Alexa Fluor® 647. Images were taken using Leica stellaris 5. Protein abundance based on laser Intensity and smart gain: Medium. Scale bar: 20 μm .



Western blotting analysis using anti-QKI antibody 1:5,000 and HRP-conjugated goat anti-rabbit secondary antibody 1:20,000 respectively. Image was developed using FeQ™ ECL Substrate Kit .



Western blotting analysis using anti-QK1 antibody 1:5,000 and HRP-conjugated goat anti-rabbit secondary antibody 1:20,000 respectively. Image was developed using FeQ™ ECL Substrate Kit .