



SunLong Biotech Co.,LTD
Tel: 0086-571- 56623320 Fax:0086-571- 56623318
E-mail:sales@sunlongbiotech.com
www.sunlongbiotech.com

[KD-Validated] Anti-Paxillin Rabbit Monoclonal Antibody

Cat No.: KD-10755

Aliases:

PXN; Paxillin; Testicular Tissue Protein Li 134

Background:

UniProt Entry: [P49023](#);NCBI Gene Entry: [5829](#)

Application Information

Molecular Weight: Predicted, 65 kDa, observed, 60 kDa Clonality: Rabbit monoclonal antibody Clone ID: 23GB2690 Species Reactivity: Human, Mouse, Rat Applications Tested: Western Blotting (WB), Flow Cytometry (FCM), Immunocytochemistry (IC)

Immunogen

A synthesized peptide derived from human Paxillin

Isotype

Rabbit IgG

Storage Buffer

Supplied in PBS (pH 7.4) containing 50% glycerol, and 0.02% sodium azide.

Storage

Store at -20 °C for one year.

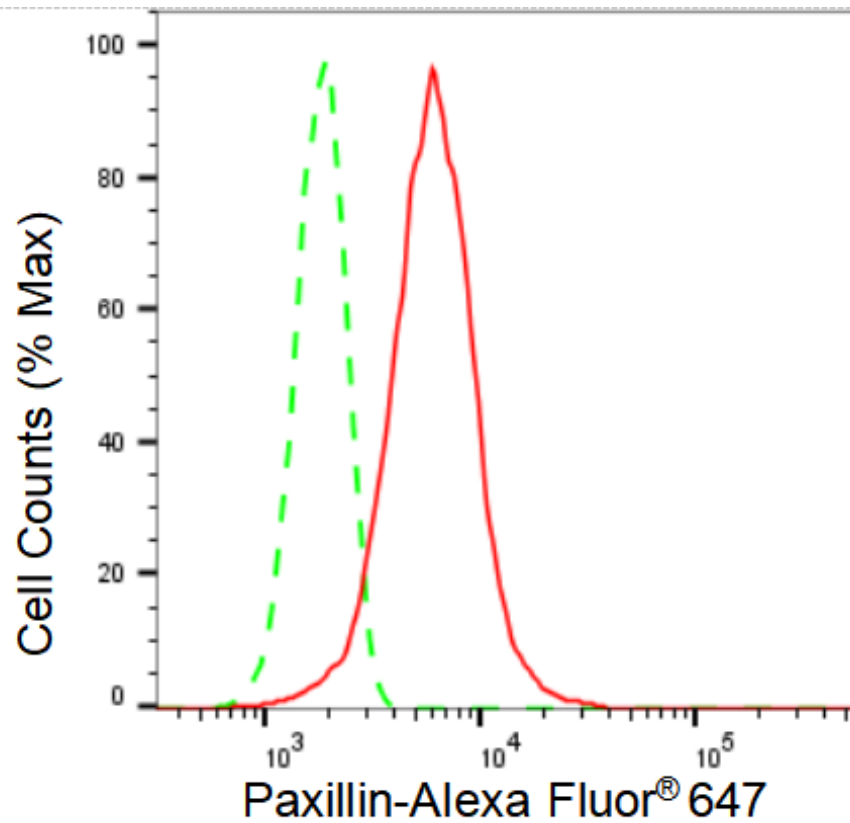
Recommended Dilutions

Western Blotting (WB): 1:1,000-1:5,000 Flow Cytometry (FCM): 1:2,000

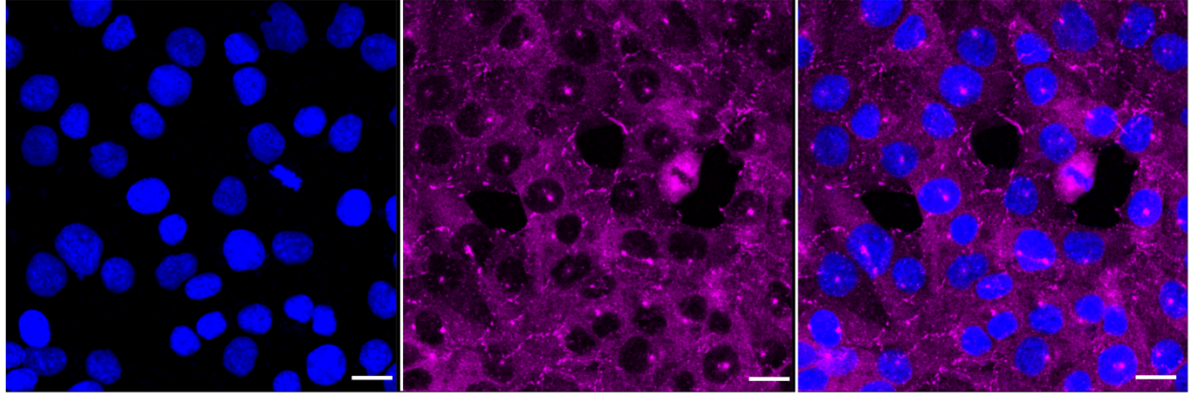
Immunocytochemistry (IC): 1:1,000

Protocols

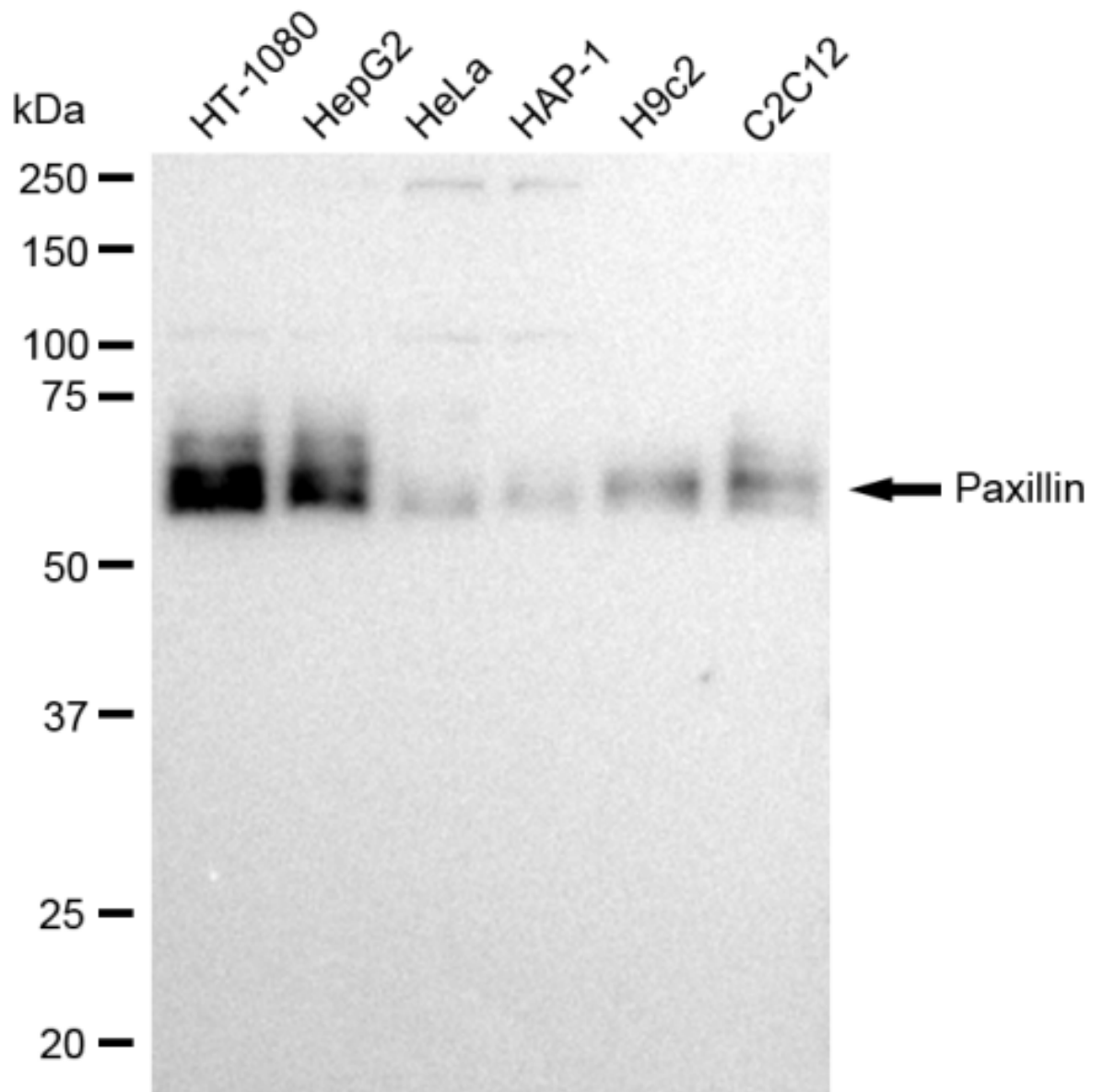
For general and specific antibody protocols please visit our website. Read all instructions before using this product.



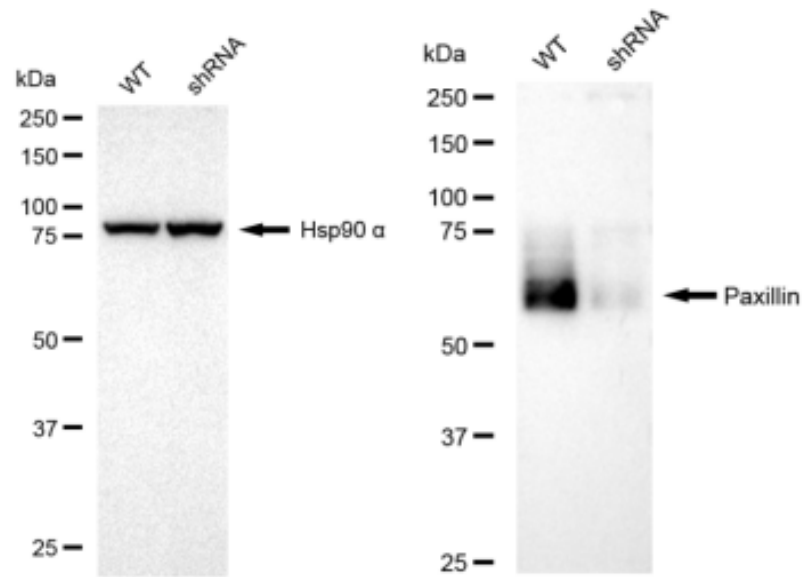
Flow cytometric analysis of Paxillin expression in HT-1080 cells using Paxillin antibody 1:2,000. Green, isotype control; red, Paxillin.



Immunocytochemical staining of HT-1080 cells with Paxillin antibody 1:1,000. Nuclei were stained blue with DAPI; Paxillin was stained magenta with Alexa Fluor® 647. Images were taken using Leica stellaris 5. Protein abundance based on laser Intensity and smart gain: High. Scale bar: 20 μm .



Western blotting analysis using anti-Paxillin antibody 1:5,000 and HRP-conjugated goat anti-rabbit secondary antibody 1:20,000 respectively. Image was developed using FeQ™ ECL Substrate Kit .



Western blotting analysis using anti-Paxillin antibody 1:5,000 and HRP-conjugated goat anti-rabbit secondary antibody 1:20,000 respectively. Image was developed using FeQ™ ECL Substrate Kit .