



SunLong Biotech Co.,LTD
Tel: 0086-571- 56623320 Fax:0086-571- 56623318
E-mail:sales@sunlongbiotech.com
www.sunlongbiotech.com

[KD-Validated] Anti-PTTG1 Rabbit Monoclonal Antibody

Cat No.: KD-10751

Aliases:

PTTG1 Regulator Of Sister Chromatid Separation, Securin; Securin; HPTTG; PTTG; EAP1; Tumor-Transforming Protein ; ECRAR; TUTR1; Endogenous Cardiac Regeneration-Associated Regulator; Pituitary Tumor-Transforming Gene 1 Protein; Pituitary Tumor-Transforming 1; ESP1-Associated Protein 1; Esp1-Associated Protein

Background:

UniProt Entry: [O95997](#);NCBI Gene Entry: [9232](#)

Application Information

Molecular Weight: Predicted, 22 kDa, observed, 25 kDa Clonality: Rabbit monoclonal antibody Clone ID: 24GB1495 Species Reaceivity: Human, Mouse Applicseions Tsted: Western Blotting (WB), Flow Cytometry (FCM)

Immunogen

A synthesized peptide derived from human Securin

Isotype

Rabbit IgG

Storage Buffer

Supplied in PBS (pH 7.4) containing 50% glycerol, and 0.02% sodium azide.

Storage

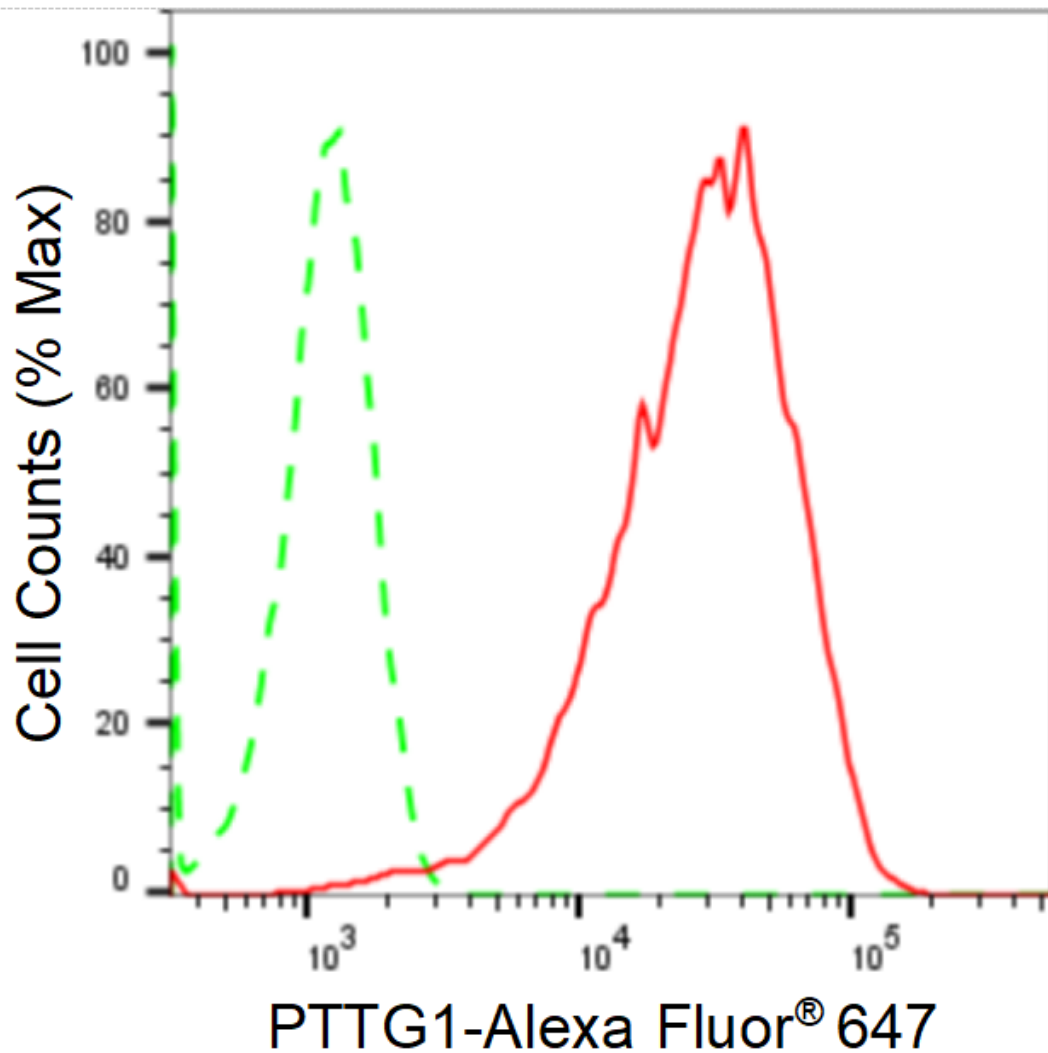
Store at -20 °C for one year.

Recommended Dilutions

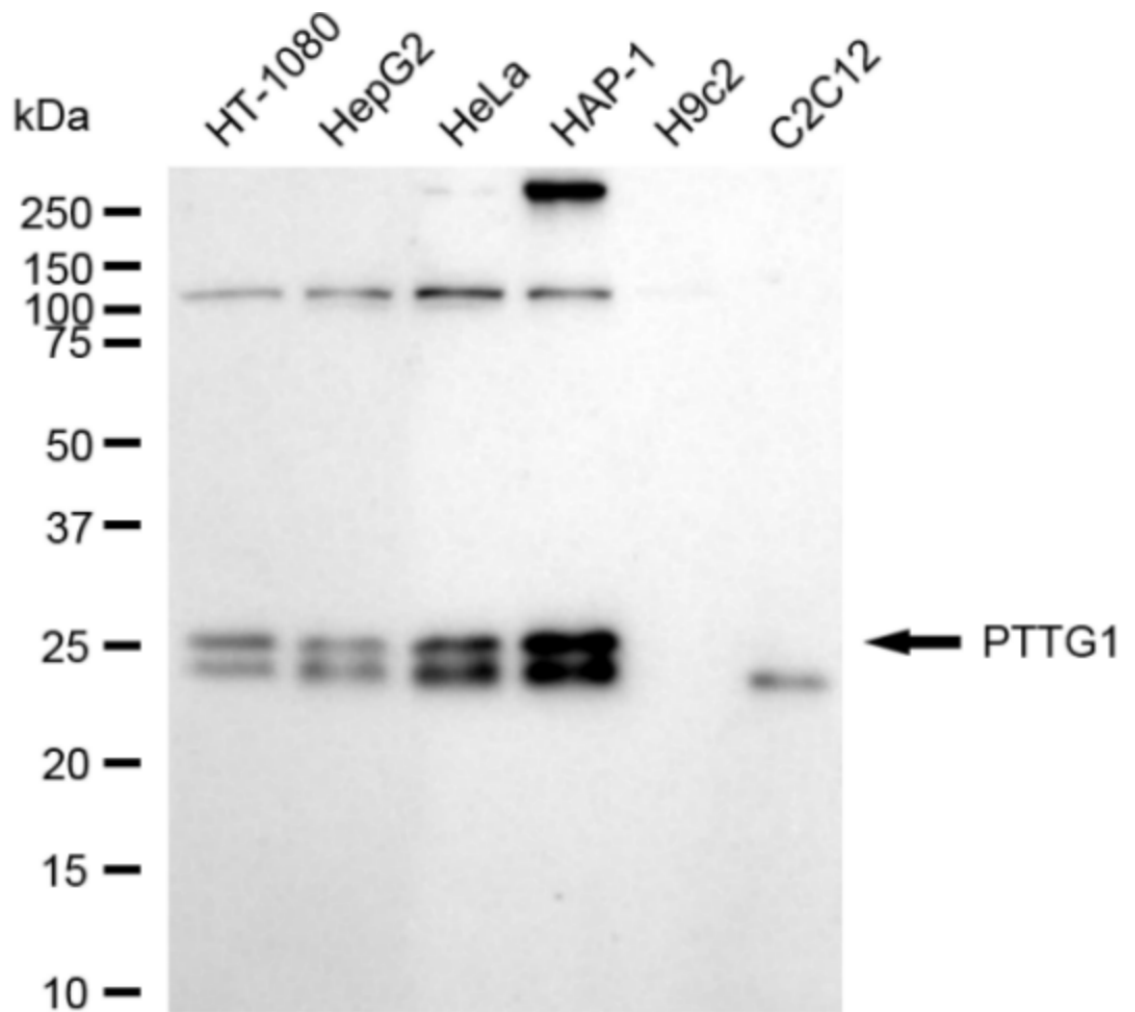
Western Blotting (WB): 1:1,000-1:5,000 Flow Cytometry (FCM): 1:2,000

Protocols

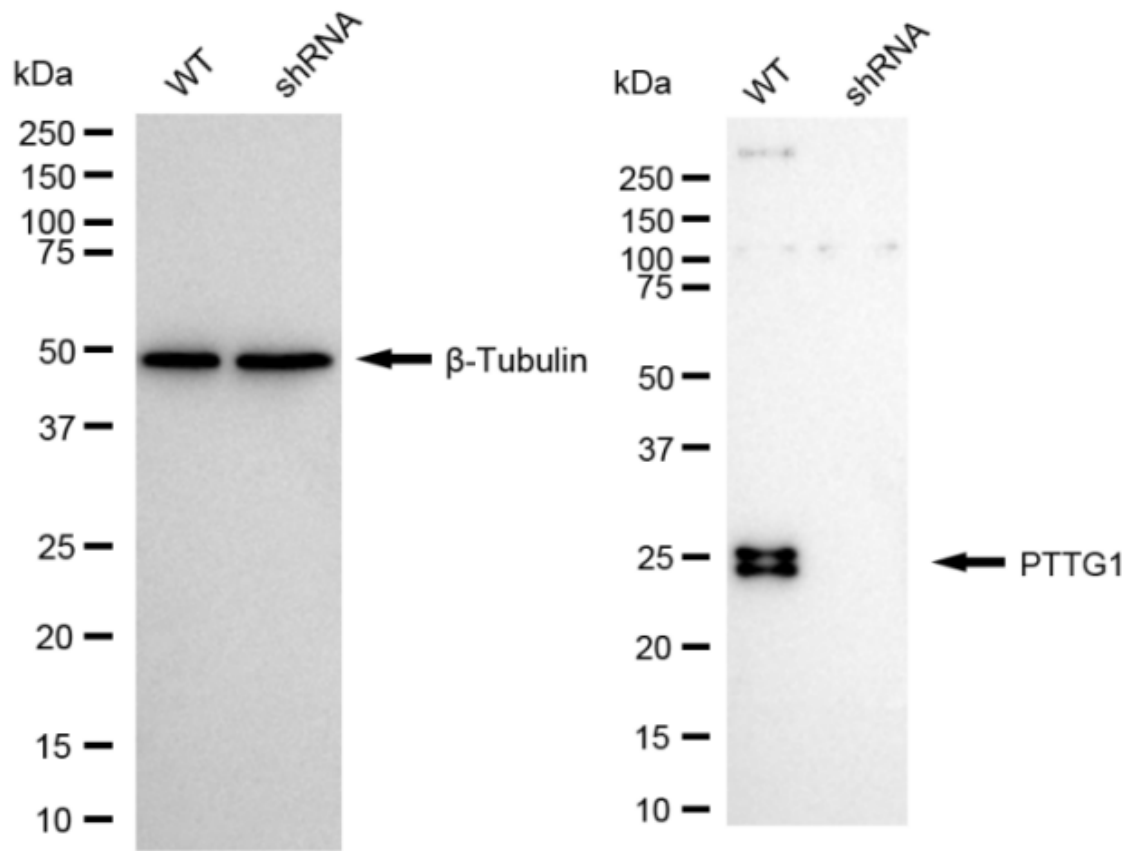
For general and specific antibody protocols please visit our website. Read all instructions before using this product.



Flow cytometric analysis of PTTG1 expression in HAP-1 cells using anti-PTTG1 antibody 1:2,000. Green, isotype control; red, PTTG1.



Western blotting analysis using anti-PTTG1 antibody 1:5,000 and HRP-conjugated goat anti-rabbit secondary antibody 1:20,000 respectively. Image was developed using FeQ™ ECL Substrate Kit .



Western blotting analysis using anti-PTTG1 antibody 1:5,000 and HRP-conjugated goat anti-rabbit secondary antibody 1:20,000 respectively. Image was developed using NaQ™ ECL Substrate Kit .