



SunLong Biotech Co.,LTD
Tel: 0086-571- 56623320 Fax:0086-571- 56623318
E-mail:sales@sunlongbiotech.com
www.sunlongbiotech.com

[KD-Validated] Anti-PTPN11 Rabbit Monoclonal Antibody

Cat No.: KD-10750

Aliases:

PTPN11; Protein Tyrosine Phosphatase Non-Receptor Type 11; SH-PTP2; PTP2C; BPTP3; SHP-2; SHP2; SH2 Domain-Containing Protein Tyrosine Phosphatase 2; Tyrosine-Protein Phosphatase Non-Receptor Type 11; Protein-Tyrosine Phosphatase 1D; Protein-Tyrosine Phosphatase 2C; EC 3.1.3.48; SH-PTP3; PTP-1D; NS1; Protein Tyrosine Phosphatase, Non-Receptor Type 11; Noonan Syndrome 1; METCDS; SHPTP2; PTP-2C; JMML; Shp2; CFC

Background:

UniProt Entry: [Q06124](#);NCBI Gene Entry: [5781](#)

Application Information

Molecular Weight: Predicted, 68 kDa, observed, 68 kDa Clonality: Rabbit monoclonal antibody Clone ID: 24GB5055 Species Reactivity: Human Applications Used: Western Blotting (WB), Flow Cytometry (FCM)

Immunogen

A synthesized peptide derived from human SHP2

Isotype

Rabbit IgG

Storage Buffer

Supplied in PBS (pH 7.4) containing 50% glycerol, and 0.02% sodium azide.

Storage

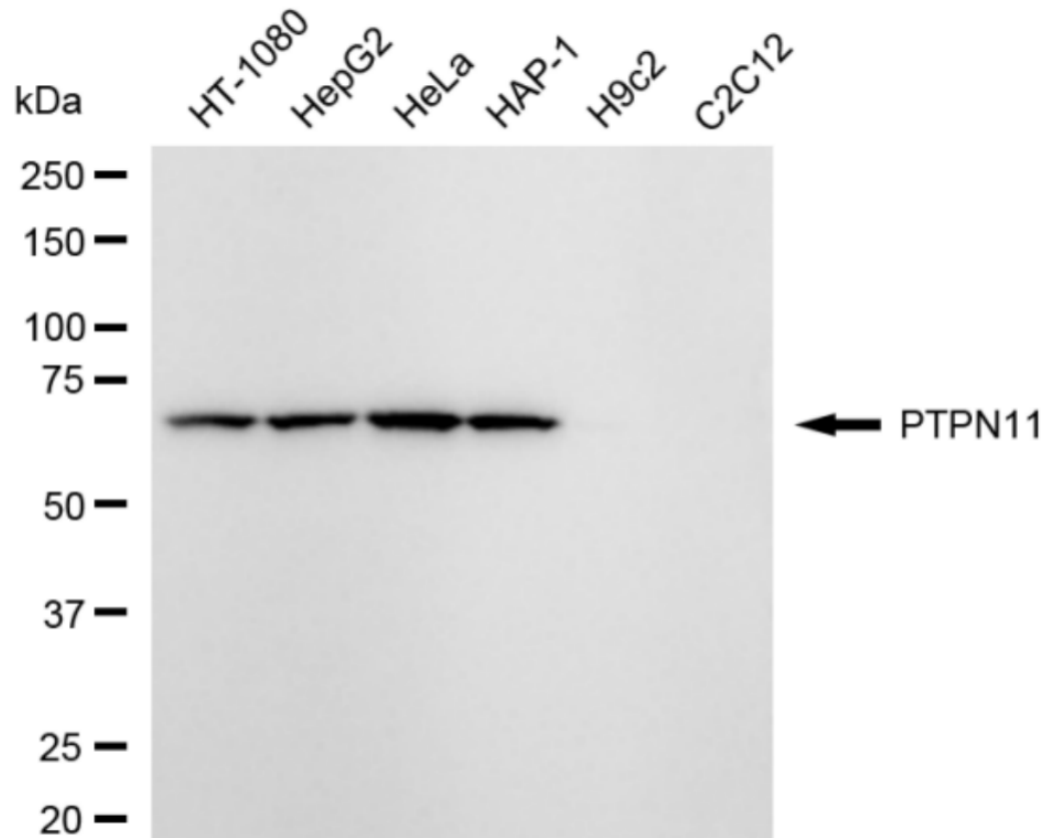
Store at -20 °C for one year.

Recommended Dilutions

Western Blotting (WB): 1:1,000-1:5,000 Flow Cytometry (FCM): 1:2,000

Protocols

For general and specific antibody protocols please visit our website. Read all instructions before using this product.



Western blotting analysis using anti-PTPN11 antibody 1:5,000 and HRP-conjugated goat anti-rabbit secondary antibody 1:20,000 respectively. Image was developed using Plus ECL Super Kit 1:5,000 and HRP-conjugated goat anti-rabbit secondary antibody 1:20,000 respectively. Image was developed using NaQ™ ECL Substrate Kit 1:2,000. Green, isotype control; red,PTPN11.