



SunLong Biotech Co.,LTD
Tel: 0086-571- 56623320 Fax:0086-571- 56623318
E-mail:sales@sunlongbiotech.com
www.sunlongbiotech.com

[KD-Validated] Anti-PTPN11 Rabbit Monoclonal Antibody

Cat No.: KD-10748

Aliases:

PTPN11; Protein Tyrosine Phosphatase Non-Receptor Type 11; SH-PTP2; PTP2C; BPTP3; SHP-2; SHP2; SH2 Domain-Containing Protein Tyrosine Phosphatase 2; Tyrosine-Protein Phosphatase Non-Receptor Type 11; Protein-Tyrosine Phosphatase 1D; Protein-Tyrosine Phosphatase 2C; EC 3.1.3.48; SH-PTP3; PTP-1D; NS1; Protein Tyrosine Phosphatase, Non-Receptor Type 11; Noonan Syndrome 1; METCDS; SHPTP2; PTP-2C; JMML; Shp2; CFC

Background:

UniProt Entry: [Q06124](#);NCBI Gene Entry: [5781](#)

Application Information

Molecular Weight: Predicted, 68 kDa, observed, 68 kDa Clonality: Rabbit monoclonal antibody Clone ID: 23GB2670 Species Reactivity: Human, Mouse, Rat Applications Tested: Western Blotting (WB), Flow Cytometry (FCM), Immunocytochemistry (IC)

Immunogen

A synthesized peptide derived from human SHP2

Isotype

Rabbit IgG

Storage Buffer

Supplied in PBS (pH 7.4) containing 50% glycerol, and 0.02% sodium azide.

Storage

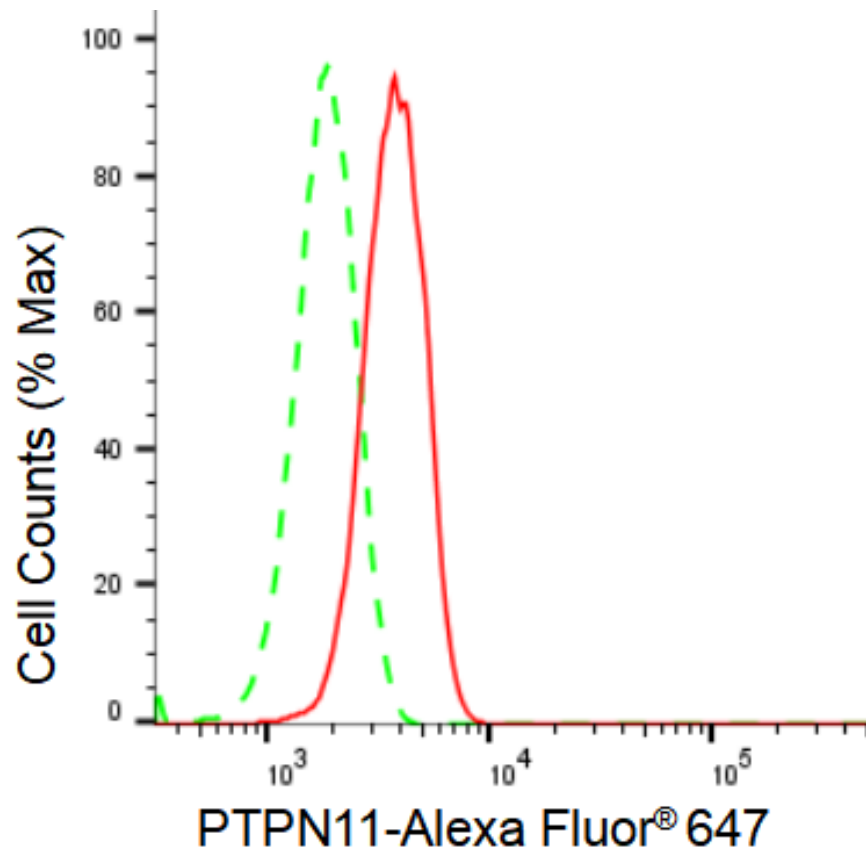
Store at -20 °C for one year.

Recommended Dilutions

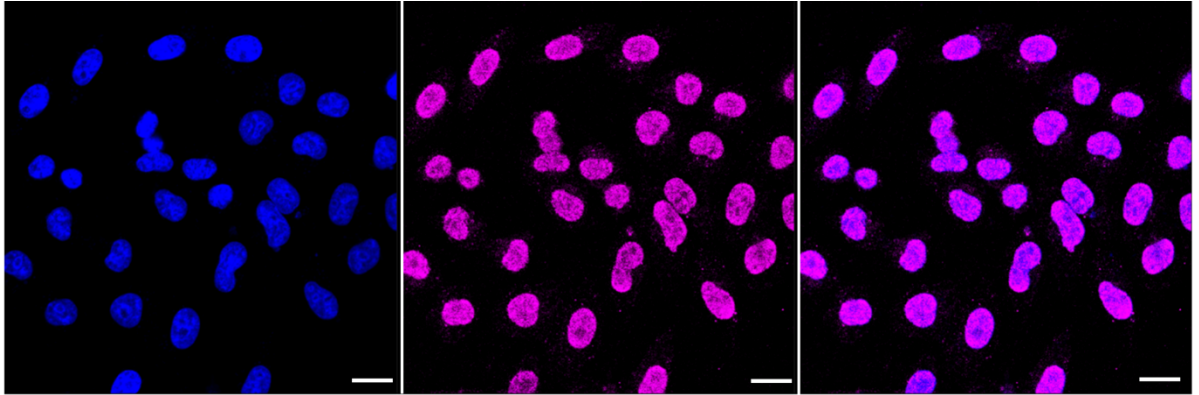
Western Blotting (WB): 1:1,000-1:5,000 Flow Cytometry (FCM): 1:2,000
Immunocytochemistry (IC): 1:1,000

Protocols

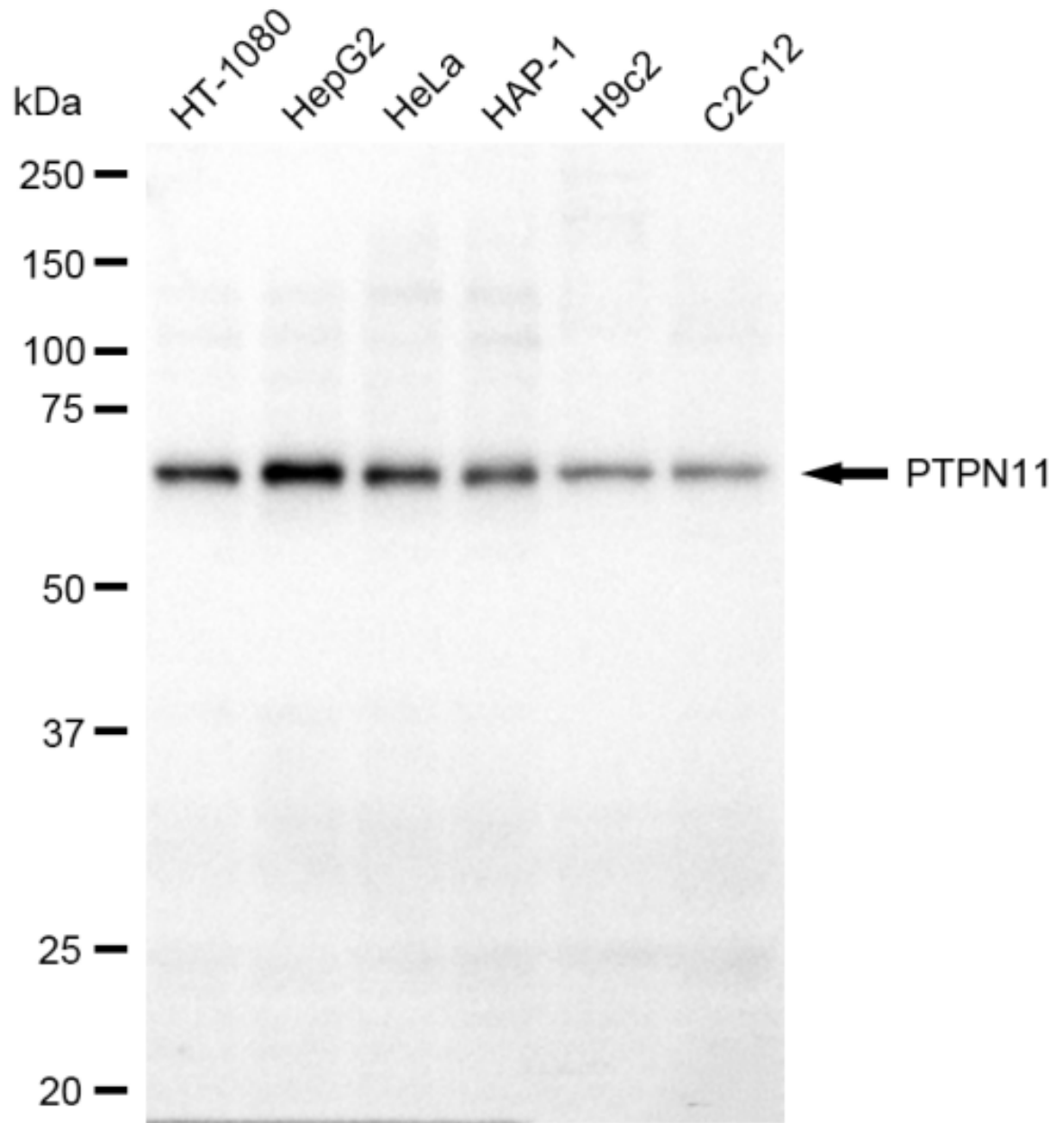
For general and specific antibody protocols please visit our website. Read all instructions before using this product.



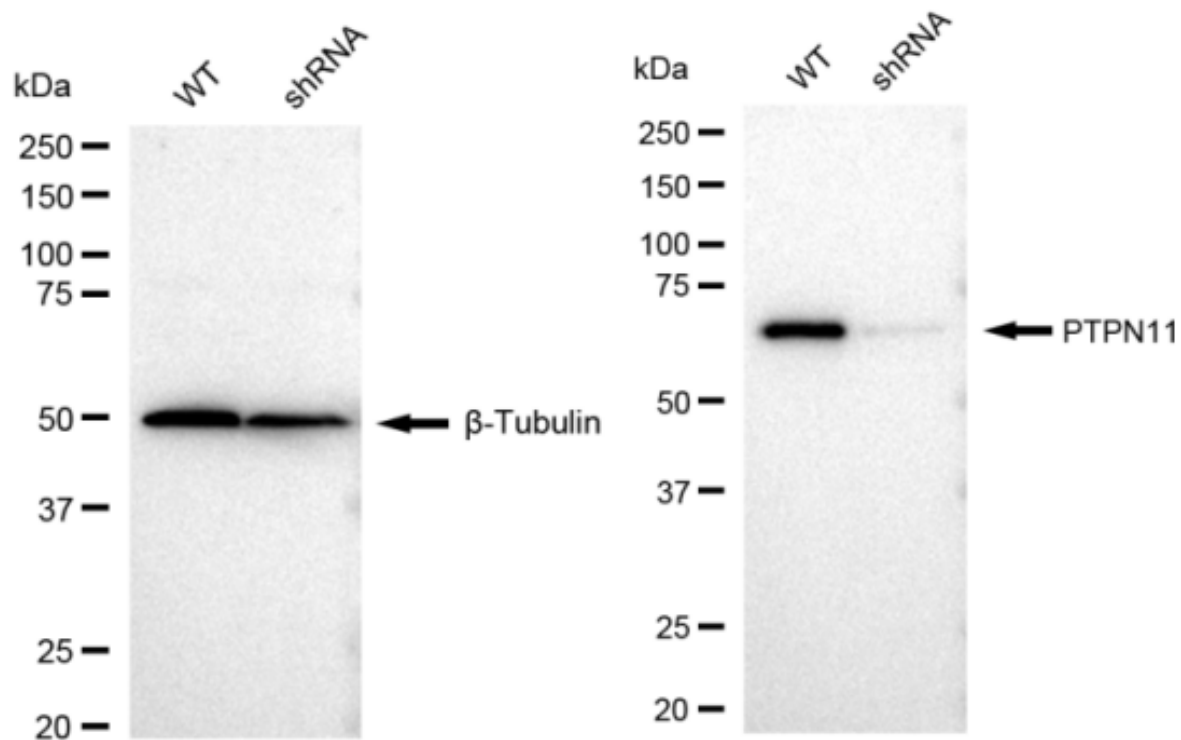
Flow cytometric analysis of PTPN11 expression in HepG2 cells using PTPN11 antibody 1:2,000. Green, isotype control; red, PTPN11.



Immunocytochemical staining of HepG2 cells with PTPN11 antibody 1:1,000. Nuclei were stained blue with DAPI; PTPN11 was stained magenta with Alexa Fluor® 647. Images were taken using Leica stellaris 5. Protein abundance based on laser Intensity and smart gain: Low. Scale bar: 20 μ m.



Western blotting analysis using anti-PTPN11 antibody 1:5,000 and HRP-conjugated goat anti-rabbit secondary antibody 1:20,000 respectively. Image was developed using FeQ™ ECL Substrate Kit . PTPN11, protein tyrosine phosphatase non-receptor type 11.



Western blotting analysis using anti-PTPN11 antibody 1:5000 and HRP-conjugated goat anti-rabbit secondary antibody 1:20000 respectively. Image was developed using FeQ™ ECL Substrate Kit .