



SunLong Biotech Co.,LTD  
Tel: 0086-571- 56623320 Fax:0086-571- 56623318  
E-mail:sales@sunlongbiotech.com  
www.sunlongbiotech.com

## **[KD-Validated] Anti-Prostaglandin E Synthase 3 Rabbit Monoclonal Antibody**

Cat No.: KD-10747

### **Aliases:**

PTGES3; Prostaglandin E Synthase 3; CPGES; TEBP; P23; Prostaglandin E Synthase 3 (Cytosolic); Cytosolic Prostaglandin E2 Synthase; Progesterone Receptor Complex P23; Telomerase-Binding Protein P23; Hsp90 Co-Chaperone; EC 5.3.99.3; Unactive Progesterone Receptor, 23 KD; Cytosolic Prostaglandin E Synthase

### **Background:**

UniProt Entry: [Q15185](#);NCBI Gene Entry: [10728](#)

### **Application Information**

Molecular Weight: Predicted, 19 kDa, observed, 23 kDa Clonality: Rabbit monoclonal antibody Clone ID: 24GB1470 Species Reactivity: Human, Mouse, Rat Applications Tested: Western Blotting (WB), Flow Cytometry (FCM)

### **Immunogen**

A synthesized peptide derived from human p23

### **Isotype**

Rabbit IgG

### **Storage Buffer**

Supplied in PBS (pH 7.4) containing 50% glycerol, and 0.02% sodium azide.

### Storage

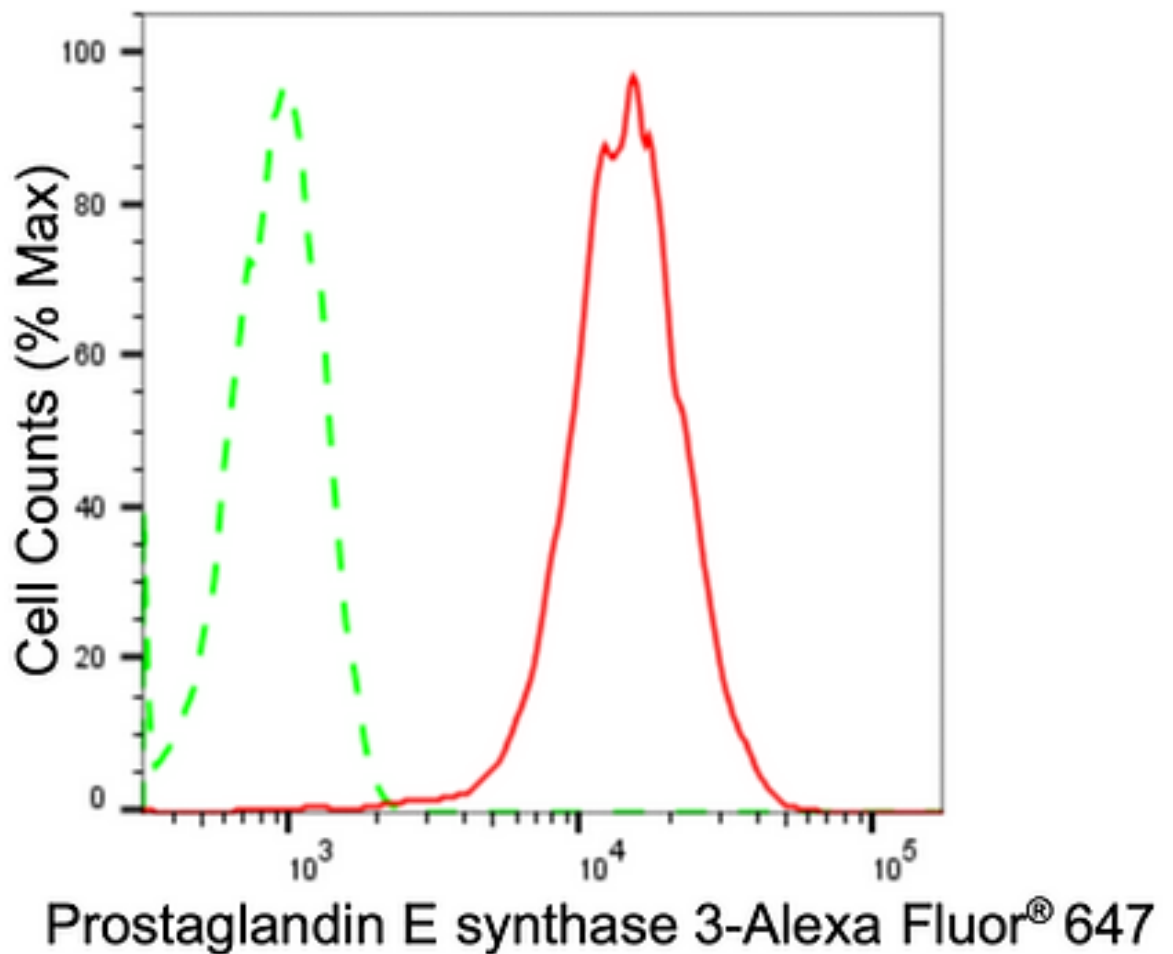
Store at -20 °C for one year.

### Recommended Dilutions

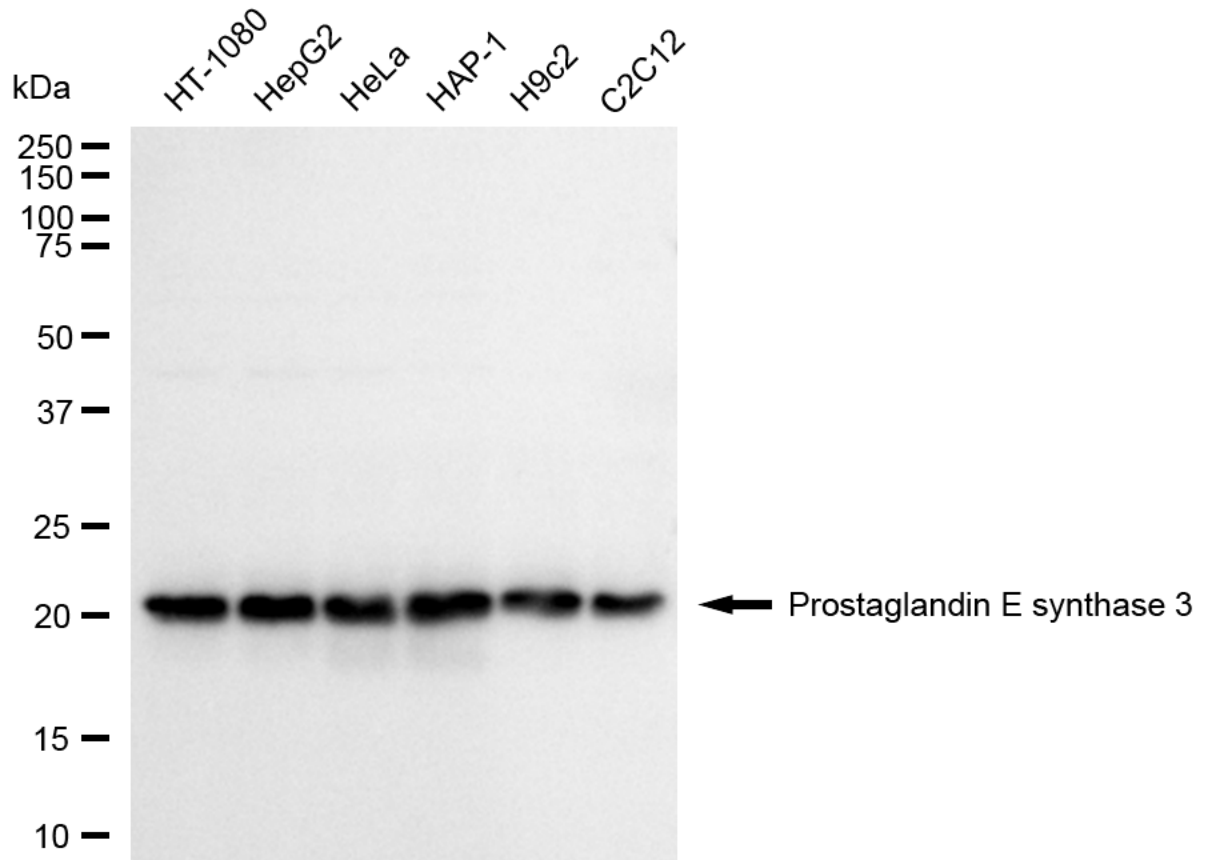
Western Blotting (WB): 1:1,000-1:5,000 Flow Cytometry (FCM): 1:2,000

### Protocols

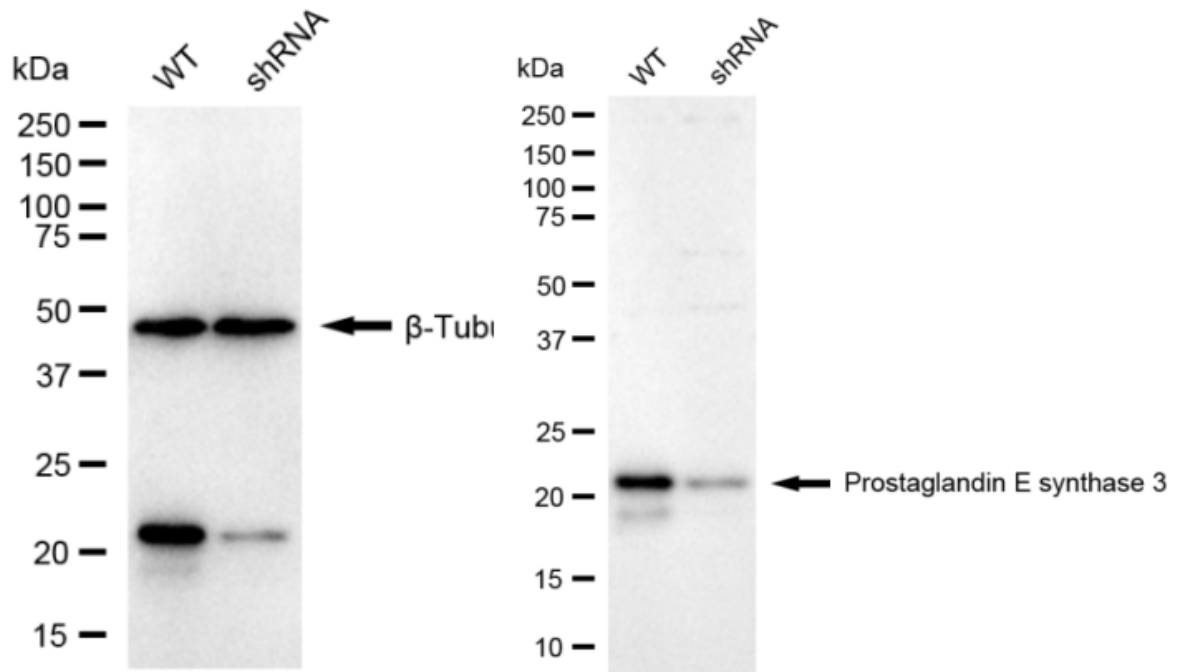
For general and specific antibody protocols please visit our website. Read all instructions before using this product.



Flow cytometric analysis of Prostaglandin E synthase 3 expression in HepG2 cells using anti-Prostaglandin E synthase 3 antibody 1:2,000. Green, isotype control; red, Prostaglandin E synthase 3.



Western blotting analysis using anti-Prostaglandin E synthase 3 antibody 1:5,000 and HRP-conjugated goat anti-rabbit secondary antibody 1:20,000 respectively. Image was developed using FeQ™ ECL Substrate Kit .



Western blotting analysis using anti-prostaglandin E synthase 3 antibody 1:5,000 and HRP-conjugated goat anti-rabbit secondary antibody 1:20,000 respectively. Image was developed using NaQ™ ECL Substrate Kit .