



SunLong Biotech Co.,LTD
Tel: 0086-571- 56623320 Fax:0086-571- 56623318
E-mail:sales@sunlongbiotech.com
www.sunlongbiotech.com

[KD-Validated] Anti-Proteasome Activator Subunit 1 Rabbit Monoclonal Antibody

Cat No.: KD-10745

Aliases:

Proteasome Activator Subunit 1; PA28alpha; IFI5111; Proteasome (Prosome, Macropain) Activator Subunit 1 (PA28 Alpha); Activator Of Multicatalytic Protease Subunit 1; Interferon Gamma Up-Regulated I-5111 Protein; Proteasome Activator Complex Subunit 1; 11S Regulator Complex Subunit Alpha; IGUP I-5111; Epididymis Secretory Sperm Binding Protein Li 129m; Interferon-Gamma-Inducible Protein 5111; Proteasome Activator 28 Subunit Alpha; Interferon-Gamma IEF SSP 5111; 29-KD MCP Activator Subunit; HEL-S-129m; REG-Alpha; REGalpha; PA28A; PA28a

Background:

UniProt Entry: [Q06323](#);NCBI Gene Entry: [5720](#)

Application Information

Molecular Weight: Predicted, 29 kDa, observed, 29 kDa Clonality: Rabbit monoclonal antibody Clone ID: 24GB1505 Species Reactivity: Human, Mouse, Rat Applications Tested: Western Blotting (WB), Flow Cytometry (FCM)

Immunogen

A synthesized peptide derived from human PSME1

Isotype

Rabbit IgG

Storage Buffer

Supplied in PBS (pH 7.4) containing 50% glycerol, and 0.02% sodium azide.

Storage

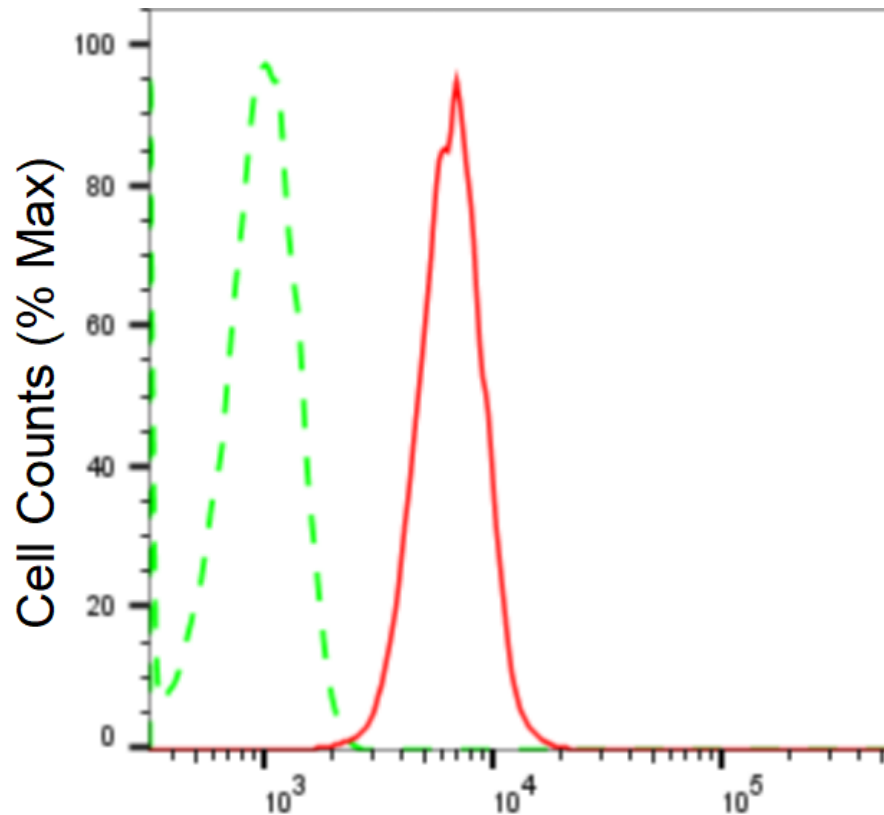
Store at -20 °C for one year.

Recommended Dilutions

Western Blotting (WB): 1:1,000-1:5,000 Flow Cytometry (FCM): 1:2,000

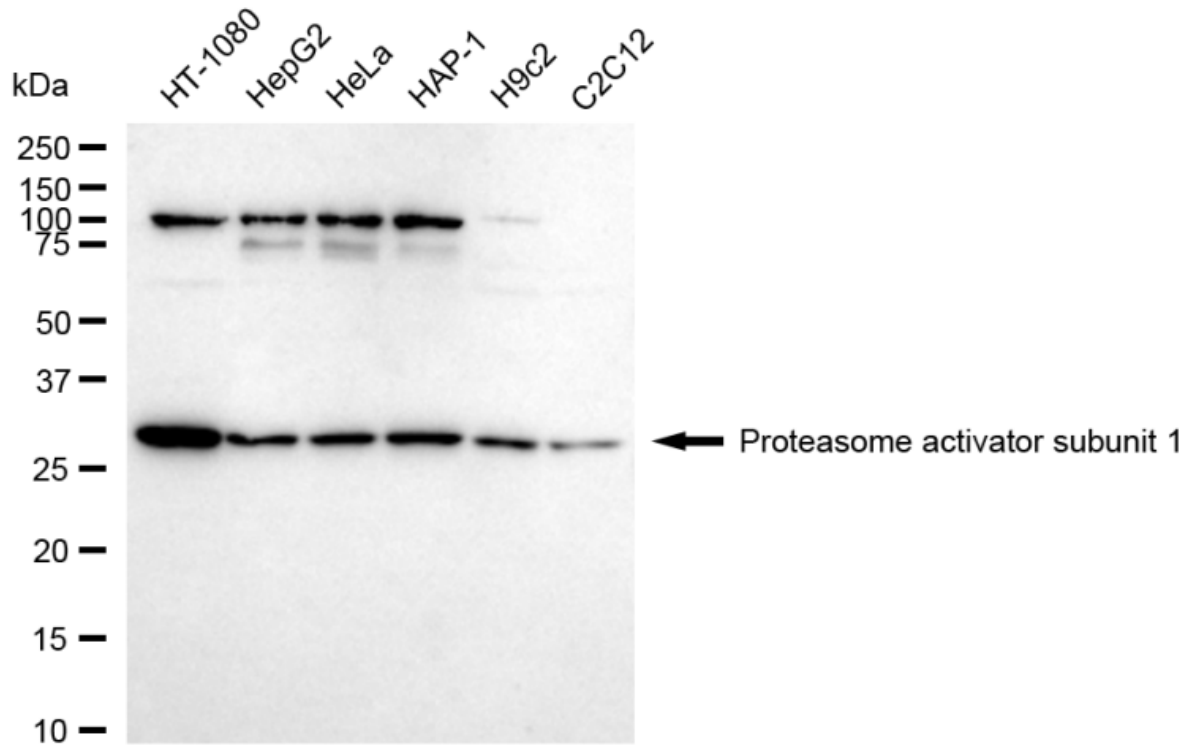
Protocols

For general and specific antibody protocols please visit our website. Read all instructions before using this product.

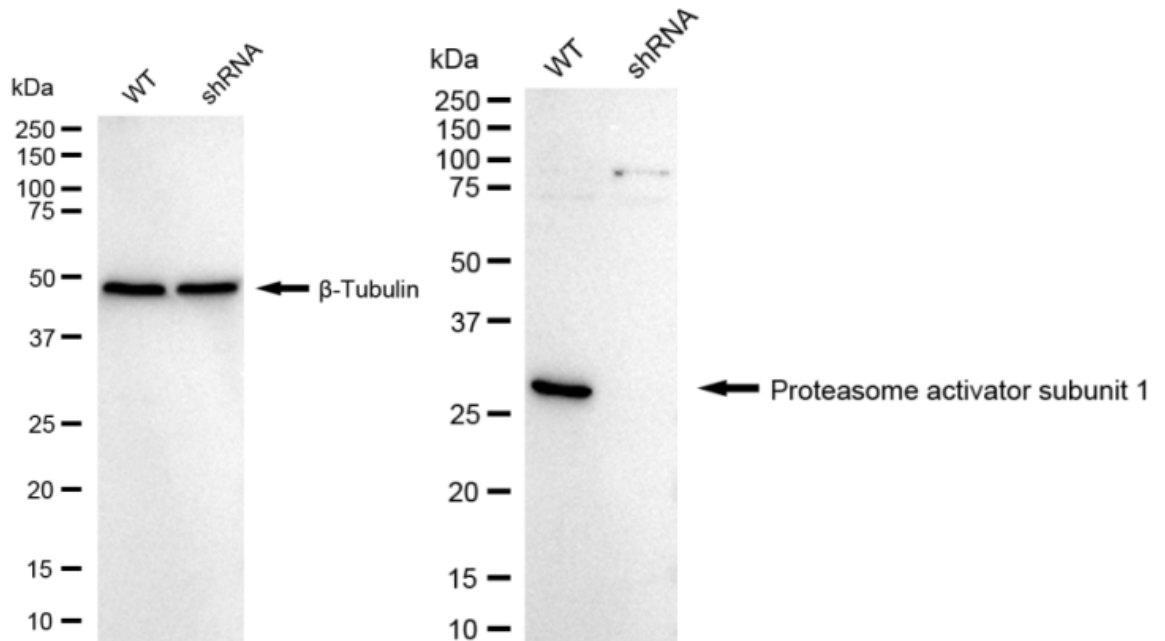


Proteasome activator subunit 1-Alexa Fluor[®] 647

Flow cytometric analysis of Proteasome activator subunit 1 expression in HT-1080 cells using anti-Proteasome activator subunit 1 antibody 1:2,000. Green, isotype control; red, Proteasome activator subunit 1.



Western blotting analysis using anti-Proteasome activator subunit 1 antibody 1:5,000 and HRP-conjugated goat anti-rabbit secondary antibody 1:20,000 respectively. Image was developed using FeQ™ ECL Substrate Kit .



Western blotting analysis using anti-Proteasome activator subunit 1 antibody 1:5,000 and HRP-conjugated goat anti-rabbit secondary antibody 1:20,000 respectively. Image was developed using NaQ™ ECL Substrate Kit .