



SunLong Biotech Co.,LTD
Tel: 0086-571- 56623320 Fax:0086-571- 56623318
E-mail:sales@sunlongbiotech.com
www.sunlongbiotech.com

[KD-Validated] Anti-PSMA1 Rabbit Monoclonal Antibody

Cat No.: KD-10743

Aliases:

Proteasome 20S Subunit Alpha 1; PROS30; HC2; NU; Proteasome (Prosome, Macropain)Subunit,Alpha Type,1; Multicatalytic Endopeptidase Complex Subunit C2; Proteasome Subunit Alpha Type-1; Proteasome Subunit Alpha 1; 30 KDa Prosomal Protein; Proteasome Component C2;Macropain Subunit C2; Proteasome Nu Chain; MGC14542; MGC14575; MGC14751

Background:

UniProt Entry: [P25786](#);NCBI Gene Entry: [5682](#)

Application Information

Molecular Weight: Predicted, 30 kDa, observed, 30 kDa Clonality: Rabbit monoclonal antibody Clone ID: 24GB1610 Species Reactivity: Human, Mouse, Rat Applications Tested: Western Blotting (WB), Flow Cytometry (FCM)

Immunogen

A synthesized peptide derived from human Proteasome 20S C2

Isotype

Rabbit IgG

Storage Buffer

Supplied in PBS (pH 7.4) containing 50% glycerol, and 0.02% sodium azide.

Storage

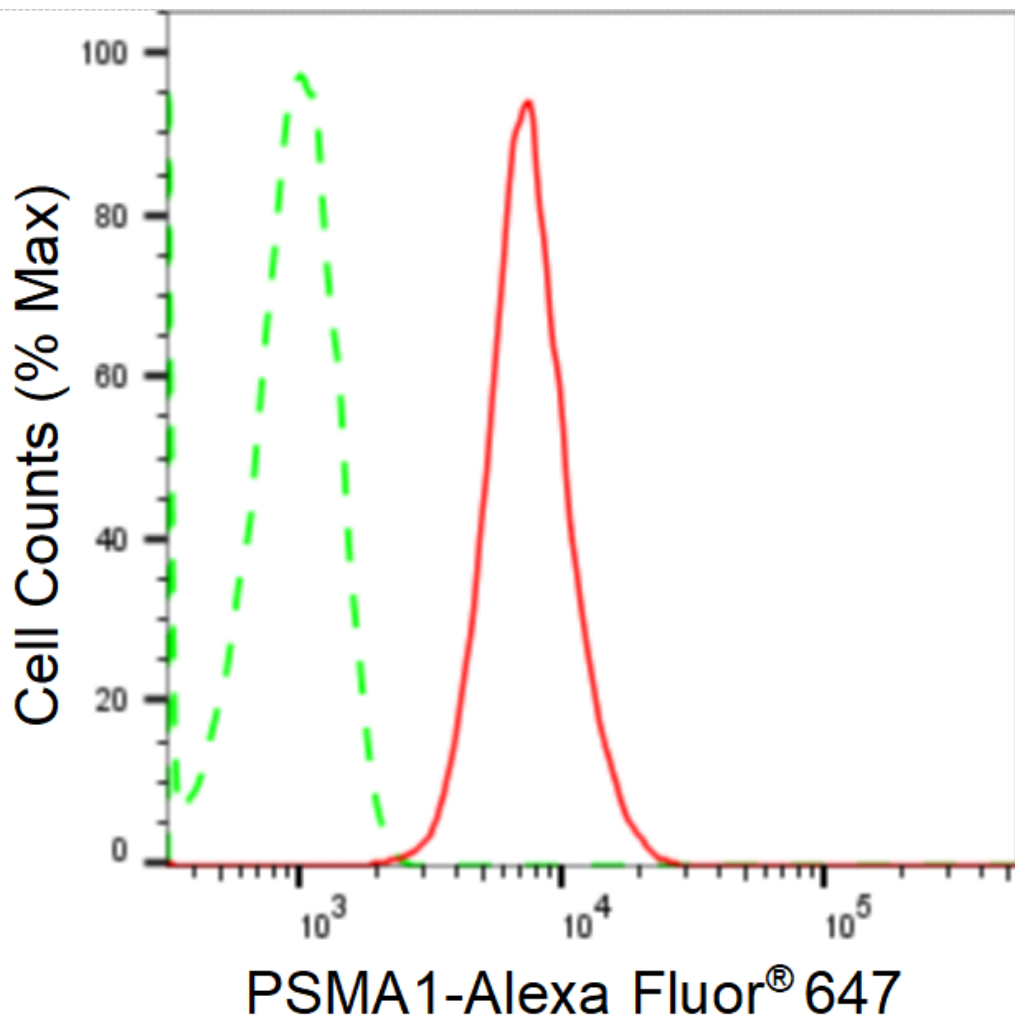
Store at -20 °C for one year.

Recommended Dilutions

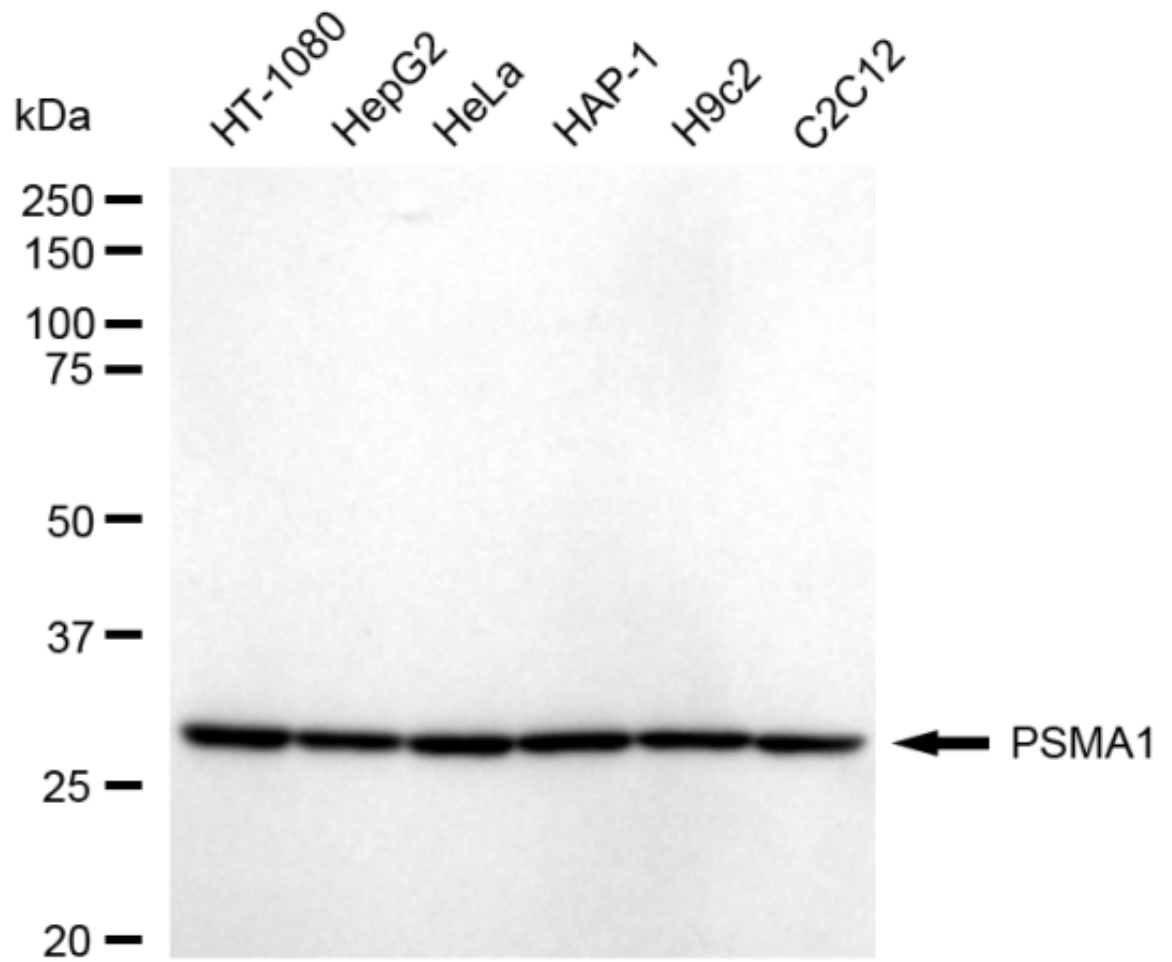
Western Blotting (WB): 1:1,000-1:5,000 Flow Cytometry (FCM): 1:2,000

Protocols

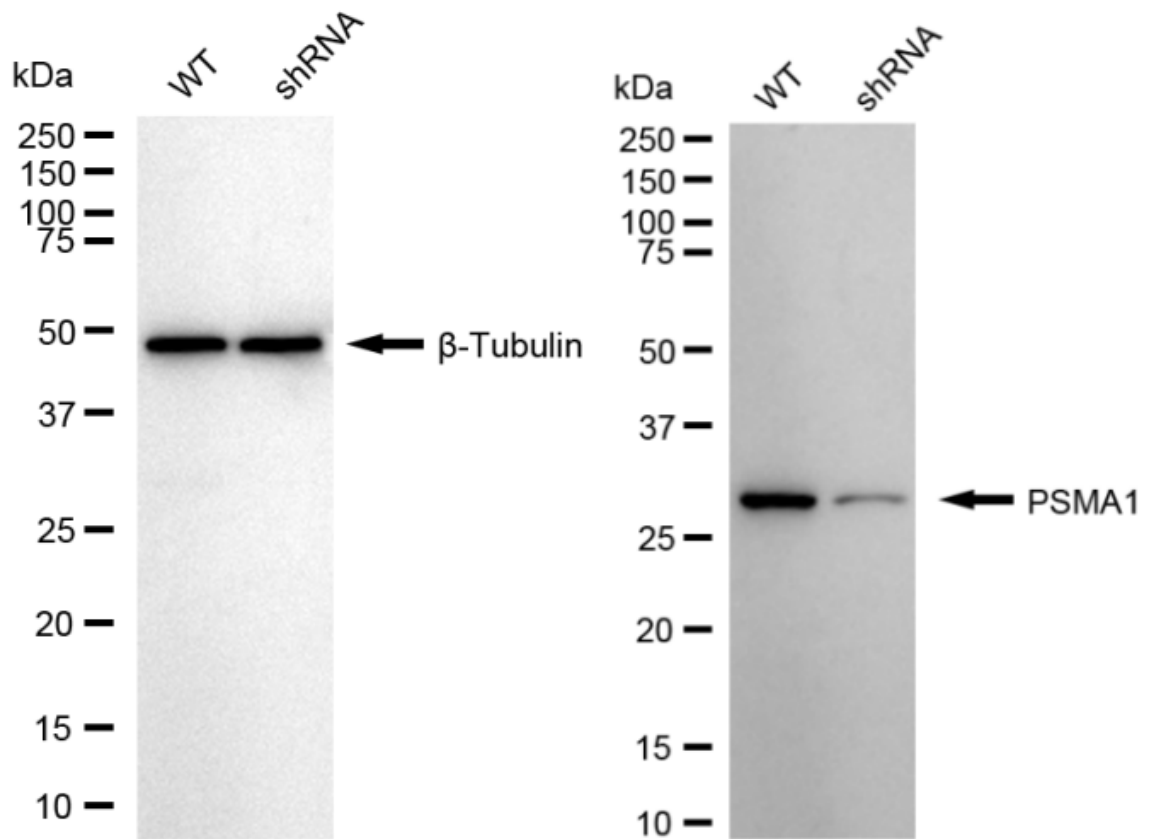
For general and specific antibody protocols please visit our website. Read all instructions before using this product.



Flow cytometric analysis of PSMA1 expression in HT-1080 cells using anti-PSMA1 antibody 1:2,000. Green, isotype control; red, PSMA1.



Western blotting analysis using anti-PSMA1 antibody 1:5,000 and HRP-conjugated goat anti-rabbit secondary antibody 1:20,000 respectively. Image was developed using FeQ™ ECL Substrate Kit .



Western blotting analysis using anti-PSMA1 antibody 1:5,000 and HRP-conjugated goat anti-rabbit secondary antibody 1:20,000 respectively. Image was developed using NaQ™ ECL Substrate Kit .