



SunLong Biotech Co.,LTD  
Tel: 0086-571- 56623320 Fax:0086-571- 56623318  
E-mail:sales@sunlongbiotech.com  
www.sunlongbiotech.com

## **[KD-Validated] Anti-PSIP1 / LEDGF Rabbit Monoclonal Antibody**

Cat No.: KD-10742

### **Aliases:**

PC4 And SRSF1 Interacting Protein 1; LEDGF; DFS70; Lens Epithelium-Derived Growth Factor; PSIP2; P52; P75; PC4 And SFRS1 Interacting Protein 1; Dense Fine Speckles 70 KDa Protein; PC4 And SFRS1-Interacting Protein; CLL-Associated Antigen KW-7; PC4 And SFRS1 Interacting Protein 2; Transcriptional Coactivator P52/P75; Transcriptional Coactivator P75/P52; DFS 70; PAIP

### **Background:**

UniProt Entry: [O75475](#);NCBI Gene Entry: [11168](#)

### **Application Information**

Molecular Weight: Predicted, 60 kDa, observed, 75 kDa Clonality: Rabbit monoclonal antibody Clone ID: 24GB840 Species Reactivity: Human, Mouse, Rat Applications Tested: Western Blotting (WB), Flow Cytometry (FCM), Immunocytochemistry (IC)

### **Immunogen**

A synthesized peptide derived from human PSIP1 / LEDGF

### **Isotype**

Rabbit IgG

### **Storage Buffer**

Supplied in PBS (pH 7.4) containing 50% glycerol, and 0.02% sodium azide.

**Storage**

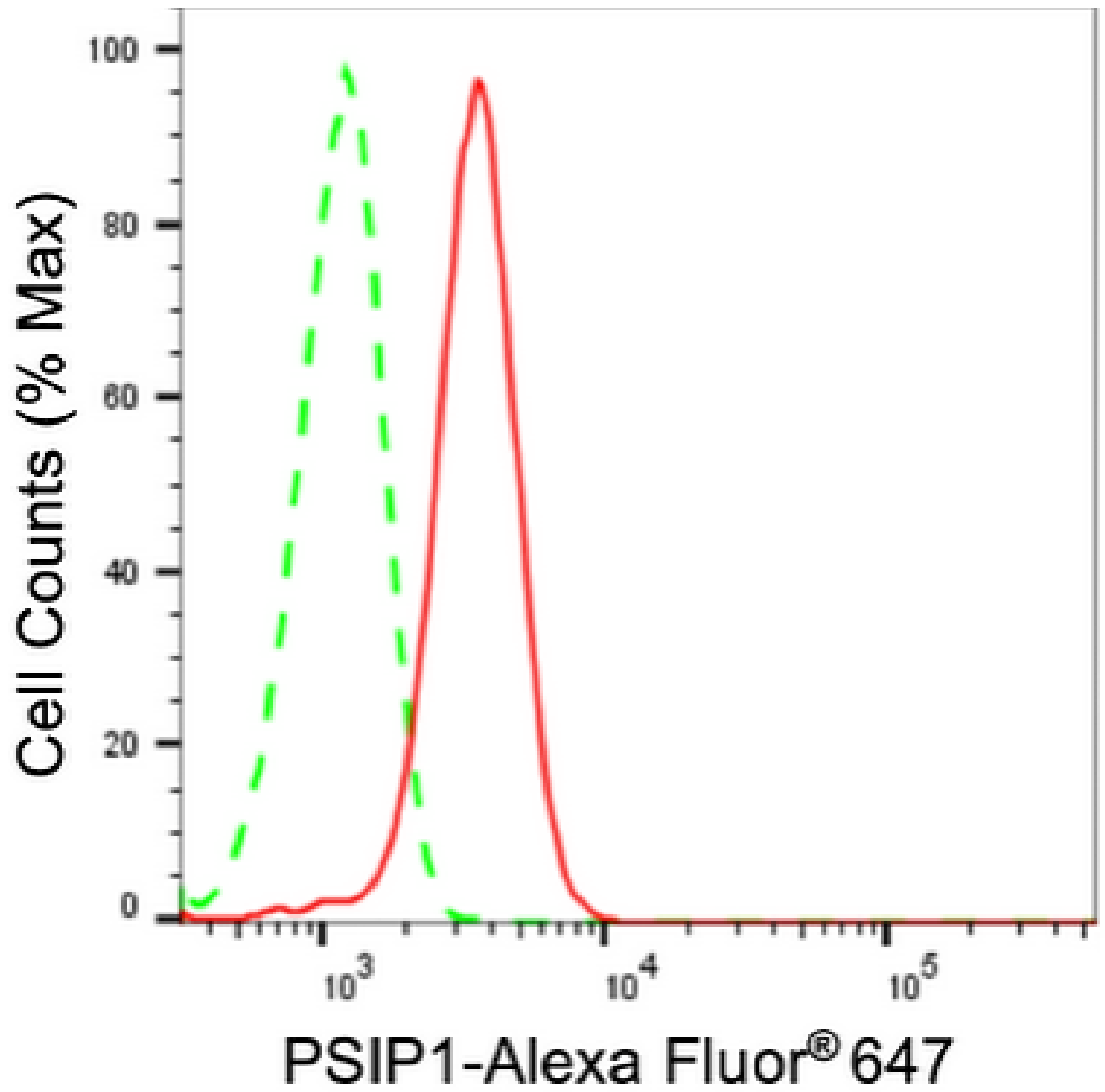
Store at -20 °C for one year.

**Recommended Dilutions**

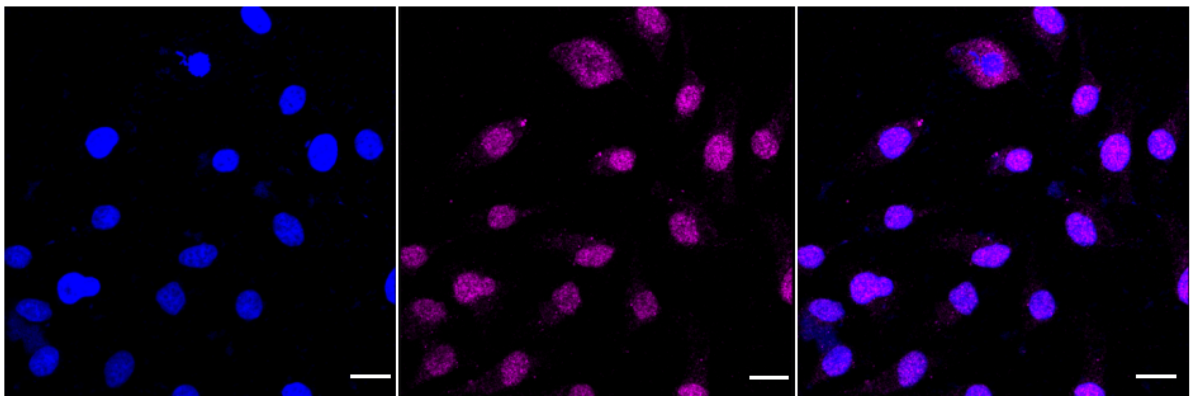
Western Blotting (WB): 1:1,000-1:5,000 Flow Cytometry (FCM): 1:2,000  
Immunocytochemistry (IC): 1:1,000

**Protocols**

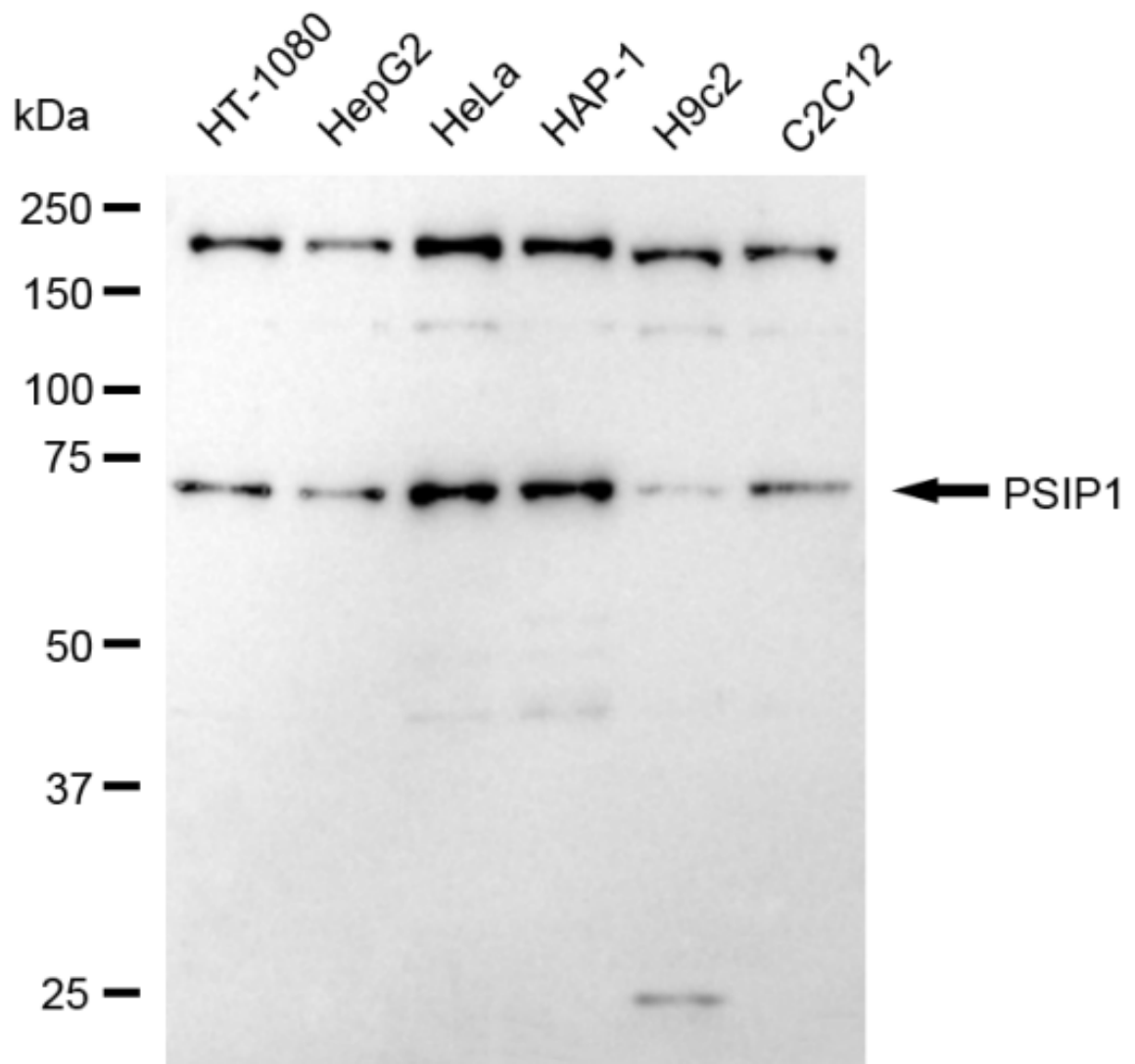
For general and specific antibody protocols please visit our website. Read all instructions before using this product.



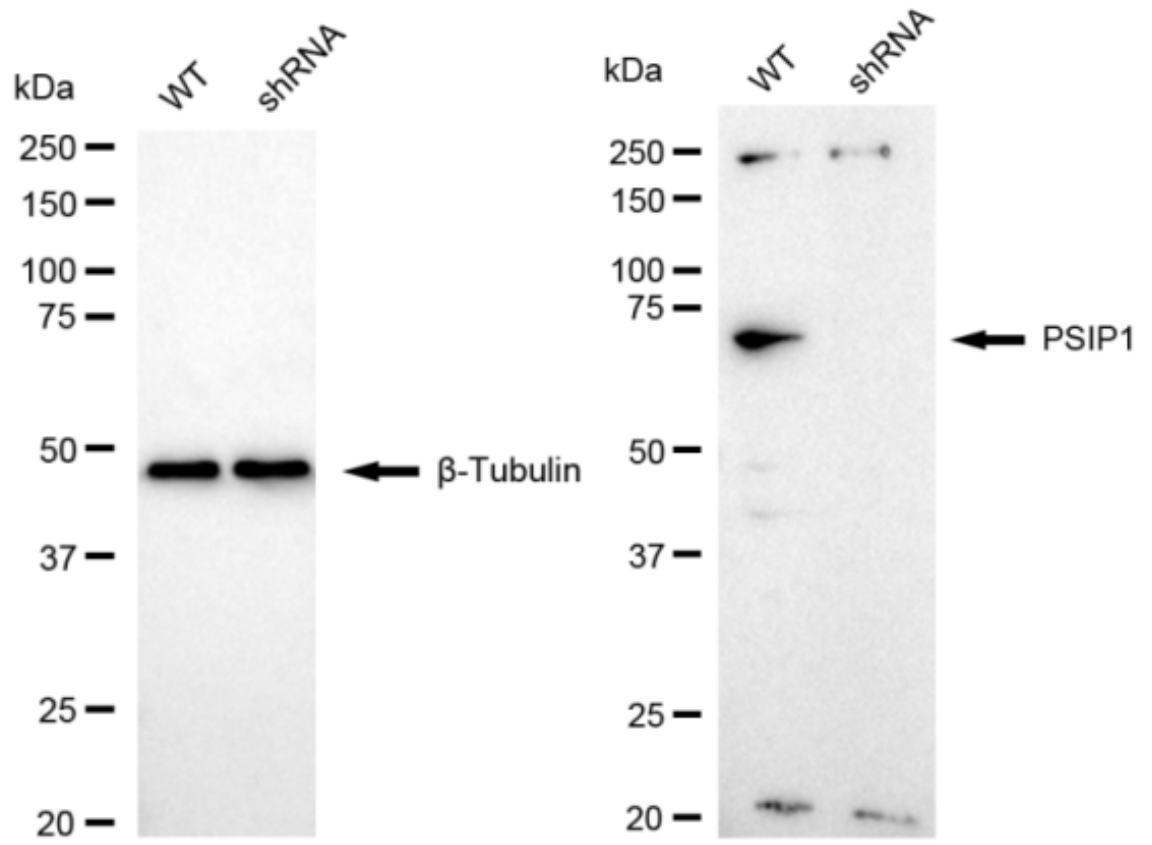
Flow cytometric analysis of PSIP1 expression in HeLa cells using PSIP1 antibody 1:2,000. Green, isotype control; red, PSIP1.



Immunocytochemical staining of HeLa cells with anti-PSIP1 antibody 1:1,000. Nuclei were stained blue with DAPI; PSIP1 was stained magenta with Alexa Fluor® 647. Images were taken using Leica stellaris 5. Protein abundance based on laser Intensity and smart gain: Medium. Scale bar: 20  $\mu$ m.



Western blotting analysis using anti-PSIP1 antibody 1:5,000 and HRP-conjugated goat anti-rabbit secondary antibody 1:20,000 respectively. Image was developed using FeQ™ ECL Substrate Kit .



Western blotting analysis using anti-PSIP1 antibody 1:5,000 and HRP-conjugated goat anti-rabbit secondary antibody 1:20,000 respectively. Image was developed using NaQ™ ECL Substrate Kit .