



SunLong Biotech Co.,LTD  
Tel: 0086-571- 56623320 Fax:0086-571- 56623318  
E-mail:sales@sunlongbiotech.com  
www.sunlongbiotech.com

## **[KD-Validated] Anti-Presenilin 1 Rabbit Monoclonal Antibody**

Cat No.: KD-10741

### **Aliases:**

PSEN1; Presenilin 1; PSNL1; PS-1; PS1; S182; FAD; AD3; Familial Alzheimer Disease; Presenilin-1; Alzheimer Disease 3; Protein S182; EC 3.4.23.-; EC 3.4.23; ACNINV3

### **Background:**

UniProt Entry: [P49768](#);NCBI Gene Entry: [5663](#)

### **Application Information**

Molecular Weight: Predicted, 53 kDa, observed, 20 kDa Clonality: Rabbit monoclonal antibody Clone ID: 24GB4515 Species Reactivity: Human, Mouse, Rat Applications Tested: Western Blotting (WB), Flow Cytometry (FCM)

### **Immunogen**

A synthesized peptide derived from human Presenilin 1

### **Isotype**

Rabbit IgG

### **Storage Buffer**

Supplied in PBS (pH 7.4) containing 50% glycerol, and 0.02% sodium azide.

### **Storage**

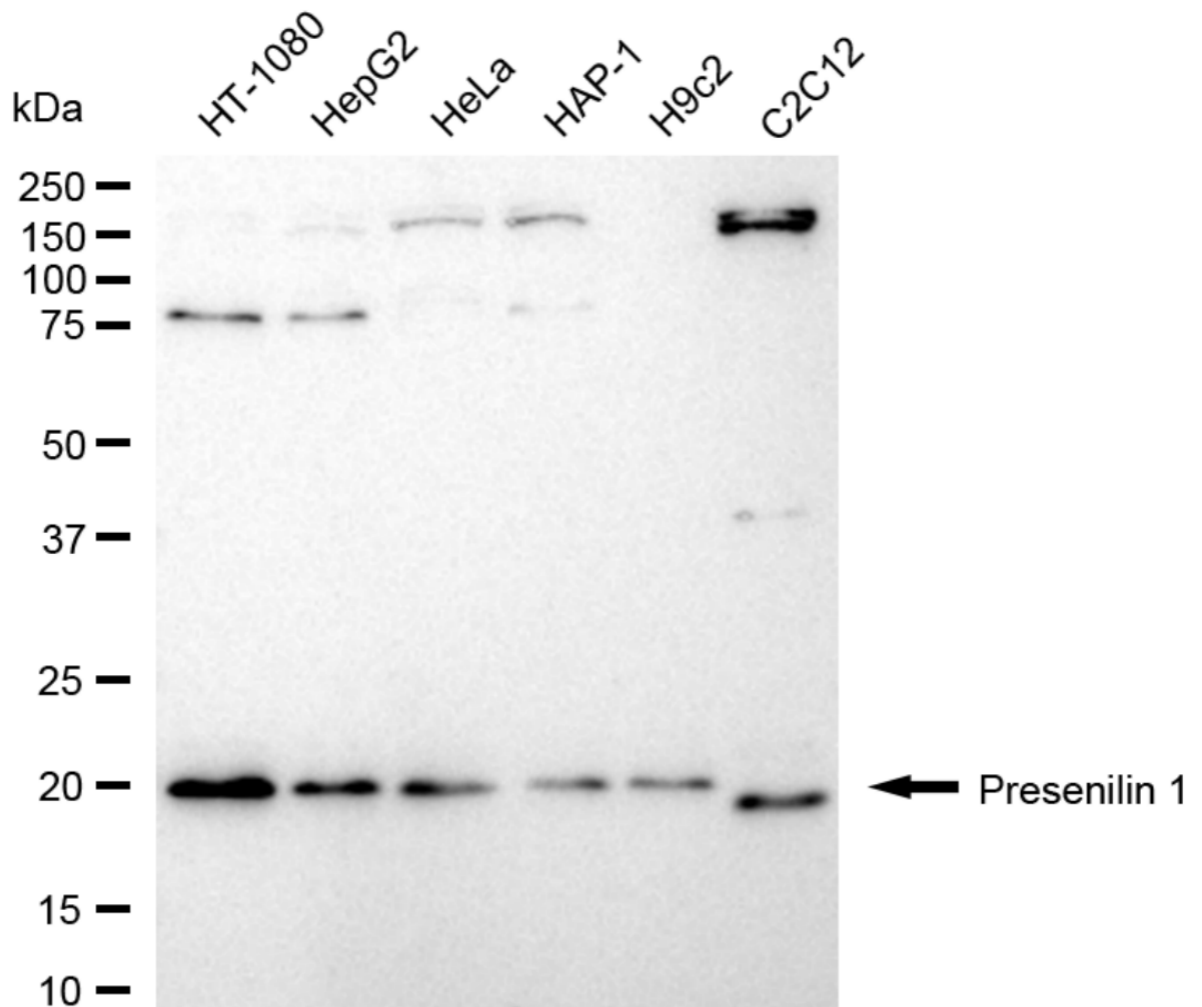
Store at -20 °C for one year.

### Recommended Dilutions

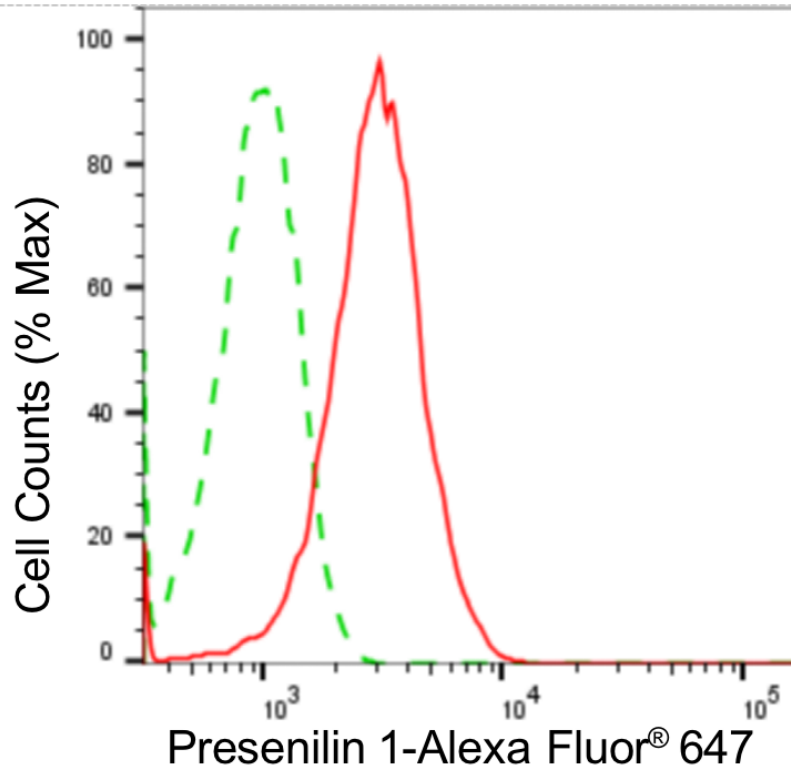
Western Blotting (WB): 1:1,000-1:5,000 Flow Cytometry (FCM): 1:2,000

### Protocols

For general and specific antibody protocols please visit our website. Read all instructions before using this product.



Western blotting analysis using anti-presenilin 1 antibody 1:5,000 and HRP-conjugated goat anti-rabbit secondary antibody 1:20,000 respectively. Image was developed using NaQ™ ECL Substrate Kit 1:5,000 and HRP-conjugated goat anti-rabbit secondary antibody 1:20,000 respectively. Image was developed using FeQ™ ECL Substrate Kit .



Flow cytometric analysis of presenilin 1 expression in HT-1080 cells using anti-presenilin 1 antibody 1:2,000. Green, isotype control; red, presenilin 1.