



SunLong Biotech Co.,LTD  
Tel: 0086-571- 56623320 Fax:0086-571- 56623318  
E-mail:sales@sunlongbiotech.com  
www.sunlongbiotech.com

## **[KD-Validated] Anti-Phospho-Presenilin 1 (Ser310) Rabbit Monoclonal Antibody**

Cat No.: KD-10740

### **Aliases:**

PSEN1; Presenilin 1; PSNL1; PS-1; PS1; S182; FAD; AD3; Familial Alzheimer Disease; Presenilin-1; Alzheimer Disease 3; Protein S182; EC 3.4.23.-; EC 3.4.23; ACNINV3

### **Background:**

UniProt Entry: [P49768](#);NCBI Gene Entry: [5663](#)

### **Application Information**

Molecular Weight: Predicted, 53 kDa, observed, 22 kDa Clonality: Rabbit monoclonal antibody Clone ID: 24GB4510 Species Reactivity: Human Applications Used: Western Blotting (WB), Flow Cytometry (FCM)

### **Immunogen**

A synthesized peptide derived from human Phospho-Presenilin 1 (Ser310)

### **Isotype**

Rabbit IgG

### **Storage Buffer**

Supplied in PBS (pH 7.4) containing 50% glycerol, and 0.02% sodium azide.

### **Storage**

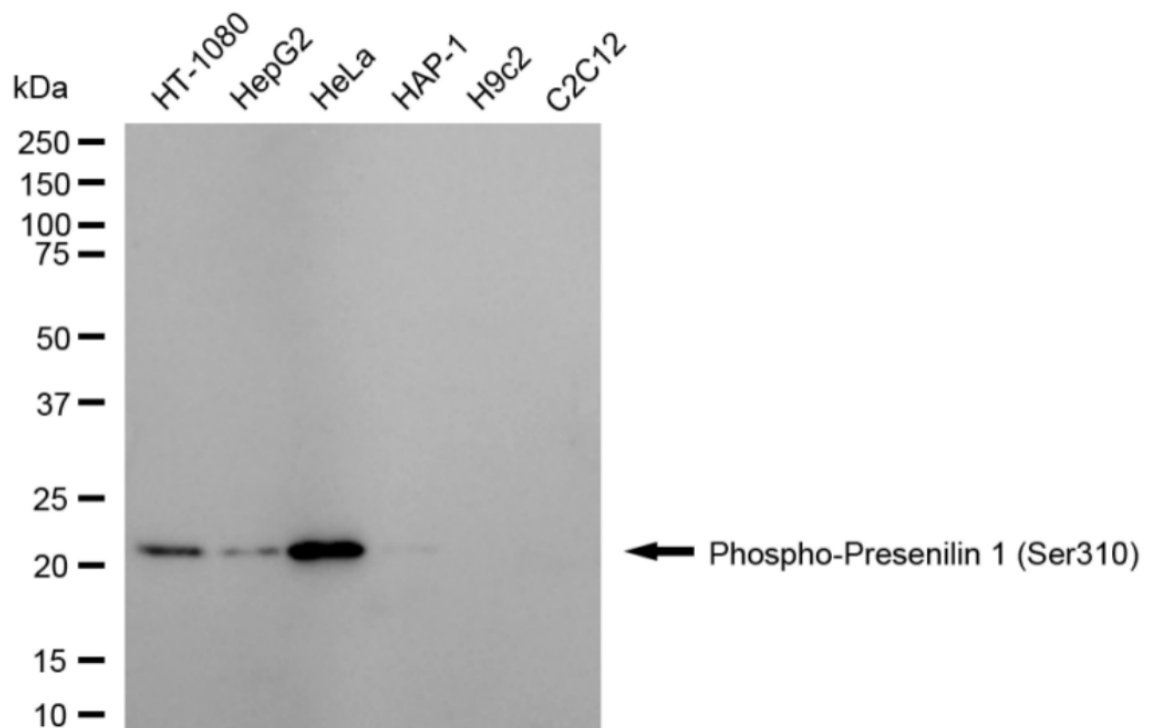
Store at -20 °C for one year.

### Recommended Dilutions

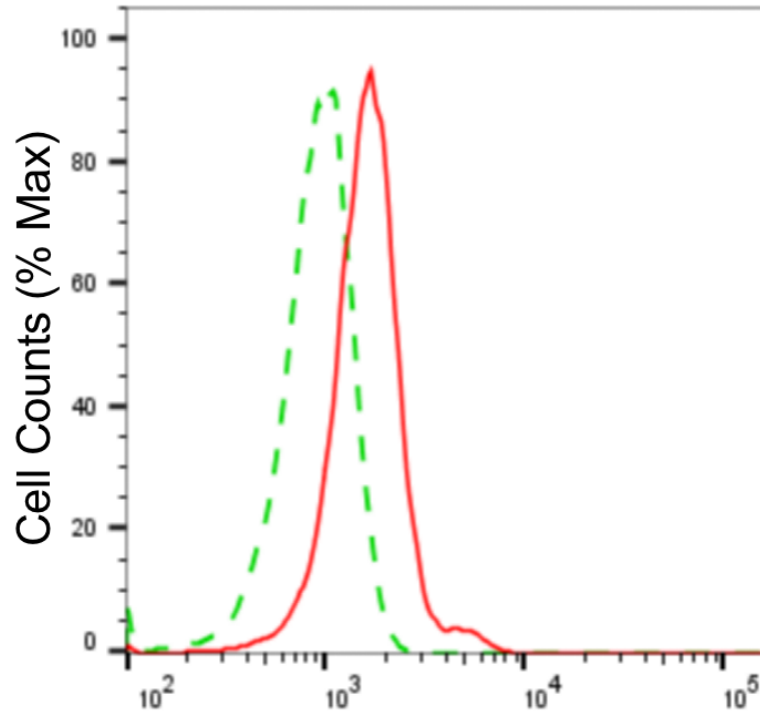
Western Blotting (WB): 1:1,000-1:5,000 Flow Cytometry (FCM): 1:2,000

### Protocols

For general and specific antibody protocols please visit our website. Read all instructions before using this product.

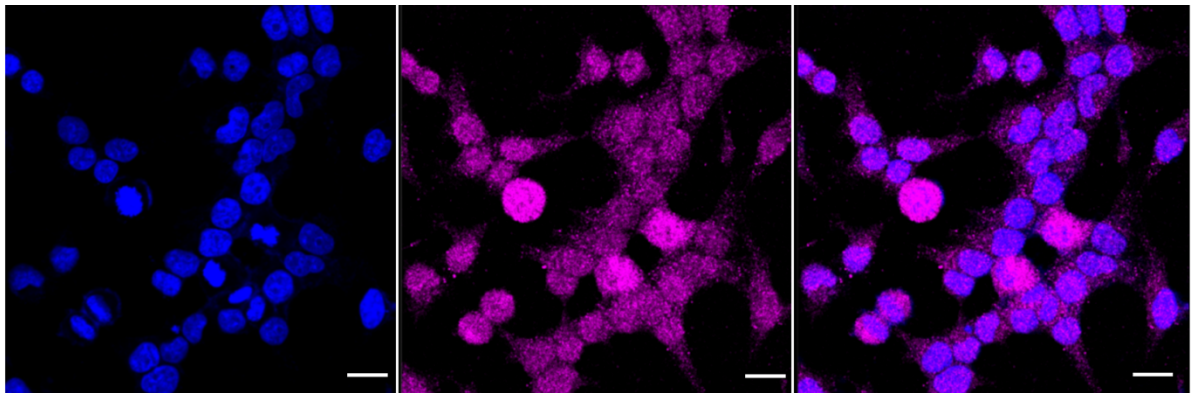


Western blotting analysis using anti-phospho-presenilin 1 (Ser310) antibody 1:5,000 and HRP-conjugated goat anti-rabbit secondary antibody 1:20,000 respectively. Image was developed using NaQ™ ECL Substrate Kit 1:5,000 and HRP-conjugated goat anti-rabbit secondary antibody 1:20,000 respectively. Image was developed using FeQ™ ECL Substrate Kit . PSEN1, presenilin 1.



### Phospho-Presenilin 1 (Ser310)-Alexa Fluor<sup>®</sup> 647

Flow cytometric analysis of Phospho-Presenilin 1 (Ser310) expression in HeLa cells using anti-Phospho-Presenilin 1 (Ser310) antibody 1:2,000. Green, isotype control; red, Phospho-Presenilin 1 (Ser310).



Immunocytochemical staining of HeLa cells with Phospho-Presenilin 1 (Ser310) antibody (1:1000) . Nuclei were stained blue with DAPI; Phospho-Presenilin 1 (Ser310) was stained magenta with Alexa Fluor<sup>®</sup> 647. Images were taken using Leica stellaris 5. Protein abundance based on laser Intensity and smart gain: Medium. Scale bar, 20  $\mu$ m.