



SunLong Biotech Co.,LTD
Tel: 0086-571- 56623320 Fax:0086-571- 56623318
E-mail:sales@sunlongbiotech.com
www.sunlongbiotech.com

[KD-Validated] Anti-Pre-MRNA Processing Factor 4 Rabbit Monoclonal Antibody

Cat No.: KD-10738

Aliases:

Pre-MRNA Processing Factor 4; PRP4; U4/U6 Small Nuclear Ribonucleoprotein Prp4; SNRNP60; HPRP4P; Prp4p; HPRP4; PRP4/STK/WD Splicing Factor; U4/U6 SnRNP 60 KDa Protein; WD Splicing Factor Prp4; PRP4 Homolog; PRP4 Pre-MRNA Processing Factor 4 Homolog (Yeast); PRP4 Pre-MRNA Processing Factor 4 Homolog; HPrp4; RP70

Background:

UniProt Entry: [O43172](#);NCBI Gene Entry: [9128](#)

Application Information

Molecular Weight: Predicted, 58 kDa, observed, 58 kDa Clonality: Rabbit monoclonal antibody Clone ID: 24GB975 Species Reactivity: Human, Mouse, Rat Applications Tested: Western Blotting (WB), Flow Cytometry (FCM), Immunocytochemistry (IC)

Immunogen

A synthesized peptide derived from human PRPF4

Isotype

Rabbit IgG

Storage Buffer

Supplied in PBS (pH 7.4) containing 50% glycerol, and 0.02% sodium azide.

Storage

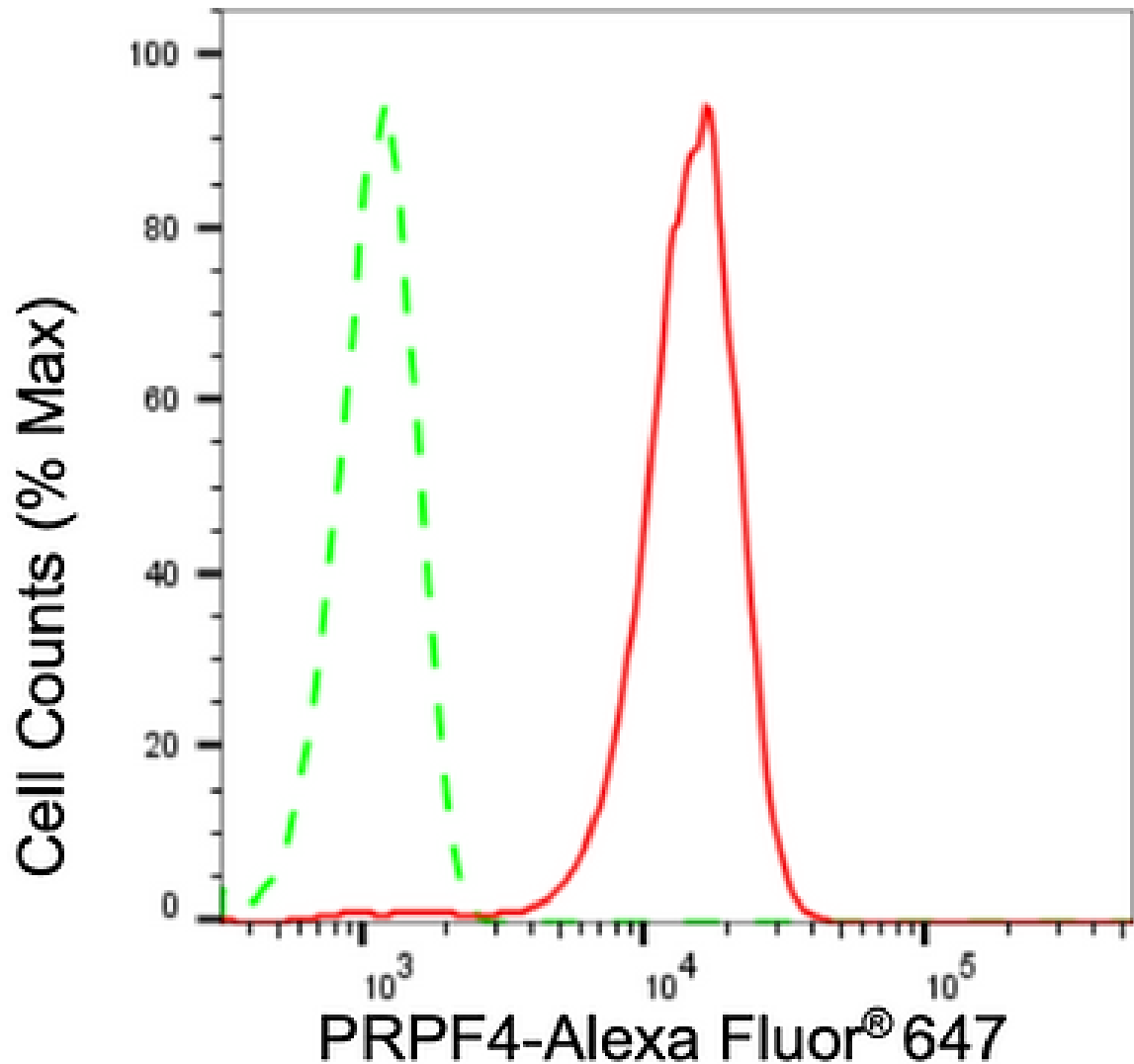
Store at -20 °C for one year.

Recommended Dilutions

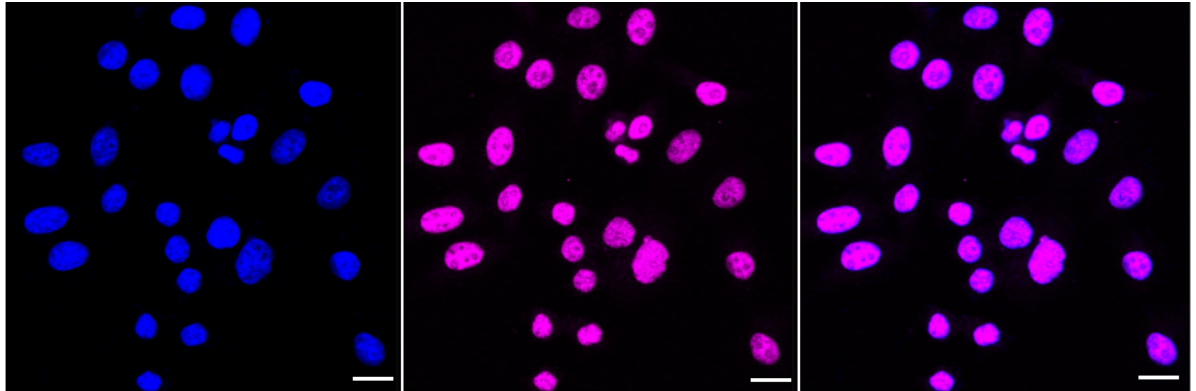
Western Blotting (WB): 1:1,000-1:5,000 Flow Cytometry (FCM): 1:2,000
Immunocytochemistry (IC): 1:1,000

Protocols

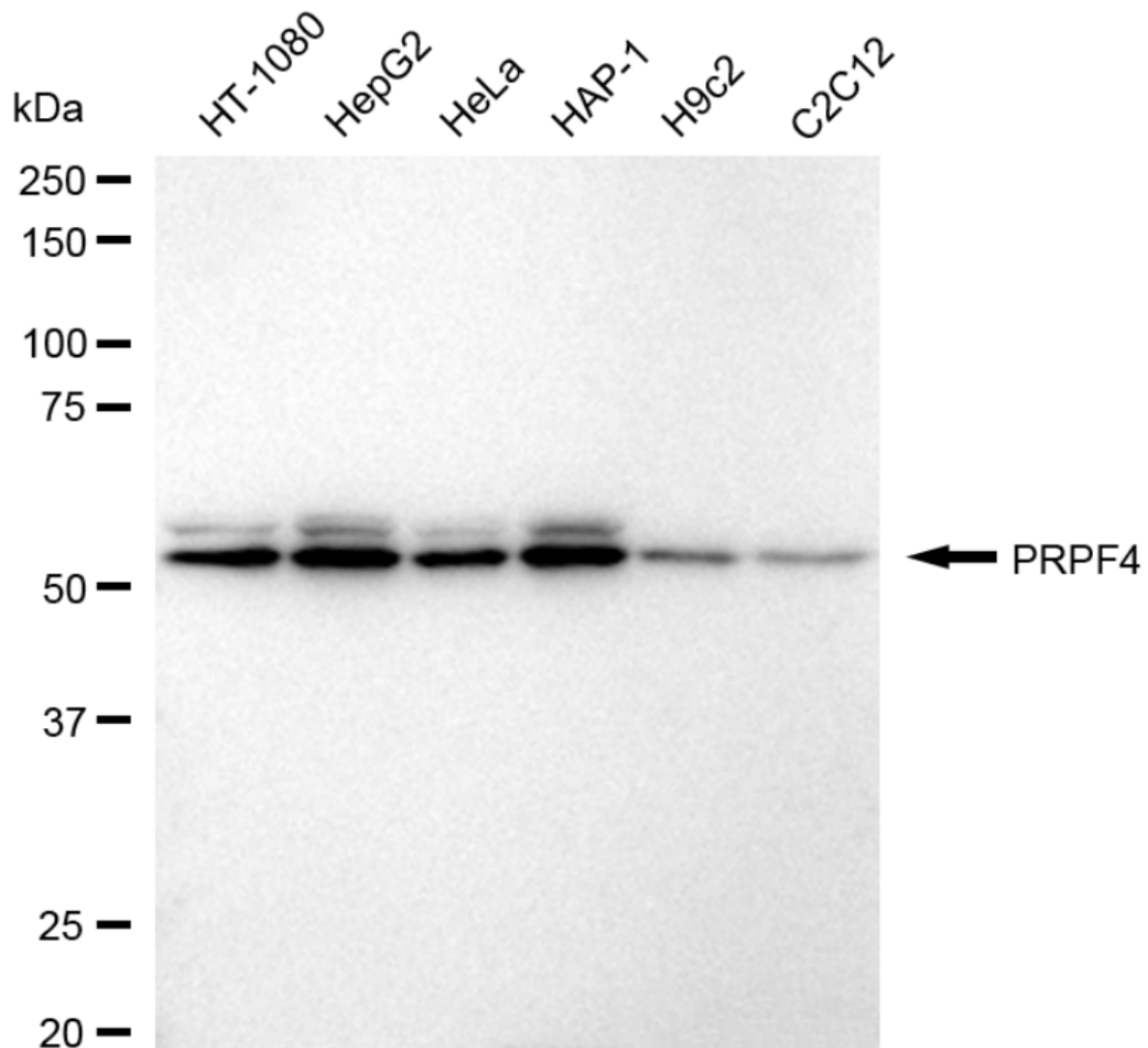
For general and specific antibody protocols please visit our website. Read all instructions before using this product.



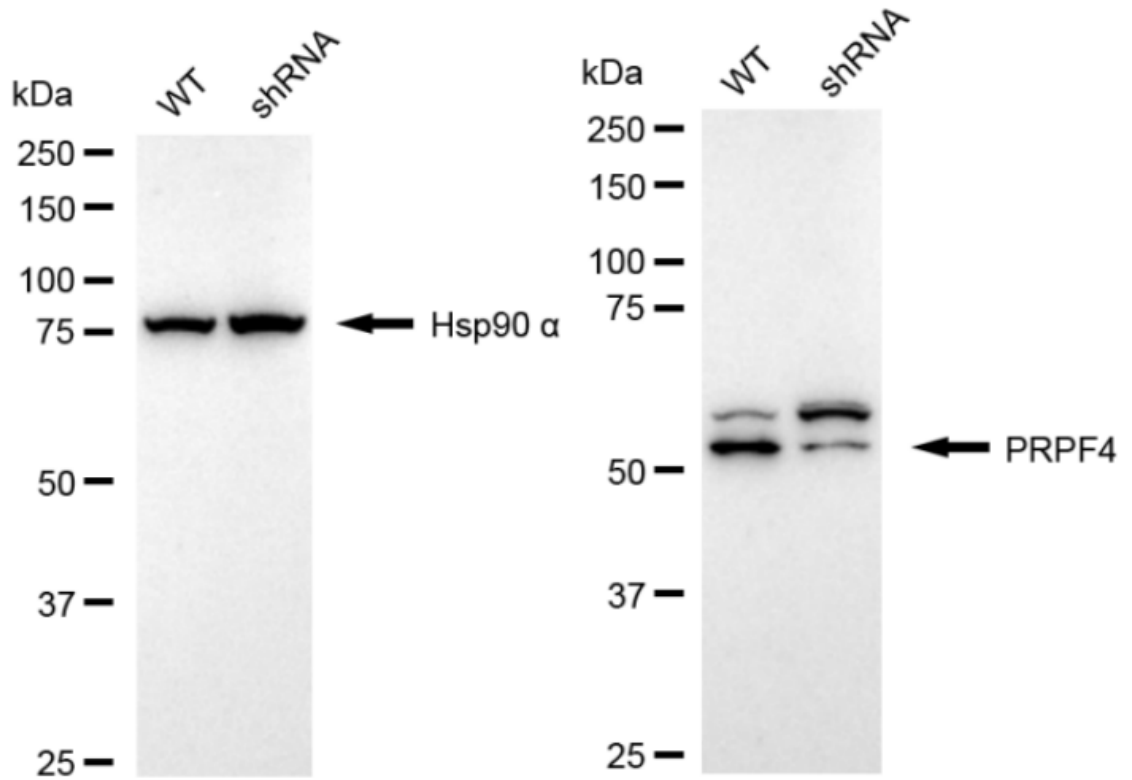
Flow cytometric analysis of PRPF4 expression in HepG2 cells using anti-PRPF4 antibody 1:2,000. Green, isotype control; red, PRPF4.



Immunocytochemical staining of HepG2 cells with anti-PRPF4 antibody 1:1,000. Nuclei were stained blue with DAPI; PRPF4 was stained magenta with Alexa Fluor® 647. Images were taken using Leica stellaris 5. Protein abundance based on laser Intensity and smart gain: High. Scale bar: 20 μ m.



Western blotting analysis using anti-PRPF4 antibody 1:5,000 and HRP-conjugated goat anti-rabbit secondary antibody 1:20,000 respectively. Image was developed using FeQ™ ECL Substrate Kit .



Western blotting analysis using anti-PRPF4 antibody 1:5,000 and HRP-conjugated goat anti-rabbit secondary antibody 1:20,000 respectively. Image was developed using NaQ™ ECL Substrate Kit .