



SunLong Biotech Co.,LTD
Tel: 0086-571- 56623320 Fax:0086-571- 56623318
E-mail:sales@sunlongbiotech.com
www.sunlongbiotech.com

[KD-Validated] Anti-Protein arginine methyltransferase 7 Rabbit Monoclonal Antibody

Cat No.: KD-10737

Aliases:

PRMT7; Protein Arginine Methyltransferase 7; KIAA1933; [Myelin Basic Protein]-Arginine N-Methyltransferase PRMT7; Histone-Arginine N-Methyltransferase PRMT7; Protein Arginine N-Methyltransferase 7; FLJ10640; EC 2.1.1.321; EC 2.1.1 48; SBIDDS

Background:

UniProt Entry: [Q9NVM4](#);NCBI Gene Entry: [54496](#)

Application Information

Molecular Weight: Predicted, 78 kDa, observed, 75 kDa Clonality: Rabbit monoclonal antibody Clone ID: 23GB2380 Species Reactivity: Human, Mouse, Rat Applications Tested: Western Blotting (WB), Flow Cytometry (FCM), Immunocytochemistry (IC)

Immunogen

A synthesized peptide derived from human PRMT7

Isotype

Rabbit IgG

Storage Buffer

Supplied in PBS (pH 7.4) containing 50% glycerol, and 0.02% sodium azide.

Storage

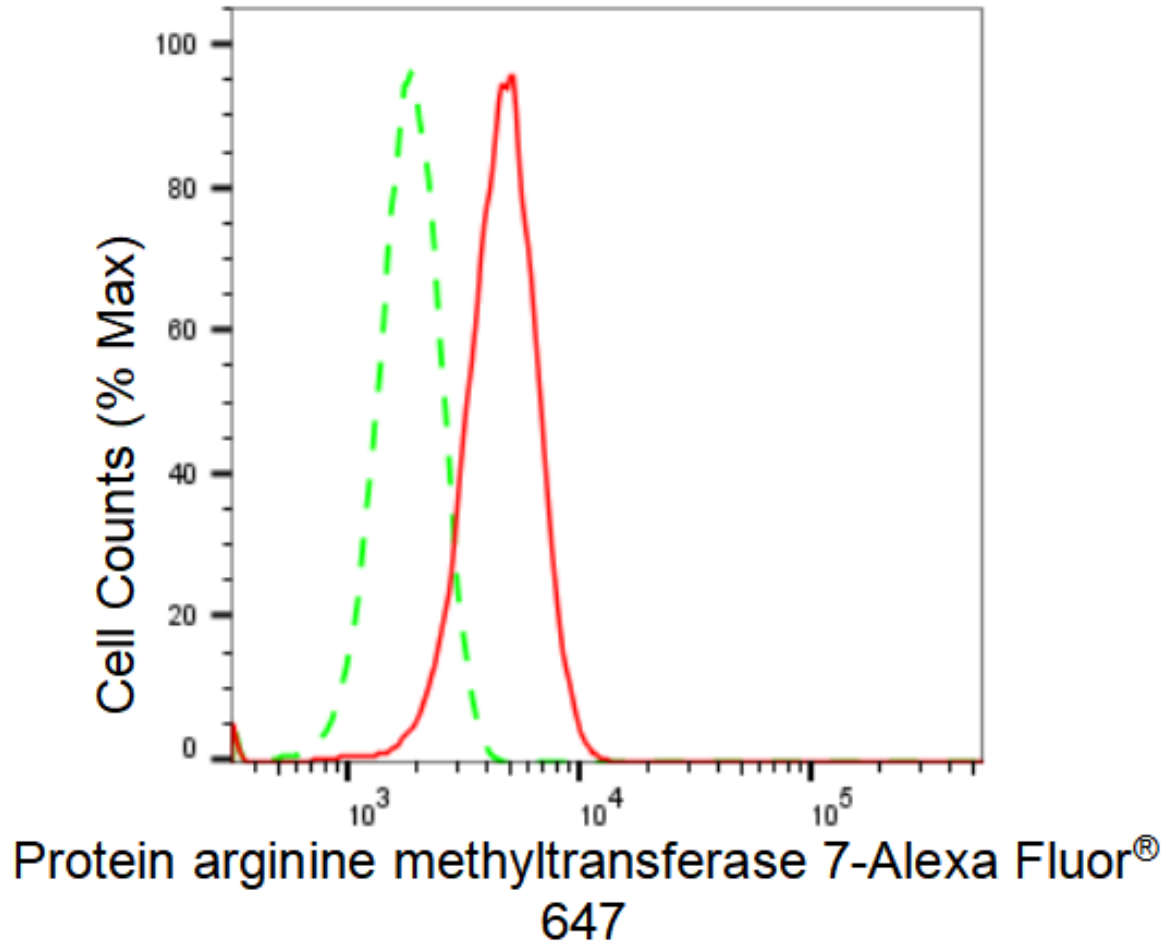
Store at -20 °C for one year.

Recommended Dilutions

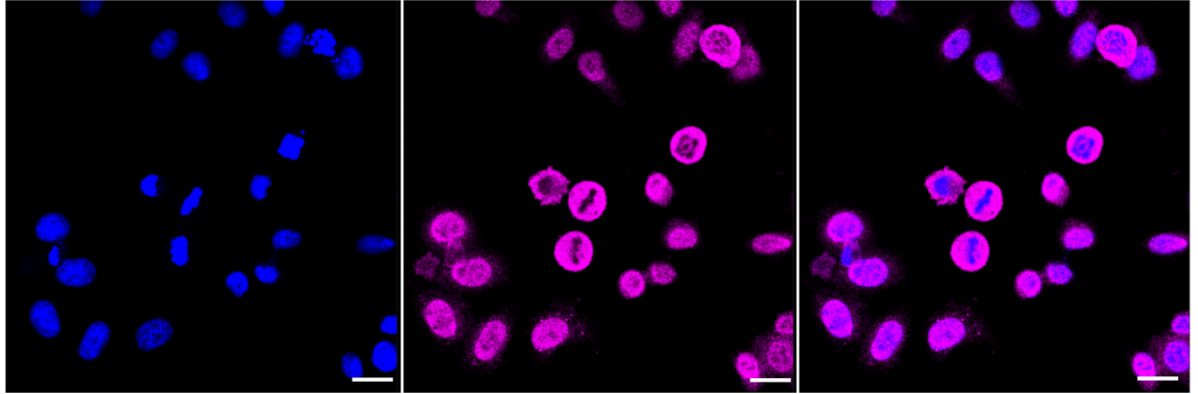
Western Blotting (WB): 1:1,000-1:5,000 Flow Cytometry (FCM): 1:2,000
Immunocytochemistry (IC): 1:1,000

Protocols

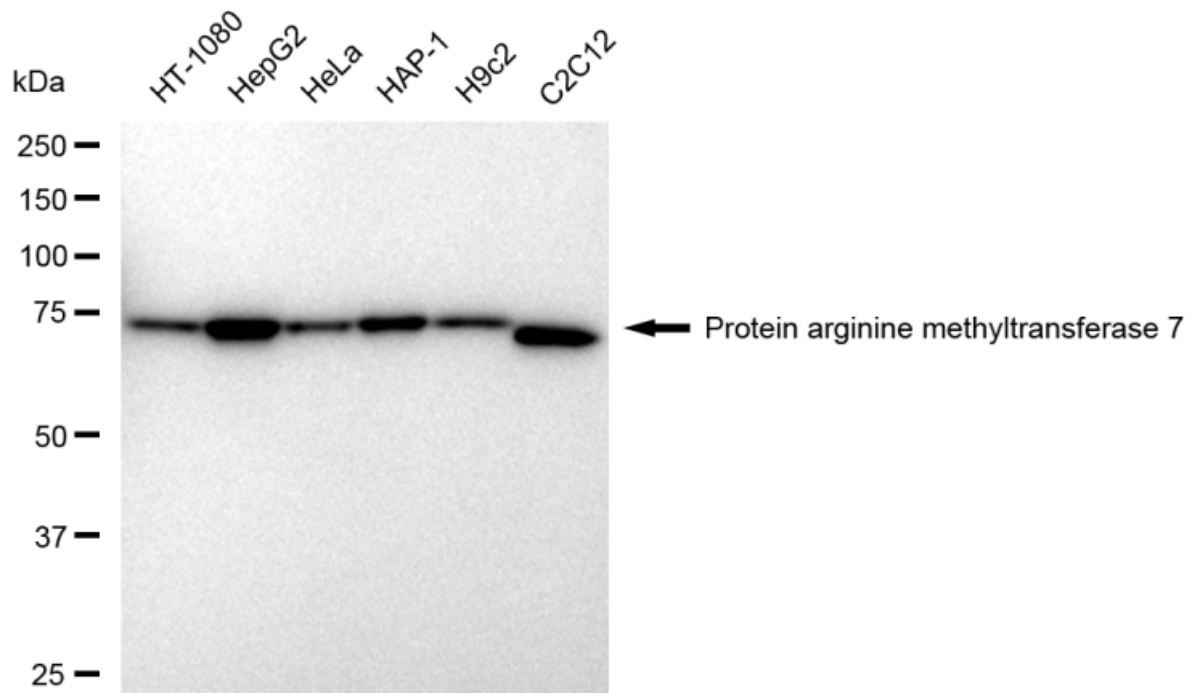
For general and specific antibody protocols please visit our website. Read all instructions before using this product.



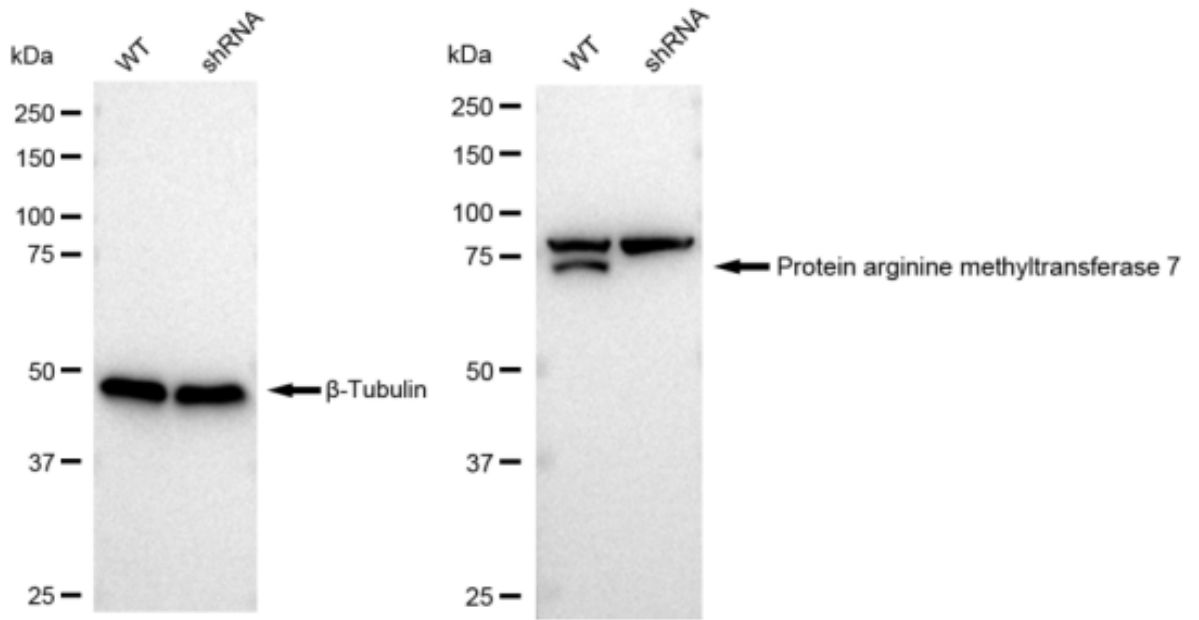
Flow cytometric analysis of Protein arginine methyltransferase 7 expression in HepG2 cells using Protein arginine methyltransferase 7 antibody 1:2,000. Green, isotype control; red, Protein arginine methyltransferase 7.



Immunocytochemical staining of HepG2 cells with Protein arginine methyltransferase 7 antibody 1:1,000. Nuclei were stained blue with DAPI; Protein arginine methyltransferase 7 was stained magenta with Alexa Fluor® 647. Images were taken using Leica stellaris 5. Protein abundance based on laser Intensity and smart gain: Medium. Scale bar: 20 μ m.



Western blotting analysis using anti-Protein arginine methyltransferase 7 antibody 1:5,000 and HRP-conjugated goat anti-rabbit secondary antibody 1:20,000 respectively. Image was developed using FeQ™ ECL Substrate Kit .



Western blotting analysis using anti-Protein arginine methyltransferase 7 antibody 1:5,000 and HRP-conjugated goat anti-rabbit secondary antibody 1:20,000 respectively. Image was developed using FeQ™ ECL Substrate Kit .