



SunLong Biotech Co.,LTD
Tel: 0086-571- 56623320 Fax:0086-571- 56623318
E-mail:sales@sunlongbiotech.com
www.sunlongbiotech.com

[KD-Validated] Anti-PRMT6 Rabbit Monoclonal Antibody

Cat No.: KD-10736

Aliases:

Protein Arginine Methyltransferase 6; HRMT1L6; Heterogeneous Nuclear Ribonucleoprotein Methyltransferase-Like Protein 6; Histone-Arginine N-Methyltransferase PRMT6; Protein Arginine N-Methyltransferase 6; FLJ10559; HMT1 HnRNP Methyltransferase-Like 6 (*S. Cerevisiae*); HMT1 HnRNP Methyltransferase-Like 6; EC 2.1.1.319

Background:

UniProt Entry: [Q96LA8](#);NCBI Gene Entry: [55170](#)

Application Information

Molecular Weight: Predicted, 42 kDa, observed, 42 kDa Clonality: Rabbit monoclonal antibody Clone ID: 24GB1585 Species Reactivity: Human, Mouse, Rat Applications Tested: Western Blotting (WB), Flow Cytometry (FCM)

Immunogen

A synthesized peptide derived from human PRMT6

Isotype

Rabbit IgG

Storage Buffer

Supplied in PBS (pH 7.4) containing 50% glycerol, and 0.02% sodium azide.

Storage

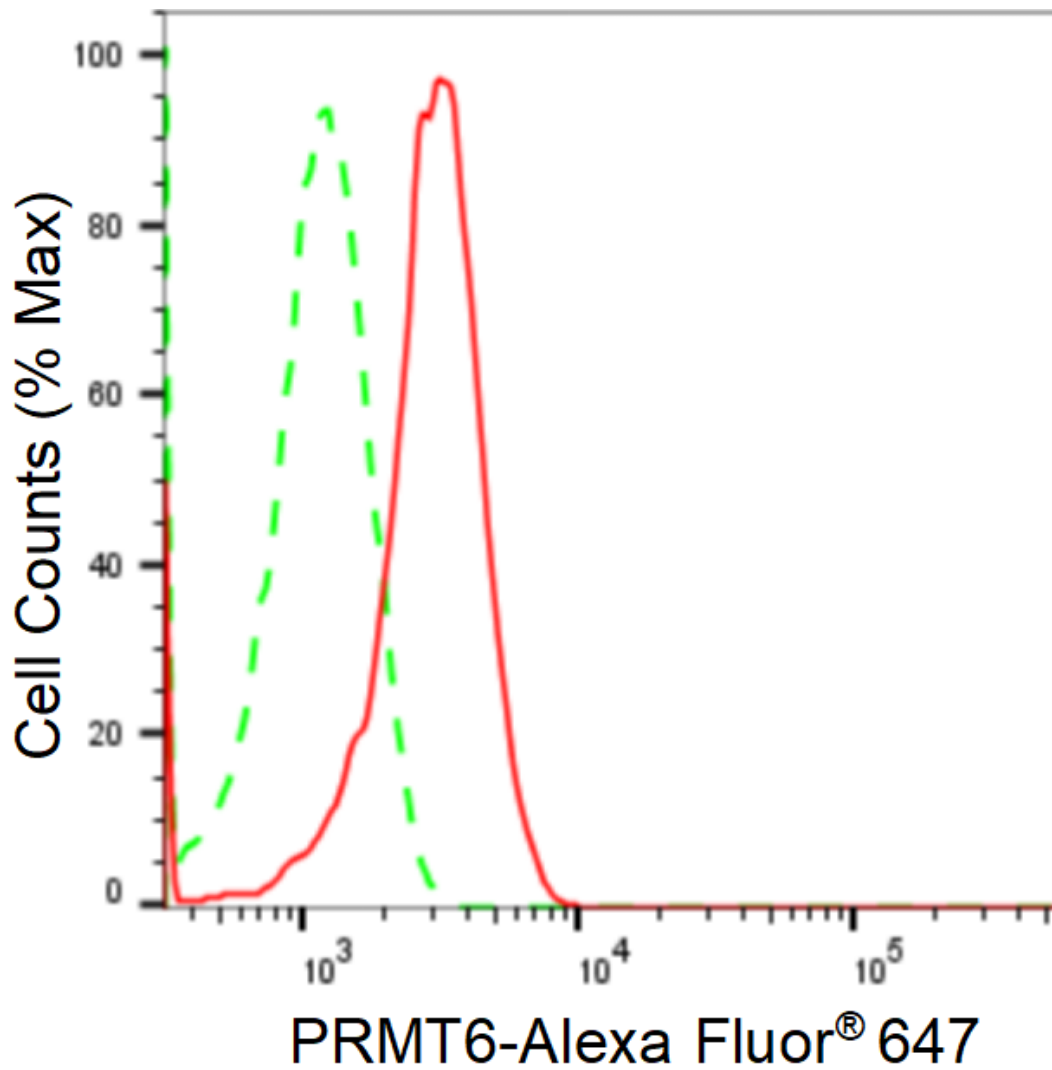
Store at -20 °C for one year.

Recommended Dilutions

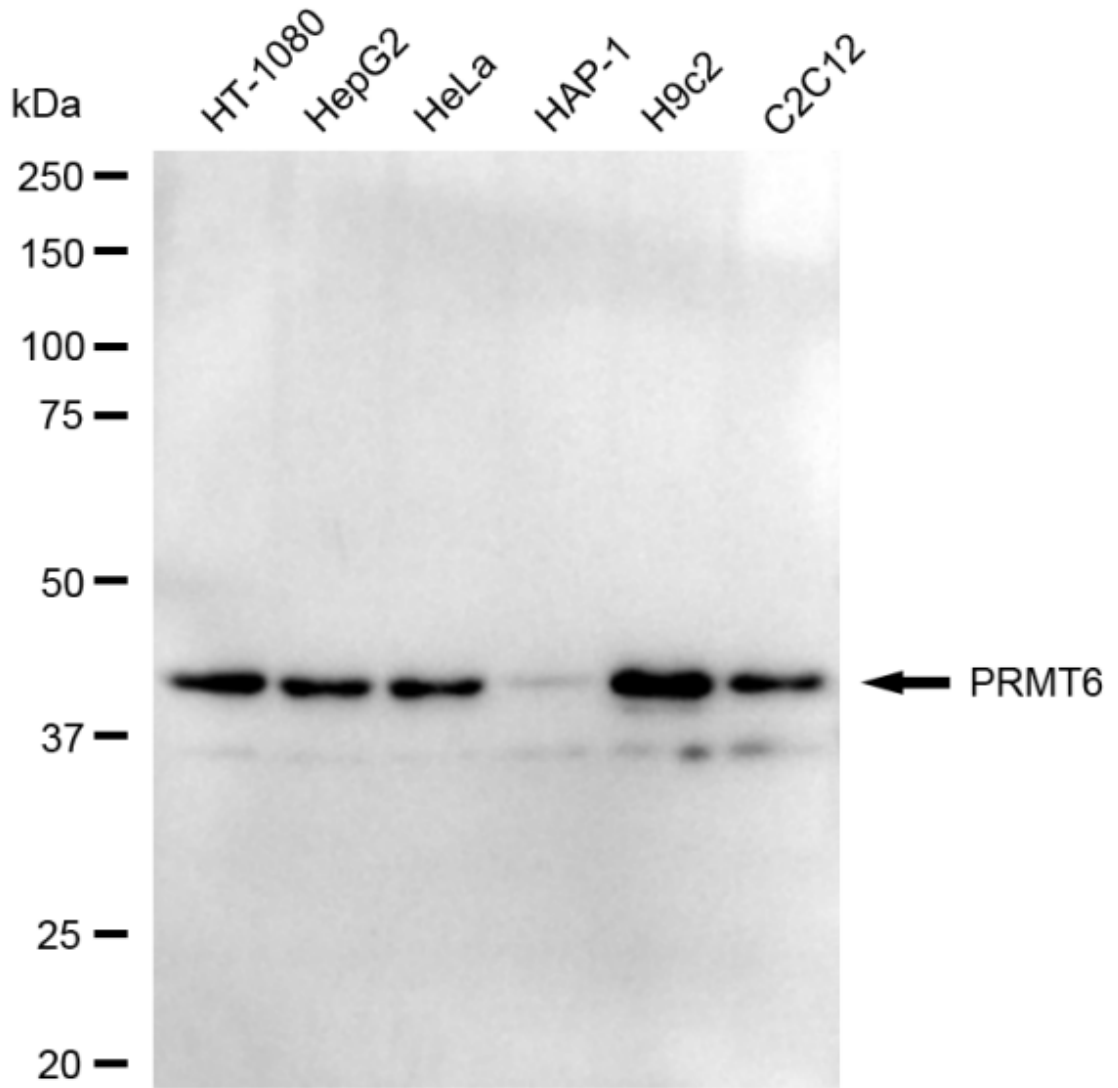
Western Blotting (WB): 1:1,000-1:5,000 Flow Cytometry (FCM): 1:2,000

Protocols

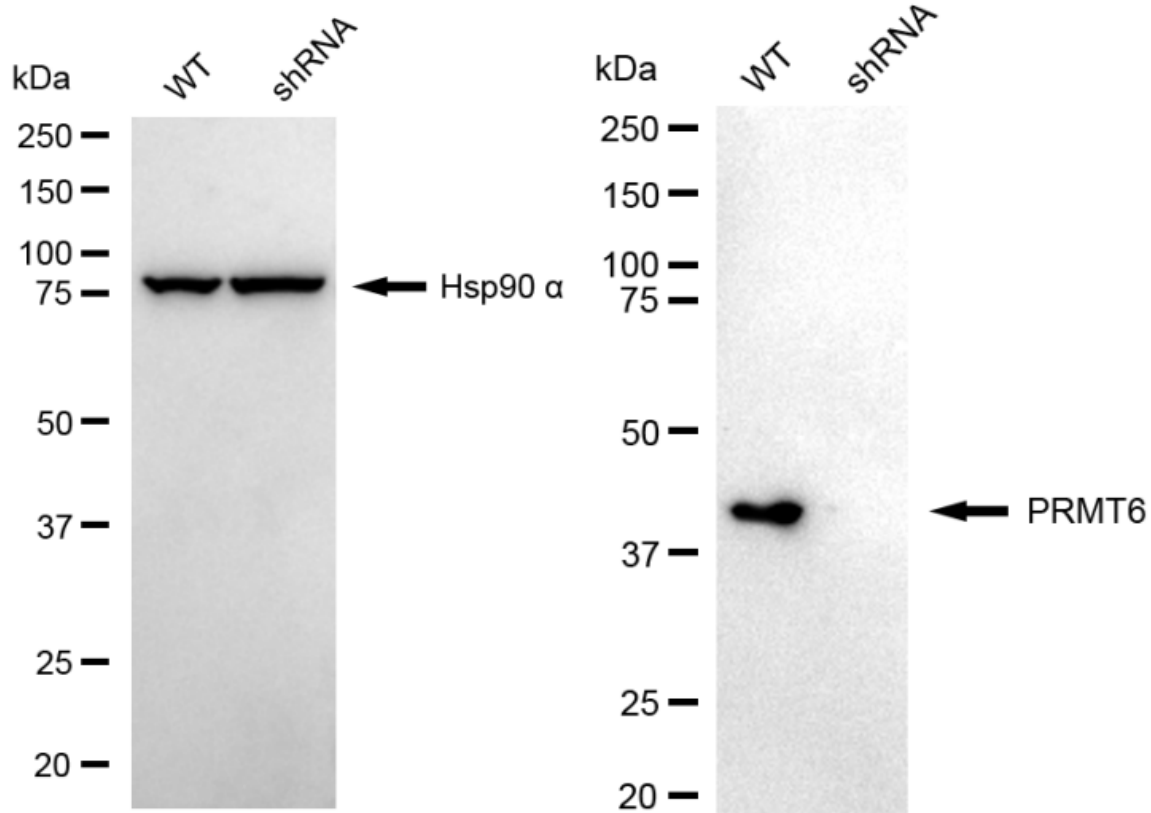
For general and specific antibody protocols please visit our website. Read all instructions before using this product.



Flow cytometric analysis of PRMT6 expression in H9c2 cells using anti-PRMT6 antibody 1:2,000. Green, isotype control; red, PRMT6.



Western blotting analysis using anti-PRMT6 antibody 1:5,000 and HRP-conjugated goat anti-rabbit secondary antibody 1:20,000 respectively. Image was developed using FeQ™ ECL Substrate Kit .



Western blotting analysis using anti-PRMT6 antibody 1:5,000 and HRP-conjugated goat anti-rabbit secondary antibody 1:20,000 respectively. Image was developed using NaQ™ ECL Substrate Kit .