



SunLong Biotech Co.,LTD  
Tel: 0086-571- 56623320 Fax:0086-571- 56623318  
E-mail:sales@sunlongbiotech.com  
www.sunlongbiotech.com

## **[KD-Validated] Anti-PRKRA Rabbit Monoclonal Antibody**

Cat No.: KD-10733

### **Aliases:**

PRKRA; Protein Activator Of Interferon Induced Protein Kinase EIF2AK2; PACT; RAX; Protein Activator Of The Interferon-Induced Protein Kinase; PKR-Associated Protein X ; HSD14 ; DYT16; Interferon-Inducible Double-Stranded RNA-Dependent Protein Kinase Activator A; Protein Kinase, Interferon-Inducible Double-Stranded RNA-Dependent Activator; PKR-Associating Protein X; Protein Kinase, Interferon-Inducible Double Stranded RNA Dependent Activator

### **Background:**

UniProt Entry: [O75569](#);NCBI Gene Entry: [8575](#)

### **Application Information**

Molecular Weight: Predicted, 34 kDa, observed, 34 kDa Clonality: Rabbit monoclonal antibody Clone ID: 23GB2340 Species Reactivity: Human, Mouse, Rat Applications Tested: Western Blotting (WB), Immunocytochemistry (IC)

### **Immunogen**

A synthesized peptide derived from human PRKRA

### **Isotype**

Rabbit IgG

### **Storage Buffer**

Supplied in PBS (pH 7.4) containing 50% glycerol, and 0.02% sodium azide.

#### **Storage**

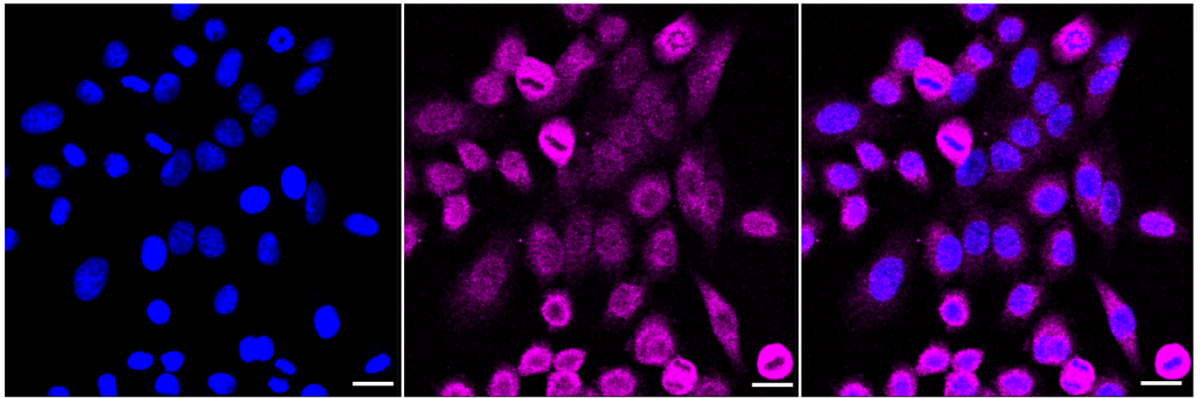
Store at -20 °C for one year.

#### **Recommended Dilutions**

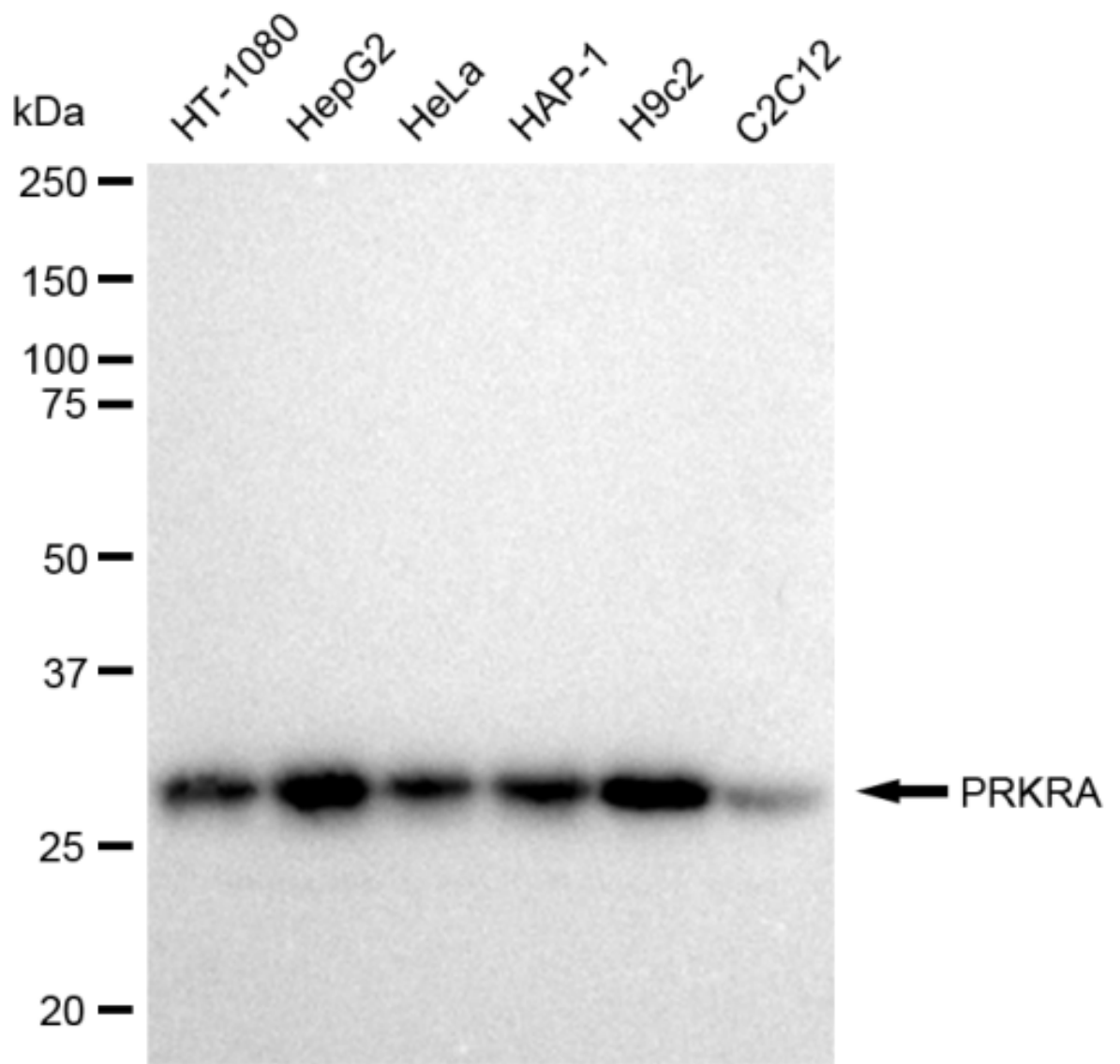
Western Blotting (WB): 1:1,000-1:5,000 Immunocytochemistry (IC): 1:1,000

#### **Protocols**

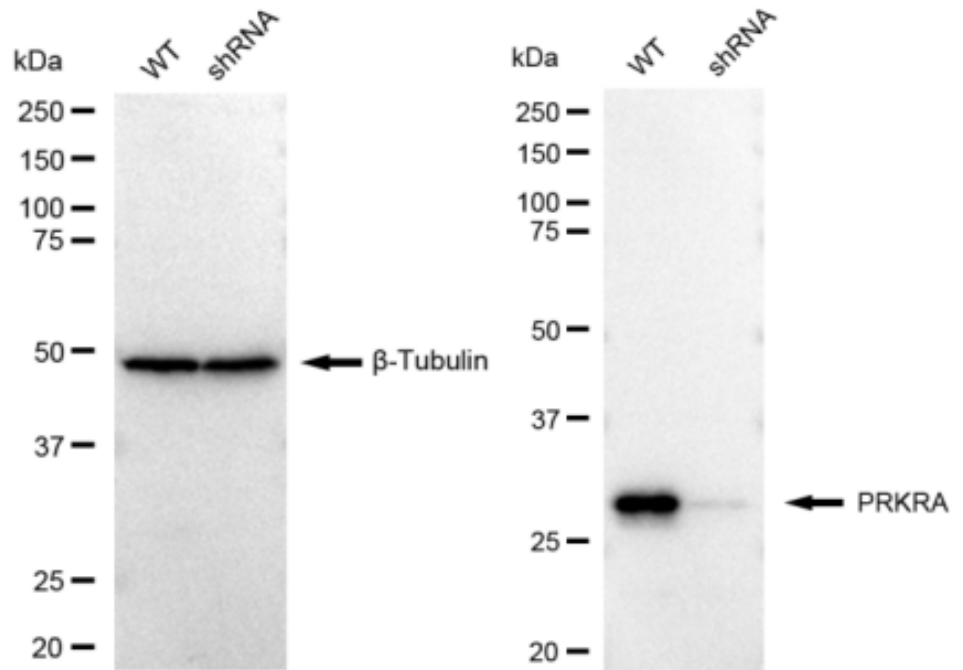
For general and specific antibody protocols please visit our website. Read all instructions before using this product.



Immunocytochemical staining of HepG2 cells with PRKRA antibody 1:1,000. Nuclei were stained blue with DAPI; PRKRA was stained magenta with Alexa Fluor® 647. Images were taken using Leica stellaris 5. Protein abundance based on laser Intensity and smart gain: Medium. Scale bar: 20 µm.



Western blotting analysis using anti-PRKRA antibody 1:5,000 and HRP-conjugated goat anti-rabbit secondary antibody 1:20,000 respectively. Image was developed using FeQ™ ECL Substrate Kit .



Western blotting analysis using anti-PRKRA antibody 1:5,000 and HRP-conjugated goat anti-rabbit secondary antibody 1:20,000 respectively. Image was developed using FeQ™ ECL Substrate Kit .