



SunLong Biotech Co.,LTD  
Tel: 0086-571- 56623320 Fax:0086-571- 56623318  
E-mail:sales@sunlongbiotech.com  
www.sunlongbiotech.com

## [KD-Validated] Anti-DNA PKcs Rabbit Monoclonal Antibody

Cat No.: KD-10732

### Aliases:

PRKDC; Protein Kinase, DNA-Activated, Catalytic Subunit; DNPK1; P460; DNA-Dependent Protein Kinase Catalytic Subunit; DNA-PKcs; DNA-PKC; DNAPK; XRCC7; HYRC1; P350; HYRC; Protein Kinase, DNA-Activated, Catalytic Polypeptide; DNA-PK Catalytic Subunit; EC 2.7.11.1; DNAPKc; Hyper-Radiosensitivity Of Murine Scid Mutation, Complementing 1; DNA-PKCS; DNAPKC; IMD26

### Background:

UniProt Entry: [P78527](#);NCBI Gene Entry: [5591](#)

### Application Information

Molecular Weight: Predicted, 469 kDa, observed, 469 kDa Clonality: Rabbit monoclonal antibody Clone ID: 23GB2055 Species Reactivity: Human Applications Used: Western Blotting (WB), Flow Cytometry (FCM), Immunocytochemistry (IC)

### Immunogen

A synthesized peptide derived from human DNA-PKcs

### Isotype

Rabbit IgG

### Storage Buffer

Supplied in PBS (pH 7.4) containing 50% glycerol, and 0.02% sodium azide.

#### Storage

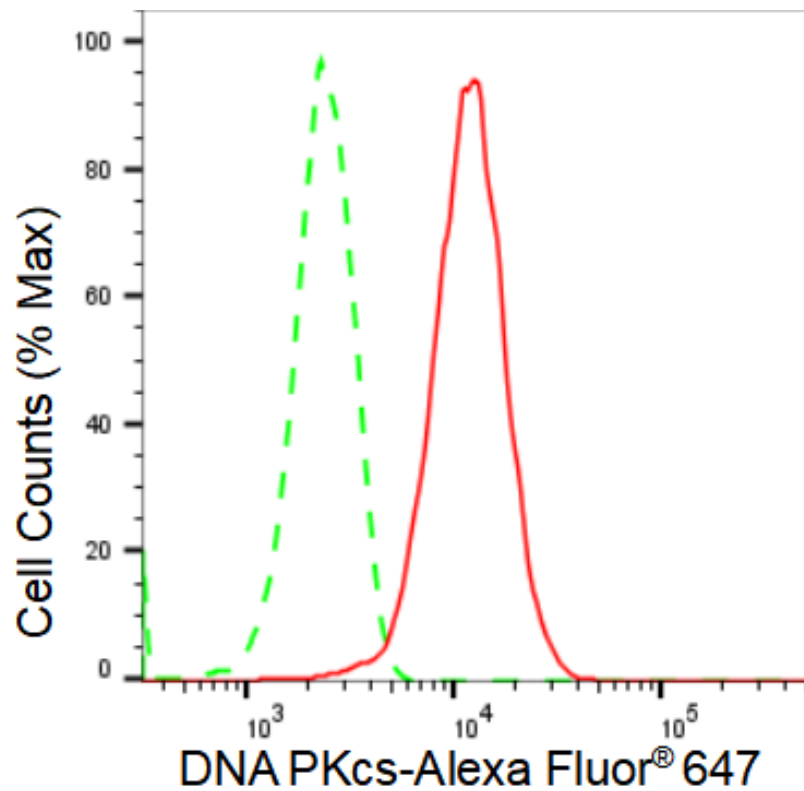
Store at -20 °C for one year.

#### Recommended Dilutions

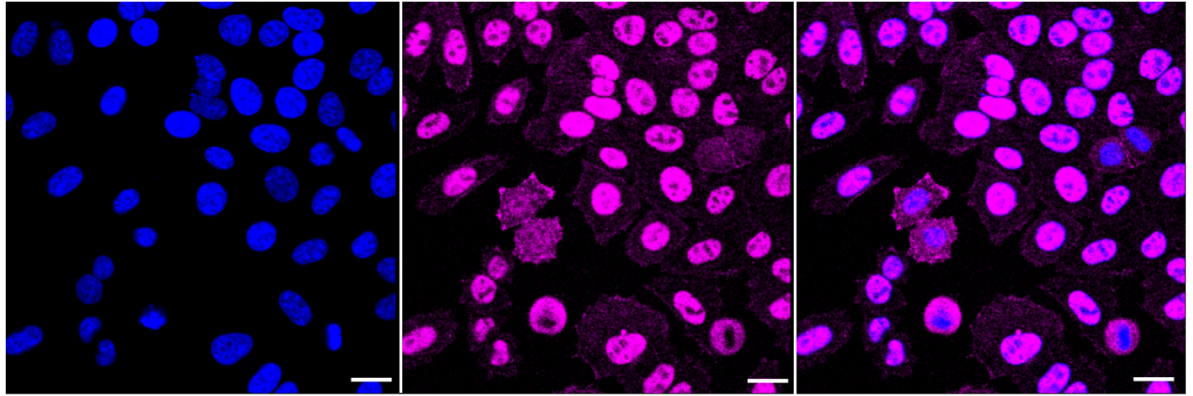
Western Blotting (WB): 1:1,000-1:5,000 Flow Cytometry (FCM): 1:2,000  
Immunocytochemistry (IC): 1:1,000

#### Protocols

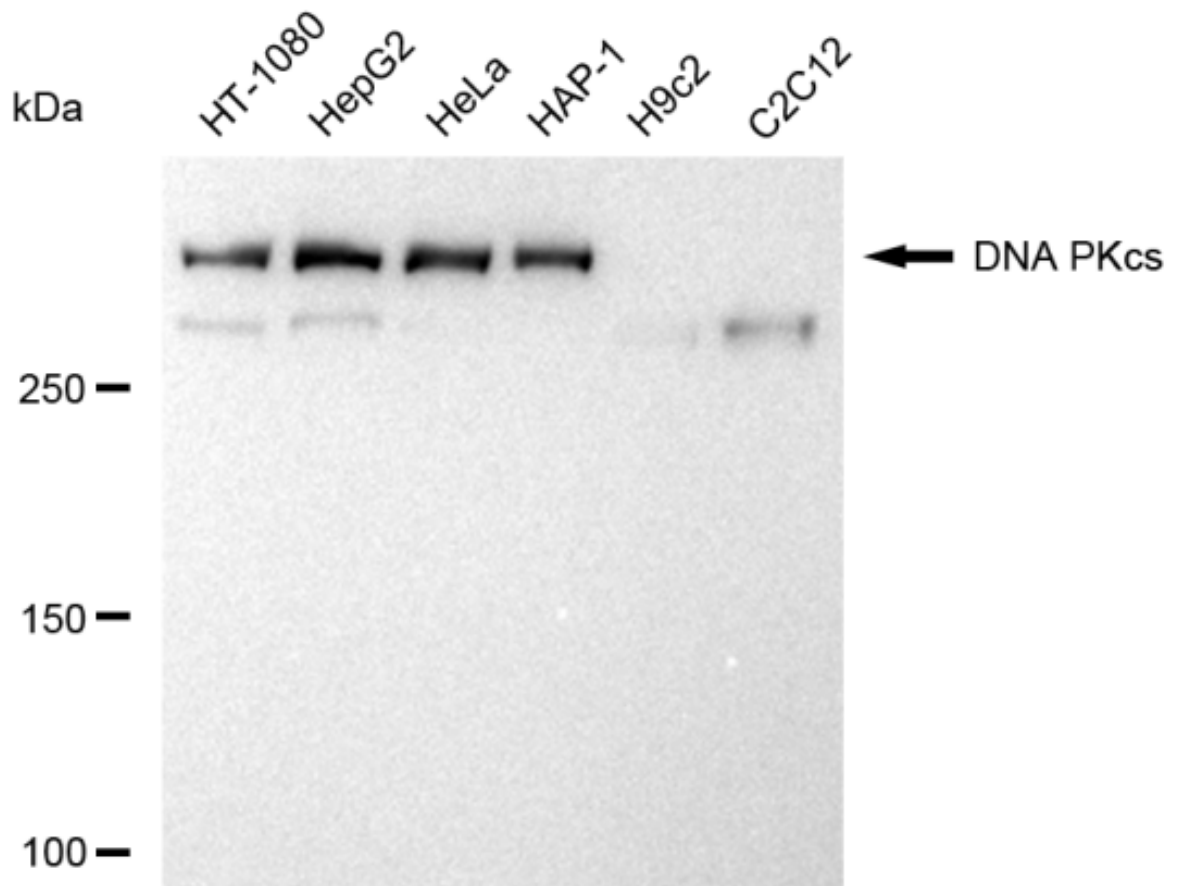
For general and specific antibody protocols please visit our website. Read all instructions before using this product.



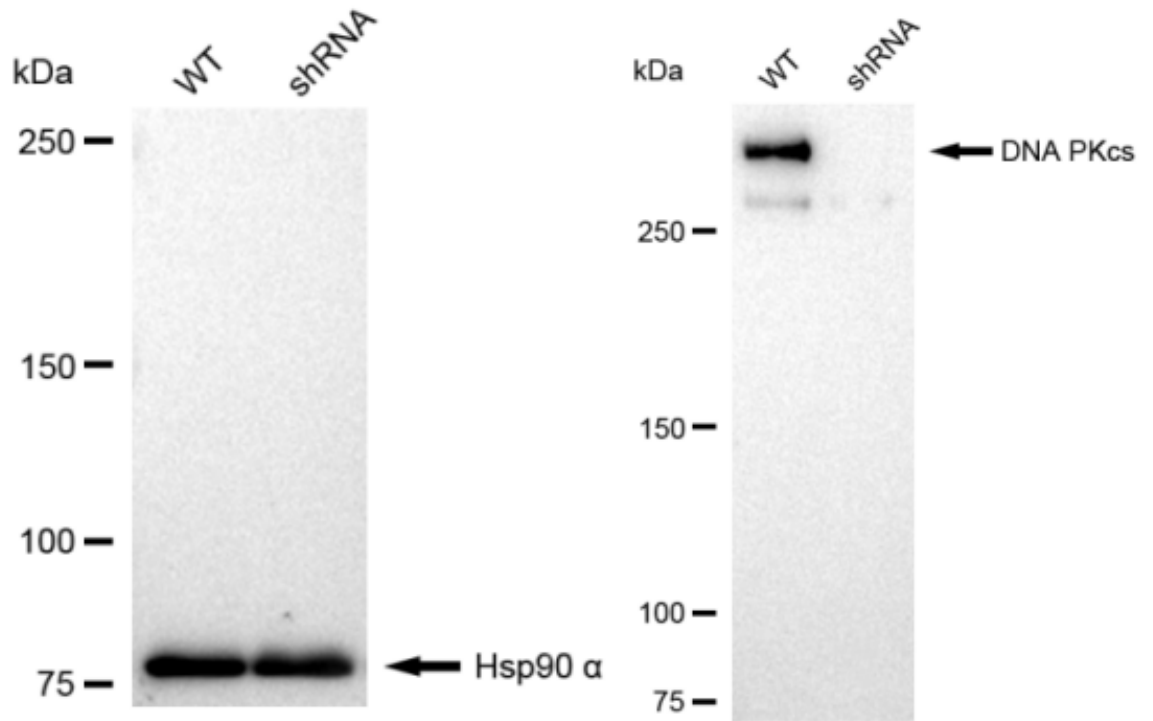
Flow cytometric analysis of DNA PKcs expression in HepG2 cells using DNA PKcs antibody 1:2,000. Green, isotype control; red, DNA PKcs.



Immunocytochemical staining of HepG2 cells with DNA PKcs antibody 1:1,000. Nuclei were stained blue with DAPI; DNA PKcs was stained magenta with Alexa Fluor® 647. Images were taken using Leica stellaris 5. Protein abundance based on laser Intensity and smart gain: Medium. Scale bar: 20  $\mu$ m.



Western blotting analysis using anti-DNA PKcs antibody 1:5,000 and HRP-conjugated goat anti-rabbit secondary antibody 1:20,000 respectively. Image was developed using FeQ™ ECL Substrate Kit .



Western blotting analysis using anti-DNA PKcs antibody 1:5,000 and HRP-conjugated goat anti-rabbit secondary antibody 1:20,000 respectively. Image was developed using FeQ™ ECL Substrate Kit .